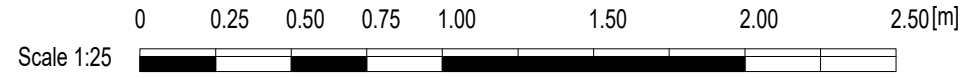


Timber single glazed sash and case windows.



NOTES

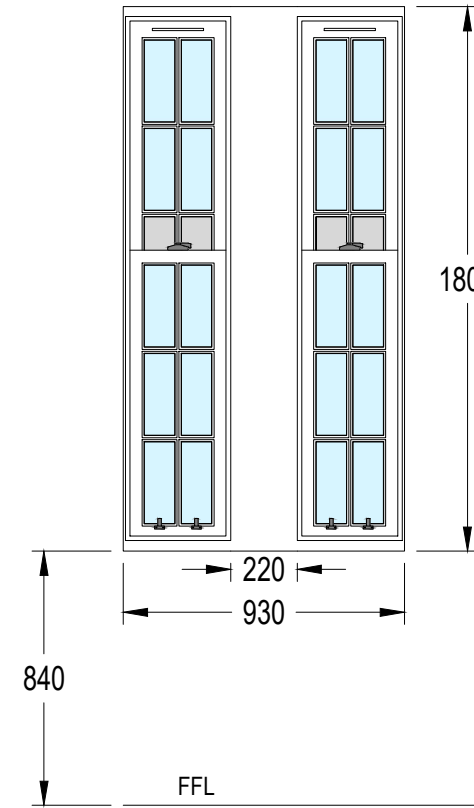
© copyright. All rights reserved, this drawing must not be copied or reproduced without the written consent of Summers-Inman Construction and Property Consultants LLP.

No dimensions are to be scaled from this drawing. All dimensions and sizes are in millimetres unless otherwise stated and should be checked on site.

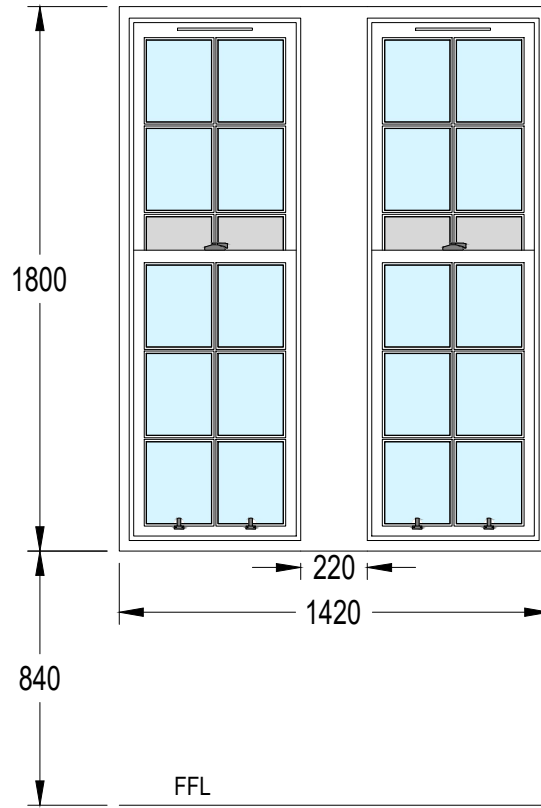
No part of this publication may be produced, stored in any retrieval system or transmitted in any form or by any means without prior permission of summers-inman construction and property consultants.

This drawing is to be read in conjunction with Summers-Inman Construction and Property Consultants' specification, structural engineer's and services consultant's specification where applicable.

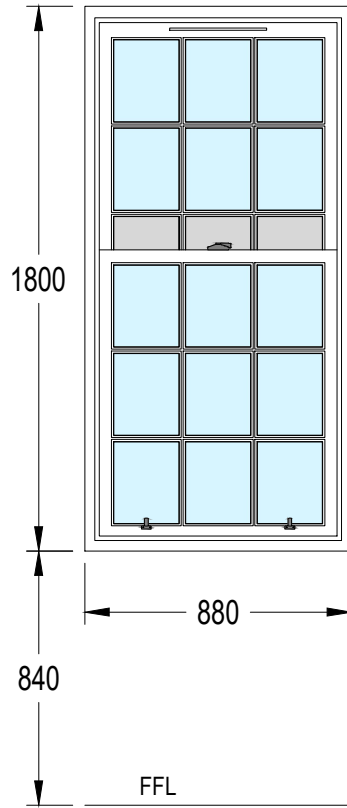
W1, W2 - Utility room window - Internal View



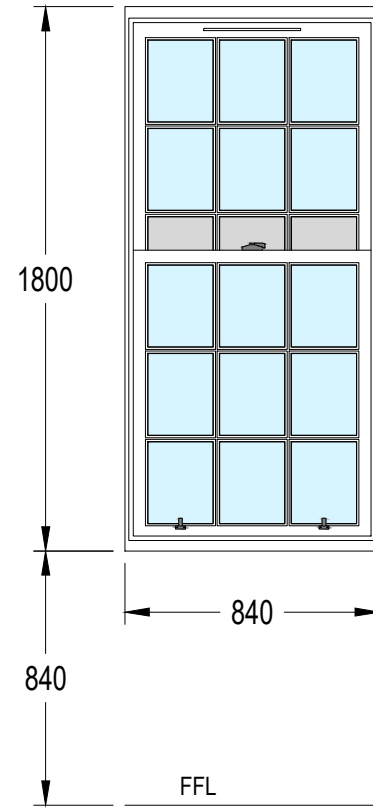
W3, W4 - Dining room window - Internal View



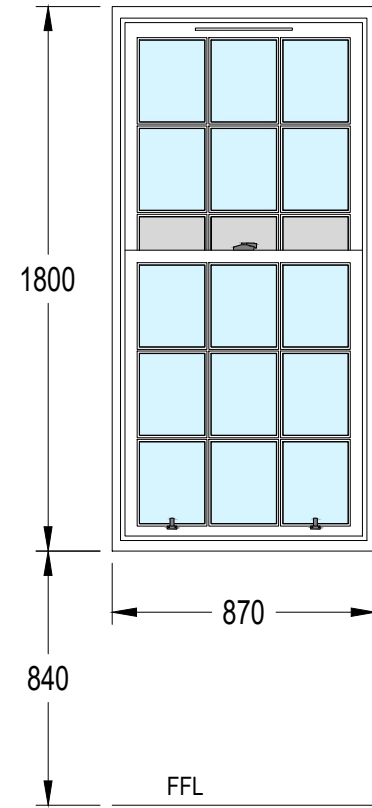
W5 - Kitchen window - Internal View



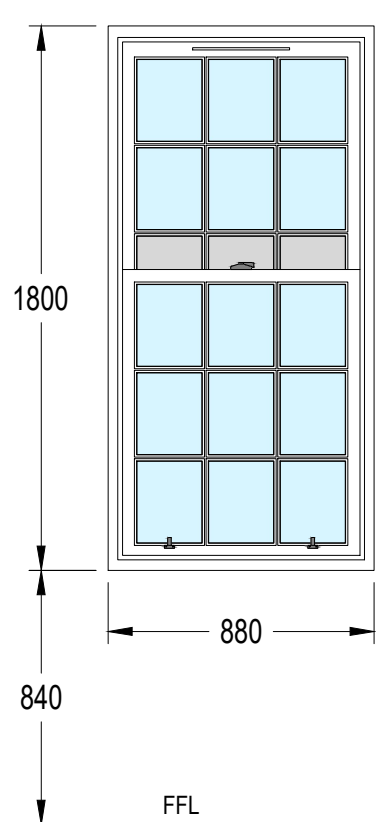
W6 - Toilet window - Internal View



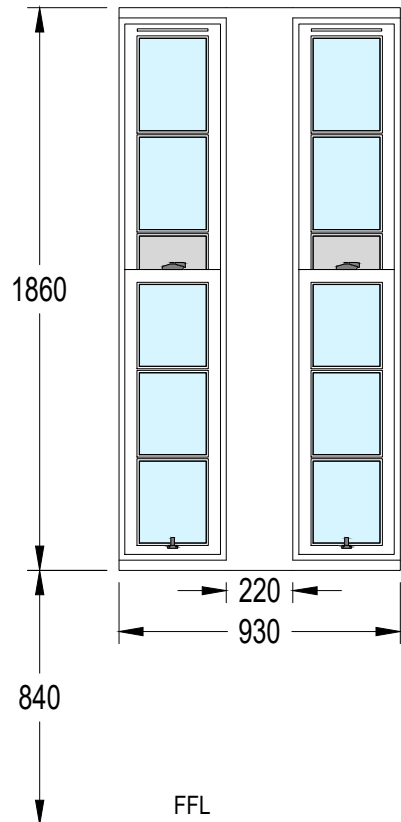
W7 - Bedroom 1 window - Internal View



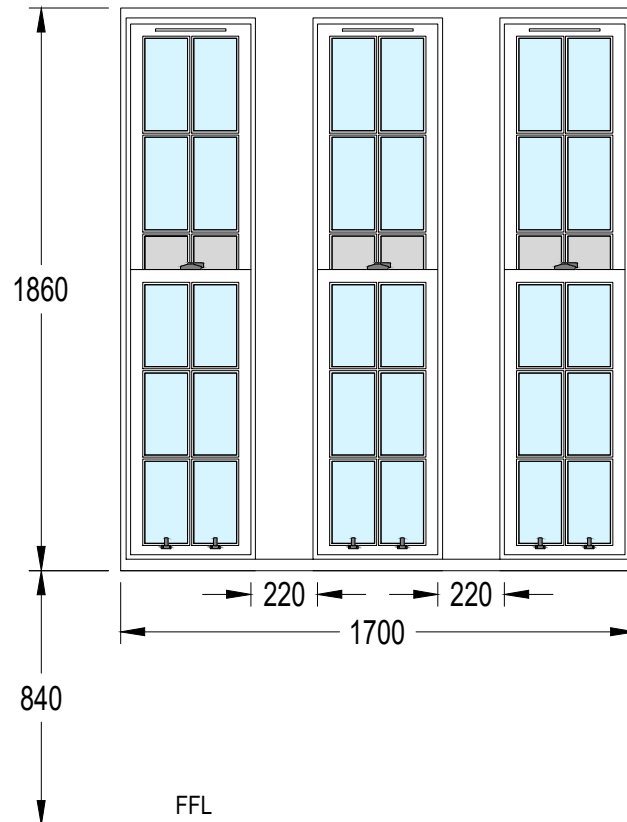
W8 - Bedroom 2 window - Internal View



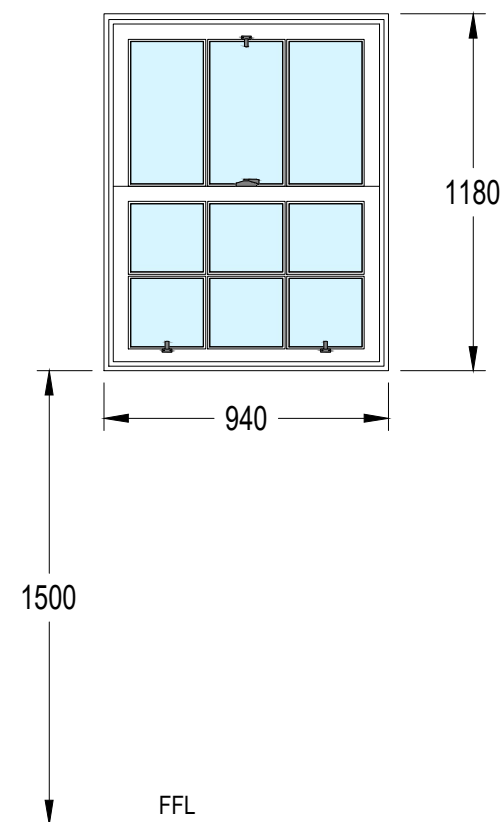
W9, W10 & W11, W12 & W13, W14 - Living room windows - Internal View



W15, W16, W17- Living room windows - Internal View



W18 & W19- Hallway windows - Internal View



Rev.	Description	Issue by	Date



Suite 4, Pavilion 1, The Quadrant,
14 New Mart Road, Edinburgh, EH14 1RL
0131 455 9700
edinburgh@summers-inman.co.uk
www.summers-inman.co.uk

Drawing Status

Statutory Consent

Client
The City of Edinburgh Council
Project
Windows Refurbishment, 41 1F Haddington Place, Edinburgh
Title
Existing Windows (Internal View)

Date NOV 23 Scale at A3 1:25 Drawn MJ Checked MP

EH22040 - SUM - XX - XX - DR - B - 0104 -							
Project	Originator	Zone	Level	Type	Role	Number	Rev.