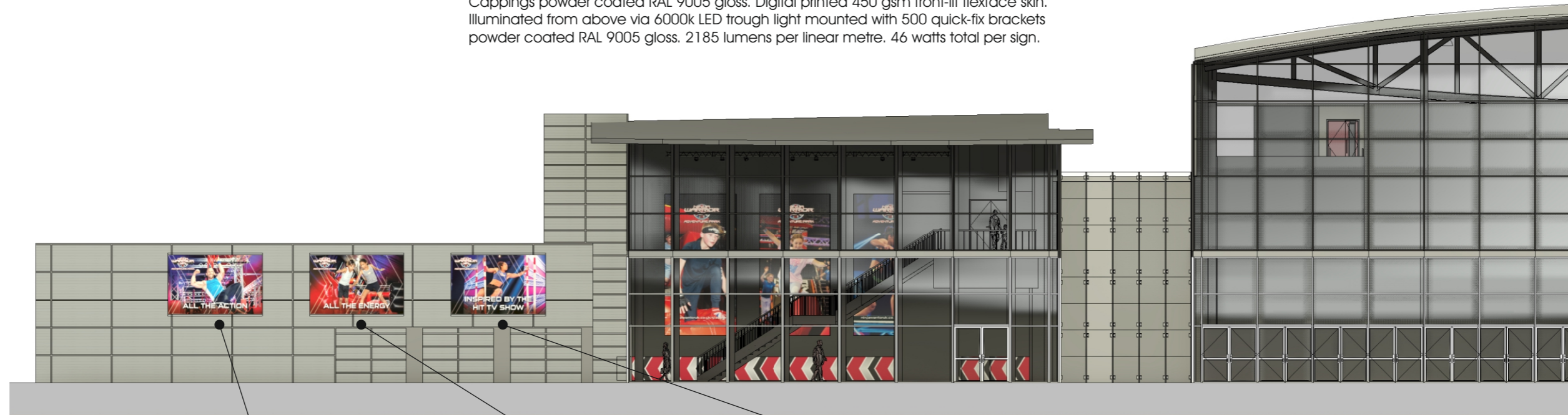


# BRAEHEAD QUAY ELEVATION

3 No. Retro frame flexface signs 4000x2500x89mm fixed with aluminium angle to cladding. Cappings powder coated RAL 9005 gloss. Digital printed 450 gsm front-lit flexface skin. Illuminated from above via 6000k LED trough light mounted with 500 quick-fix brackets powder coated RAL 9005 gloss. 2185 lumens per linear metre. 46 watts total per sign.



ENLARGED DETAIL 1:50



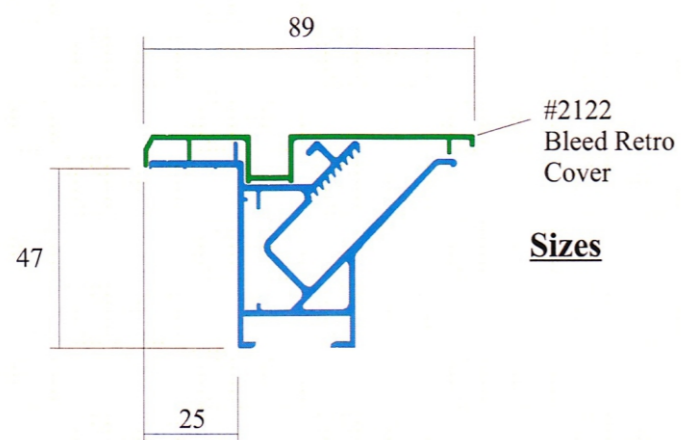
FILE EXT.	\\A-Z Projects\Ninja Warrior\Sites\Glasgow Braehead\Drawings\01_NINJA WARRIOR_GLASGOW BRAEHEAD_REV 00	DWG No.	01_NINJA WARRIOR_GLASGOW BRAEHEAD_REV 00
CLIENT	NINJA WARRIOR	DATE	21-11-23
ADDRESS	GLASGOW BRAEHEAD	JOB No.	-
DRAWN BY	D.F.	APPROVED	N.A.

REVISIONS:	REV_00
This drawing is confidential and any form of reproduction, modification, distribution or other unauthorised use is strictly prohibited without written consent	

SCALE	1:200 @ A3
0 1 2 3 4 5 metres	

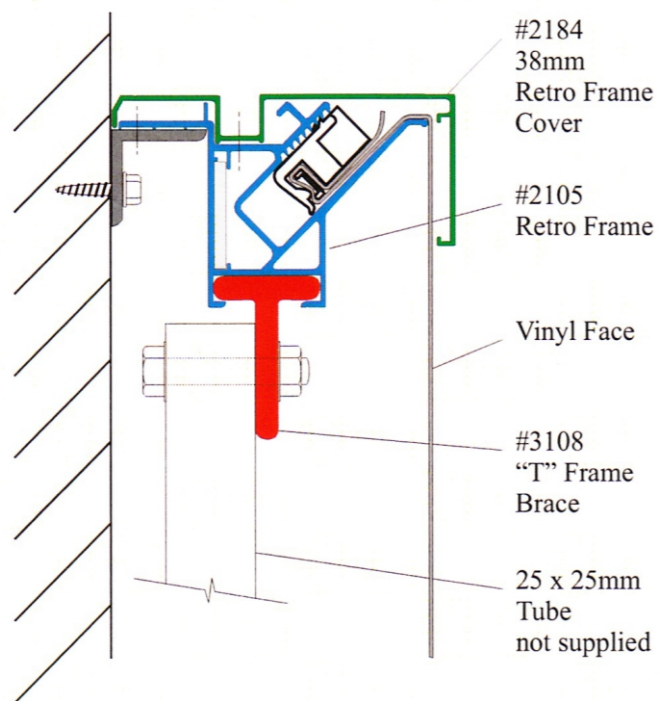
Greens 'the signmakers'  
 Brighton Street, Kingston upon Hull  
 East Yorkshire HU3 4UW  
 Tel: 01482 327371 Fax: 01482 228050  
 email: info@greens-signmakers.co.uk  
 web: www.greens-signmakers.co.uk

# BRAEHEAD QUAY SIGNAGE



**Sizes**

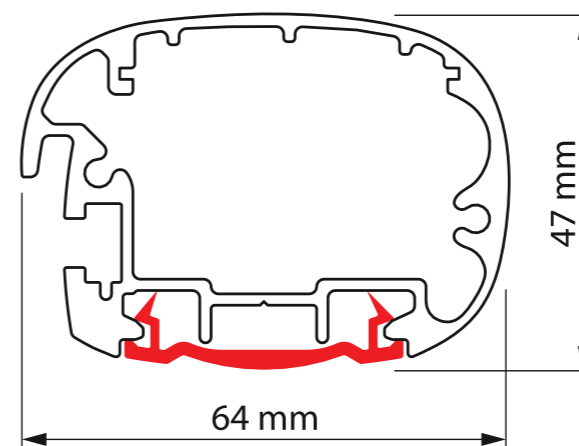
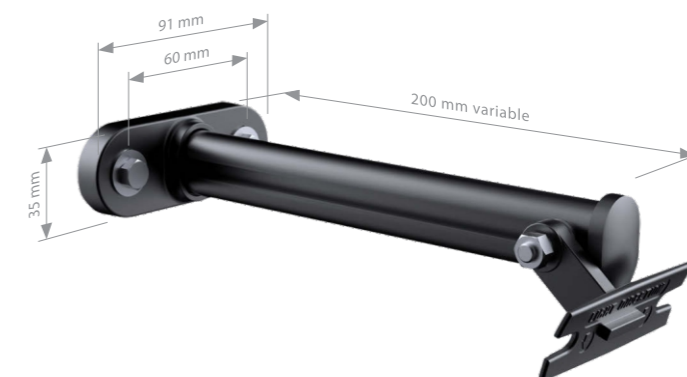
**Assembly using #3108  
"T" Frame Brace**



**Quick-Fix Bracket**

Standard Bracket

- 200 mm Quick-Fix brackets included with the purchase of Nanolight. Other sizes and styles are available at an additional cost.
- 4-way adjustability to reach the preferred angle for optimum light spread.
- Strong yet unobtrusive, perfectly coordinated with Nanolight.
- T-shaped bracket to hang and hold Nanolight in place whilst fastening.



RETRO FRAME FLEXFACE 1:2

NANOLIGHT LED TROUGH LIGHT 1:1



FILE EXT.	\\A-Z Projects\Ninja Warrior\Sites\Glasgow Braehead\Drawings\01_NINJA WARRIOR_GLASGOW BRAEHEAD_REV 00	DWG No.	01_NINJA WARRIOR_GLASGOW BRAEHEAD_REV 00
CLIENT	NINJA WARRIOR	DATE	21-11-23
ADDRESS	GLASGOW BRAEHEAD	JOB No.	-
DRAWN BY	D.F.	APPROVED	N.A.

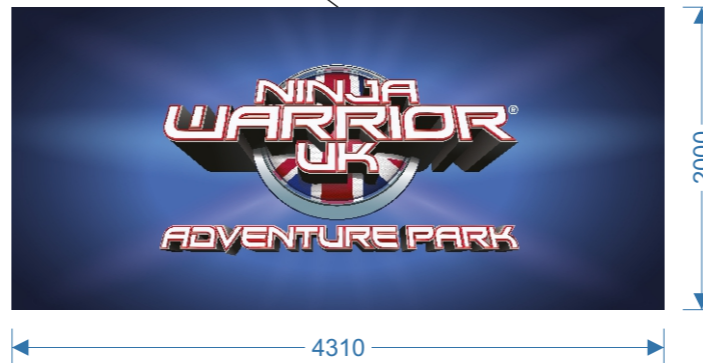
REVISIONS:	REV_00
This drawing is confidential and any form of reproduction, modification, distribution or other unauthorised use is strictly prohibited without written consent	

SCALE	AS SHOWN @ A3
-------	---------------

Greens 'the signmakers'  
 Brighton Street, Kingston upon Hull  
 East Yorkshire HU3 4UW  
 Tel: 01482 327371 Fax: 01482 228050  
 email: info@greens-signmakers.co.uk  
 web: www.greens-signmakers.co.uk



1 No. standrad Econoflex box 4310x2000x196mm with 2mm aluminium backing sheet, box powder coated RAL 9005 gloss entirely. Digital printed 500 gsm back-lit flex face skin. Illuminated internally via 6500k Prism24 LEDs, 1566 lumens per sqm, 108 watts total. Box fitted to curtain wall with 4 No. 50x25x3mm aluminium box section cross rails powder coated RAL 9005 gloss.



ENLARGED DETAIL 1:50



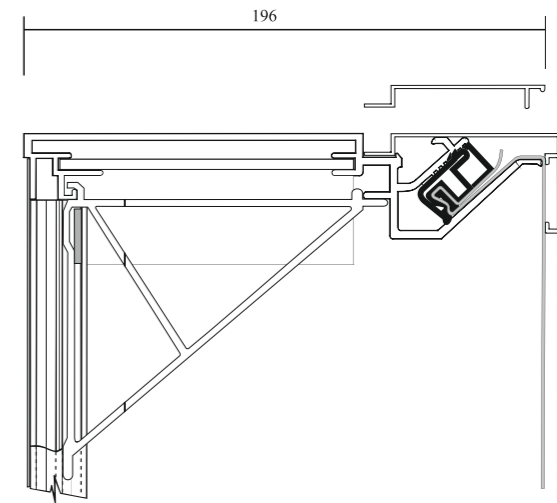
FILE EXT.	\\A-Z Projects\Ninja Warrior\Sites\Glasgow Braehead\Drawings\01_NINJA WARRIOR_GLASGOW BRAEHEAD_REV 00	DWG No.	01_NINJA WARRIOR_GLASGOW BRAEHEAD_REV 00
CLIENT	NINJA WARRIOR	DATE	21-11-23
ADDRESS	GLASGOW BRAEHEAD	JOB No.	-
DRAWN BY	D.F.	APPROVED	N.A.

REVISIONS:	REV_00
This drawing is confidential and any form of reproduction, modification, distribution or other unauthorised use is strictly prohibited without written consent	

SCALE 1:200 @ A3

metres

Greens 'the signmakers'  
 Brighton Street, Kingston upon Hull  
 East Yorkshire HU3 4UW  
 Tel: 01482 327371 Fax: 01482 228050  
 email: info@greens-signmakers.co.uk  
 web: www.greens-signmakers.co.uk



Econoflex box cross-section

**NINJA WARRIOR UK LOGO**

Econoflex box powder coated RAL 9005 with digital printed skin and internal LED illumination.

4310mm x 2000mm x 196mm

Prism 24 HO LEDs spaced @ 300mm centres fitted straight to the back of the box.



FILE EXT.	\\A-Z Projects\Ninja Warrior\Sites\Glasgow Braehead\Drawings\01_NINJA WARRIOR_GLASGOW BRAEHEAD_REV 00	DWG No.	01_NINJA WARRIOR_GLASGOW BRAEHEAD_REV 00
CLIENT	NINJA WARRIOR	DATE	21-11-23
ADDRESS	GLASGOW BRAEHEAD	JOB No.	-
DRAWN BY	D.F.	APPROVED	N.A.

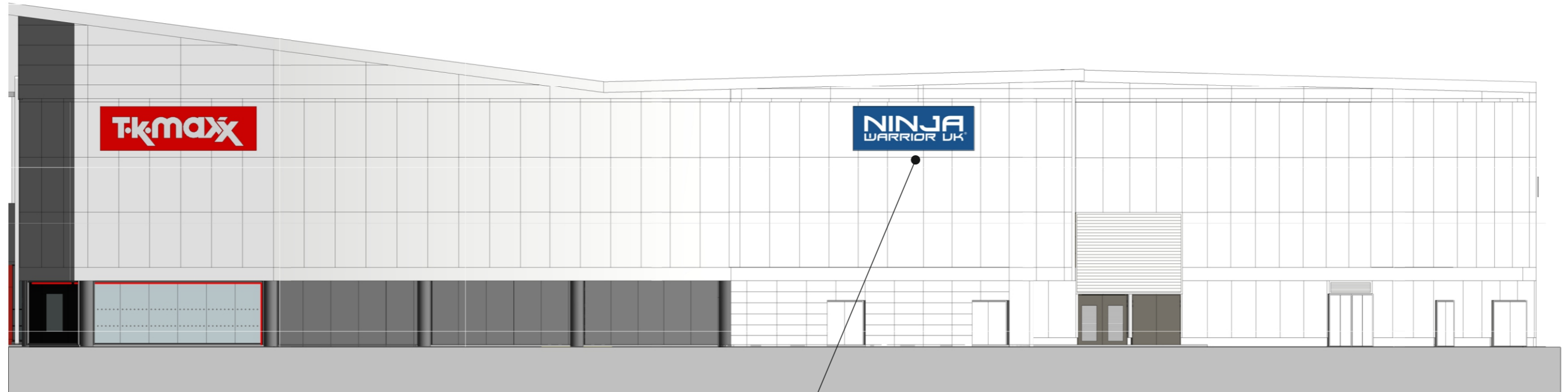
REVISIONS:	REV_00
This drawing is confidential and any form of reproduction, modification, distribution or other unauthorised use is strictly prohibited without written consent	

SCALE	1:20 @ A3
0 500	
mm	

Greens 'the signmakers'  
 Brighton Street, Kingston upon Hull  
 East Yorkshire HU3 4UW  
 Tel: 01482 327371 Fax: 01482 228050  
 email: info@greens-signmakers.co.uk  
 web: www.greens-signmakers.co.uk

# MARLINFORD ROAD ELEVATION

1 No. folded 3mm aluminium fascia 5470x1995x50mm powder coated RAL 5017 gloss with 80mm built up Perspex letters mounted to the face. Letters constructed from 5mm 050 opal acrylic faces with 5mm 9t30 black Perspex returns & 10mm foamex back trays with Prism24 LEDs to illuminate letter faces only. 24,000 lumens total, 192 watts total.



ENLARGED DETAIL 1:50



FILE EXT.	\\A-Z Projects\Ninja Warrior\Sites\Glasgow Braehead\Drawings\01_NINJA WARRIOR_GLASGOW BRAEHEAD_REV 00	DWG No.	01_NINJA WARRIOR_GLASGOW BRAEHEAD_REV 00
CLIENT	NINJA WARRIOR	DATE	21-11-23
ADDRESS	GLASGOW BRAEHEAD	JOB No.	-
DRAWN BY	D.F.	APPROVED	N.A.

REVISIONS:	REV_00
This drawing is confidential and any form of reproduction, modification, distribution or other unauthorised use is strictly prohibited without written consent	

SCALE	1:200 @ A3
0 1 2 3 4 5 metres	

Greens 'the signmakers'  
 Brighton Street, Kingston upon Hull  
 East Yorkshire HU3 4UW  
 Tel: 01482 327371 Fax: 01482 228050  
 email: info@greens-signmakers.co.uk  
 web: www.greens-signmakers.co.uk

Folded aluminium tray with 50mm returns powder coated RAL 5017

Built-up opal acrylic letters with 80mm black returns. letters to have 10mm foam backtrays to hold LEDs.



**3D ILLUMINATED SIGN**

Folded 3mm aluminium tray 5470mm x 1995mm with 50mm returns powder coated RAL 5017 with built-up opal acrylic lettering internally illuminated fixed to the face. Letter faces to be opal w/ black letter returns.

Ninja lettering 740 mm height with 80mm returns. Warrior UK lettering 348 mm high with 80 mm returns. Registered trademark to be applied plotter cut white vinyl to the face of panel.

Size: 5400 x 1930 x 50 mm returns, folded 3mm aluminium tray in 4 sections 1367.5mm wide by 1995mm deep. 10mm foam backtrays for LEDs.



FILE EXT.	\\A-Z Projects\Ninja Warrior\Sites\Glasgow Braehead\Drawings\01_NINJA WARRIOR_GLASGOW BRAEHEAD_REV 00	DWG No.	01_NINJA WARRIOR_GLASGOW BRAEHEAD_REV 00
CLIENT	NINJA WARRIOR	DATE	21-11-23
ADDRESS	GLASGOW BRAEHEAD	JOB No.	-
DRAWN BY	D.F.	APPROVED	N.A.

REVISIONS:	REV_00
This drawing is confidential and any form of reproduction, modification, distribution or other unauthorised use is strictly prohibited without written consent	

SCALE	1:20 @ A3
0 500	
mm	

Greens 'the signmakers'  
 Brighton Street, Kingston upon Hull  
 East Yorkshire HU3 4UW  
 Tel: 01482 327371 Fax: 01482 228050  
 email: info@greens-signmakers.co.uk  
 web: www.greens-signmakers.co.uk