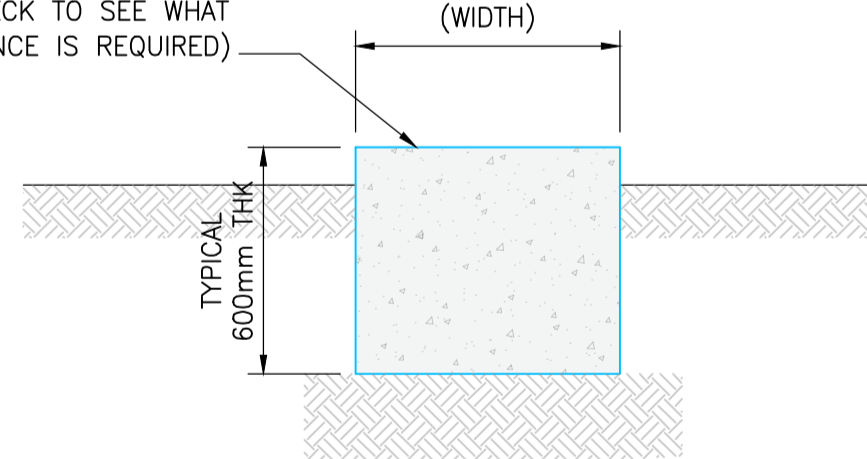


SITE COMPOUND GENERAL ARRANGEMENT
SCALE 1:250

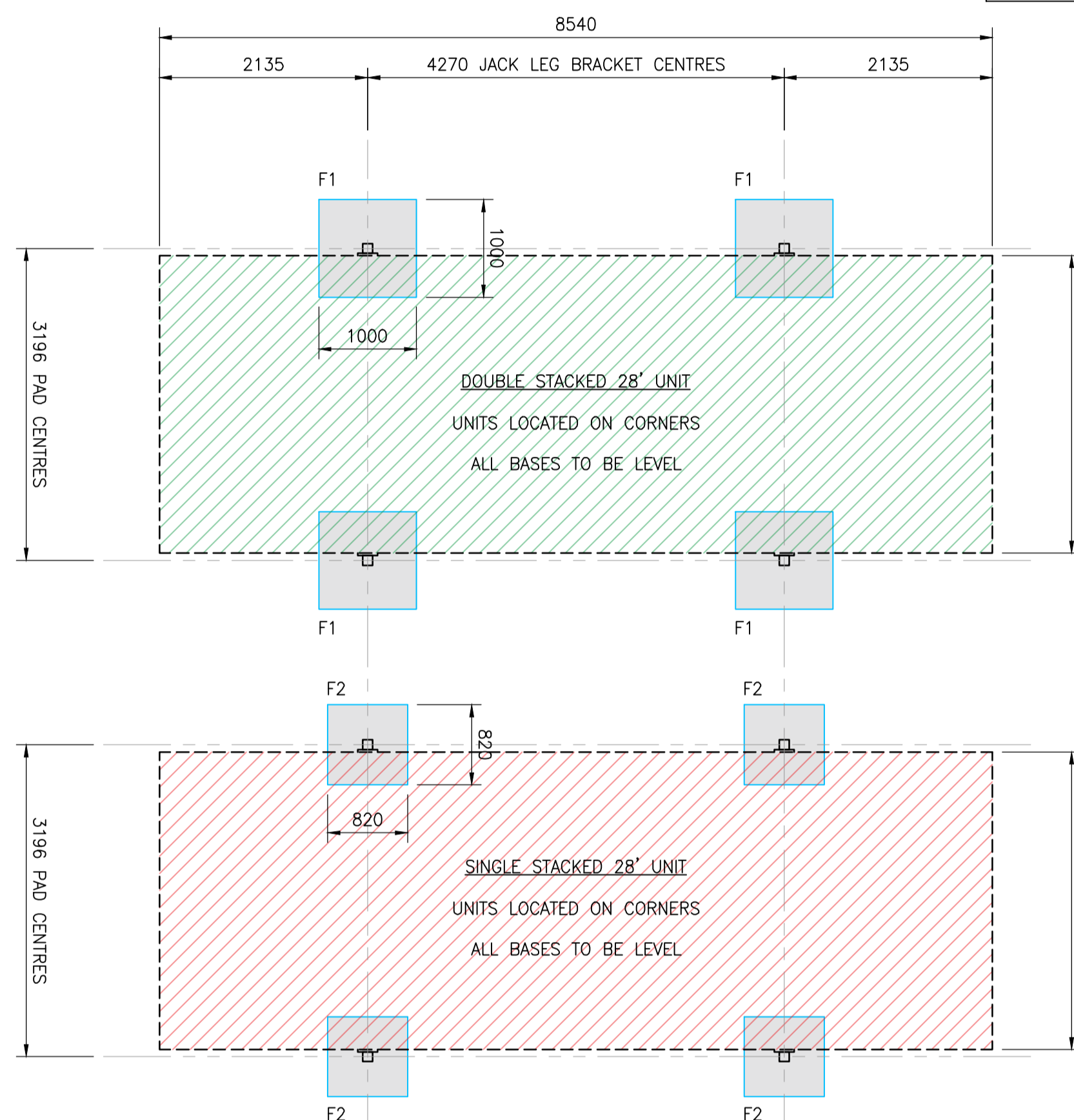
PROPOSED LEVEL TO BASE OF JACK LEG OF CABIN (PLEASE CHECK TO SEE WHAT TOLERANCE IS REQUIRED)



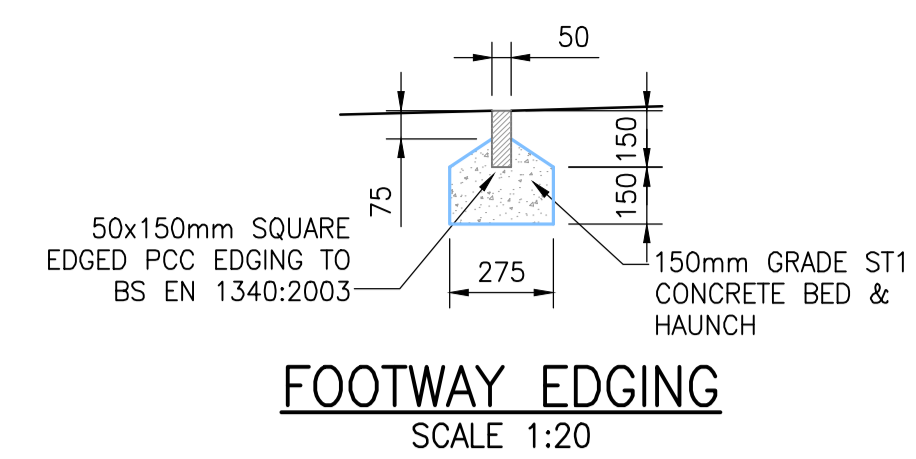
F1 & F2 TYPICAL SECTION
SCALE 1:20

KEY TO CONCRETE BASE FOUNDATION (F)				
	SIZE	TCL	BFL	DEPTH
F1	1000 X 1000	-	-	600mm
F2	820 X 820	-	-	600mm

CONCRETE = C28/35

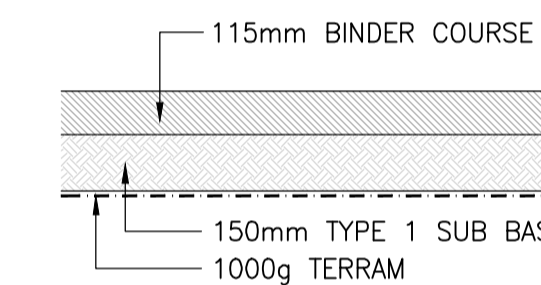
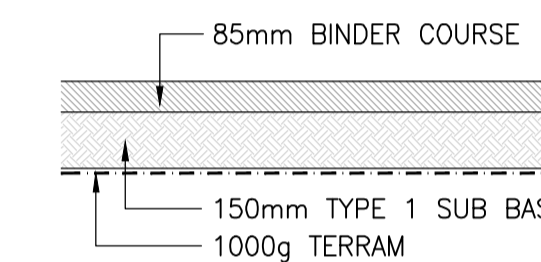
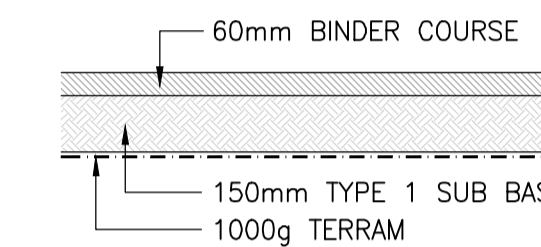


FOUNDATION GENERAL ARRANGEMENT
SCALE 1:50



KERB NOTES:

- NO KERB SHALL BE LAID MORE THAN 3mm OUT OF LINE OR LEVEL. IF THIS TOLERANCE IS EXCEEDED THE KERB SHALL BE TAKEN UP AND RE-LAID.
- CIRCULAR KERBS OF LESS THAN 12m RADIUS TO BE PRECAST CIRCULAR UNITS. BENDS OF RADIUS GREATER THAN 12m TO BE MADE UP OF SHORT STRAIGHT LENGTHS. ALL KERBS LAID TO 3mm TOLERANCE AS PER NOTE 1 WITH SAME TOLERANCES.



*WHERE TANKERS/LORRIES TURNING INSIDE OF COMPOUND

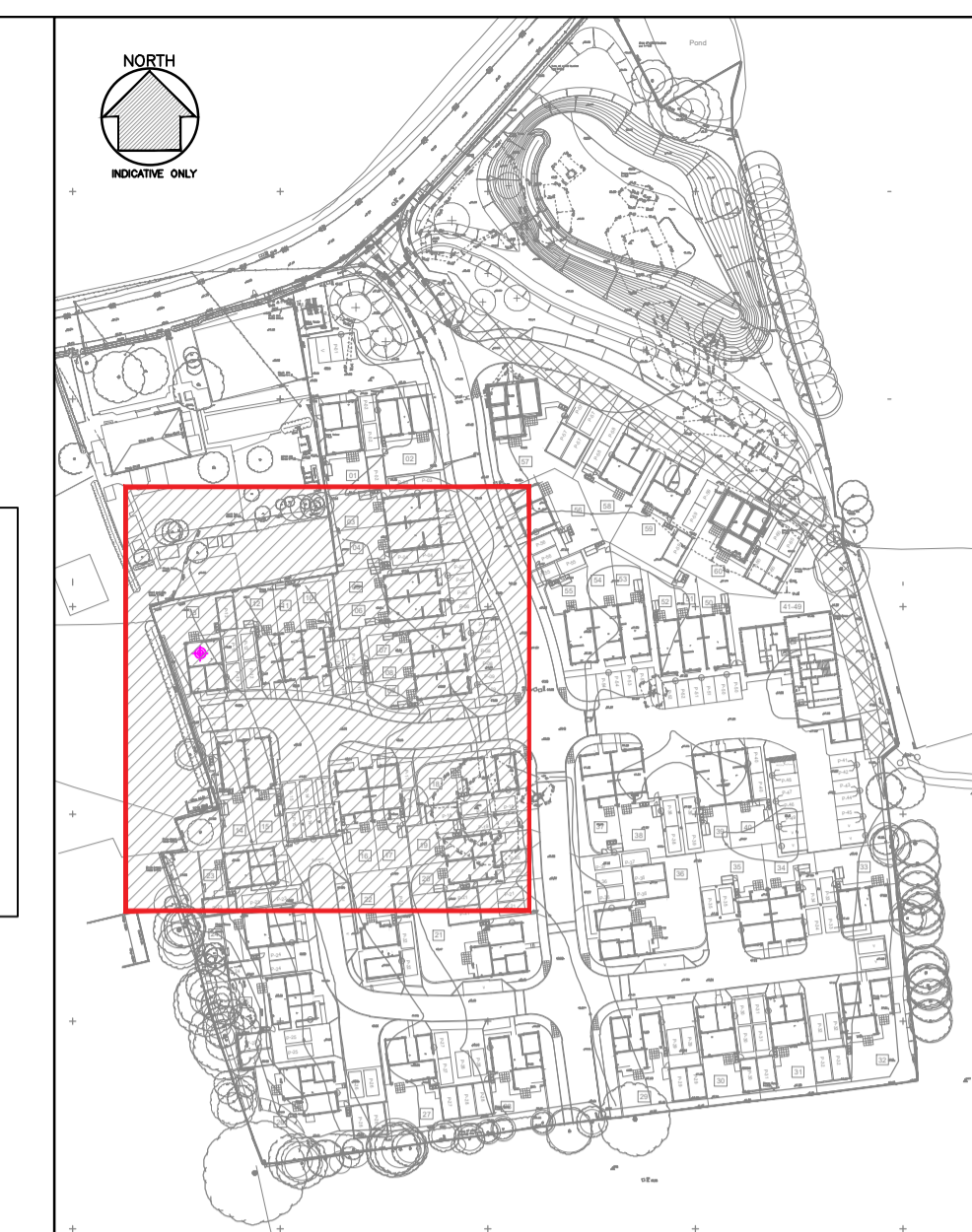
NOTES:

BINDER COURSE (BASE COURSE)

- AC20 ASPHALT CONCRETE TO BS EN 13108-1 & PD 6691 UTILISING AGGREGATE TO BS EN 13043 & PD 6682-2.
- 150mm TYPE1 SUB BASE (SOILS HAVE BEEN ENGINEERED)
- 1000g TERRAM

NOTES:

- FORMATION IS TO BE RAISED TO THE PROPOSED LEVELS AND TO BE PROOF ROLLED WITH A HEAVY WEIGHT VIBRATORY COMPACTOR [AS USED ON THE ENABLING WORKS].
- ALL SOFT AREAS TO BE EXCAVATED AND INFILLED AND RE-ROLLED.
- THE ENGINEERED SOILS SHOULD PROVIDE A CBR OF IN EXCESS OF 5%.
- THE USE OF THE GEOMEMBRANE IS TO AVOID LOSS OF FINES FROM THE TYPE 1 INTO THE ENGINEERED SOILS WHICH HAS IN PLACES AN INCREASED VOIDS RATIO.
- SURROUND TO THE COMPOUND AND TO CONTAIN THE BITUMINOUS MATERIALS.



DO NOT SCALE HARD COPIES OF THIS DRAWING OR INTERPOLATE GRID VERSIONS. ONLY STATED DIMENSIONS AND COORDINATES ARE TO BE RELIED UPON.

COPYRIGHT RESERVED

GENERAL NOTES

1. THIS DRAWING IS TO BE READ IN CONJUNCTION WITH THE ARCHITECTS, SPECIALISTS AND ENGINEERS DRAWINGS AND SPECIFICATIONS. ANY DISCREPANCIES ARE TO BE REPORTED TO THE ARCHITECT/ENGINEER IMMEDIATELY.

KEY:

- COMPOUND HOARDING
- WELFARE PERIMETER FENCE
- FENCE/HOARDING PANEL
- DEMOUNTABLE RAILING (900mm H)
- RETAINING WALL

REVISIONS

LATEST REVISIONS ARE 'TAGGED' WITH THIS INDICATOR. HOWEVER, ALL USERS OF THIS DRAWING MUST SATISFY THEMSELVES OF ALL REVISIONS TO ANY PREVIOUS ISSUES, BY COMPARISON OF THIS DRAWING AGAINST OTHER ISSUES, AS IT CANNOT BE GUARANTEED THAT EVERY ITEM OF REVISION HAS BEEN 'TAGGED'.

Rev	Date	Description	Drawn & Checked
G			
F	01.12.23	1:250 SCALE BAR ADDED	MMA NTU
E	28.11.23	1:20 SCALE BAR ADDED	MMA NTU
D	23.10.23	SITE COMPOUND RELOCATED	MMA NTU
C	01.08.23	GENERAL UPDATE	RPA NTU
B	31.07.23	CARPARK REVISED & NOTES UPDATED	RPA NTU
A	27.07.23	NOTES UPDATED	RPA NTU

HARRINGTONS NURSERY, SWANLEY

SITE COMPOUND GENERAL ARRANGEMENT, FOUNDATION & CONSTRUCTION DETAILS

BELLWAY HOMES (THAMES GATEWAY)

RLT ENGINEERING CONSULTANTS LTD. CIVIL AND STRUCTURAL CONSULTING ENGINEERS
2 ST PETER'S COURT MIDDLEBROUGH COLCHESTER, ESSEX, CO1 1WD
T: 01206 760655 E: info@rlt.co.uk

GMS ISO 9001 REGISTERED

