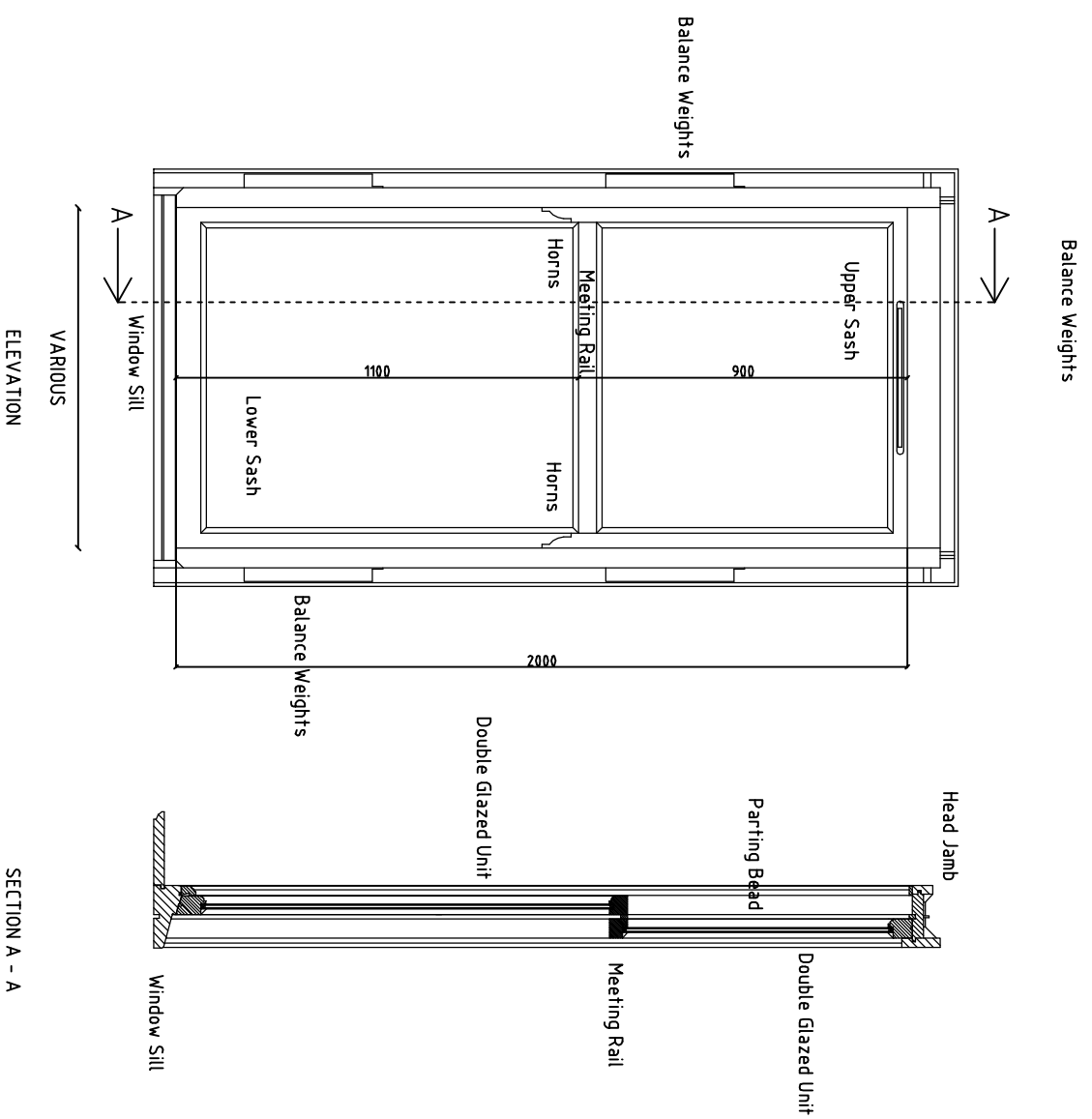
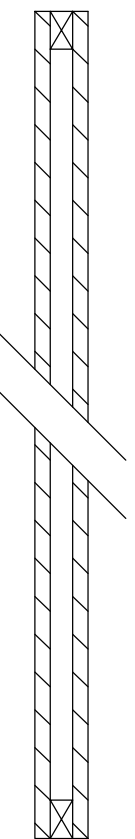


All window sizes for both heights and widths to be physically checked on site before manufacture.

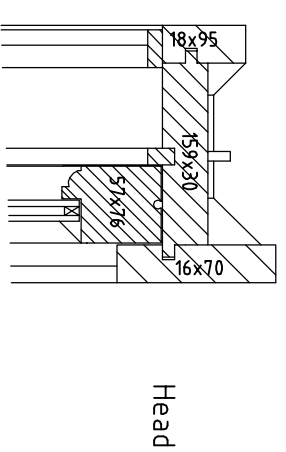


All windows to be a standard height of 2000mm with varying widths but will be designed as the elevations with 2No. Sashes Heights 900mm top sash and 1100mm bottom sash. The frames will have a minimum depth for rebate into the existing opening of 20mm each side and the gap will be sealed on all external surfaces of the sandstone and timber frame with linseed based sealer.

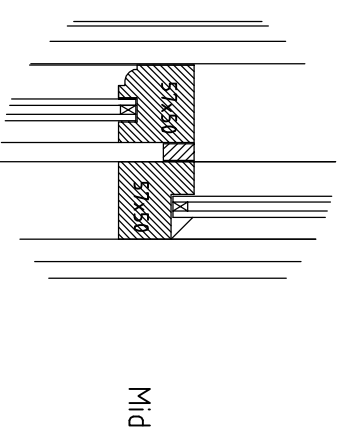
Double glazed unit consisting of 4mm Float Glass - 6mm Sealed Air Gap - 4mm Float Glass



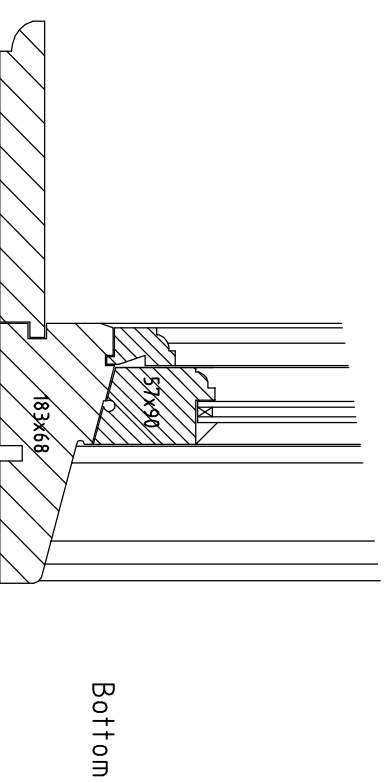
DOUBLE GLAZED UNIT



Head



Mid



Bottom

DETAILS

Listed Window Refurbishment Ltd
 Conservation Window Specialists
 Unit 14
 70 Strathclyde Street
 Glasgow G40 4JR
 Tel: 0141 550 1616 Fax: 0141 550 1515
 e-mail: sash-window@btconnect.com

Applicant			
Project			
Drawn by	CME	Scale	1:20 & 1:5
Title	Elevation, Section and Details		
Plan Number		Date	