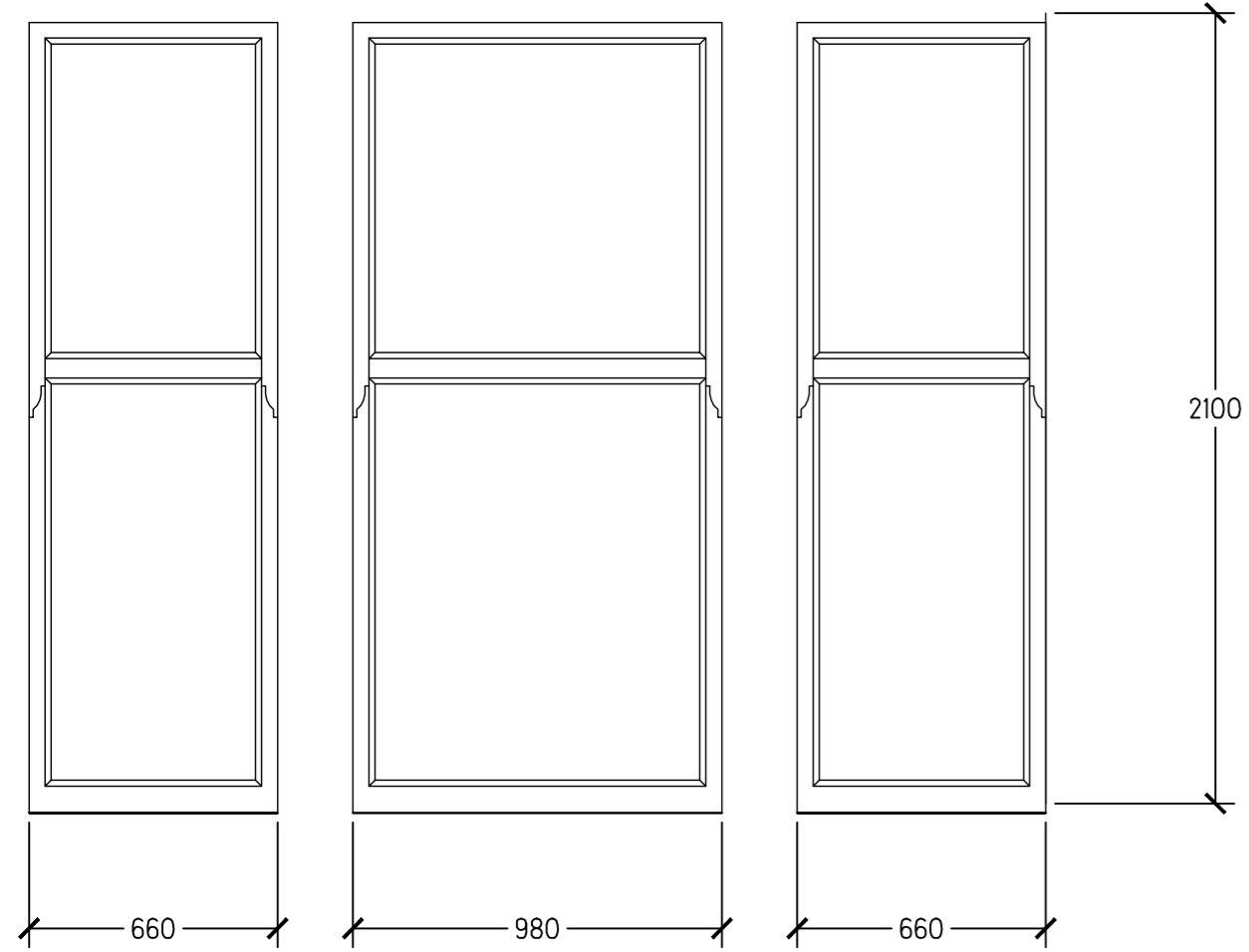
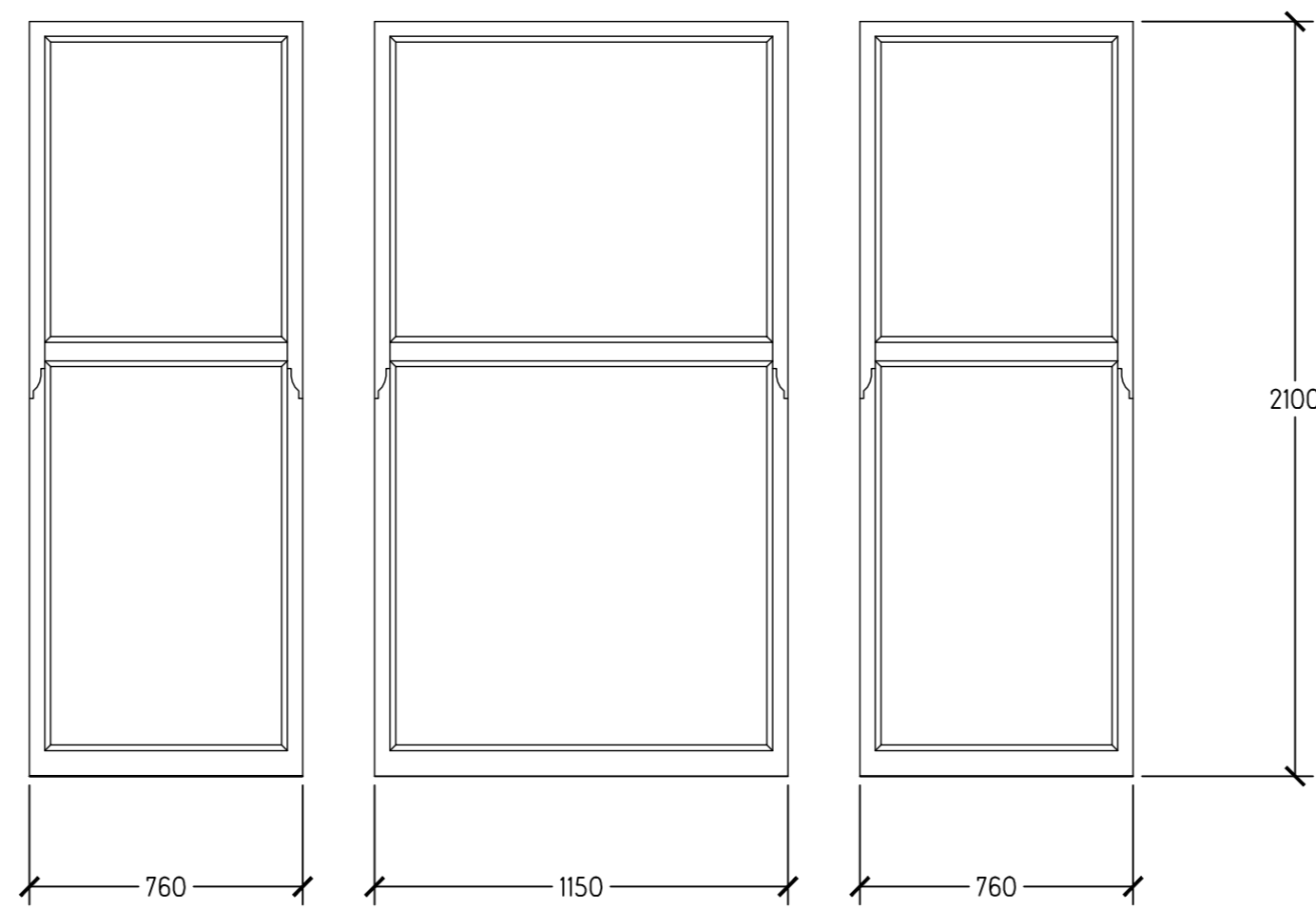


Bedroom Windows (as existing)



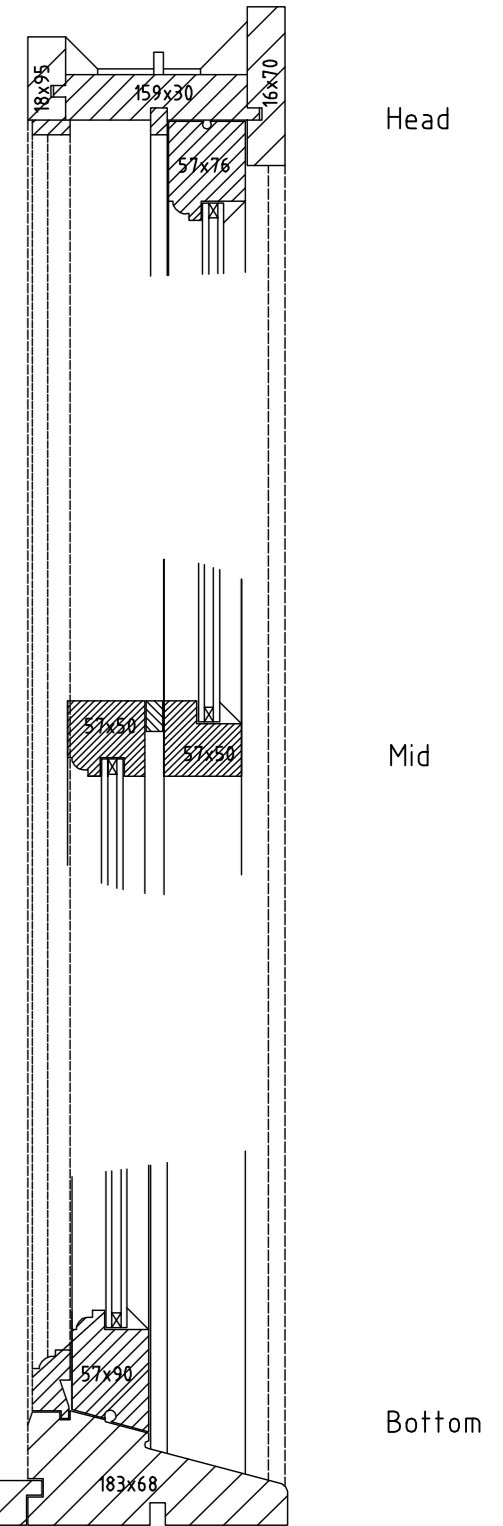
Living Room Windows (as existing)



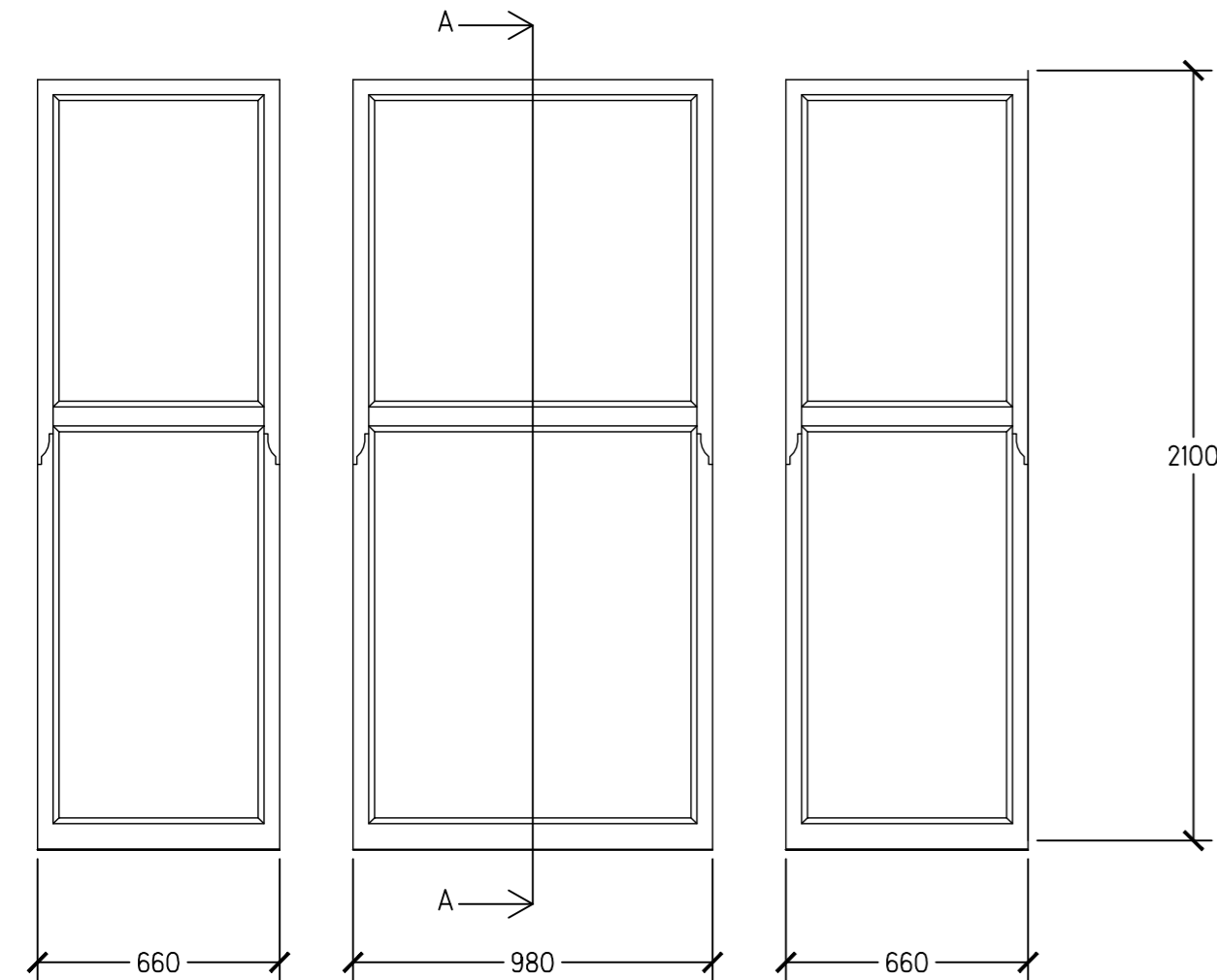
All window sizes for both heights and widths to be physically checked on site before manufacture.

All windows to be a standard height of 2100mm with varying widths but will be designed as the elevations with 2No. Sashes. The frames will have a minimum depth for rebate into the existing opening of 20mm each side and the gap will be sealed on all external surfaces of the sandstone and timber frame with linseed based sealer.

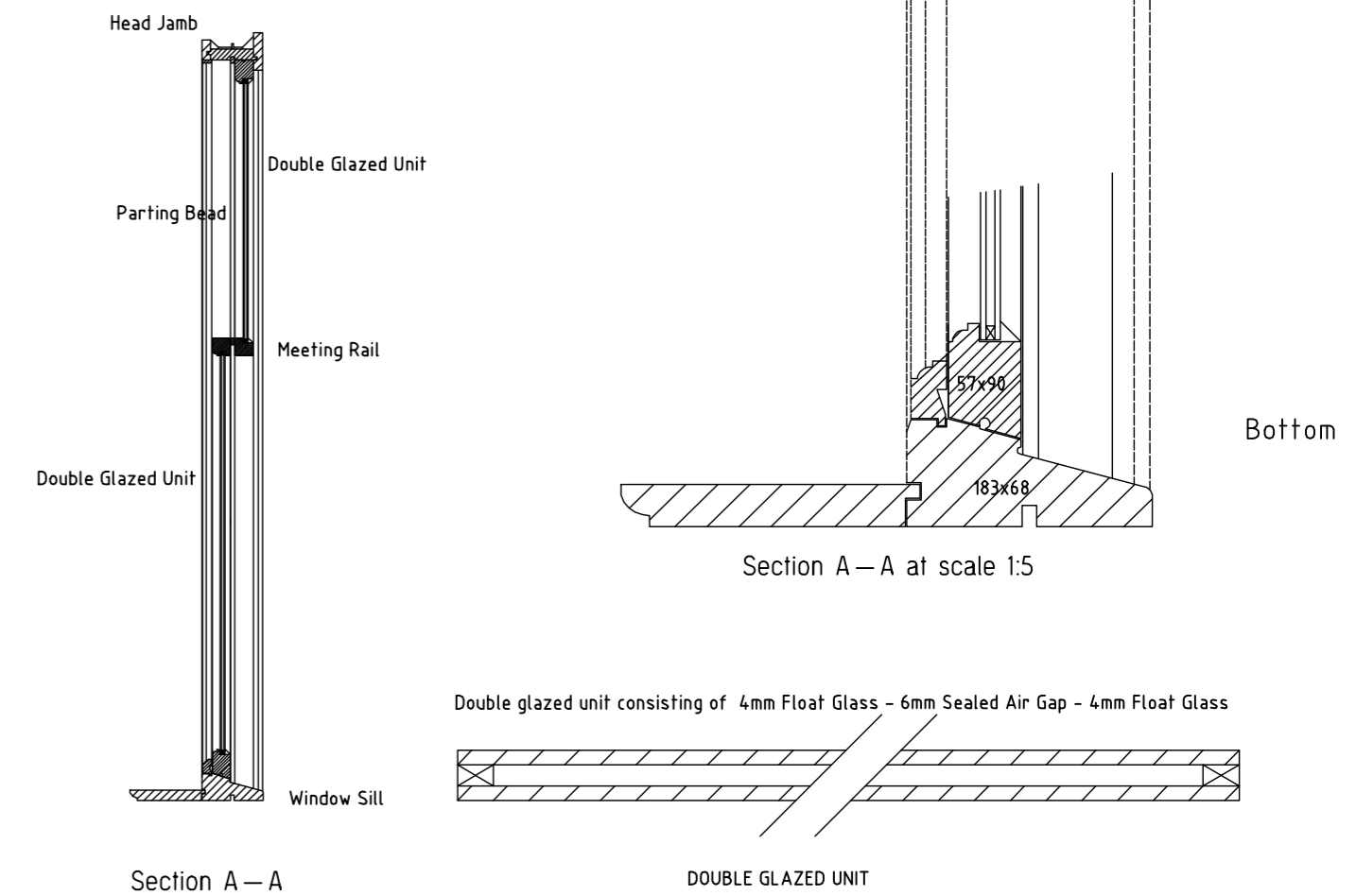
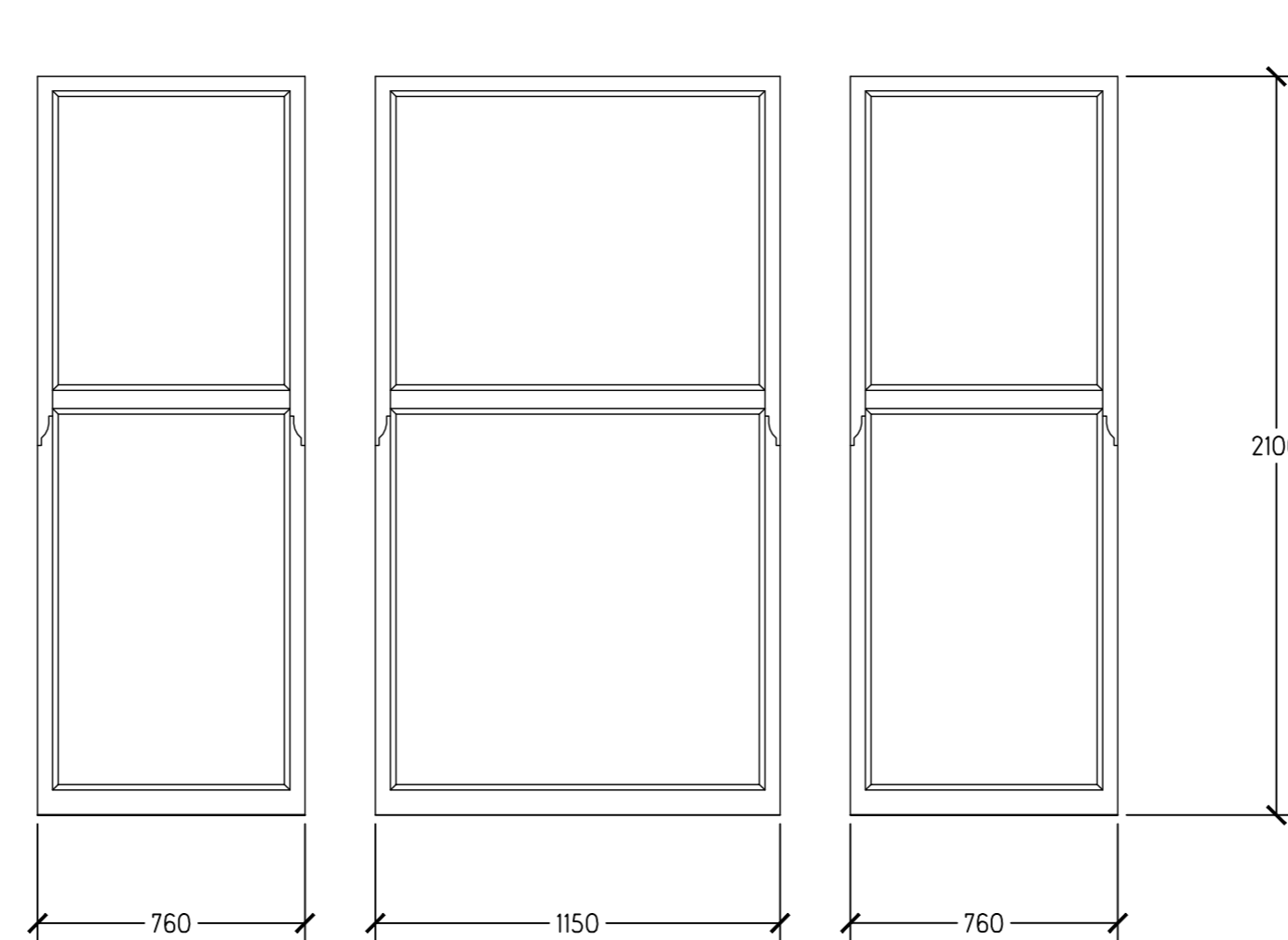
Windows to be manufactured from treated grade A red pine (sashes to be engineered timber).  
 Windows to be painted with traditional trowel mastic comprising burnt mastic sand and boiled linseed oil  
 Window sashes to be fitted with kite marked sealed double glazed units  
 Windows to be corded with wax cords and lead weights to be used to counter-balance the weight of the double-glazed units.  
 Simplex fittings to be fitted to window to allow lower sash to open in.  
 New interior baton rods and parting bead incorporating draught proof system i.e. new Aqua Mac compression gaskets  
 Exterior of window to be painted with demidekk microporous paint.  
 Interior to be painted with whatever paint is used to existing surrounds (one sealer one dustcoat one undercoat and one topcoat).



Bedroom Windows (as proposed)



Living Room Windows (as proposed)



Elevation section and detail

Scale 1:20 and 1:5 at A2

Listed Window  
 Refurbishment Ltd

Conservation window Specialists

Unit 14  
 70 Strathclyde Street  
 Glasgow G40 4JR

Tel: 0141 550 1616 Fax: 0141 550 1515

e-mail: sash-window@btconnect.com

