

DO NOT SCALE

If there should be any doubt or query regarding the interpretation of the information given on this Drawing, please enquire directly to the address and telephone number below before executing such part of the works.

The contents of this drawing are strictly confidential and must not in any circumstances be copied, shown, published or otherwise disclosed to anyone, outside the Rolton Group without express consent in writing.

NOTES

- 1) This drawing to be read in conjunction with all the relevant Rolton Group Limited Drawings and specifications.
- 2) All dimensions are in mm unless otherwise stated.
- 3) For General Steelwork Notes refer to drawing 00-0928/S/01.
- 4) Purlins to be Metsec 172Z16 or similar approved
Side Rails to be Metsec 172C18 or similar approved.
Eaves Beam to be Metsec 170E20 or similar approved.

ROLTON

GROUP

THE CHARLES PARKER BUILDING
MIDLAND ROAD, HIGHAM FERRERS
NORTHANTS NN10 8DN

DX 18954 RUSHDEN
Telephone +44 (0)1933 410909
Fax +44 (0)1933 410922
World Wide Web
www.rolton.com

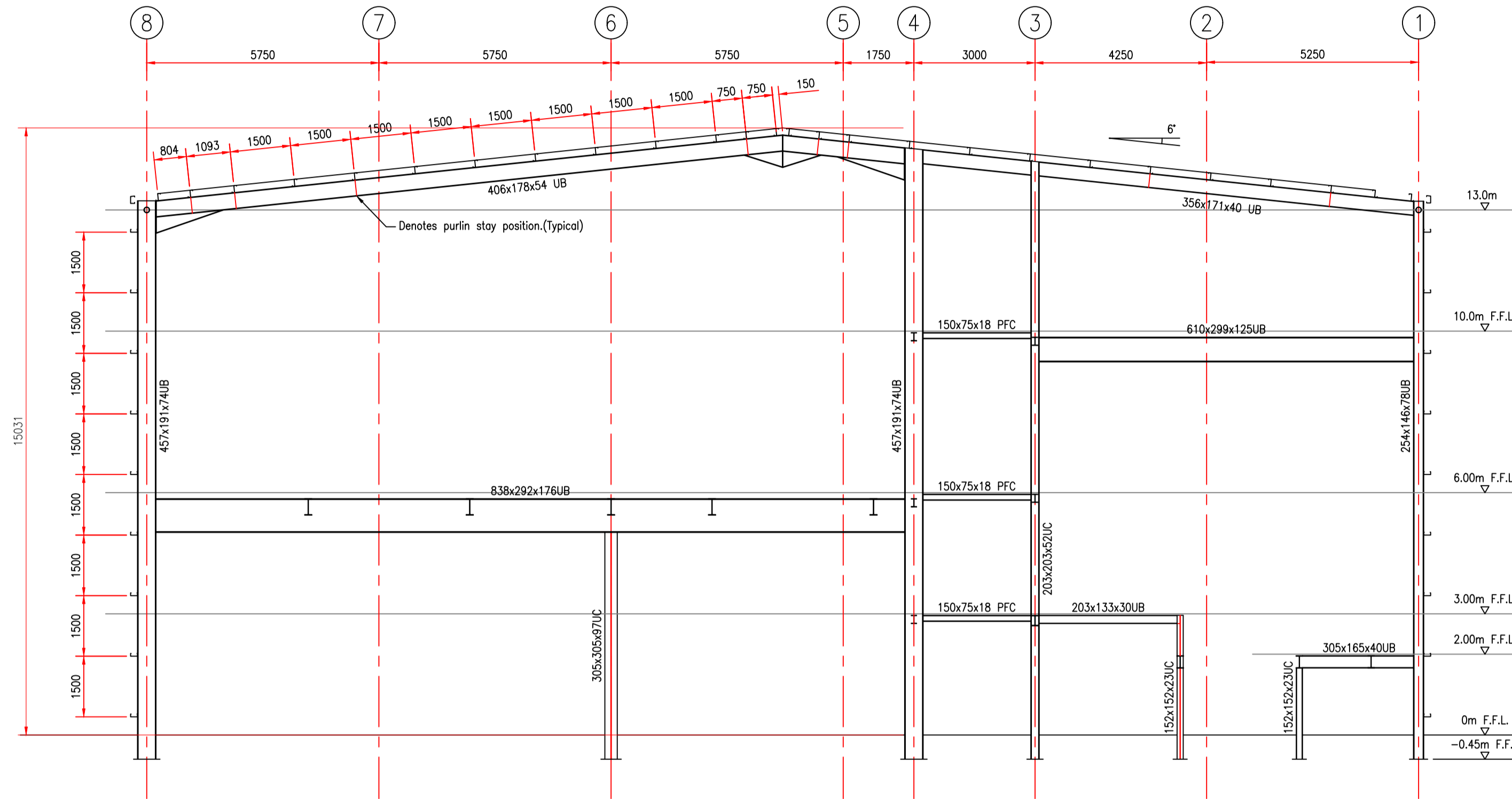
OLYMPUS HOUSE
STANILAND WAY, WERRINGTON
PETERBOROUGH PE4 6NA
Telephone +44 (0)1733 325 232
Fax +44 (0)1733 322 553

NO 6 THE COURTYARD
WARWICK ROAD, SOLIHULL
WEST MIDLANDS B91 3DA
Telephone +44 (0)121 711 8331
Fax +44 (0)121 711 8332

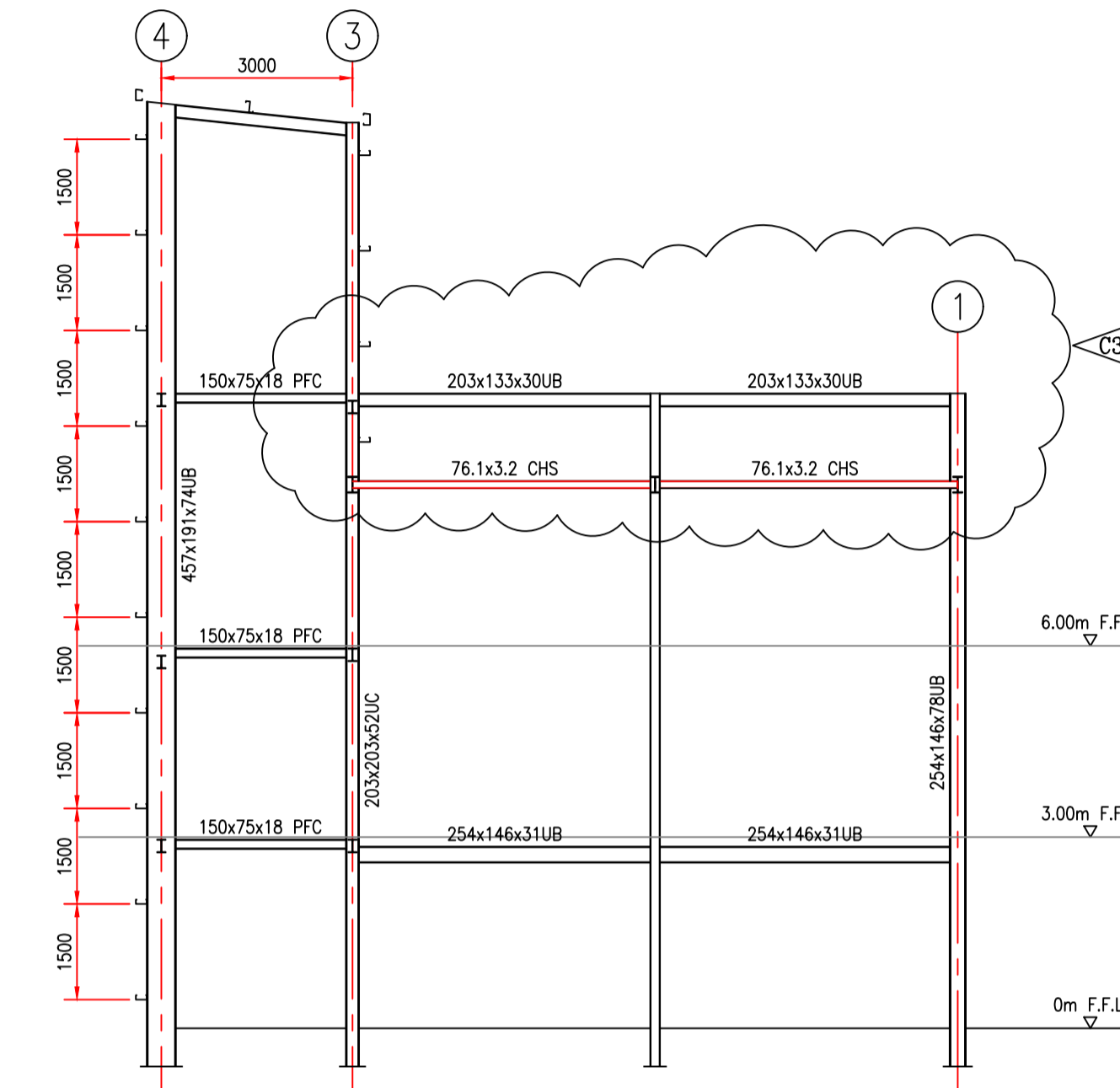
77 OXFORD STREET
LONDON W1R 1RB
Telephone +44 (0)207 659 2057
Fax +44 (0)207 659 2175

THE OLD FORGE
LONDON ROAD, WENDENS AMBO
SAFFRON WALDEN
ESSEX CB11 4JL
Telephone +44 (0)1799 506 627
Fax +44 (0)1799 541 337

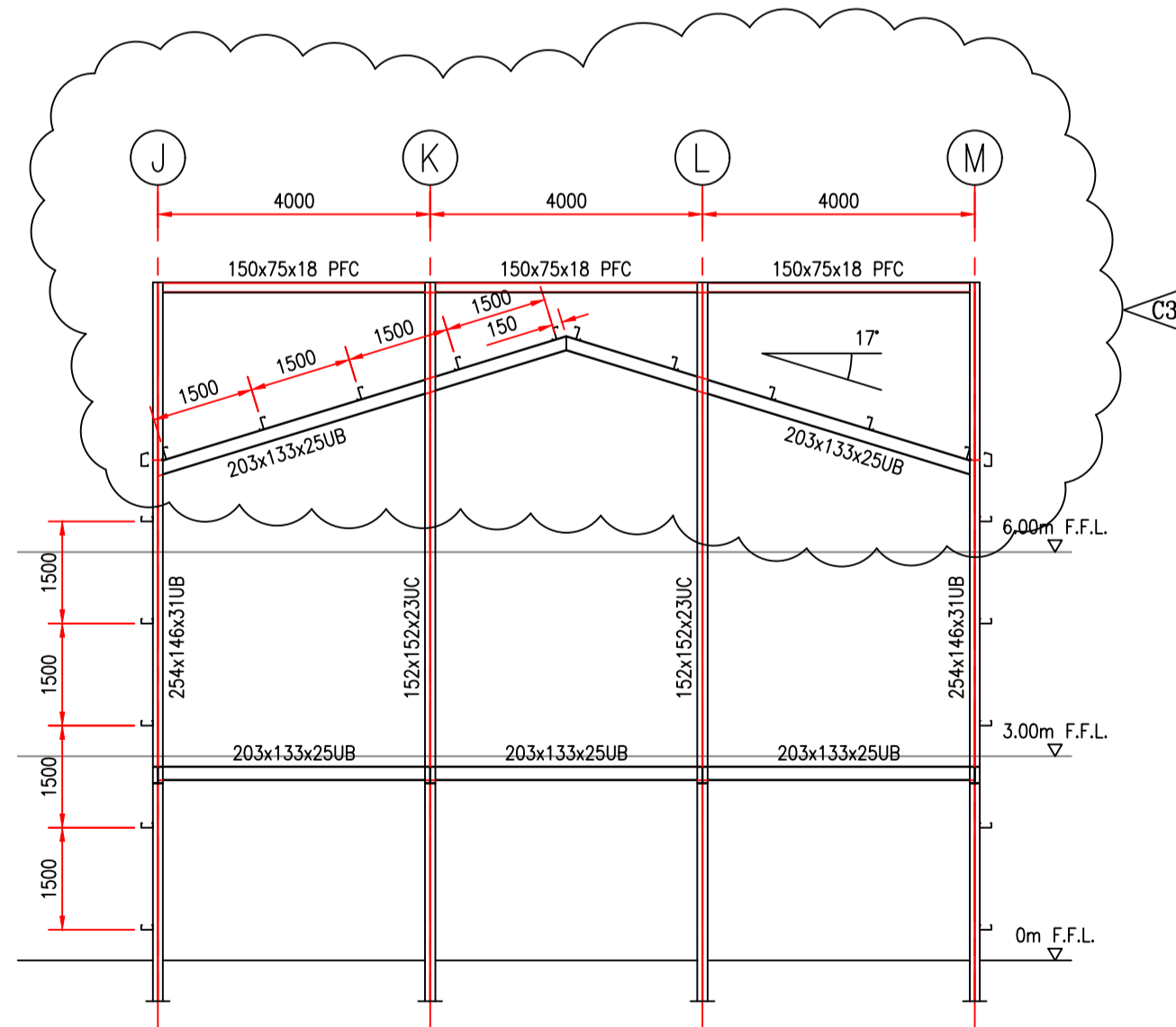
WILFORD HOUSE
1 CLIFTON LANE
WILFORD
NOTTINGHAM NG11 7AT
Telephone +44 (0)115 977 8156
Fax +44 (0)115 977 8008



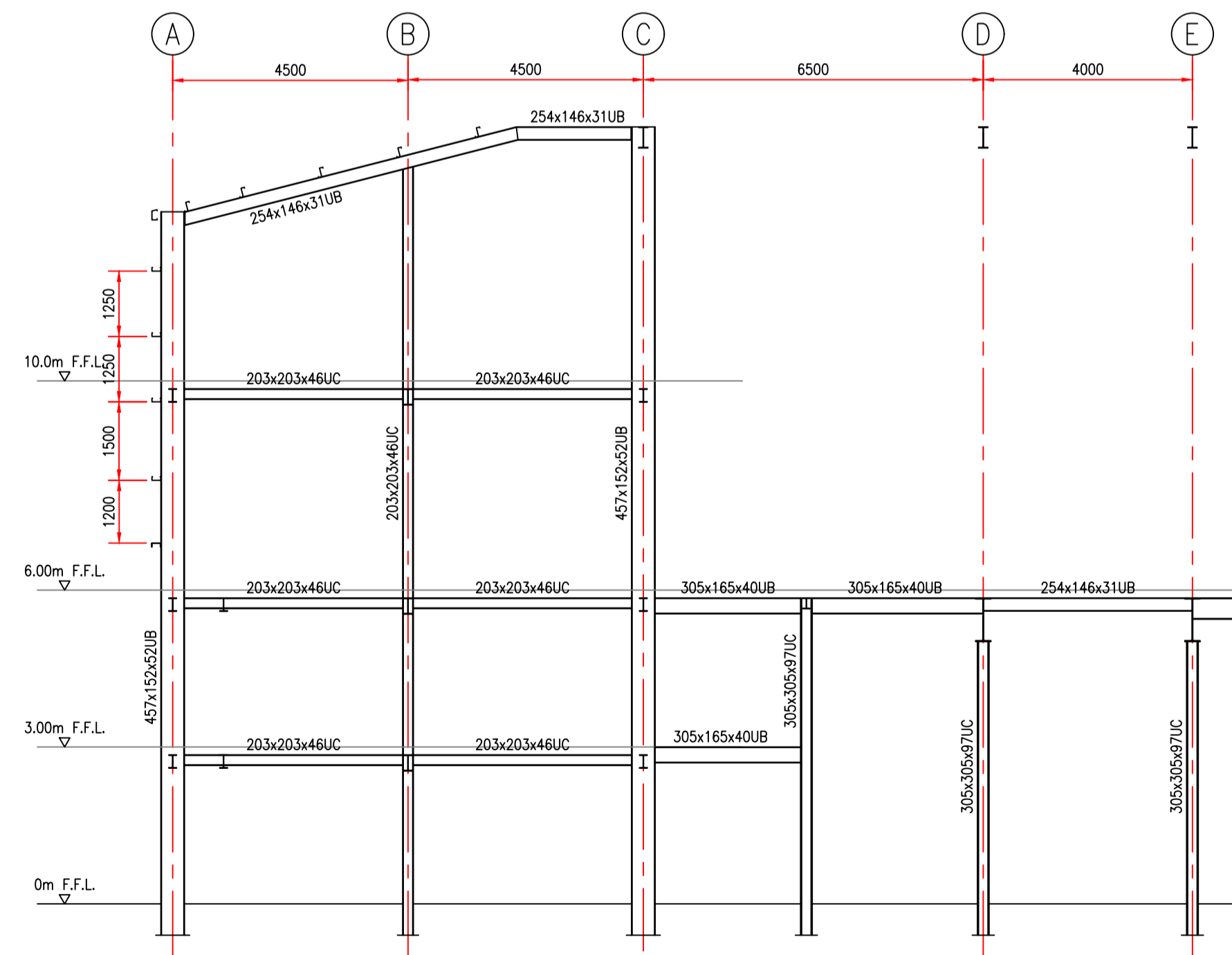
Section on Gridline F



Section on Gridline K
(Decking omitted for clarity)



Section on Gridline 1a



Section on Gridline 6

C3 02.08.01	Chiller gantry added.	
C2 15.06.01	Amended to suit revised plans. Sizes added.	
C1 11.06.01	Construction Issue	
Rev. Date	Description of Issue	Chkd

Issue Purpose:
Construction

Project
**Scott Bader
Polymer Plant
Wollaston**

Drawing Title:
**Special Polymers Building
Steelwork Sections**

Drawn By: **NT** Checked By: **PH**

Scales: **1:50@A1** Date: **09.05.01**
1:100@A3

Drawing No. _____ Rev. _____

00-0928/S/10 C3