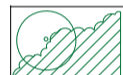




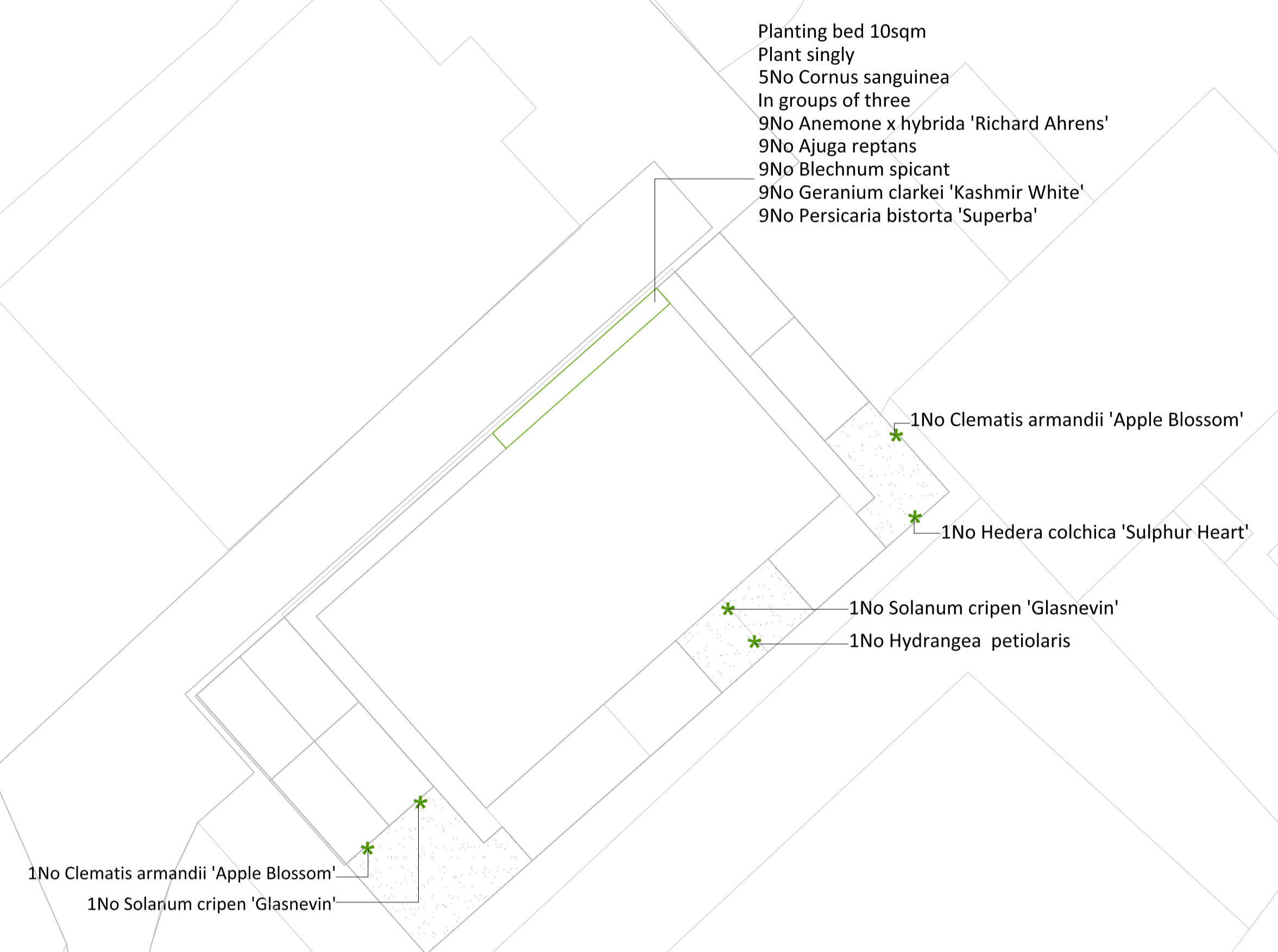
The planting shall be carried out in the first planting (seeding) season following completion of the development (between December and March inclusive).

All plant stock, plant handling and planting to be undertaken in accordance with the following British Standard Specifications and Code of Practice:

- BS 3936:1992 Part 1 Nursery Stock - Specification for trees and shrubs;
- BS 3936:1998 Part 10 Nursery Stock - Specification for ground cover plants;
- BS 4428:1989 - Code of Practice for General Landscaping Operations (excluding hard surfaces);
- BS 8545:2014 Trees from Nursery to Independence in the Landscape;
- The Code of Practice for Plant Handling 2002 (Horticultural Trades Association).

**LEGEND (SOFT WORKS)**

-  Retained trees and hedgrows
-  Shrubs and perennials
-  Wild flora grass - Emorsgate EL1 (or similar)



Shrubs and Perennials: Native = (n); wildlife friendly = (w); multi-stemmed (MS)					
Name	Pot Size	Height	Habit	Density per sqm	Number
Ajuga reptans (n)	2L	20-30cm	Native purple leaved ground cover with blue flowers summer 30cm	5	9
Anemone x hybrida 'Richard Ahrens' (w)	2l	20-30cm	Japanese anemone - late summer white flowers at 1.5m	7	9
Blechnum spicant (n)	2l	20-30cm	Evergreen native fern 45cm	7	9
Cornus sanguinea (n)	3l	20-40cm	Dogwood - Winter red stems native plant	1	5
Geranium clarkei 'Kashmir White' (w)	2l	10-20cm	Summer white clump forming 50cm	7	9
Geranium dalmaticum (w)	2l	5cm	Summer flowers pink clump forming 10cm	7	9
Persicaria bistorta 'Superba' (w)	2l	20-30cm	Herbaceous to semi evergreen with multiple spikes of pink summer flowers 90cm	5	9

**Notes**  
Plan to be read in conjunction with the engineer and landscape drawings.

No measurements to be scaled off drawing. Worked from figured dimensions only.

All dimensions shown on drawing are shown in millimetres unless otherwise stated.

All dimensions and levels to be checked on site. Landscape Architect to be notified immediately of any discrepancies prior to the commencement of works.



Date	Reason for revisions	By
Client: Amhurst Homes		
Project: Barn Rear Of Mulberry House, Wenden Road, Arkesden, Essex, CB11 4HF		
Drawing Title: Soft works		
Scale: 1:100 @ A1	Date: November 2023	
Drawing Number: 1409-01	Revision Number: A	