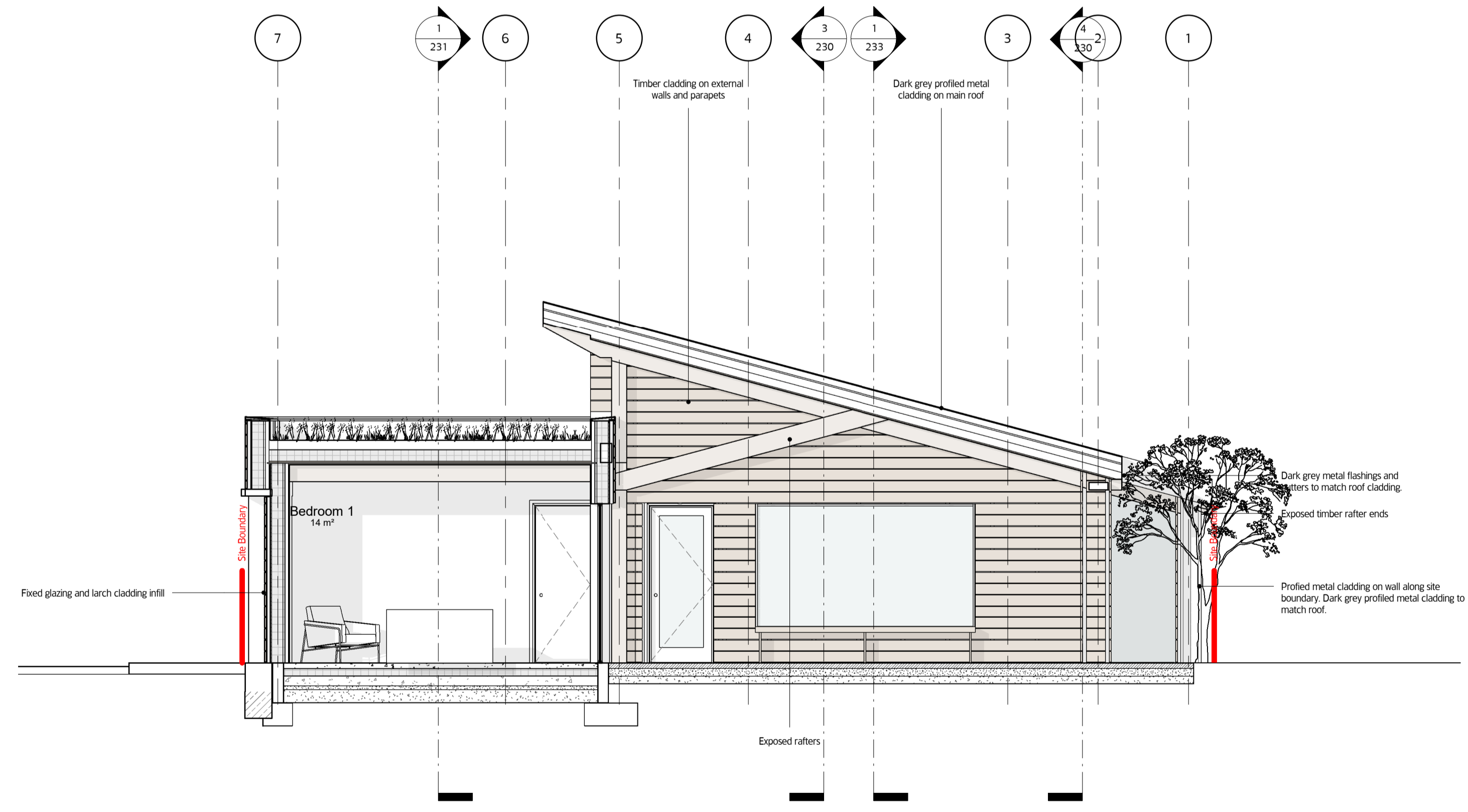
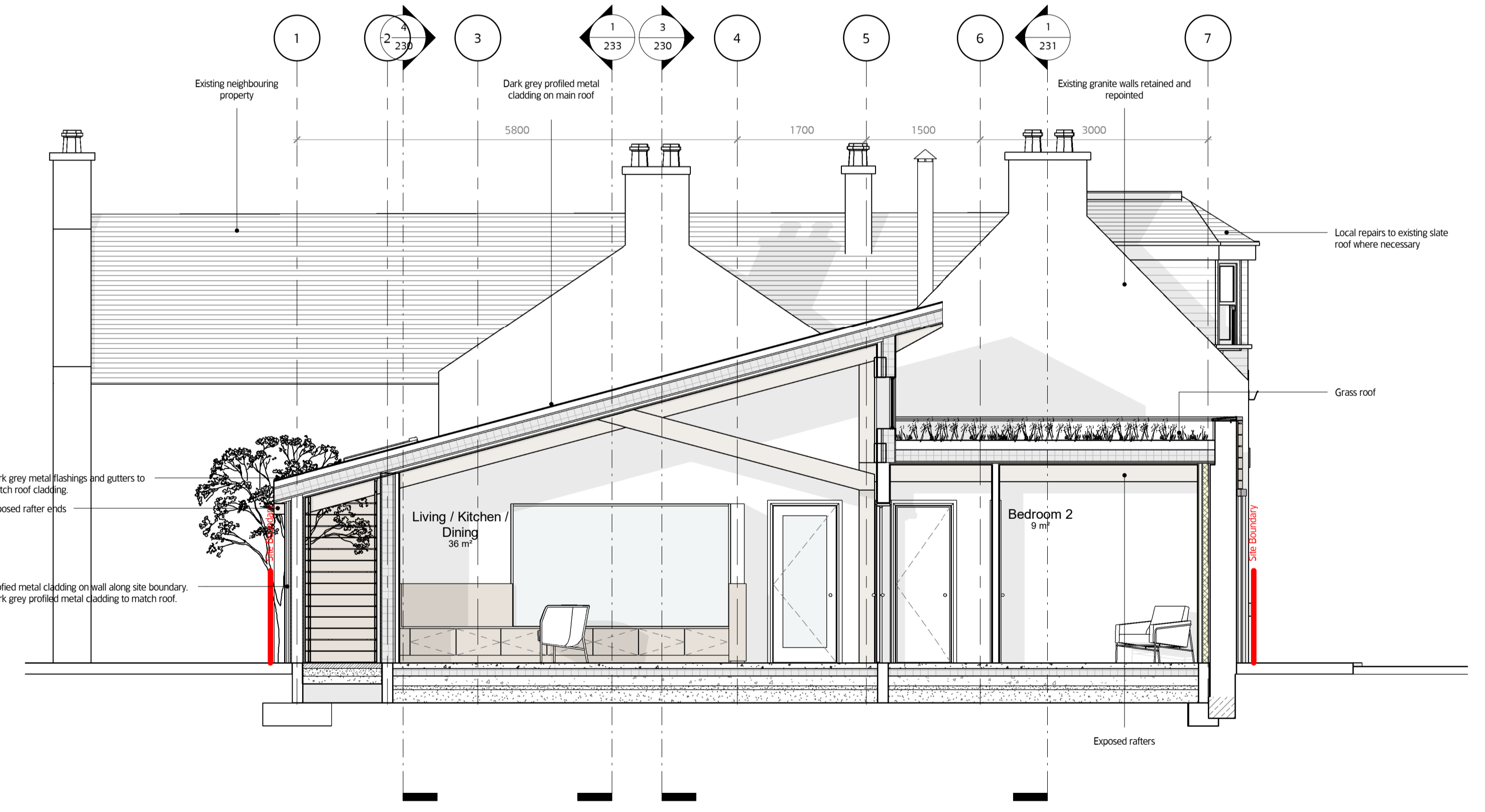




1 Section 5 - Through New Build Accommodation  
1:50



2 Section 6 - Through New Build Accommodation  
1:50



3 Section 7 - Through New Build Accommodation  
1:50

**MOXON**  
LONDON  
Great Western Studios, 65 Alfred Road, London W2 5EU  
t 0207 034 0088 f 0207 034 0099

SCOTLAND  
Quarry Studios, Craigmyle, Aberdeenshire AB35 5UL  
t 01339 742047 f 0207 034 0099  
info@moxonarchitects.com | www.moxonarchitects.com

Project		Dinner Pizzeria & Accommodation	
Drawing Title		Sections - Proposed (2 of 3)	
Status		Planning	
Drawn by	JK	Checked by	BPA
Date	28/11/23	Scale	1:50
Project No	763	Size	A1 (841x594mm)
Rev	01	Drawing No	231

01/12/2023 16:02:47