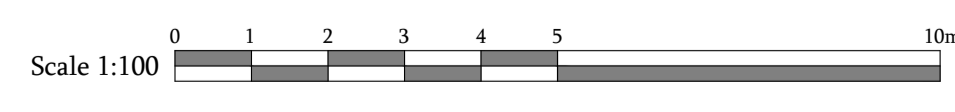
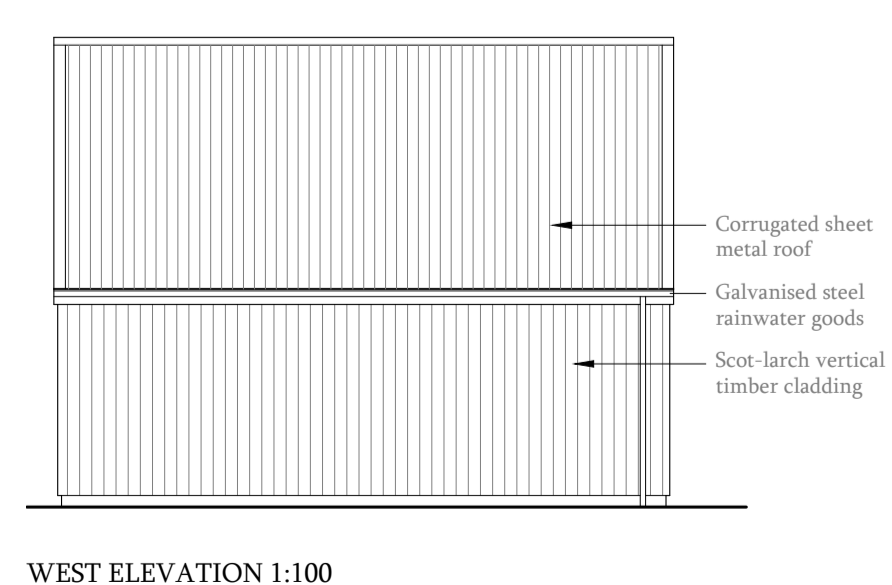
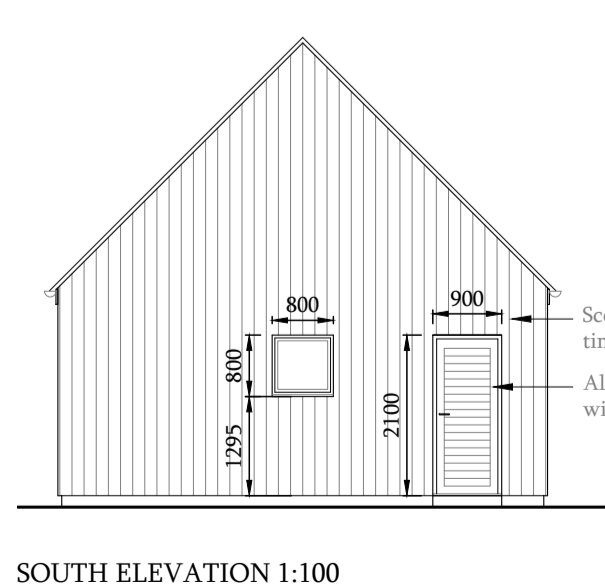
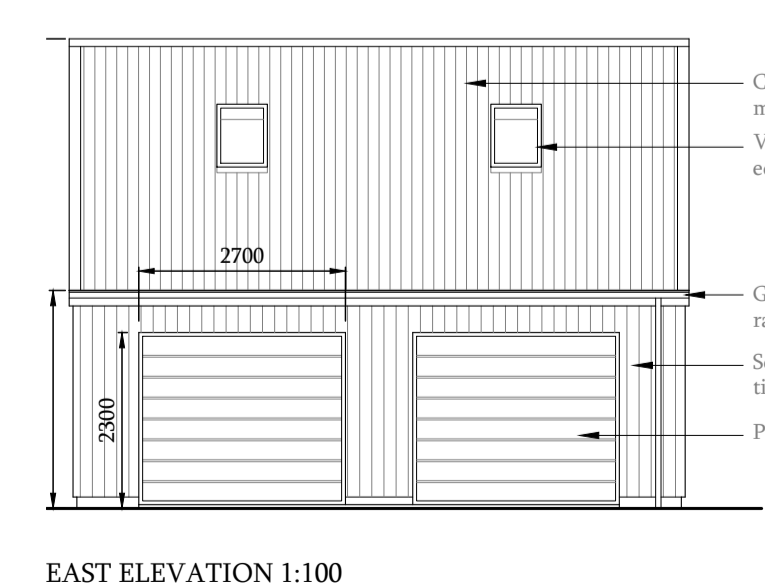
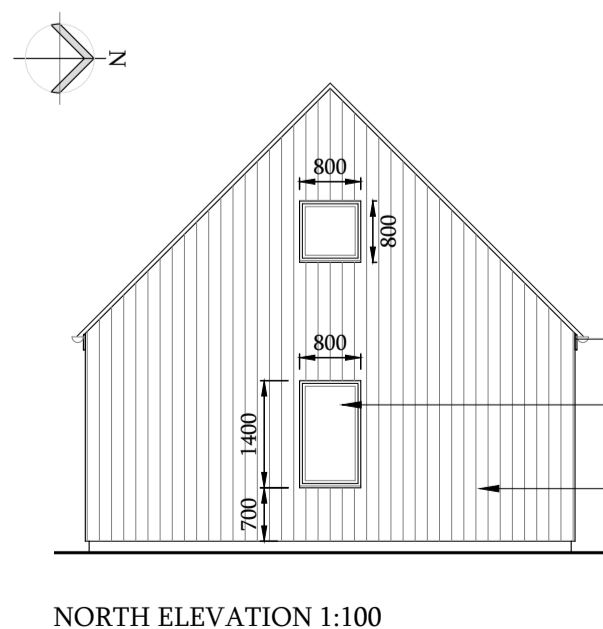
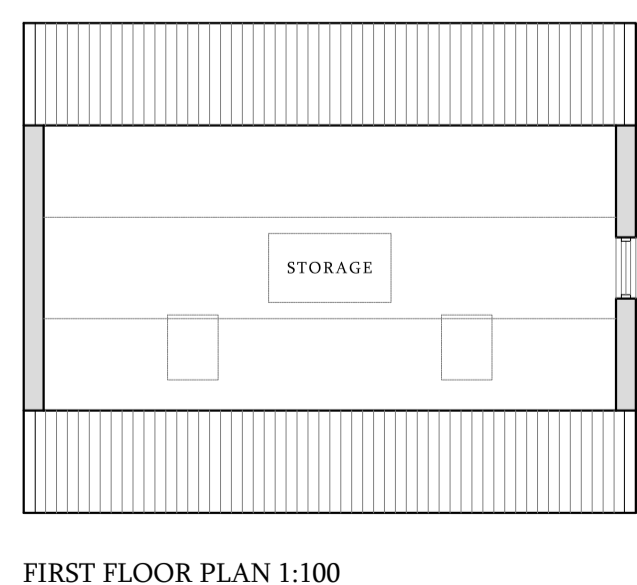
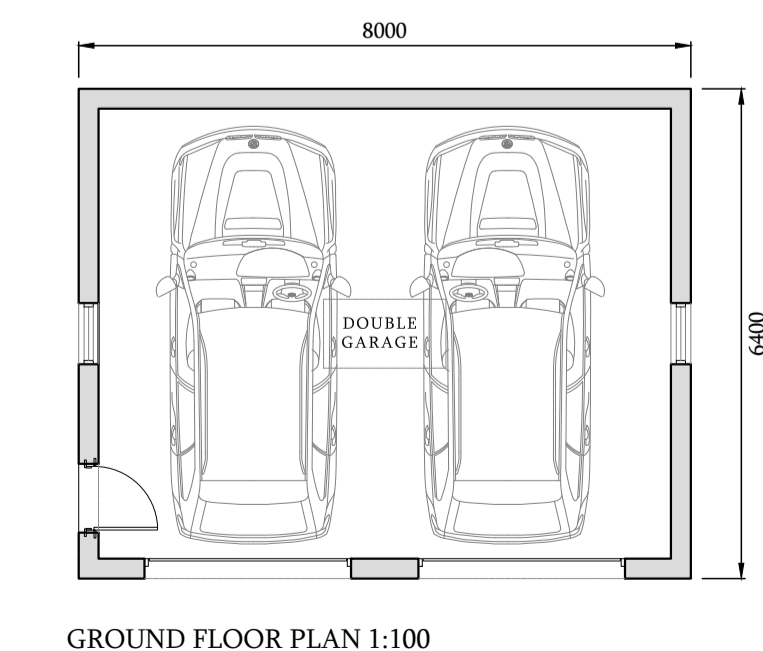
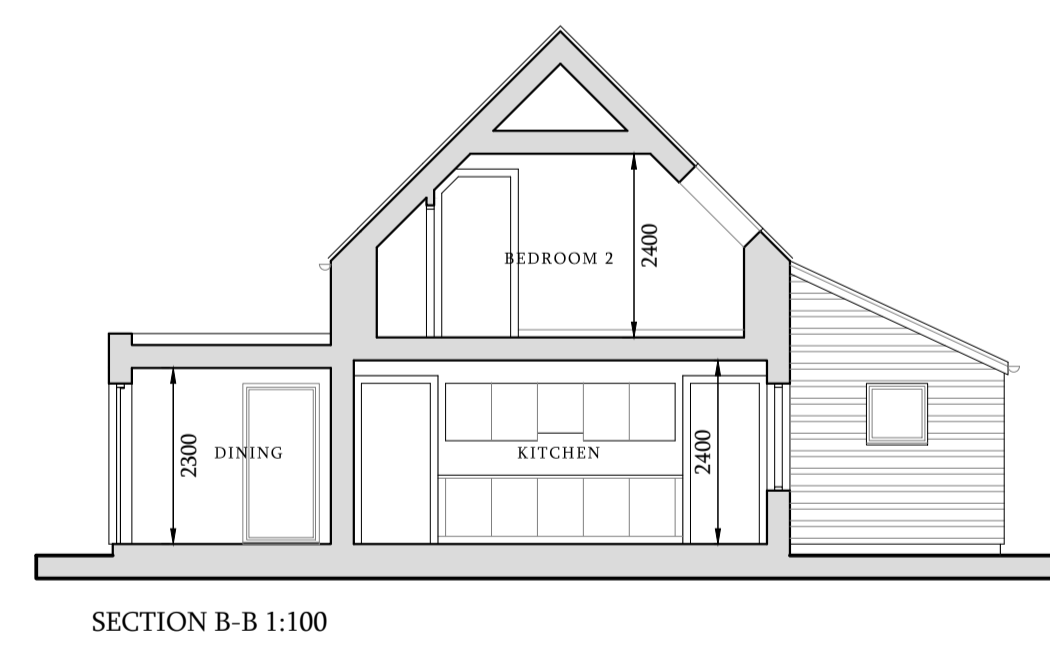
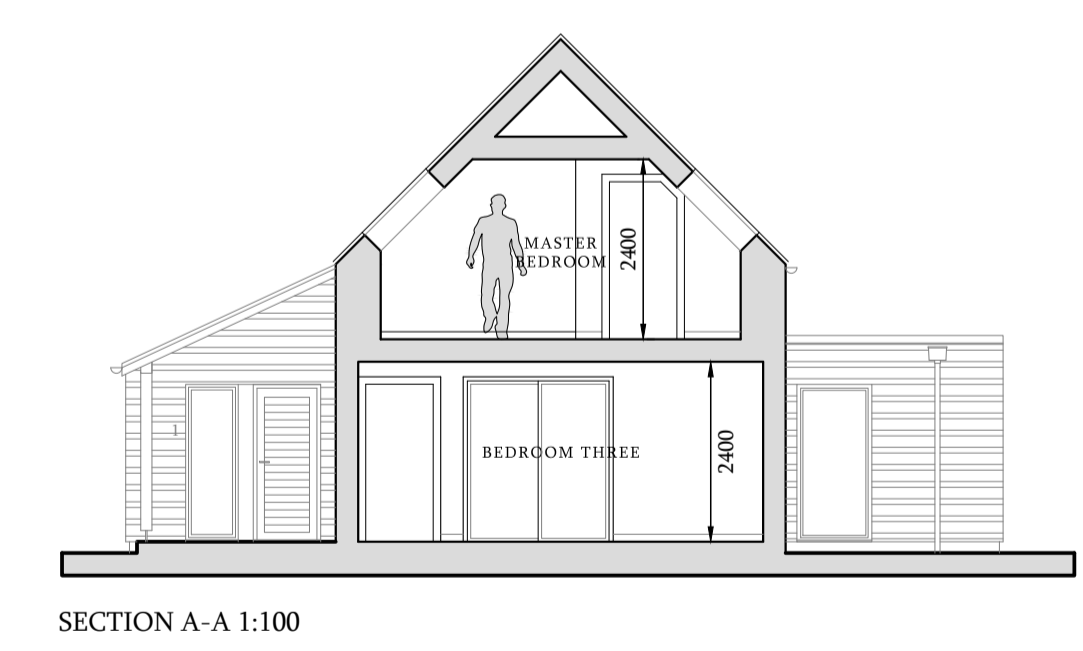
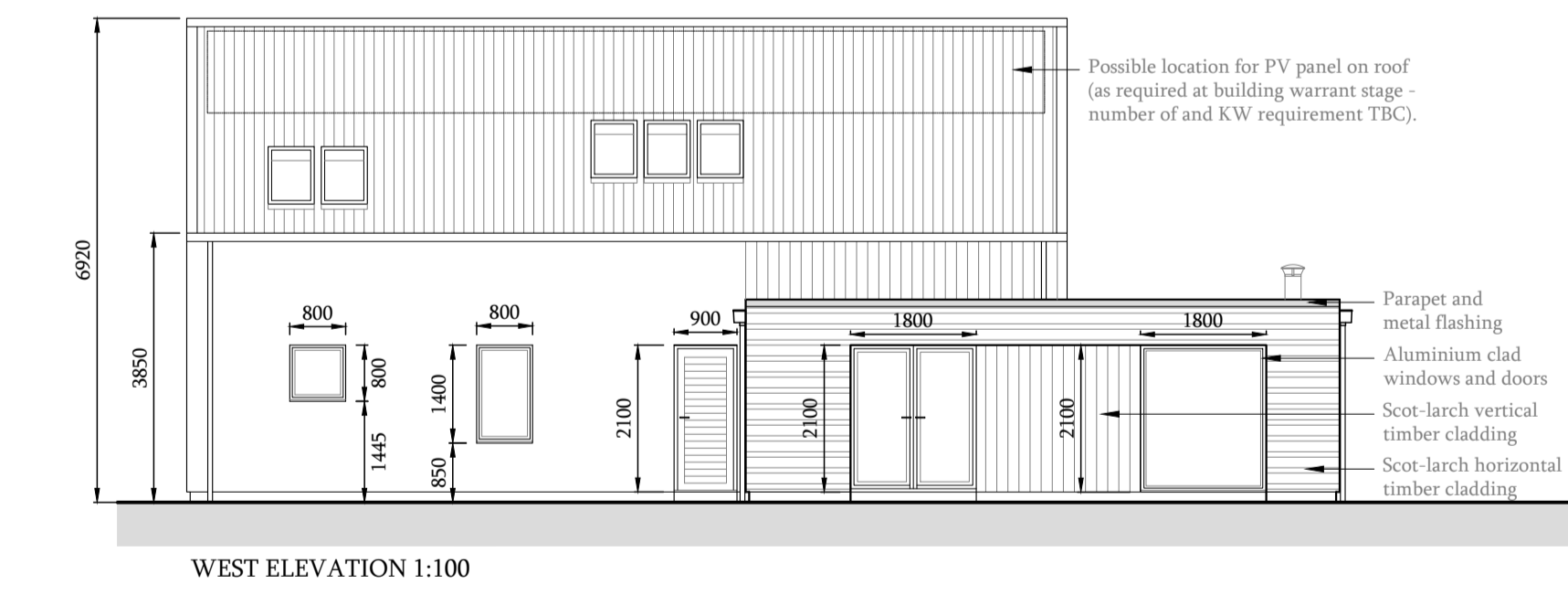
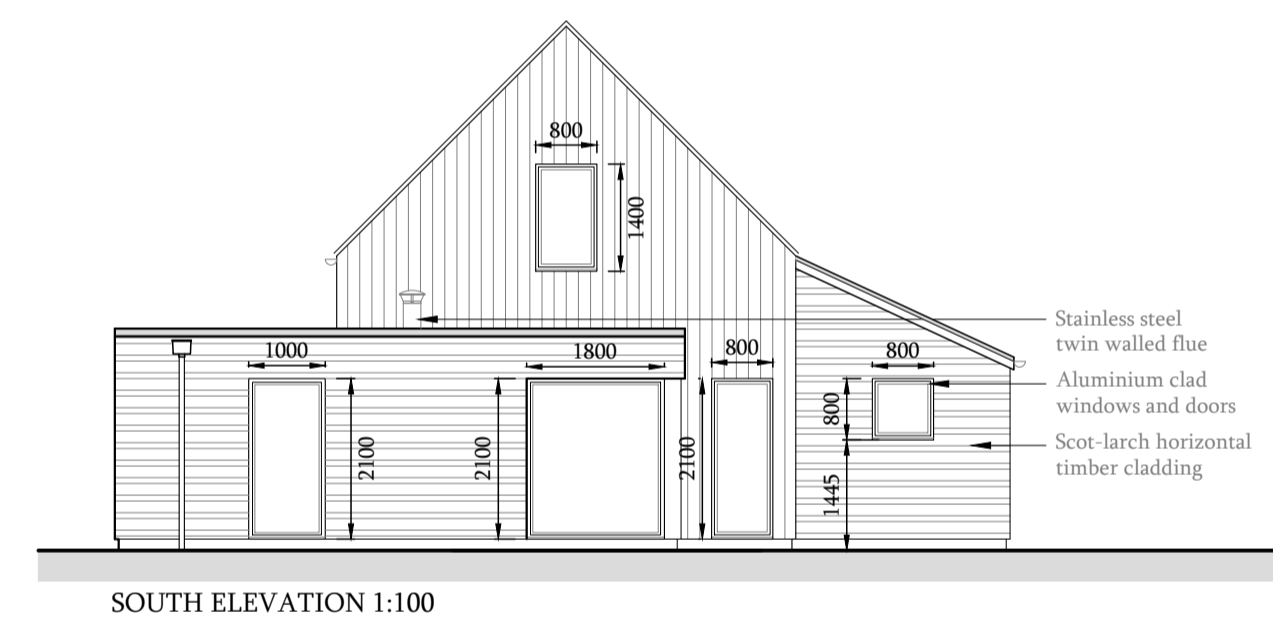
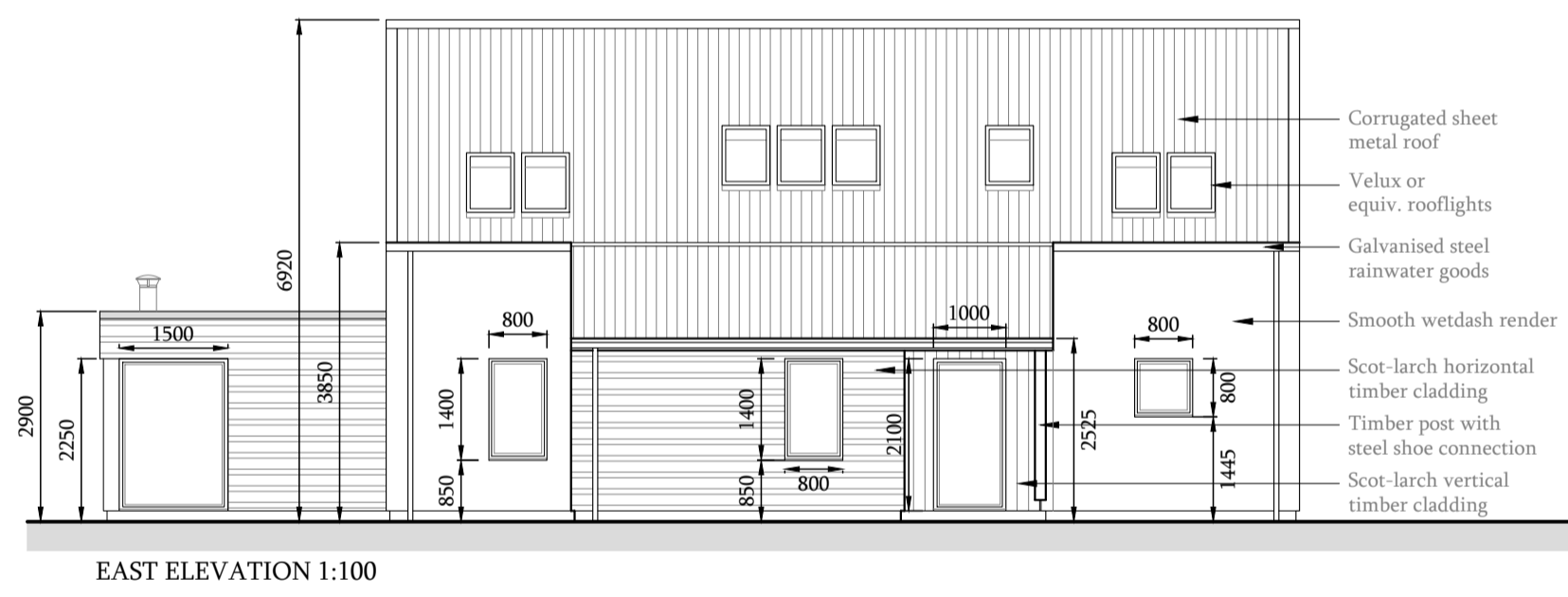
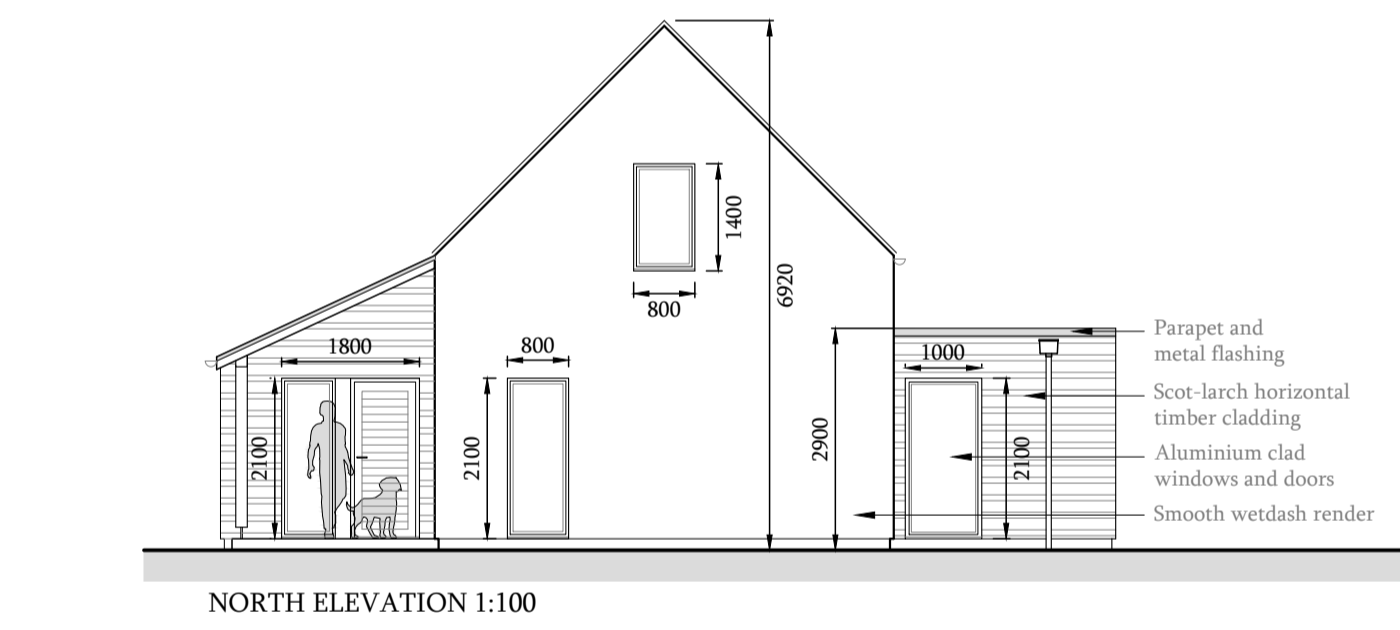


**Plot 8**  
GIFA 165m<sup>2</sup> (covered area excluded)

Ground Floor	
Living   Dining	36.5m <sup>2</sup>
Kitchen	22.5m <sup>2</sup>
Utility	3.8m <sup>2</sup>
Plant room	2.1m <sup>2</sup>
Hall (including stair)	9.0m <sup>2</sup>
Study   Single Bedroom 4	8.7m <sup>2</sup>
Double Bedroom 3	17.5m <sup>2</sup>
Bathroom	5.0m <sup>2</sup>
Cloaks	4.75m <sup>2</sup>
First Floor	
Double Bedroom 2 (including wardrobe)	19.2m <sup>2</sup>
Master Bedroom (Bedroom 1)	19.3m <sup>2</sup>
Master Bedroom En-Suite	4.5m <sup>2</sup>
Hall	7.3m <sup>2</sup>



**PLANNING**

**aka**  
Annie Kenyon Architects Ltd

North Gate Lodge  
Haddo  
Inverkeithny  
Humbly  
AB54 7XB  
tel/fax: 01464 851 621  
www.akenyonarchitects.com  
info@akenyonarchitects.com

**Client**  
Annie Kenyon Developments Ltd

**Job Title**  
Enabling Development  
Mains of Carnoustie  
Turrieff, Aberdeenshire

**Drawing Title**  
Proposed Plot 8 - Site Plan |  
Floor plans | Elevations & Section

**CAD Reference**

Scale at A1	Drawn	Chk	Date
As shown	PMcW	RI	NOV. 2023

Job No.	Drawing No.	Revision No.
900	PL-13	B