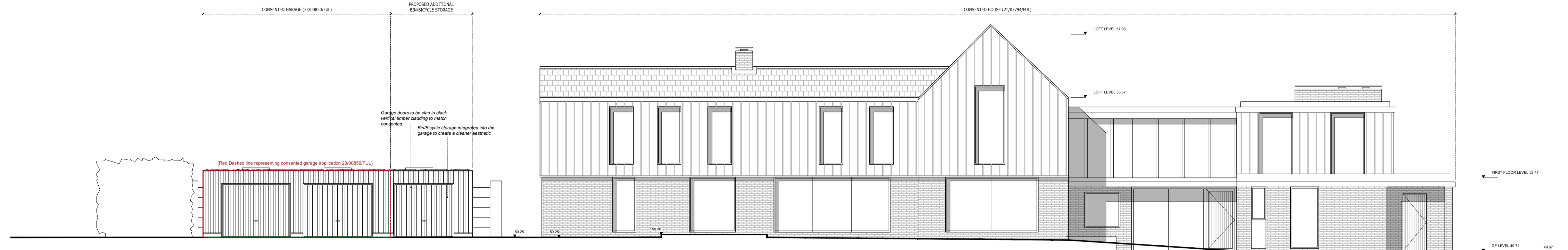
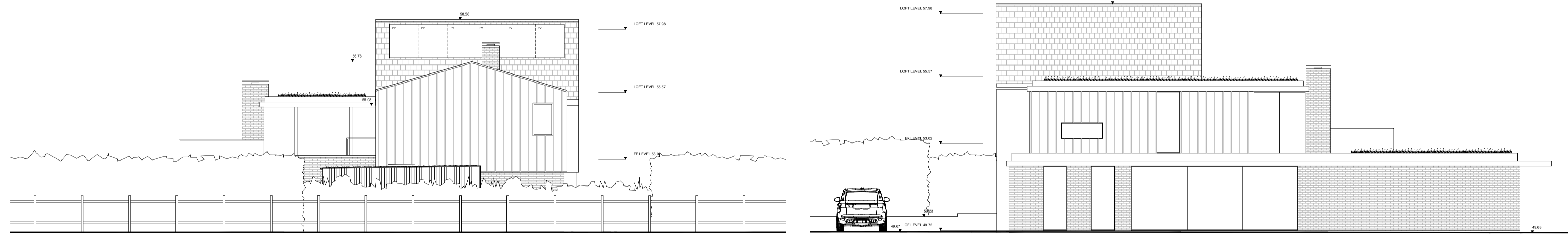


PROPOSED GARAGE LOCATION PLAN 1:1000

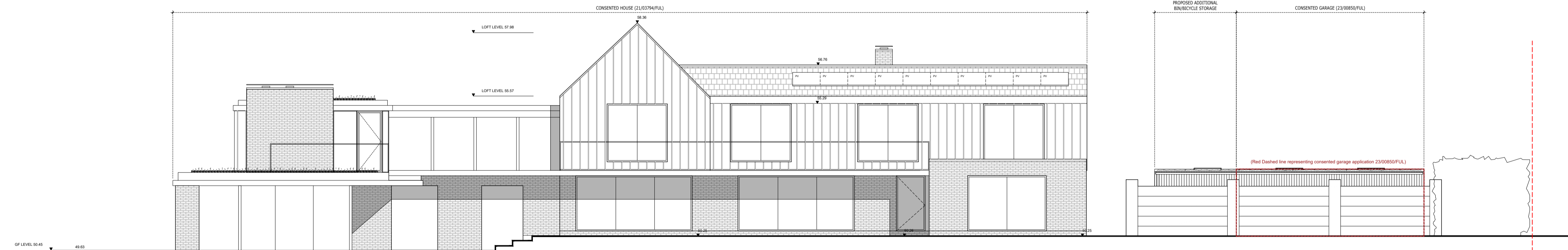


PROPOSED FRONT ELEVATION SHOWING BIN AND BICYCLE STORAGE IN THE CONTEXT OF THE CONSENTED HOUSE (21/03794/FUL) AND CONSENTED GARAGE (23/00850/FUL)



PROPOSED SIDE ELEVATION 01 WITH CONSENTED MAIN HOUSE (21/03794/FUL)

PROPOSED SIDE ELEVATION 02 WITH CONSENTED MAIN HOUSE (21/03794/FUL) (PROPOSED GARAGE NOT VISIBLE FROM THIS VIEWPOINT)



PROPOSED REAR ELEVATION SHOWING BIN AND BICYCLE STORAGE IN THE CONTEXT OF THE CONSENTED HOUSE (21/03794/FUL) AND CONSENTED GARAGE (23/00850/FUL)

This drawing represents the proposed addition to the consented garage (23/00850/FUL) in conjunction with the planning approved scheme no:21/03794/FUL.

The new garage is intended to include bin and bicycle storage and complement and integrate with both the existing building and the consented scheme as presented here.