

THE BARN, NORTH OF OLD RECTORY LODGE, NORTON ROAD, TOSTOCK IP30 9NU

LISTED BUILDING CONSENT APPLICATION REFERENCE: DC/20/03365



The proposed construction materials to be used would reflect the existing materials in the barn's original construction and as also seen very close by in local architecture. This approach will help to celebrate the existing character of the barn in the context of the former farmstead that was once part of an estate of considerable status: Rectory Farm (Buckle et al, 2000).



FENESTRATION

3. ACTION REQUIRED IN ACCORDANCE WITH A SPECIFIC TIMETABLE: AGREEMENT OF MATERIALS

Prior to the installation of any new fenestration, detailed elevation and section drawings through all new windows and doors, at I:10 and I:2, and details of proposed finish to fenestration shall be submitted to and approved, in writing, by the Local Planning Authority and shall thereafter be entirely implemented as approved.

Reason - In the interests of the character, integrity and preservation of the building.

(For sections and details, see page 11 onwards)

To celebrate the barn as a former threshing barn, it is proposed for metal windows to be installed as these would help retain an agricultural and industrial style. The black frames would be slim and minimal so to maximise the opportunity for the internal ancient timbers to be seen and revered externally; this is preferred as many mullions in the windows would not allow the ancient timber frame to shine through uninterrupted. Such windows would provide the thermal properties and practical use for new domestic use whilst also providing picture frames to help celebrate the important history of the ancient barn (see fig.1), creating a juxtaposition of old and new materials and old and new uses of the barn. Aluminium windows and bifold doors have been installed in a nearby listed property - Rookery Barn in Great Ashfield - with great effect (fig.2).



Fig.1 Examples of retained timbers with modern windows



Fig.2 Example of metal windows and bi-fold doors in a nearby barn conversion

There will be one exception: a 4-light diamond mullioned window (W6) in the eastern elevation will be reinstated in oak, as quite unusually for an agricultural barn (Heritage Assessment and Impact Statement, 2020) an internal original timber frame indicates that there was once a mullioned window with an internal shutter (fig.3) in this section. Recreating this historic window in oak will reflect this unique and special feature of the barn. For a similar example, see fig.4 - an original medieval oak mullion window (Historic England, 2023).



Fig.3 Evidence of a previous mullioned window with sliding shutter in Old Rectory Barn

All windows and bi-fold doors will have aluminium frames, powder coated in satin black.



Fig.4 Example of a mullioned window with sliding shutter

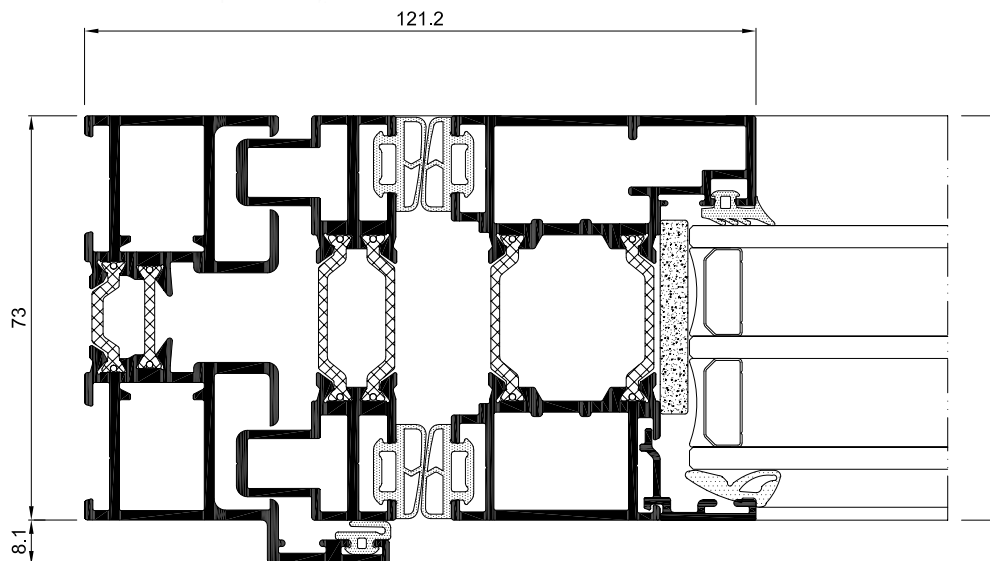
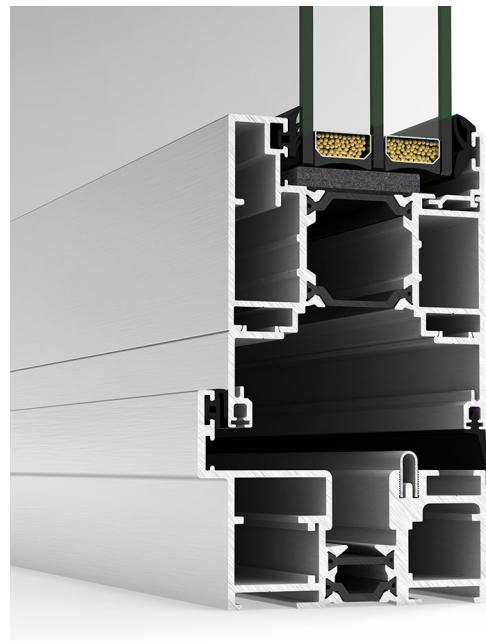


Fig.5 3D render of proposed mullioned window

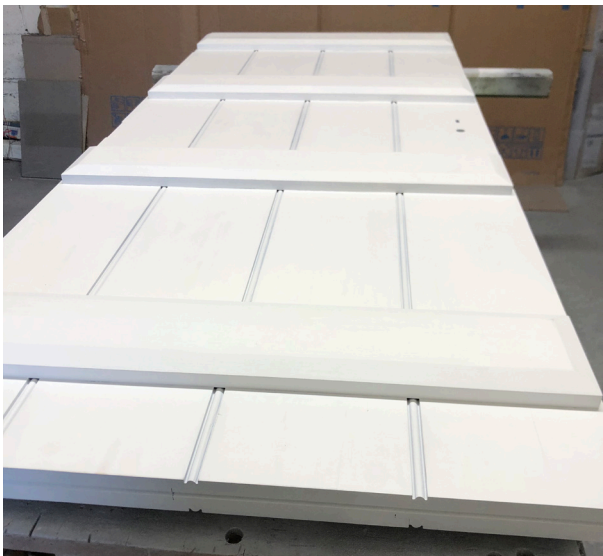
Main entrance doors (GSI & GS2) to be 3-section bifold, in the same material and black finish as the other windows.



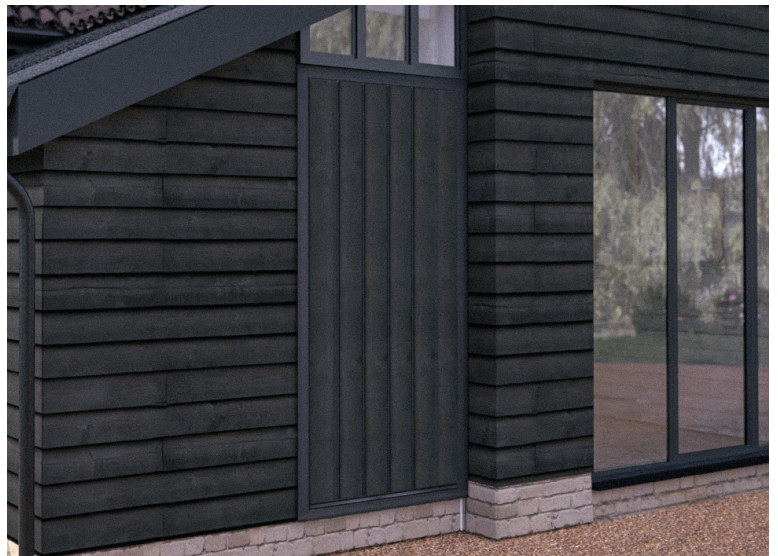
Example of style of proposed bi-fold doors (this example is a 5-section)



Sections through proposed bi-fold doors

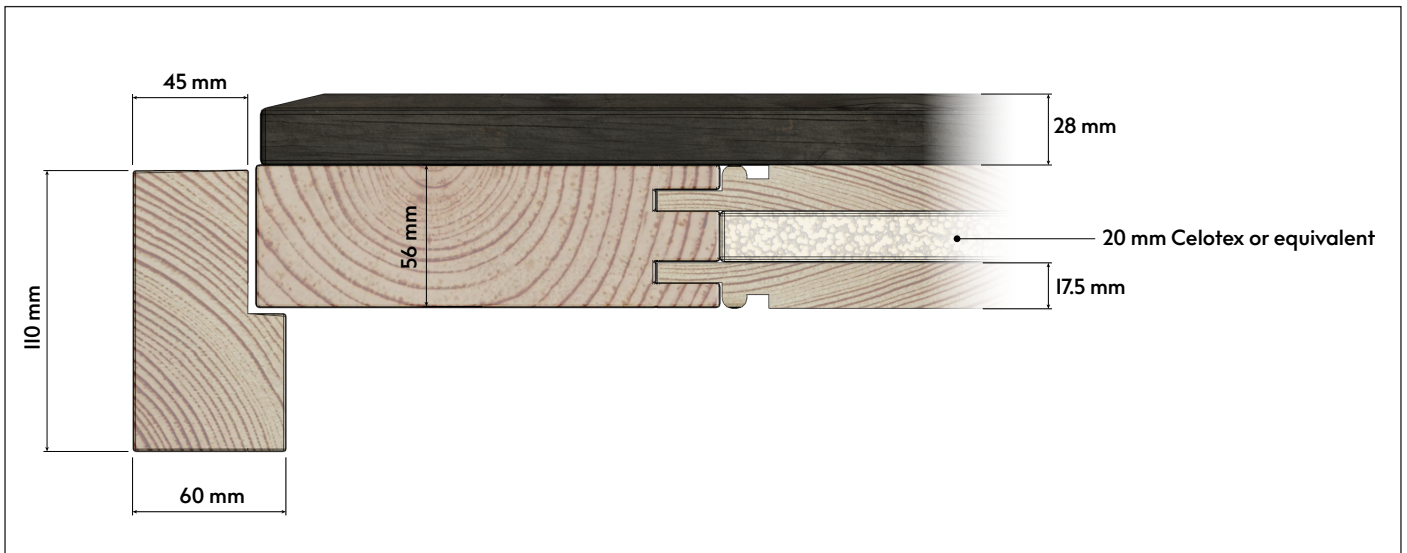


Example of similar door, but primed



3D render showing proposed style of door to lean-to

Exterior door to the lean-to (DI, entering the utility room) to be black stained / barn painted treated purpose made softwood, style and appearance as shown, fitted with proprietary weather seals and security ironmongery, hung with minimum 3no. 100mm butt hinges.



Lean-to door detail, showing jamb, plank and ledge

ROOF WINDOWS

4. ACTION REQUIRED IN ACCORDANCE WITH A SPECIFIC TIMETABLE: AGREEMENT OF MATERIALS

Prior to the installation of any rooflights, manufacturer's details of proposed rooflights shall be submitted to and approved, in writing, by the Local Planning Authority and shall thereafter be entirely implemented as approved.

Reason - In the interests of the character, integrity and preservation of the building.

It is proposed that we install Velux Heritage conservation roof windows or similar. They are designed to be in-keeping with heritage aesthetics of historic buildings. Slim and elegant and sitting flush to the tiles, they blend beautifully into the roofing material. Thoughtfully co-created with Architects and Conservation Officers, these roof windows enhance modern living, while maintaining the building's original character (Velux, 2023).



Fig.8 3D render of Velux Heritage conservation roof windows in The Barn.
(Please note: due to software limitations, the tiles shown in these 3D renders are not an exact representation of the actual tiles to be used/retained).



Fig.9 Example of a Velux Heritage conservation roof window

LEAN-TO ROOF

5. ACTION REQUIRED IN ACCORDANCE WITH A SPECIFIC TIMETABLE: AGREEMENT OF MATERIALS

Prior to the construction of the new lean-to, manufacturer's details of proposed slate for the lean-to roof shall be submitted to and approved, in writing, by the Local Planning Authority and shall thereafter be entirely implemented as approved.

Reason - In the interests of the character, integrity and preservation of the building.

To continue the industrial aesthetic of the barn it is proposed the new lean-to roof will be constructed in zinc (or equivalent), coloured 'anthra' or similar (fig.6). This roofing material is seen on the adjacent barns that once formed the original farmstead layout, therefore zinc would be a very appropriate material in this context (fig.7).



Fig.6 Example of a similar zinc roof



Fig.7 Existing zinc roofing on adjacent outbuildings

BRICKS

6. ACTION REQUIRED IN ACCORDANCE WITH A SPECIFIC TIMETABLE: AGREEMENT OF MATERIALS

Prior to the construction of the lean-to, a sample panel of brickwork, no less than one metre squared, showing proposed brick, bond, mortar and jointing, shall be erected on site, inspected and approved by the LPA, and retained on site for the duration of the works. All subsequent brickwork in the lean-to to match that in the agreed panel.

Reason - In the interests of the character, integrity and preservation of the building.

The use of bricks to rebuild parts of the barn that are similar in colour, style and texture of the existing buff bricks (as seen in the existing plinth wall extending around the main barn building, Fig.10) would be a complimentary authentic choice and would echo the barn's historical construction. Therefore, it is proposed that the plinth wall will be constructed in Imperial Reclamation Cambridge Buff 68MM bricks or similar (Fig.11) – please note, the top row of three bricks shown in the photo are actually some of the original bricks found in the grounds of the barn – this demonstrates just how similar they are.



Fig.10 Existing Brickwork



Fig.11 Proposed Brick Style

Similar brickwork is also seen in various architecture in the village of Tostock - in a garden wall at Green Farm House opposite the barn (fig.12), and also at a barn once belonging to another high status estate - Tostock House (fig.13). As the Tostock House barn demonstrates, the use of black timber weather boarding and buff bricks is aesthetically complimentary and showcases the historic use of such local materials that would have been readily available at the time of such Suffolk barns' original construction.



Fig.12



Fig.13

EXTERNAL FLUE

9. ACTION REQUIRED IN ACCORDANCE WITH A SPECIFIC TIMETABLE: AGREEMENT OF MATERIALS

Prior to the installation of the external flue, manufacturer's details of the proposed external flue shall be submitted to and approved, in writing, by the Local Planning Authority and shall thereafter be entirely implemented as approved.

Reason - In the interests of the character, integrity and preservation of the building.

Twin-wall flue system such as Schiedel Eco ICID or similar, 150mm internal diameter / 200mm outside diameter. Lead flashing dressed in to the pan tiles. Tip of the flue to project 600mm - 1000mm above roof ridge height. External portion of flue to be finished in black.



Fig.I4 Proposed roof terminal

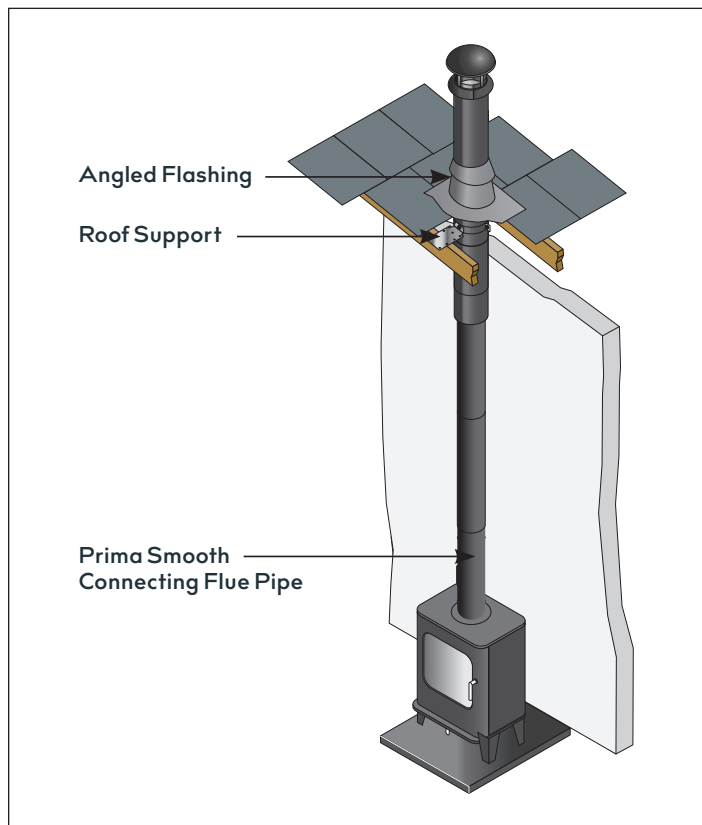
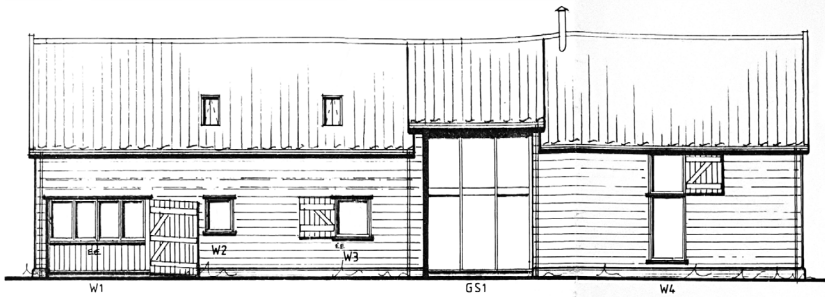


Fig.I5 Typical installation incorporating a Schiedel Eco ICID twin-wall flue

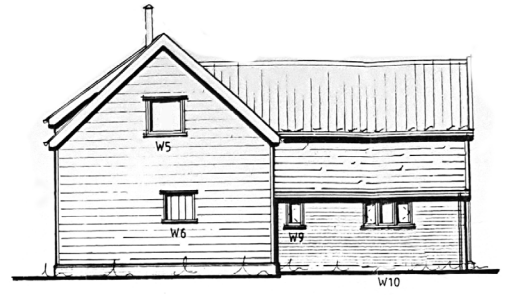
ORTHOGRAPHIC ELEVATIONS - PROPOSED



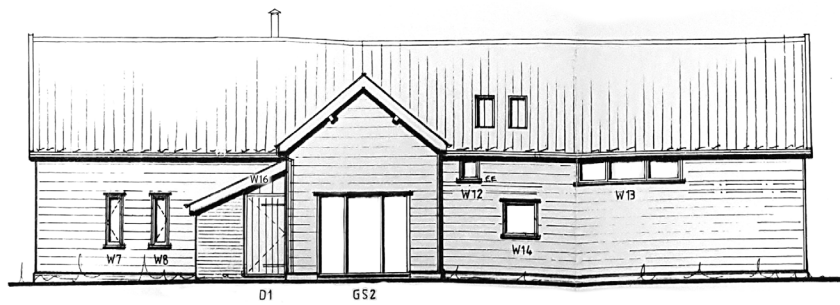
WINDOW DETAILS



SOUTH ELEVATION

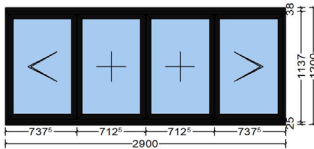


EAST ELEVATION



Position	Quantity	Description
W1	1 Pcs	Window Element

Exterior View



Window Element 2900 mm x 1200 mm, Consisting of two Side Hung Windows and two Fixed Sashes.

Uw value: 1.7 W/(m²K)

Colours:

RAL 9005CM (Jet black)

Profiles:

Frame: 3883 55mm/24mm LARGE OUTER FRAME HI (FLUSH FRAME)

Mullion/Transom: 3851 60mm/20mm STANDARD TRANSOM HI (NON FLUSH TRANSOM)

Window Vent: 3821 50mm/13mm SLIM SASH HI

Add-On Profiles: 3837 180mm SUB CILL , 3895 38mm ADD-ON FOR FLUSH OUTER FRAME

Window Hardware:

2 x CASEMENT 003

Handle: Handle 373812, Silver

Friction Stay (Turn): Friction Stay (Turn) up to 35 kg

Additional Locking: With 2 Pieces Additional

Guide: With

2 x CASEMENT 001

Glazing:

4 x 2x4mm 4MM CLR TGH / 4MM CLR TGH U_g=1.0 W/(m²K)

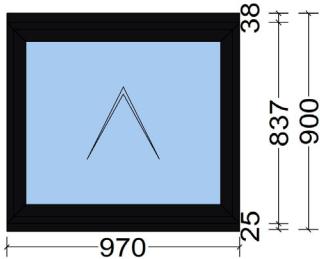
4MM CLR TGH EXT / 4MM CLR TGH INT

BLACK SPACER, ARGON, PLAN TOT +

1 x T/VENT MRK 2 5000

Position	Quantity	Description
W2	1 Pcs	Window Element

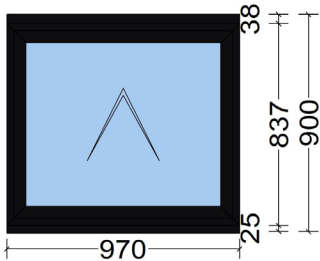
Exterior View



Window Element 970 mm x 900 mm, Consisting of a Top Hung Window.
 Uw value: 1.7 W/(m²K)
 Colours:
 RAL 9005CM (Jet black)
 Profiles:
 Frame: 3883 55mm/24mm LARGE OUTER FRAME HI (FLUSH FRAME)
 Window Vent: 3821 50mm/13mm SLIM SASH HI
 Add-On Profiles: 3837 180mm SUB CILL , 3895 38mm ADD-ON FOR FLUSH OUTER FRAME
 Window Hardware:
 1 x CASEMENT 004
 Handle: Handle 373812 (Gear Right), Silver
 Stay: Stay up to 50 kg
 Additional Locking: With 2 Pieces Additional
 Guide: With
 Glazing:
 1 x 2x4mm 4MM CLR TGH / 4MM CLR TGH U_g=1.0 W/(m²K)
 4MM CLR TGH EXT / 4MM CLR TGH INT
 BLACK SPACER, ARGON, PLAN TOT +
 1 x T/VENT MRK 2 5000

W3	1 Pcs	Window Element
----	-------	----------------

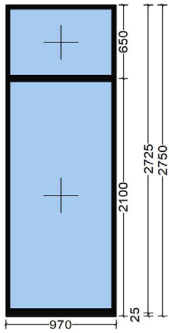
Exterior View



Window Element 970 mm x 900 mm, Consisting of a Top Hung Window.
 Uw value: 1.7 W/(m²K)
 Colours:
 RAL 9005CM (Jet black)
 Profiles:
 Frame: 3883 55mm/24mm LARGE OUTER FRAME HI (FLUSH FRAME)
 Window Vent: 3821 50mm/13mm SLIM SASH HI
 Add-On Profiles: 3837 180mm SUB CILL , 3895 38mm ADD-ON FOR FLUSH OUTER FRAME
 Window Hardware:
 1 x CASEMENT 004
 Handle: Handle 373812 (Gear Right), Silver
 Stay: Stay up to 50 kg
 Additional Locking: With 2 Pieces Additional
 Guide: With
 Glazing:
 1 x 2x4mm 4MM CLR TGH / 4MM CLR TGH U_g=1.0 W/(m²K)
 4MM CLR TGH EXT / 4MM CLR TGH INT
 BLACK SPACER, ARGON, PLAN TOT +
 1 x T/VENT MRK 2 5000

Position	Quantity	Description
W4	1 Pcs	Window Element

Exterior View

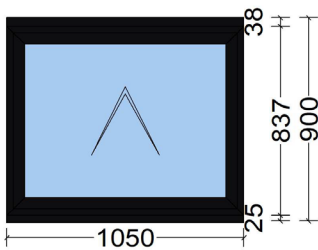


Window Element 970 mm x 2750 mm, Consisting of two Fixed Fields.
 Uw value: 1.3 W/(m²K)
 Colours:
 RAL 9005CM (Jet black)
 Profiles:
 Frame: 3831 41mm/21mm SLIM OUTER FRAME HI (NON FLUSH FRAME)
 Mullion/Transom: 3851 60mm/20mm STANDARD TRANSOM HI (NON FLUSH TRANSOM)
 Add-On Profile: 3837 180mm SUB CILL

Glazing:
 2 x 2x4mm 4MM CLR TGH / 4MM CLR TGH U_g=1.0 W/(m²K)
 4MM CLR TGH EXT / 4MM CLR TGH INT
 BLACK SPACER, ARGON, PLAN TOT +

W5	1 Pcs	Window Element
----	-------	----------------

Exterior View



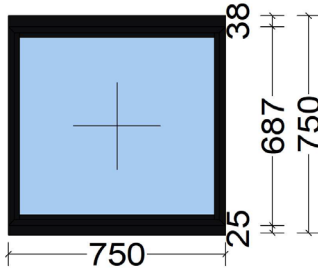
Window Element 1050 mm x 900 mm, Consisting of a Top Hung Window.
 Uw value: 1.7 W/(m²K)
 Colours:
 RAL 9005CM (Jet black)
 Profiles:
 Frame: 3883 55mm/24mm LARGE OUTER FRAME HI (FLUSH FRAME)
 Window Vent: 3821 50mm/13mm SLIM SASH HI
 Add-On Profiles: 3837 180mm SUB CILL , 3895 38mm ADD-ON FOR FLUSH OUTER FRAME

Window Hardware:
 1 x CASEMENT 004
 Handle: Handle 373812 (Gear Right), Silver
 Stay: Stay up to 50 kg
 Additional Locking: With 2 Pieces Additional
 Guide: With

Glazing:
 1 x 2x4mm 4MM CLR TGH / 4MM CLR TGH U_g=1.0 W/(m²K)
 4MM CLR TGH EXT / 4MM CLR TGH INT
 BLACK SPACER, ARGON, PLAN TOT +
 1 x T/VENT MRK 2 5000

W6 1 Pcs Window Element

Exterior View



Window Element 750 mm x 750 mm, Consisting of a Top Hung Window.

Uw value: 1.6 W/(m²K)

Colours:

RAL 9005CM (Jet black)

Profiles:

Frame: 3831 41mm/21mm SLIM OUTER FRAME HI (NON FLUSH FRAME)

Add-On Profiles: 3837 180mm SUB CILL , 3849 38mm ADD-ON FOR 70mm PROFILES HI

Glazing:

1 x 2x4mm 4MM CLR TGH / 4MM CLR TGH - LOW IRON U_g=1.0 W/(m²K)

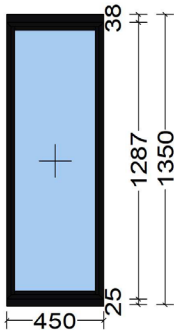
4MM CLR TGH EXT / 4MM CLR TGH INT

BLACK SPACER, ARGON, PLAN TOT +

1 x T/VENT MRK 2 5000

W7 1 Pcs Window Element

Exterior View



Window Element 450 mm x 1350 mm, Consisting of a Fixed Field.

Uw value: 1.5 W/(m²K)

Colours:

RAL 9005CM (Jet black)

Profiles:

Frame: 3831 41mm/21mm SLIM OUTER FRAME HI (NON FLUSH FRAME)

Add-On Profiles: 3837 180mm SUB CILL , 3849 38mm ADD-ON FOR 70mm PROFILES HI

Glazing:

1 x 2x4mm 4MM CLR TGH / 4MM CLR TGH U_g=1.0 W/(m²K)

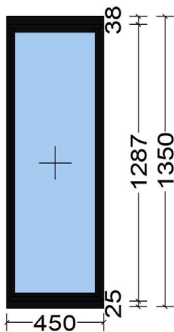
4MM CLR TGH EXT / 4MM CLR TGH INT

BLACK SPACER, ARGON, PLAN TOT +

1 x T/VENT MRK 2 5000

W8 1 Pcs Window Element

Exterior View



Window Element 450 mm x 1350 mm, Consisting of a Fixed Field.

Uw value: 1.5 W/(m²K)

Colours:

RAL 9005CM (Jet black)

Profiles:

Frame: 3831 41mm/21mm SLIM OUTER FRAME HI (NON FLUSH FRAME)

Add-On Profiles: 3837 180mm SUB CILL , 3849 38mm ADD-ON FOR 70mm PROFILES HI

Glazing:

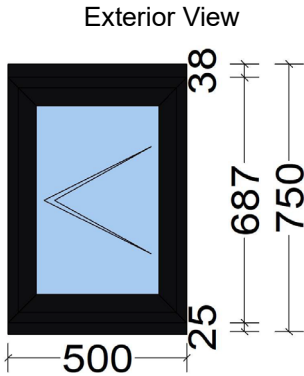
1 x 2x4mm 4MM CLR TGH / 4MM CLR TGH U_g=1.0 W/(m²K)

4MM CLR TGH EXT / 4MM CLR TGH INT

BLACK SPACER, ARGON, PLAN TOT +

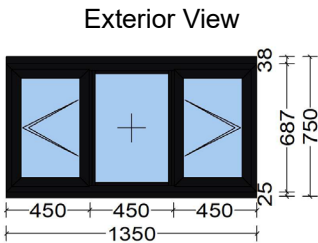
1 x T/VENT MRK 2 5000

Position	Quantity	Description
W9	1 Pcs	Window Element

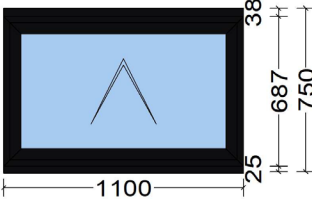


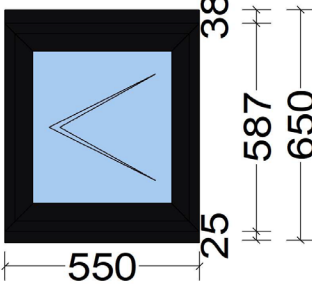
Window Element 500 mm x 750 mm, Consisting of a Side Hung Window.
 Uw value: 2.0 W/(m²K)
 Colours:
 RAL 9005CM (Jet black)
 Profiles:
 Frame: 3883 55mm/24mm LARGE OUTER FRAME HI (FLUSH FRAME)
 Window Vent: 3821 50mm/13mm SLIM SASH HI
 Add-On Profiles: 3837 180mm SUB CILL , 3895 38mm ADD-ON FOR FLUSH OUTER FRAME
 Window Hardware:
 1 x CASEMENT 003
 Handle: Handle 373812, Silver
 Friction Stay (Turn): Friction Stay (Turn) up to 35 kg
 Additional Locking: With 2 Pieces Additional
 Guide: With
 Glazing:
 1 x 2x4mm 4MM CLR TGH / 4MM CLR TGH U_g=1.0 W/(m²K)
 4MM CLR TGH EXT / 4MM CLR TGH INT
 BLACK SPACER, ARGON, PLAN TOT +
 1 x T/VENT MRK 2 5000

W10	1 Pcs	Window Element
-----	-------	----------------



Window Element 1350 mm x 750 mm, Consisting of two Side Hung Windows and a Fixed Field.
 Uw value: 2.0 W/(m²K)
 Colours:
 RAL 9005CM (Jet black)
 Profiles:
 Frame: 3883 55mm/24mm LARGE OUTER FRAME HI (FLUSH FRAME)
 Mullion/Transom: 3851 60mm/20mm STANDARD TRANSOM HI (NON FLUSH TRANSOM)
 Window Vent: 3821 50mm/13mm SLIM SASH HI
 Add-On Profiles: 3837 180mm SUB CILL , 3895 38mm ADD-ON FOR FLUSH OUTER FRAME
 Window Hardware:
 2 x CASEMENT 003
 Handle: Handle 373812, Silver
 Friction Stay (Turn): Friction Stay (Turn) up to 35 kg
 Additional Locking: With 2 Pieces Additional
 Guide: With
 Glazing:
 3 x 2x4mm 4MM CLR TGH / 4MM CLR TGH U_g=1.0 W/(m²K)
 4MM CLR TGH EXT / 4MM CLR TGH INT
 BLACK SPACER, ARGON, PLAN TOT +
 1 x T/VENT MRK 2 5000

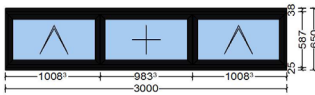
Position	Quantity	Description
W11	1 Pcs	Window Element
<p>Exterior View</p> 		
<p>Window Element 1100 mm x 750 mm, Consisting of a Top Hung Window. Uw value: 1.8 W/(m²K) Colours: RAL 9005CM (Jet black) Profiles: Frame: 3831 41mm/21mm SLIM OUTER FRAME HI (NON FLUSH FRAME) Window Vent: 3821 50mm/13mm SLIM SASH HI Add-On Profiles: 3837 180mm SUB CILL , 3849 38mm ADD-ON FOR 70mm PROFILES HI Window Hardware: 1 x CASEMENT 004 Handle: Handle 373812 (Gear Right), Silver Stay: Stay up to 50 kg Additional Locking: With 2 Pieces Additional Guide: With Glazing: 1 x 2x4mm 4MM CLR TGH / 4MM CLR TGH U_g=1.0 W/(m²K) 4MM CLR TGH EXT / 4MM CLR TGH INT BLACK SPACER, ARGON, PLAN TOT +</p>		

W12	1 Pcs	Window Element
<p>Exterior View</p> 		
<p>Window Element 550 mm x 650 mm, Consisting of a Side Hung Window. Uw value: 2.1 W/(m²K) Colours: RAL 9005CM (Jet black) Profiles: Frame: 3883 55mm/24mm LARGE OUTER FRAME HI (FLUSH FRAME) Window Vent: 3821 50mm/13mm SLIM SASH HI Add-On Profiles: 3837 180mm SUB CILL , 3895 38mm ADD-ON FOR FLUSH OUTER FRAME Window Hardware: 1 x CASEMENT 003 Handle: Handle 373812, Silver Friction Stay (Turn): Friction Stay (Turn) up to 35 kg Additional Locking: With 2 Pieces Additional Guide: With Glazing: 1 x 2x4mm 4MM CLR TGH / 4MM CLR TGH U_g=1.0 W/(m²K) 4MM CLR TGH EXT / 4MM CLR TGH INT BLACK SPACER, ARGON, PLAN TOT + 1 x T/VENT MRK 2 5000</p>		

W13

1 Pcs Window Element

Exterior View



Window Element 3000 mm x 650 mm, Consisting of two Top Hung Windows and a Fixed Sash.

Uw value: 1.9 W/(m²K)

Colours:

RAL 9005CM (Jet black)

Profiles:

Frame: 3883 55mm/24mm LARGE OUTER FRAME HI (FLUSH FRAME)

Mullion/Transom: 3851 60mm/20mm STANDARD TRANSOM HI (NON FLUSH TRANSOM)

Window Vent: 3821 50mm/13mm SLIM SASH HI

Add-On Profiles: 3837 180mm SUB CILL , 3895 38mm ADD-ON FOR FLUSH OUTER FRAME

Window Hardware:

2 x CASEMENT 004

Handle: Handle 373812 (Gear Right), Silver

Stay: Stay up to 50 kg

Additional Locking: With 2 Pieces Additional

Guide: With

1 x CASEMENT 001

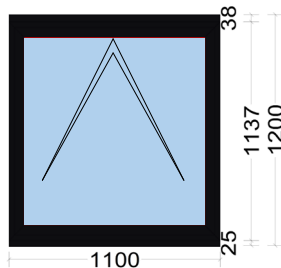
Glazing:

3 x 2x4mm 4MM CLR TGH / 4MM CLR TGH U_g=1.0 W/(m²K)

4MM CLR TGH EXT / 4MM CLR TGH INT

BLACK SPACER, ARGON, PLAN TOT +

W14



Window Element 1100 mm x1200 mm, Consisting of a Top Hung Window.

Uw value: 1.8 W/(m²K)

Colours:

RAL 9005CM (Jet black)

Profiles:

Frame: 3831 41mm/21mm SLIM OUTER FRAME HI (NON FLUSH FRAME)

Window Vent: 3821 50mm/13mm SLIM SASH HI

Add-On Profiles: 3837 180mm SUB CILL , 3849 38mm ADD-ON FOR 70mm PROFILES HI

Window Hardware:

1 x CASEMENT 004

Handle: Handle 373812 (Gear Right), Silver

Stay: Stay up to 50 kg

Additional Locking: With 2 Pieces Additional

Guide: With

Glazing:

1 x 2x4mm 4MM CLR TGH / 4MM CLR TGH U_g=1.0 W/(m²K)

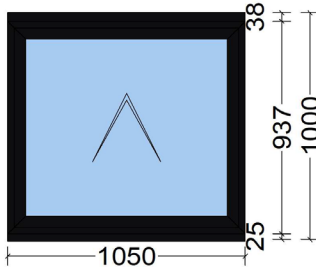
4MM CLR TGH EXT / 4MM CLR TGH INT

BLACK SPACER, ARGON, PLAN TOT +

Position	Quantity	Description
----------	----------	-------------

W15	1 Pcs	Window Element
-----	-------	----------------

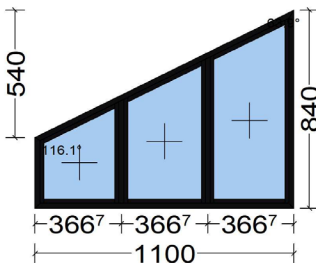
Exterior View



Window Element 1050 mm x 1000 mm, Consisting of a Top Hung Window.
 Uw value: 1.7 W/(m²K)
 Colours:
 RAL 9005CM (Jet black)
 Profiles:
 Frame: 3883 55mm/24mm LARGE OUTER FRAME HI (FLUSH FRAME)
 Window Vent: 3821 50mm/13mm SLIM SASH HI
 Add-On Profiles: 3837 180mm SUB CILL , 3895 38mm ADD-ON FOR FLUSH OUTER FRAME
 Window Hardware:
 1 x CASEMENT 004
 Handle: Handle 373812 (Gear Right), Silver
 Stay: Stay up to 50 kg
 Additional Locking: With 2 Pieces Additional
 Guide: With
 Glazing:
 1 x 2x4mm 4MM CLR TGH / 4MM CLR TGH U_g=1.0 W/(m²K)
 4MM CLR TGH EXT / 4MM CLR TGH INT
 BLACK SPACER, ARGON, PLAN TOT +
 1 x T/VENT MRK 2 5000

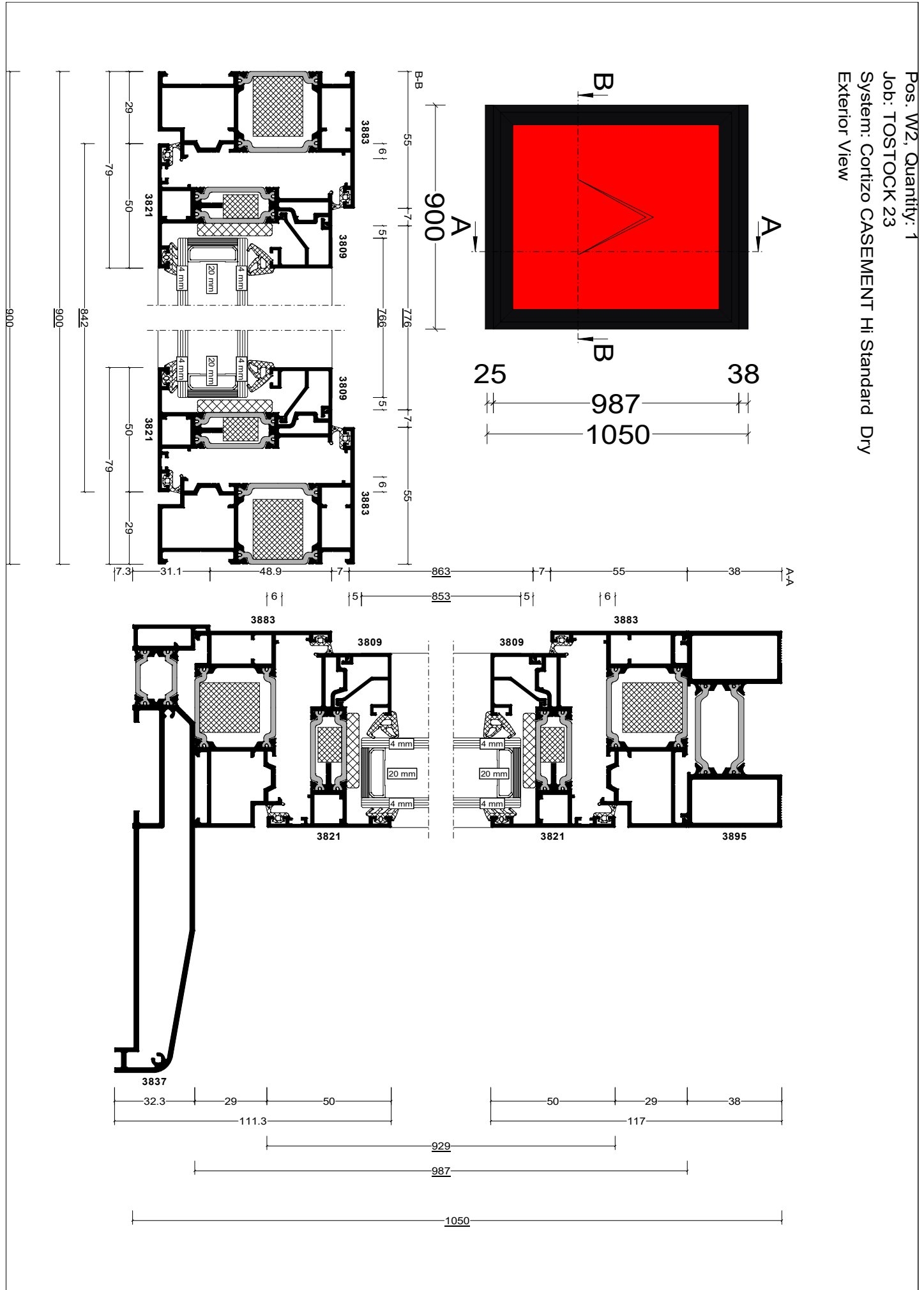
W16	1 Pcs	Window Element
-----	-------	----------------

Exterior View

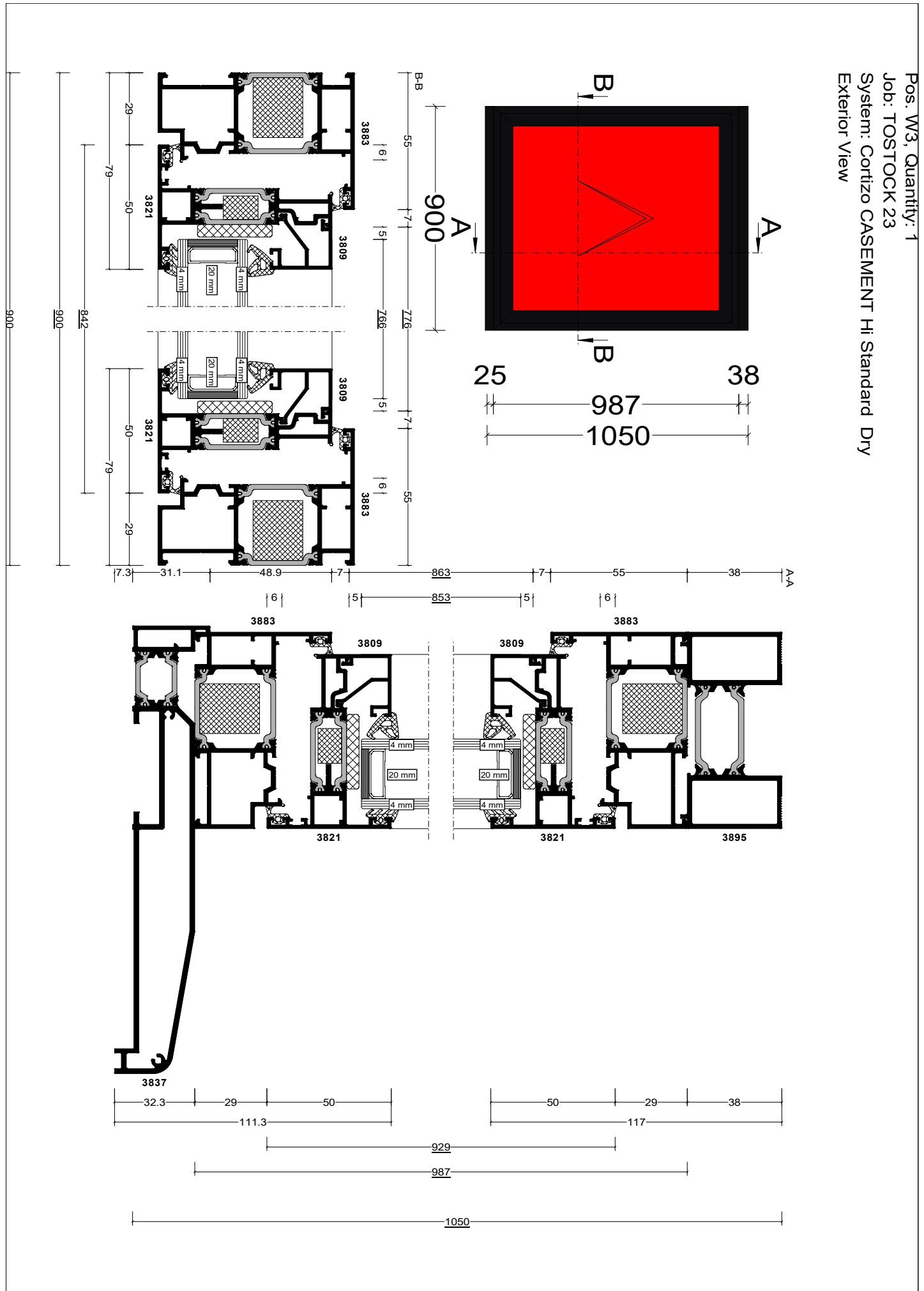


Window Element 1100 mm x 840 mm, Consisting of three Fixed Fields.
 Uw value: 1.5 W/(m²K)
 Colours:
 RAL 9005CM (Jet black)
 Profiles:
 Frame: 3831 41mm/21mm SLIM OUTER FRAME HI (NON FLUSH FRAME)
 Mullion/Transom: 3851 60mm/20mm STANDARD TRANSOM HI (NON FLUSH TRANSOM)
 Glazing:
 3 x 4+20+4mm SHAPED 4MM CLR TGH / 4MM CLR TGH U_g=1.0 W/(m²K)
 SHAPED 4MM CLR TGH EXT / 4MM CLR TGH INT
 BLACK SPACER, ARGON, PLAN TOT +

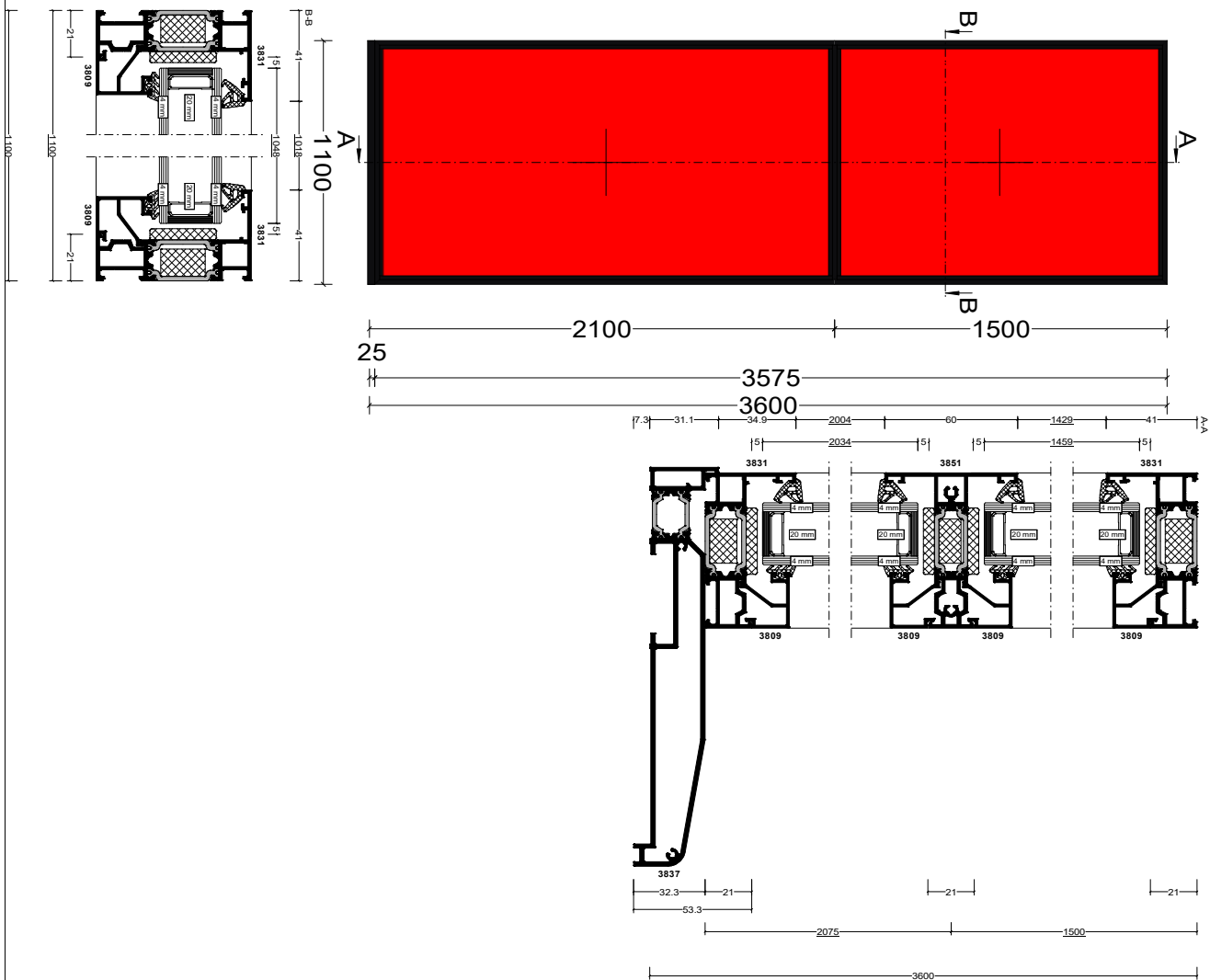
Pos: W2, Quantity: 1
 Job: TOSTOCK 23
 System: Cortizo CASEMENT HI Standard Dry
 Exterior View



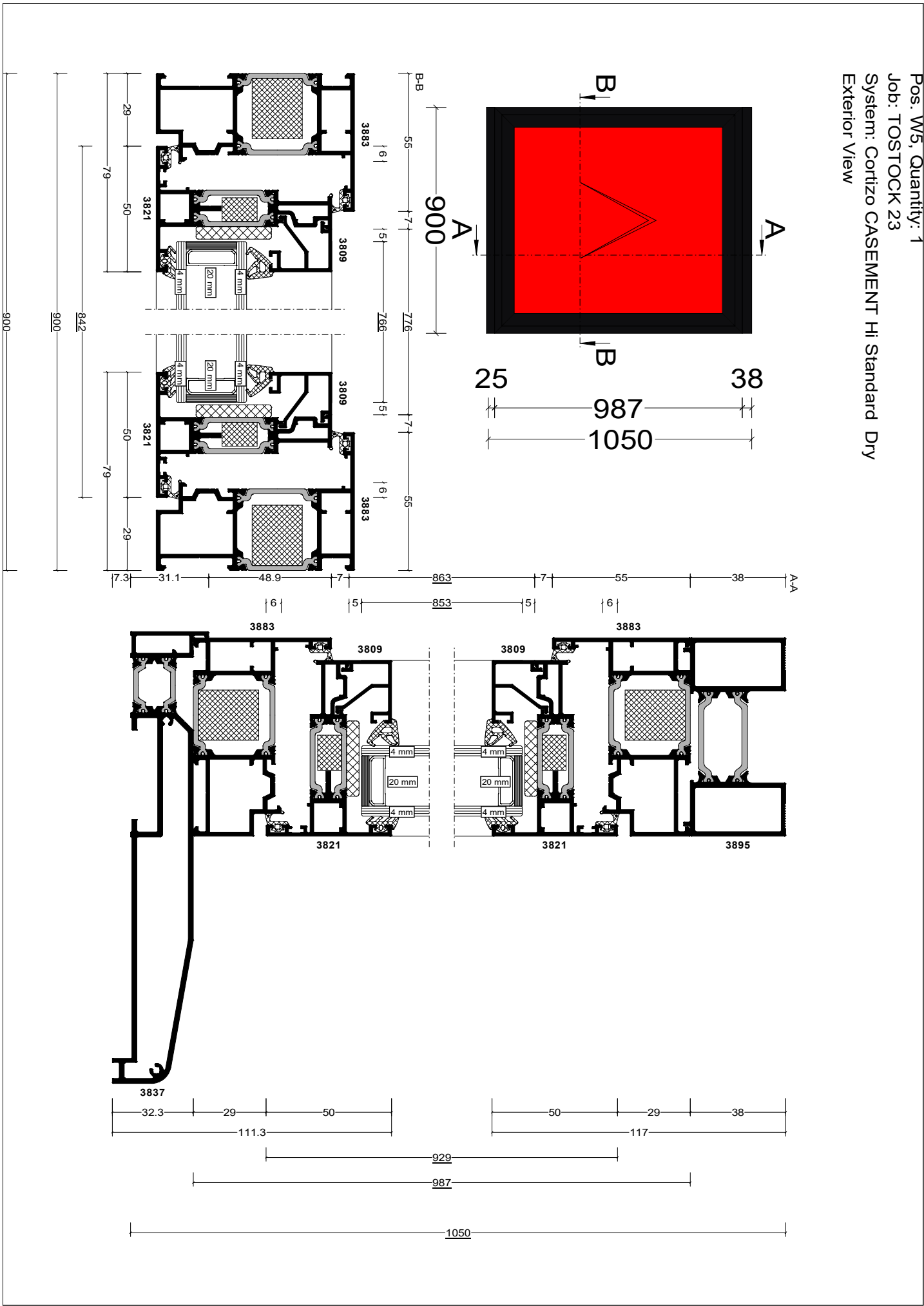
Pos: W3, Quantity: 1
 Job: TOSTOCK 23
 System: Cortizo CASEMENT HI Standard Dry
 Exterior View



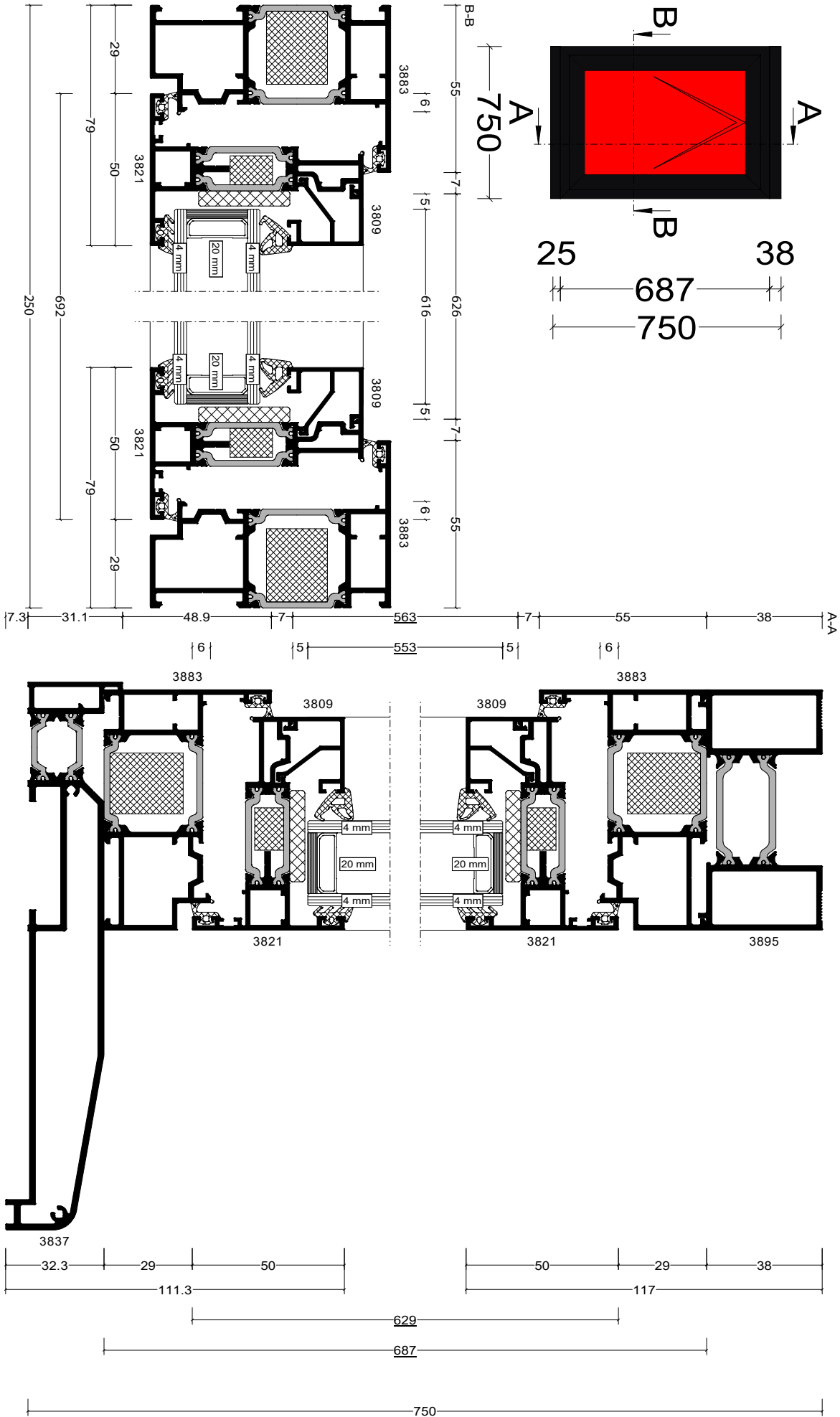
Pos. W4, Quantity: 1
 Job: TOSTOCK 23
 System: Cortizo CASEMENT HI Standard Dry
 Exterior View



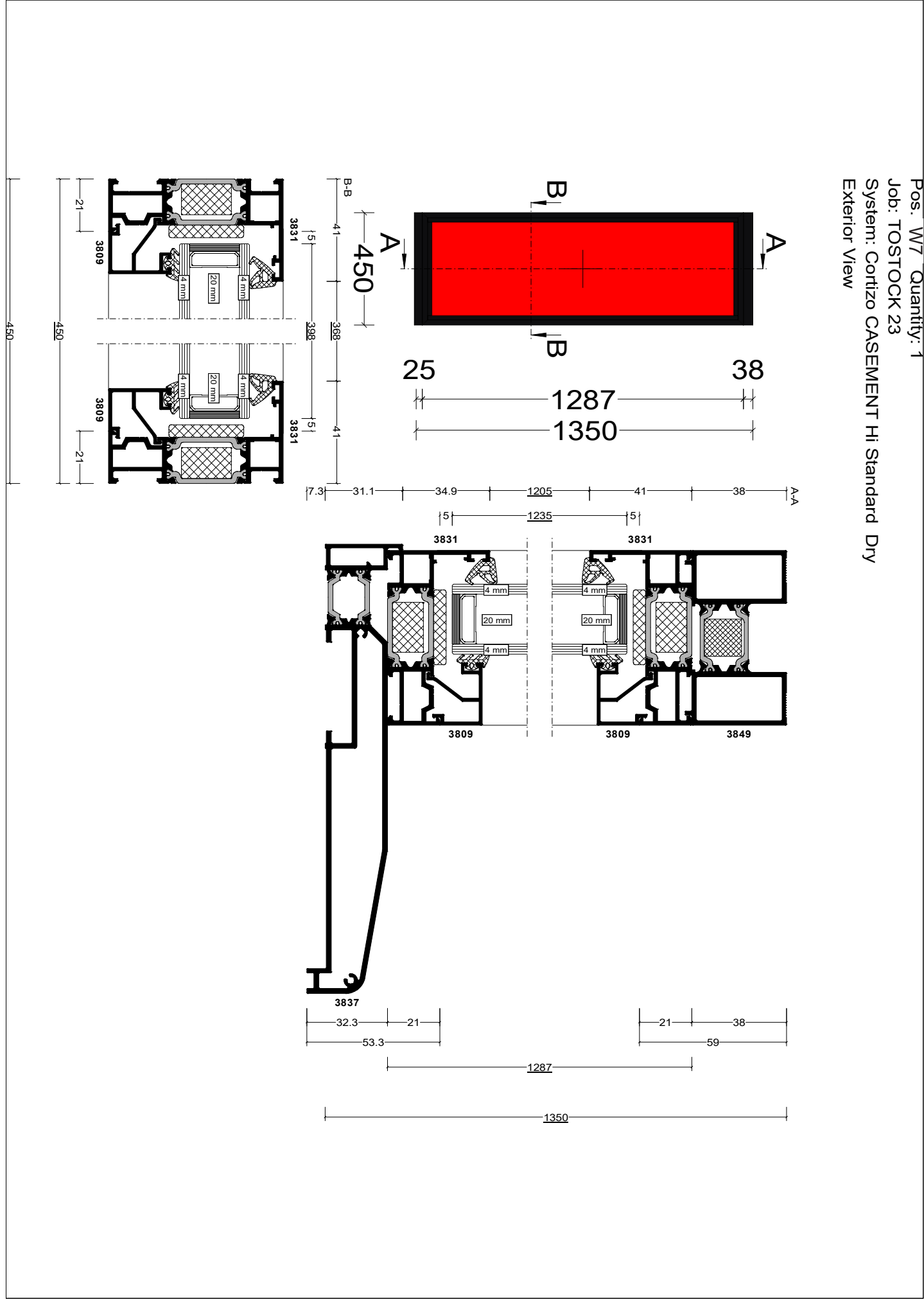
Pos. W5, Quantity: 1
 Job: TOSTOCK 23
 System: Cortizo CASEMENT HI Standard Dry
 Exterior View



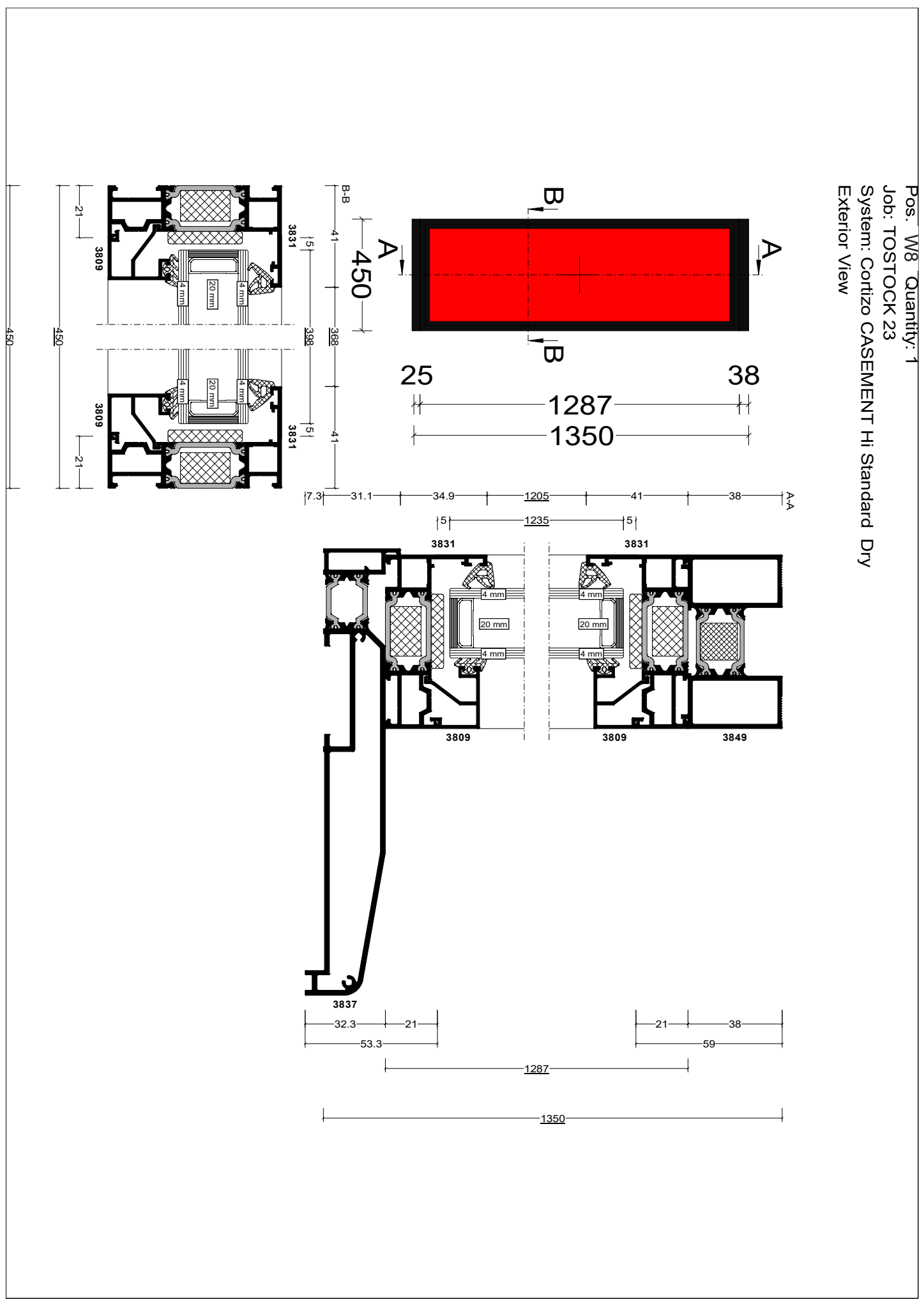
Pos. W6 , Quantity: 1
 Job: TOSTOCK 23
 System: Cortizo CASEMENT HI Standard Dry
 Exterior View



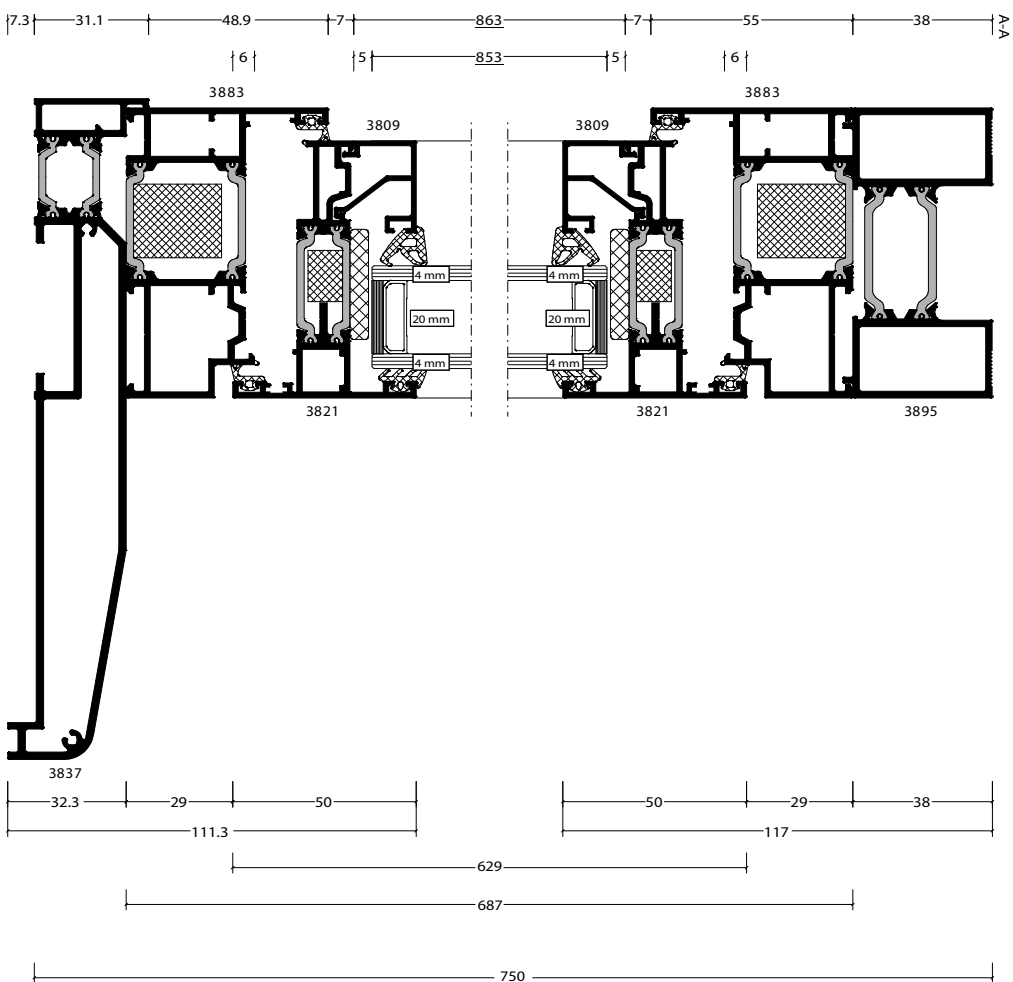
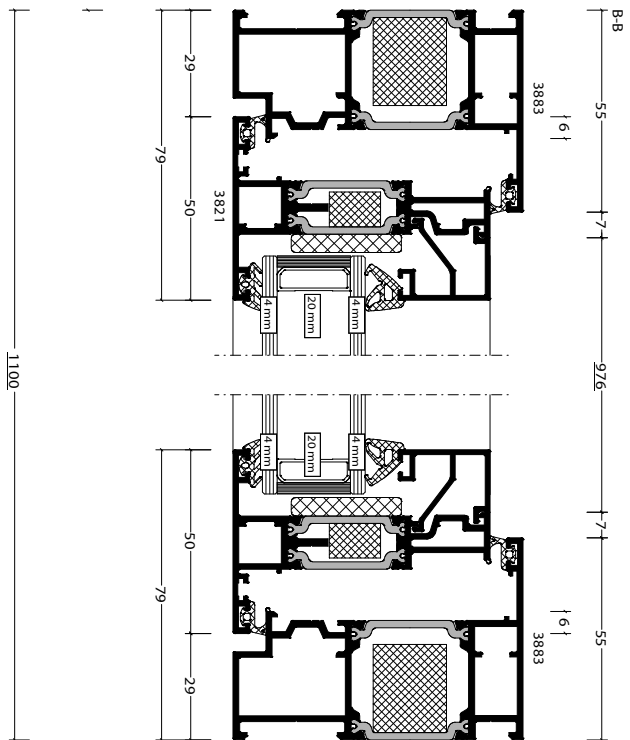
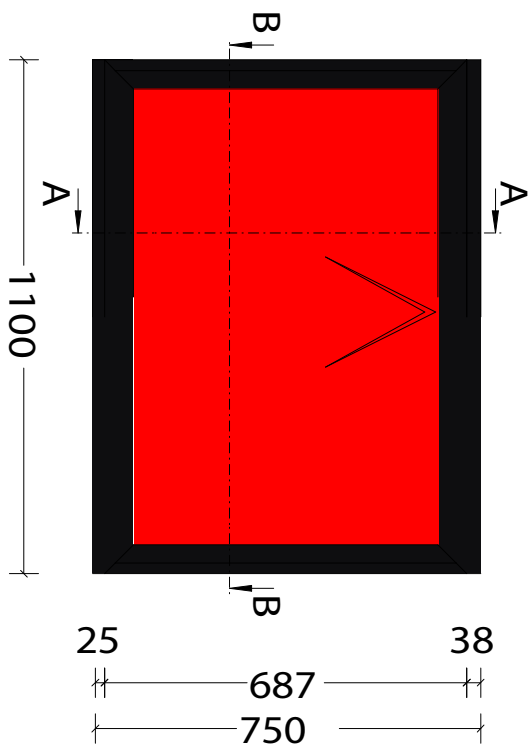
Pos. W7 Quantity: 1
 Job: TOSTOCK 23
 System: Cortizo CASEMENT HI Standard Dry
 Exterior View



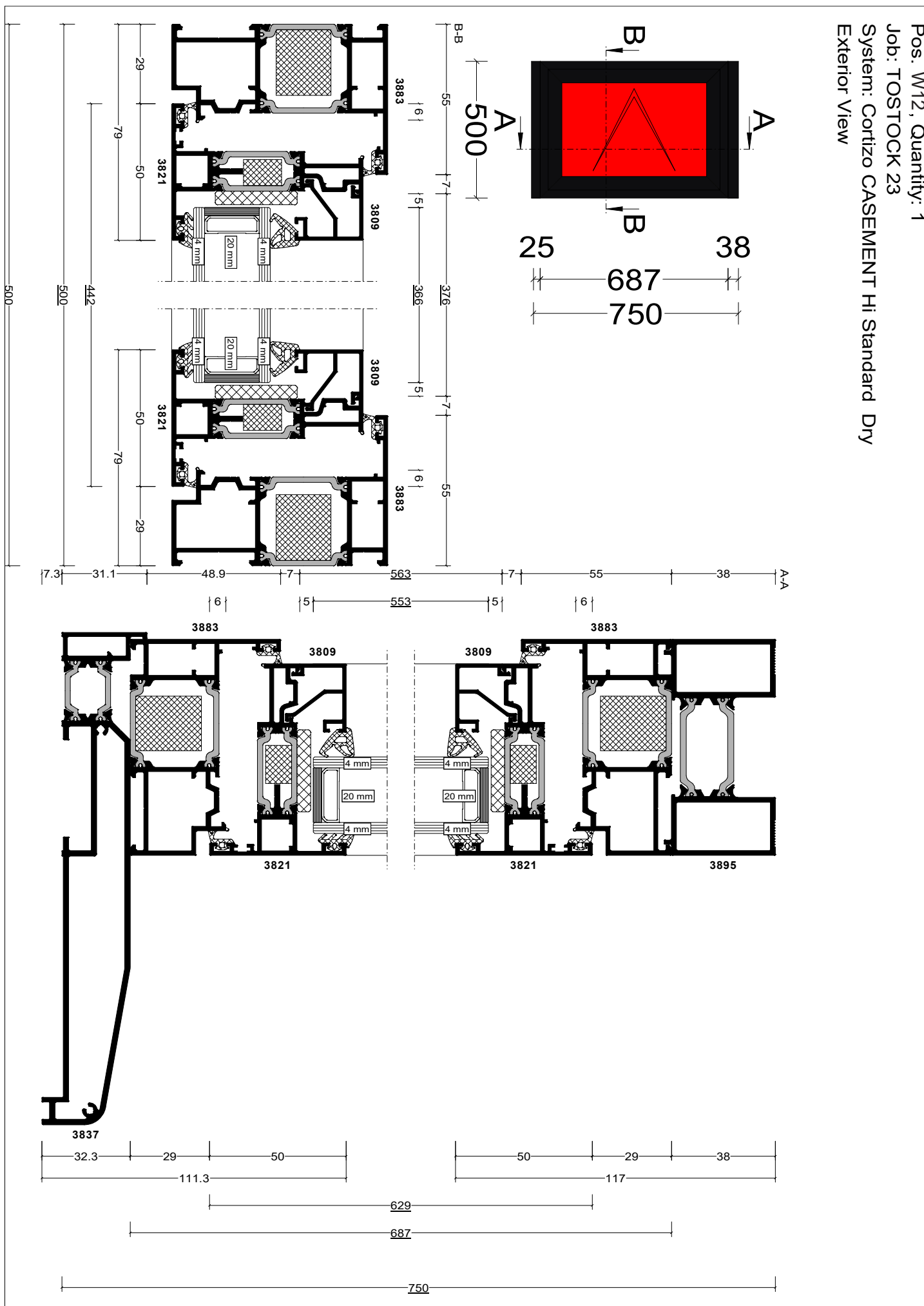
Pos. W8 Quantity: 1
 Job: TOSTOCK 23
 System: Cortizo CASEMENT HI Standard Dry
 Exterior View



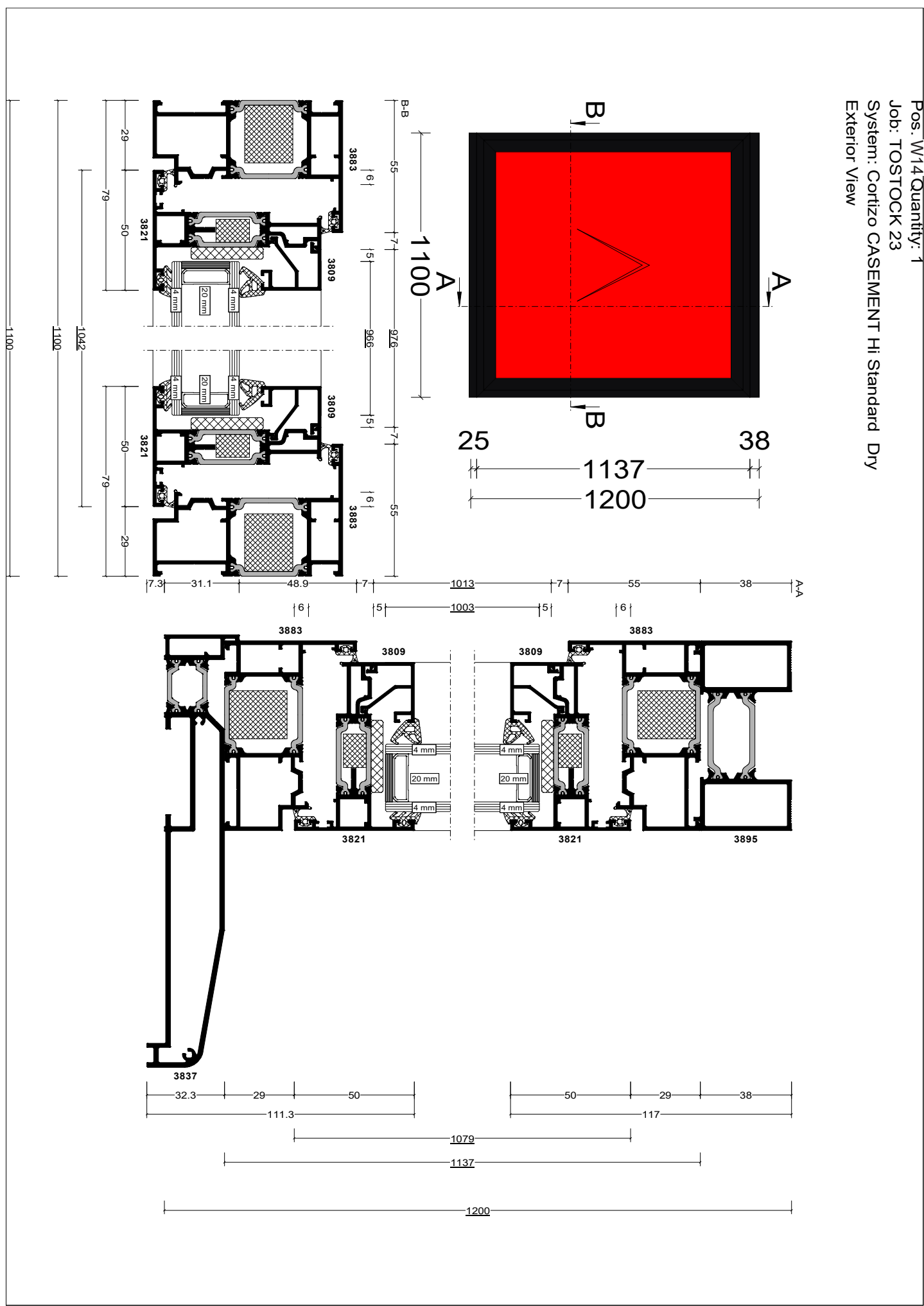
Pos. W11 Quantity: 1
 Job: TOSTOCK 23
 System: Cortizo CASEMENT Hi Standard Dry
 Exterior View



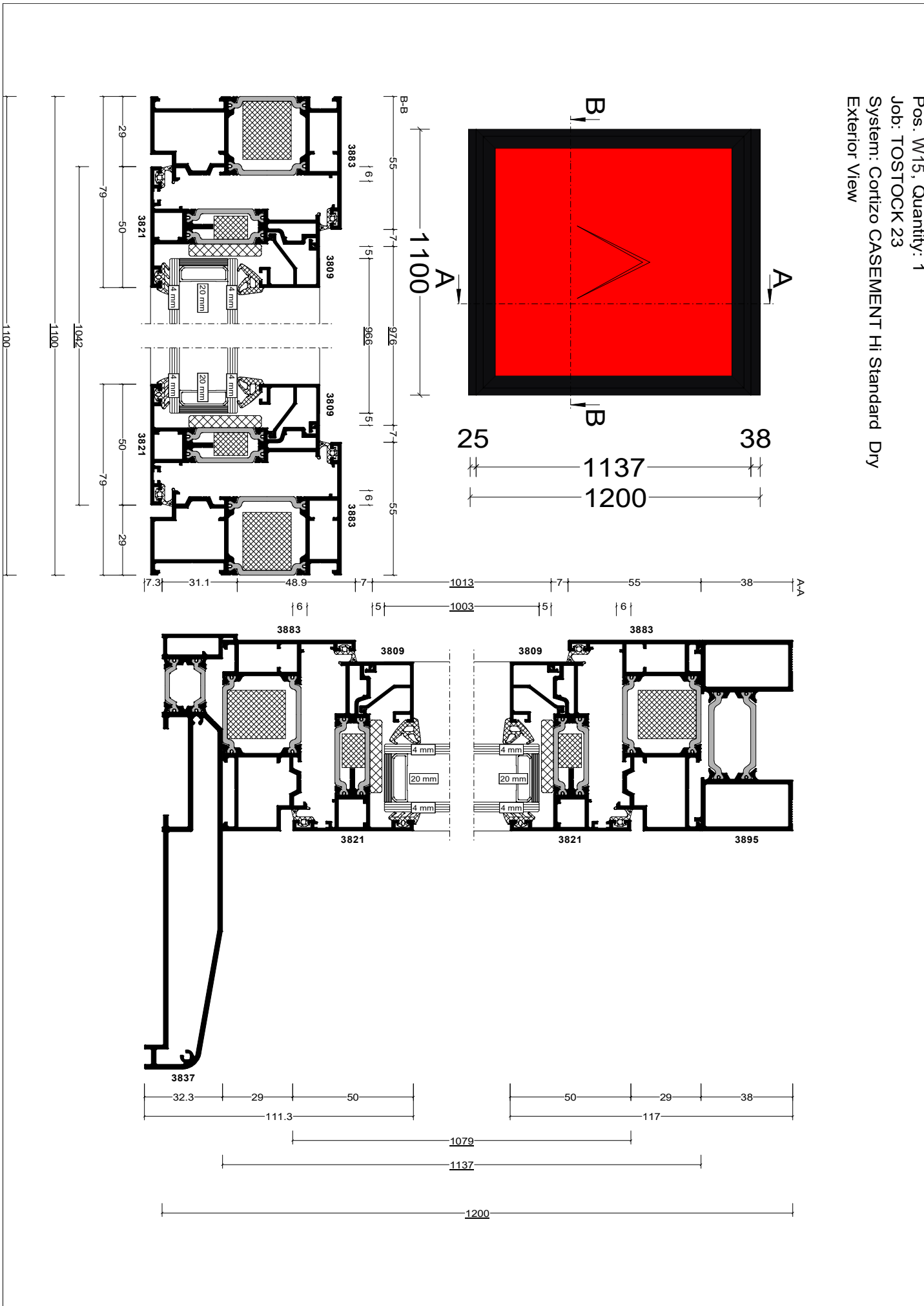
Pos. W12, Quantity: 1
 Job: TOSTOCK 23
 System: Cortizo CASEMENT HI Standard Dry
 Exterior View



Pos. W14 Quantity: 1
 Job: TOSTOCK 23
 System: Cortizo CASEMENT Hi Standard Dry
 Exterior View



Pos: W15, Quantity: 1
 Job: TOSTOCK 23
 System: Cortizo CASEMENT Hi Standard Dry
 Exterior View



BIBLIOGRAPHY

Buckle et al (2000). *Tostock Past and Present*. St Edmundsbury Press, Bury St Edmunds

Nicolaas Joubert (2020) *Heritage Assessment and Impact Statement*

Velux Heritage conservation roof windows: <https://www.velux.co.uk/products/roof-windows/conservation-roof-windows/heritage-conservation-roof-windows>

Schiedel Eco ICID twin-wall flue system: <https://www.schiedel.com/uk/products/steel-system-chimneys/acid/>