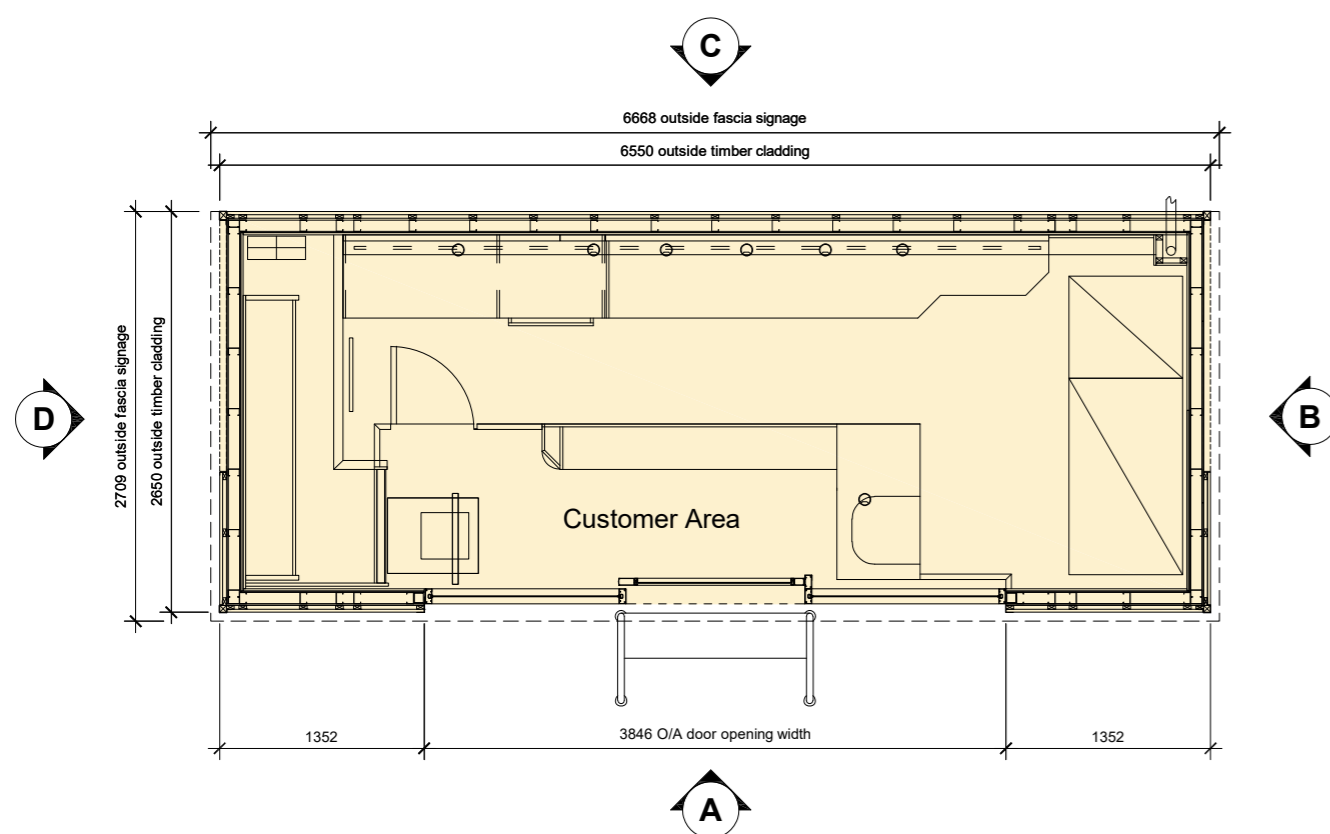


REFER TO SK-A-9121 FOR SIGNAGE INFORMATION

NOTES:

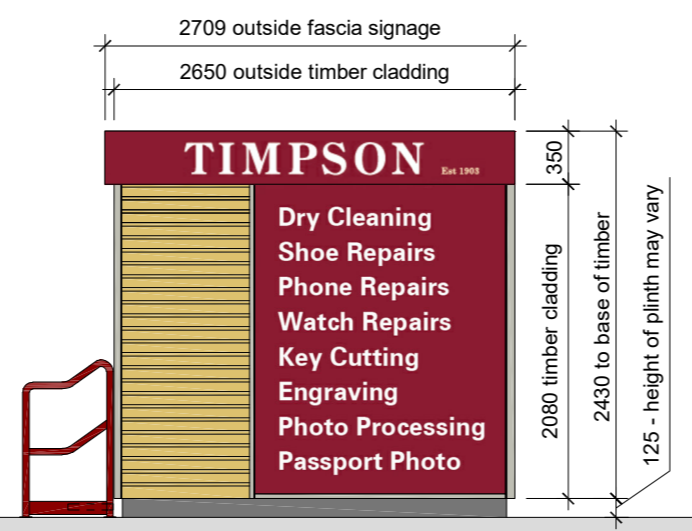
PROPOSED AREAS	sq ft	sq m
Gross Internal Area	156 sq ft	15 sq m
Gross External Area	185 sq ft	17 sq m



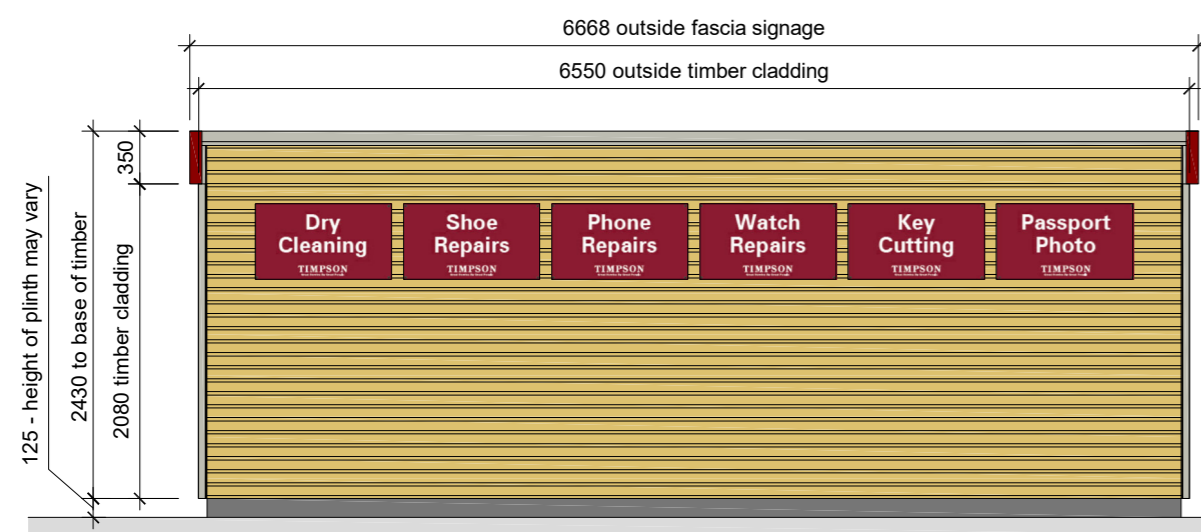
PLAN



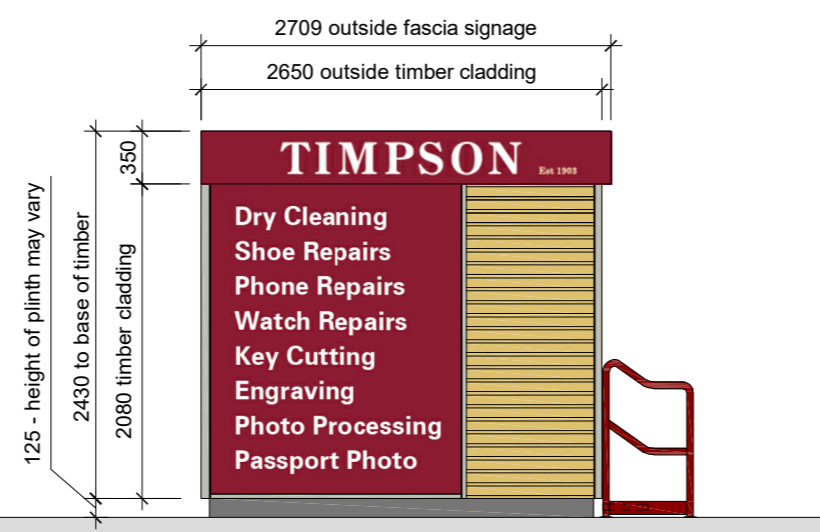
ELEVATION A



ELEVATION B



ELEVATION C



ELEVATION D

**Roof**  
Protan roofing membrane. Colour: Light Grey RAL 7040

**External finish**  
Larch timber cladding.

**External Door/Screens**  
Aluminium glazed door and glazed side screens.  
Polyester powder coated finish - Colour: Light Grey RAL 7044.

**Fascia**  
2mm thick fabricated aluminium panel.  
Colour: Burgundy RAL 3004.  
With aluminium light box / back tray for internal illumination.

**Handrail**  
Tubular handrail with steps, as required, to suit site levels.  
Colour: Burgundy RAL 3004 to match fascia.

**Signage**  
2mm thick fabricated aluminium panel, with vinyl graphics applied.

REVISION: 1 BY: RHM CHECKED: DATE: 28/07/2022  
Initial issue

STATUS

**A3 | PLANNING**

CLIENT

**Sainsbury's**

PROJECT

**TIMPSON POD CONCESSIONS**

TITLE

**TIMPSON POD  
6550mm x 2650mm  
with rear signage**

**Hadfield Cawkwell Davidson**

Broomgrove Lodge, 13 Broomgrove Rd, Sheffield, S10 2LZ T 0114 266 8181 www.hcd.co.uk

HCD PROJECT NO. 2021-249 SCALE 1:50 @ A2 REV. 1

ASSET\_ID PROGRAMME CODE ORIGINATOR DIVISION LEVEL TYPE - ROLE - NUMBER  
AS-XXXX\_2002 HCD Z05 ZZ SK-A-9111

