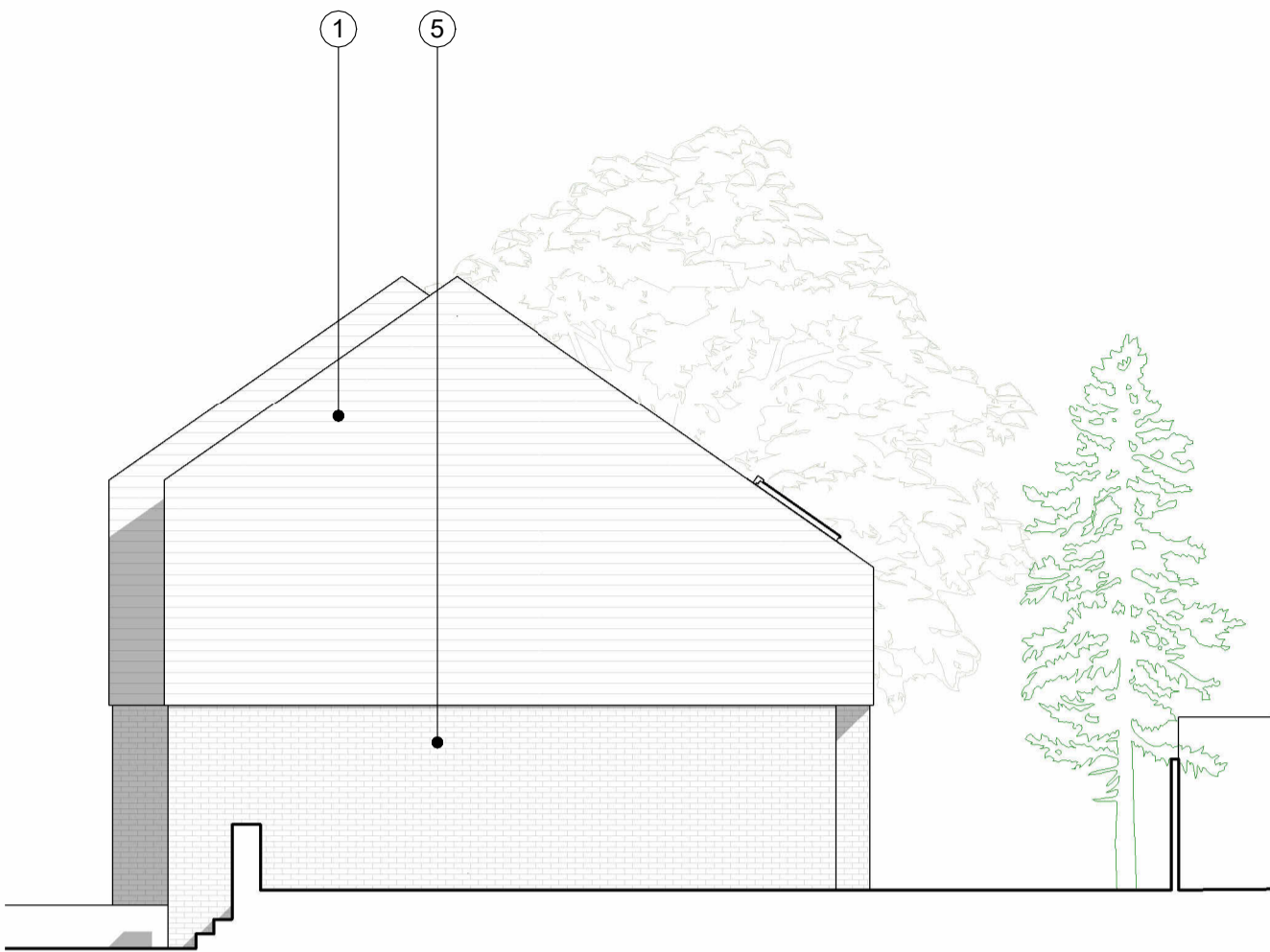
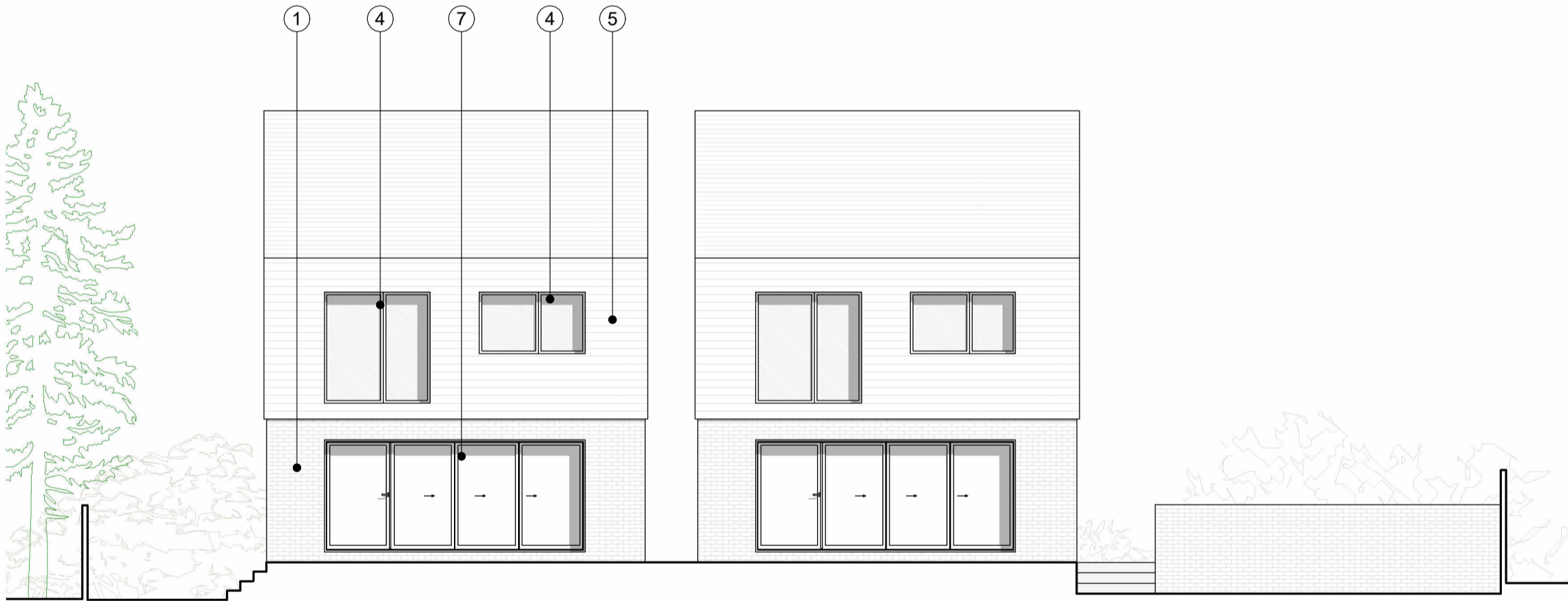


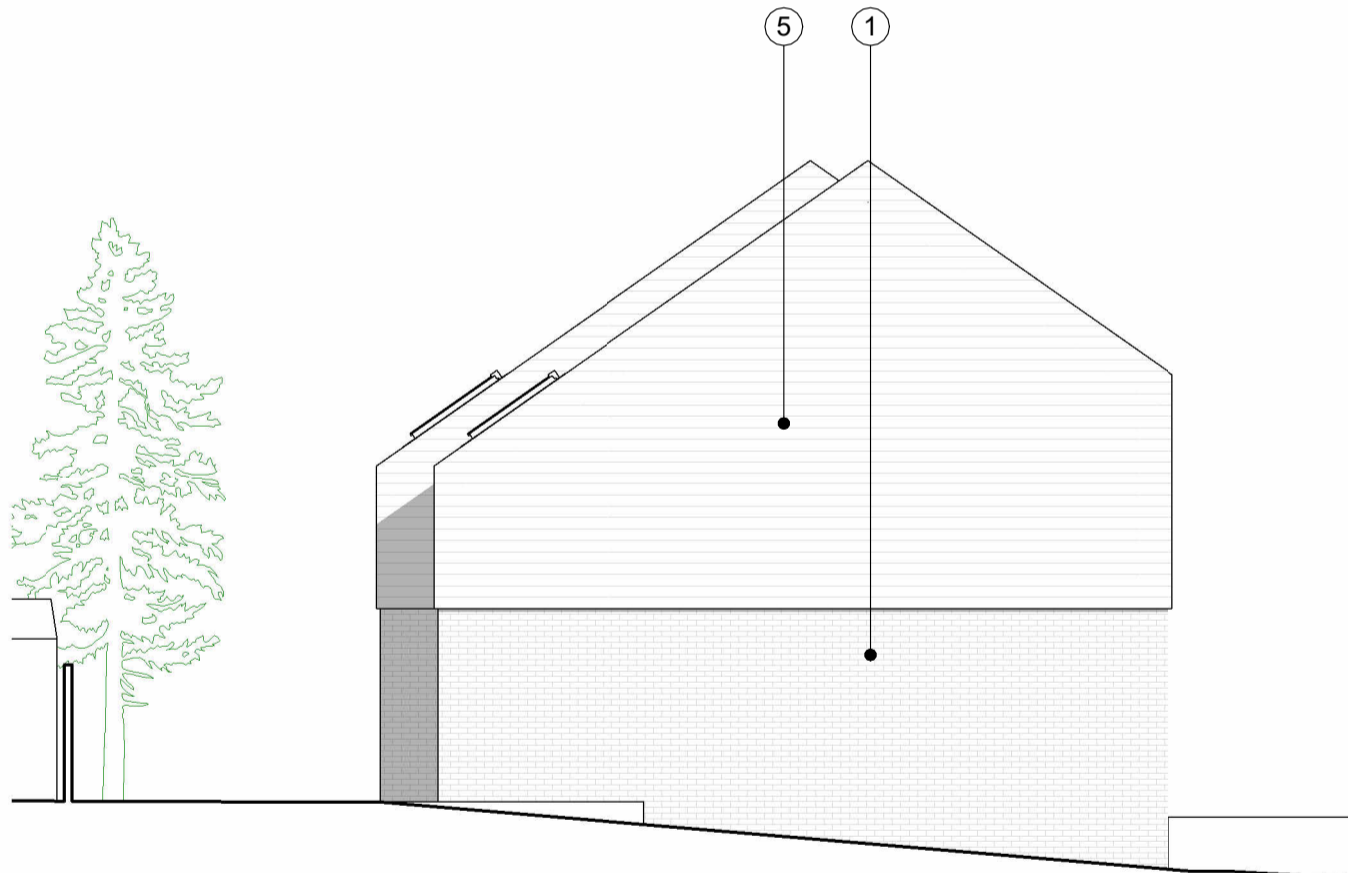
House B & C- Front Elevation  
1 : 100



House B - Side Elevation  
1 : 100



House B & C- Rear Elevation  
1 : 100



House C - Side (West) Elevation1  
1 : 100

- MATERIALS**
- 1 - Facing brickwork
  - 2 - Composite front door
  - 3 - Stone surrounds and cills
  - 4 - Aluminium windows
  - 5 - Clay tiles
  - 6 - Stone cills
  - 7 - Aluminium bi-fold doors
  - 8 - Velux rooflight

Rev	Date	Drawn	Description
A	01.12.2023	MS	Planning Submission

Note:  
Do Not Scale from Drawings- except for Local Authority Planning purposes only. These drawings are not intended for construction.

Copyright © Scott Sampson Architects Ltd. This drawing is the property of Scott Sampson Architects Ltd and is the subject of Intellectual Property Rights including copyright, patents, trade marks, design rights, protection from passing off, and the protection of confidential information and hence shall not be reproduced, copied, loaned or submitted to any other party without the written consent of Scott Sampson Architects Ltd.

