



Proposed Materials Schedule

13/11/2023

H-23-89

Prince of Wales Carehome,
Shirley

72 Bedroom, 3 storey Carehome
with Basement Level

CONTENTS

Facing Brickwork, Soldier Course & Corbelling	3
Plinth Brickwork	4
Pitched Roof.....	5
Flat Roof.....	6
Guttering.....	7
Rain water pipes.....	8
Windows	9
Doors.....	Error! Bookmark not defined.
Ground Floor Window Details.....	10
Balconies	10

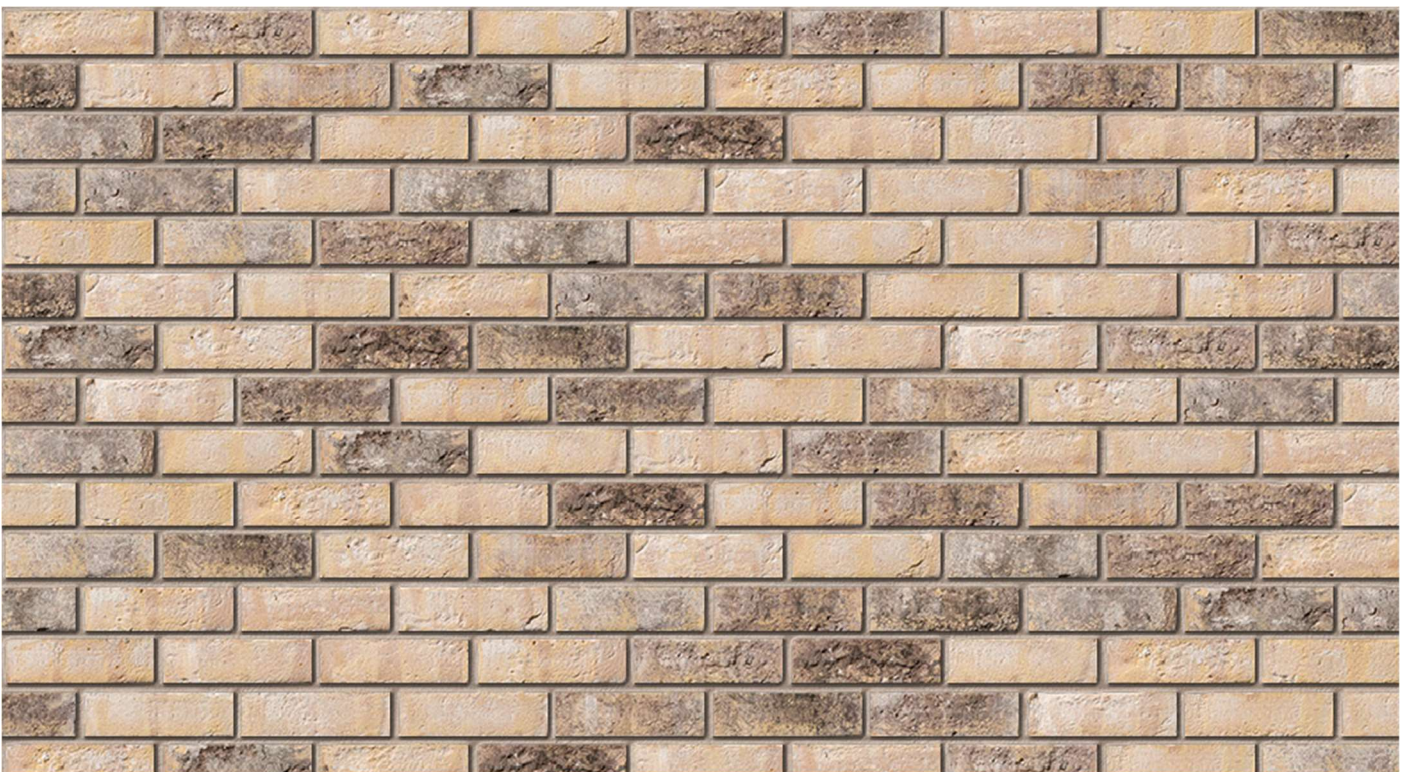
Facing Brickwork, Soldier course and Corbelling

Proposed Supplier: Ibstock

Product Range: Eclipse

Product Name: New Ivanhoe Cream

Product reference: A0805A



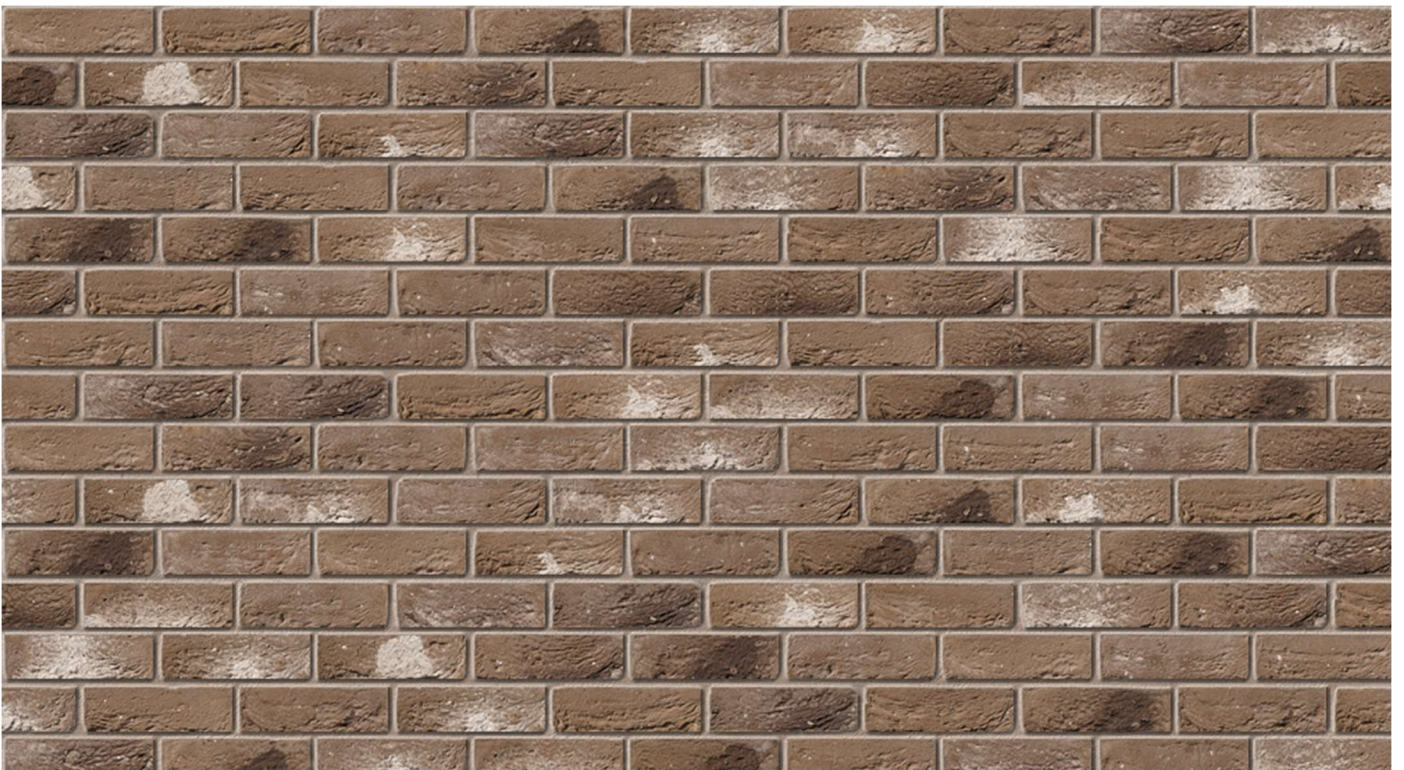
Plinth Brickwork

Proposed Supplier: Ibstock

Product Range: Leicester

Product Name: Tenebris

Product reference: A0079A



Pitched Roof

Proposed Supplier: Marley

Product Range: Lincoln Clay Profile Pantile

Product Name: Rustic Red

Product reference: TBC



Flat Roof

Proposed Supplier: Sika

Product Range: Sarnafil

Product Name: lead grey (Sika colour no. 9500)

Product reference: G 410-15 EL



Guttering

Proposed Supplier: TBC

Product Name: TBC

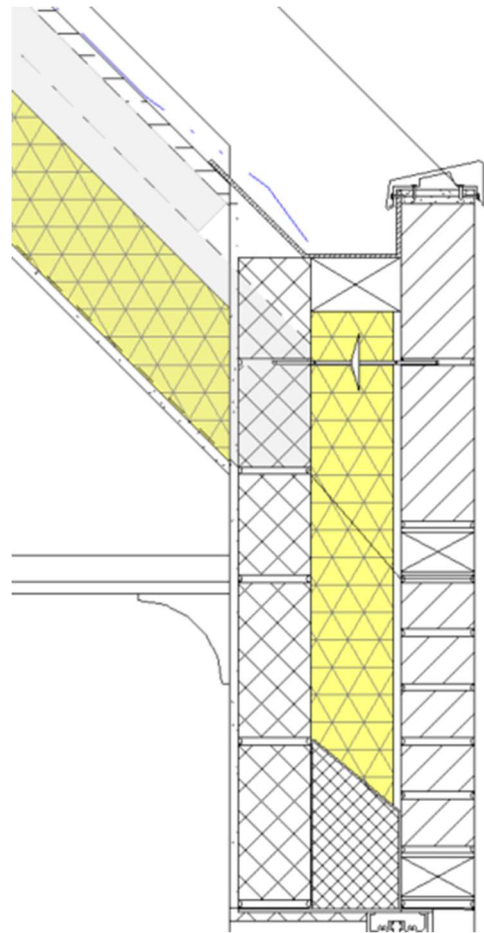
Product Colour: N/A

Product Range: TBC

Description: Concealed Boundary Gutter and 2x Soldier course.



Exterior view of Gutter
(+extra soldier course)



Proposed Detail

Rain water pipes

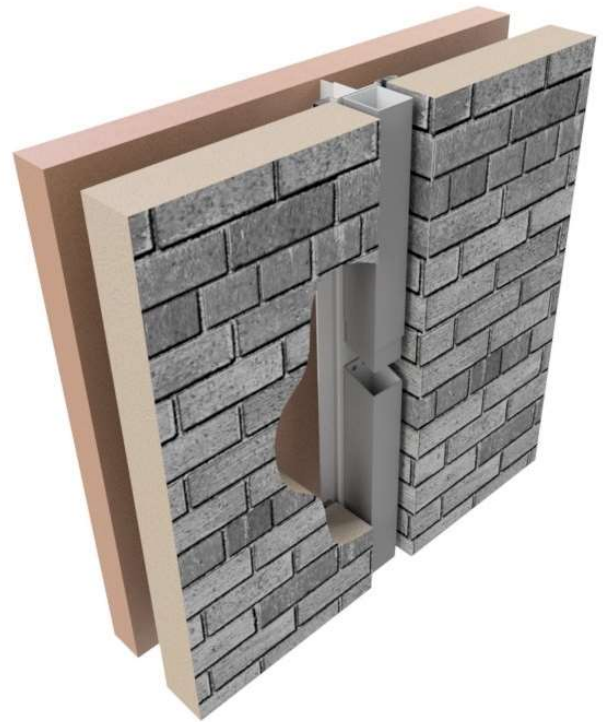
Proposed Supplier: TBC

Product Range: TBC

Product Name: TBC

Product Colour: Brown

Description: Concealed Rainwater pipe inset into brickwork.



Windows and Doors

Proposed Supplier: Sutton by Design Ltd

Product Name: Foil Wrapped U-PVC Windows

Product Colour: Bronze Foil

Product Range: TBC



Proposed Window Style



Proposed Colour - Bronze

Ground Floor Window Details

Description: Decorative Chamfered Brickwork window head using a reduced Catnic lintel and brick slips.



Balconies and Balustrades

Proposed Supplier: AliDeck

Product Name: AliDeck Balcony with vertical infill balustrade.

Product Colour: Powder-Coated Bronze

Product Range: TBC

