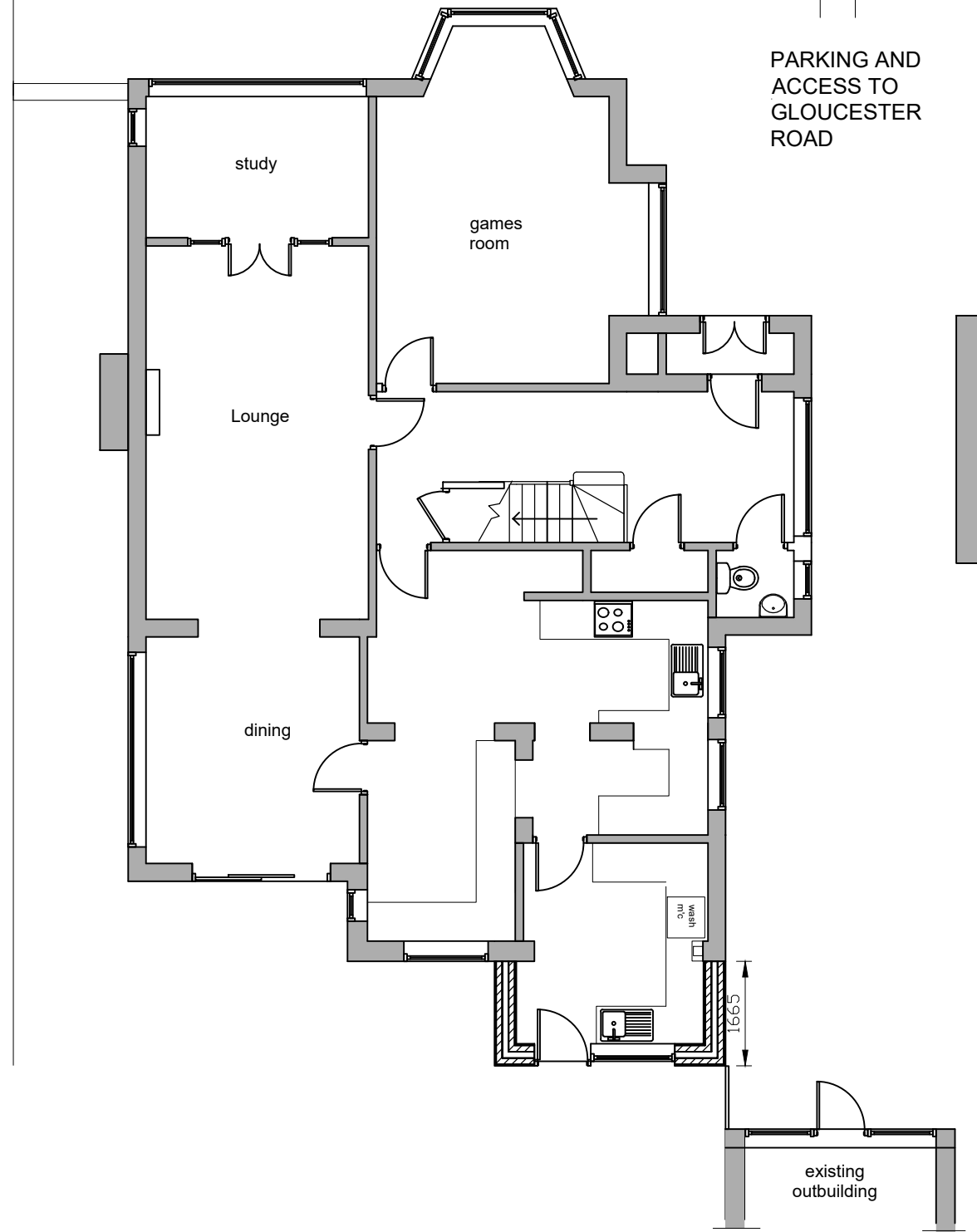
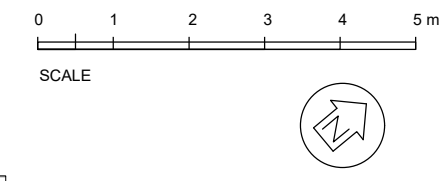
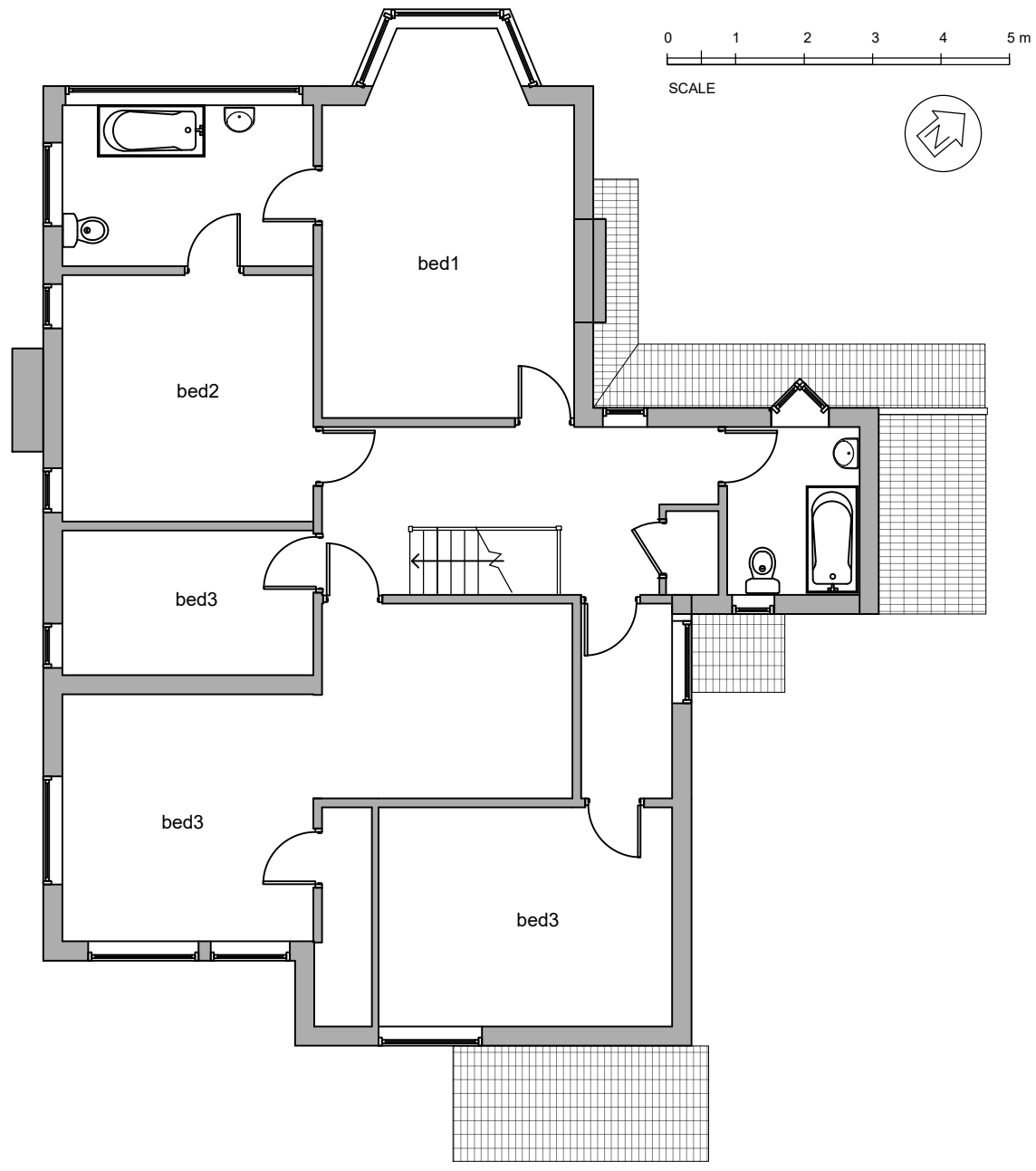


Ground Floor



PARKING AND
ACCESS TO
GLOUCESTER
ROAD

First Floor



t :0117 2591059
m:0789 0179546
e :julian@jfl-planning.com

Location: No.46 Gloucester Road
Almondsbury Bristol BS32 4HA
Issue: Planning Date: 27.11.2023
Drawn by: JL Scale:1: 100@A3
Dwg No: 004 Proposed Plans
Revisions:
www.jfl-planning.com