

**Plant Schedule**

Trees	Species Name	Grth	Height	Density	Specification	No.
	Carpinus betulus	12-14cm	100-125cm	4Cr Double Staggered at 0.4m offset	Feather 1/3 brks 2x B	88
	Acer spicatum	12-14cm	350-425cm	Counted	Heavy Standard Clear Stem min 200 3/5 brks 3x RB2	1
	Pyrus communis	12-14cm	350-425cm	Counted	Heavy Standard Clear Stem min 200 3/5 brks 3x RB2	1
	Acer campestre	12-14cm	350-425cm	Counted	Heavy Standard Clear Stem min 200 3/5 brks 3x RB2	1
	Sorbus torminalis	12-14cm	350-425cm	Counted	Heavy Standard Clear Stem min 200 3/5 brks 3x RB2	1
	Malus sylvestris	12-14cm	350-425cm	Counted	Heavy Standard Clear Stem min 200 3/5 brks 3x RB2	1
	Malus 'Evereste'	12-14cm	350-425cm	Counted	Heavy Standard Clear Stem min 200 3/5 brks 3x RB2	1
	Sorbus vilmarinii	12-14cm	350-425cm	Counted	Heavy Standard Clear Stem min 200 3/5 brks 3x RB2	1
	Acer campestre 'Elsrijk'	12-14cm	350-425cm	Counted	Heavy Standard Clear Stem min 200 3/5 brks 3x RB2	1
	Prunus padockii	12-14cm	350-425cm	Counted	Heavy Standard Clear Stem min 200 3/5 brks 3x RB2	1
	Malus 'Golden Hornet'	12-14cm	350-425cm	Counted	Heavy Standard Clear Stem min 200 3/5 brks 3x RB2	1
	Malus 'John Downie'	12-14cm	350-425cm	Counted	Heavy Standard Clear Stem min 200 3/5 brks 3x RB2	1

**Shrubs**

Species Name	Height	Pot Size	Specification	Density	No.
Amelanchier lamarckii	80-100cm	10L	Branched 3/5 brks C	Counted	1
Cornus alba 'Siberica Variegata'	60-80cm	10L	Branched 3 brks C	Counted	6
Corylus avellana	60-80cm	10L	Branched 3 brks BR	0.4Cr Double Staggered at 0.4m offset	88
Elaeagnus pungens 'Maculata'	40-60cm	5-7.5L	Bushy 3/5 brks C	3/m²	5
Escallonia 'Peach Blossom'	80-100cm	10L	Bushy 3/5 brks C	0.4Cr	172
Euonymus europaeus	60-80cm	10L	1+2 Branched 5 brks BR	0.4Cr Double Staggered at 0.4m offset	88
Euonymus fortunei 'Emerald Gaiety'	30-40cm	5-7.5L	Bushy 3/5 brks C	4/m²	157
Hebe 'Midsummer Beauty'	40-60cm	10L	Bushy C	4/m²	11
Hebe franciscana 'Blue Gem'	40-60cm	10L	Bushy C	4/m²	37
Ilex aquifolium	60-80cm	3L	Leader With Lateralis C	0.4Cr Double Staggered at 0.4m offset	88
Lavandula angustifolia 'Alba'	40-60cm	5-7.5L	Bushy 3/5 brks C	4/m²	148
Lavandula angustifolia 'Folgate'	40-60cm	5-7.5L	Bushy 3/5 brks C	4/m²	22
Ligustrum ovalifolium 'Aureum'	80-100cm	10L	Bushy 3/5 brks C	0.4Cr	74
Lonicera pileata 'Moss Green'	40-60cm	5-7.5L	Bushy 3 brks C	3/m²	35
Pittosporum tenuifolium 'Tom Thumb'	40-60cm	5-7.5L	Bushy 5 brks C	3/m²	56
Pittosporum tobira 'Nanum'	40-60cm	5-7.5L	Bushy 3/5 brks C	3/m²	14
Potentilla fruticosa 'Primrose Beauty'	30-40cm	5-7.5L	Bushy 5 brks C	3/m²	10
Pracantha 'Orange Glow'	40-60cm	5-7.5L	Bushy 5 brks C	3/m²	10
Rosa canina	60-80cm	10L	1+1 Branched 3 brks BR	0.4Cr Double Staggered at 0.4m offset	59
Rosa Essex	60-80cm	5-7.5L	Branched 3/4 brks C	4/m²	37
Sambucus nigra	80-100cm	10L	1+1 Branched 3 brks BR	0.4Cr Double Staggered at 0.4m offset	88
Sarcococca hookerana digy. 'Purple Stem'	40-60cm	5-7.5L	Bushy 3/5 brks C	3/m²	148
Viburnum davidii	40-60cm	5-7.5L	Bushy 5 brks C	3/m²	190
Viburnum tinus 'Eve Price'	40-60cm	5-7.5L	Bushy 5 brks C	3/m²	59
Weigela 'Nana Variegata'	40-60cm	10L	Branched 3/5 brks C	4/m²	174

**Climbers**

Species Name	Height	Pot Size	Specification	Density	No.
Lonicera periclymenum	80-100cm	3L	Several Shoots 3/4 brks C	Caned 0.4Cr Double Staggered at 0.4m offset	88

**Herbaceous**

Species Name	Height	Pot Size	Specification	Density	No.
Geranium 'Brookside'	12L	C	15m²	179	-

**Bulbs**

Species Name	Specification	Density	No.
Fritillaria meleagris	10size 4/m²	12	-
Galanthus nivalis	10size 4/m²	20	-
Hyacinthoides non-scripta	10size 4/m²	12	-
Narcissus pseudonarcissus	10size 4/m²	20	-

**Ferns**

Species Name	Height	Pot Size	Specification	Density	No.
Dryopteris erythrosora	12L	Full Pot	6/m²	122	-

**Grasses**

Species Name	Height	Pot Size	Specification	Density	No.
Alopecurus lessoniana	2L	Full Pot	6/m²	121	-
Luzula sylvatica 'Hohe Tatra'	2L	Full Pot	6/m²	87	-
Nassella tenuissima	2L	Full Pot	6/m²	82	-

**Legend**

- Existing trees and hedges to be retained and protected during construction
- Proposed tree planting to receive short double staking with expandable rubber tree ties and irrigation tubing to root system. To be mulched with 75mm of deciduous wood chipping. Refer to tree pit 1
- Proposed tree planting in hard landscape. Refer to tree pit 2
- Proposed specimen shrub planting within shrub beds to receive short angular staking with expandable tree tie and irrigation tubing to root system as required
- Proposed ornamental hedge planting to be planted in a double staggered row 400mm apart in each row with 75mm bark mulch to base, to be maintained at a maximum height of 1.2m
- Proposed native hedge planting to be planted in a double staggered row 400mm apart in each row with 75mm bark mulch to base, to be maintained at a maximum height of 3m. To be planted in Tubex shrub guards
- Proposed shrub planting to receive 75mm bark mulch to base after planting
- Proposed mixed native shrub buffer planting to receive 75mm bark mulch to base after planting. To be planted in a random mix. To be planted in Tubex shrub guards
- Proposed bulb planting in grass. Bulbs to be planted in clumps of 3, 5 or 7 of the same species, in natural drifts.
- Area to be sown with EW1, Woodland Mixture at 5g/ m² in line with good horticultural practices. Available form Emorsgate Seeds or similar, www.wildseed.co.uk
- Area to be sown with EM8, Meadow Mixture for Wetlands, inundation tolerant and suitable for swales and attenuation basins at 4g/ m² in line with good horticultural practices. Available form Emorsgate Seeds or similar, www.wildseed.co.uk

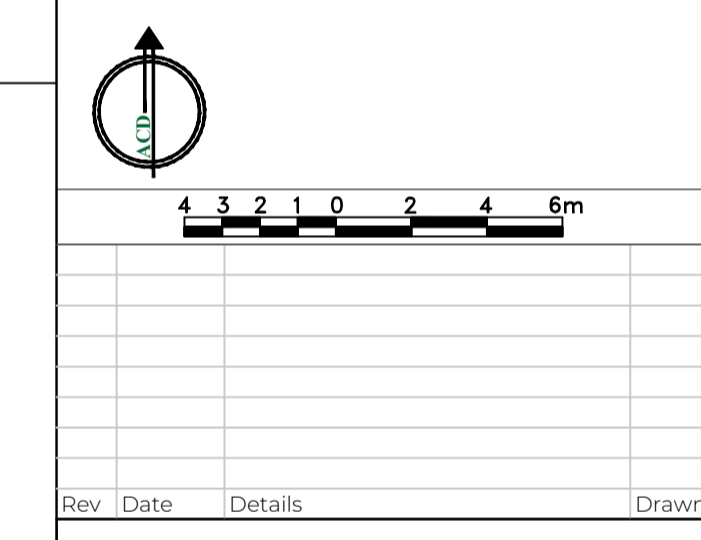
[www.wildseed.co.uk](http://www.wildseed.co.uk)

Area to be laid with good quality general amenity turves, laid in line with good horticultural practices

Area to be sown with general purpose amenity grass seed in line with good horticultural practices and mown as a path through meadow

Cut lines

**SPECIFICATION**  
 All works generally, to comply with the written Soft Landscape Specification.  
 NOTE: DO NOT SCALE FROM DRAWING



**ACD ENVIRONMENTAL**  
 HEAD OFFICE  
 Rodbourne Rail Business Centre, Grange Lane,  
 Malmesbury, SN16 0ES  
 Tel: 01666 825646  
 Courtyard House, Mill Lane, Godalming, GU7 1EY  
 Tel: 01483 425714  
 Suite 6, Crescent House, Yonge Close, Eastleigh, SO50 9SX  
 Tel: 02382 026300  
 9 Brownlow Road, Cambridge, CB4 3NG  
 Tel: 07825 868654  
 Unit 50, Space Business Centre Gloucester, Olympus Park,  
 Quedgeley, Gloucester, GL2 4AL  
 Tel: 07769 263864  
 email: mail@acdenv.co.uk  
 www.acdenvironmental.co.uk

**Bellway**

scheme: Maitland Lodge, Southend Road, Billericay  
 client: Bellway Homes  
 drawing: Soft Landscape Proposals  
 date: Nov' 2023  
 scale: 1:200@A1  
 drawing no: BELL24299-11- Sheet 3  
 drawn: ALK checked: HCS

Copyright of ACD Environmental Ltd. All rights described in Chapter IV of the Copyright, Designs and Patents Act 1988 have been generally asserted. 2011. Copyright of this plan remains with ACD until all fees have been paid in full.