

ALL DIMENSIONS TO BE CHECKED ON SITE.  
COPYRIGHT PROTECTED.

**PLANNING**

I = Information, T = Tender, C = Construction, R = Record

- APPLICATION BOUNDARY
- LOCATION OF PROPOSED SIGNAGE
- LOCATION OF PROPOSED GRAPHICS

REV	DATE	DESCRIPTION	DRAWN	CHKD
3	31.08.23	SHOPFRONT UPDATED FROM CRITICAL STYLE TO STANDARD GLAZING. GRAPHICS TO SIDE WALL UPDATED TO PRINTED DI-BOND METAL PANELS.	CM	FOC
2	03.05.23	UPDATED TO APPROVED CRF CHANGES.	CM	FOC
1	17.03.22	UPDATED TO PLANNING CONSULTANT COMMENTS (RYDEN, AS - 15.03.22)	CM	FOC

**M&S**  
EST. 1884

STORE NAME  
**LINLITHGOW**

COUNTRY  
**SCOTLAND**

PROJECT  
**NEW FOODHALL**

DRAWING  
**LOCATION & SITE PLAN -  
ADVERTISEMENT CONSENT**

CONSULTANT  
**LEWIS AND HICKEY**

DISCIPLINE DESCRIPTION  
**ARCHITECTURE**

CONSULTANT LOGO



18 Farnham Road  
Guildford  
Surrey  
GU1 4XA

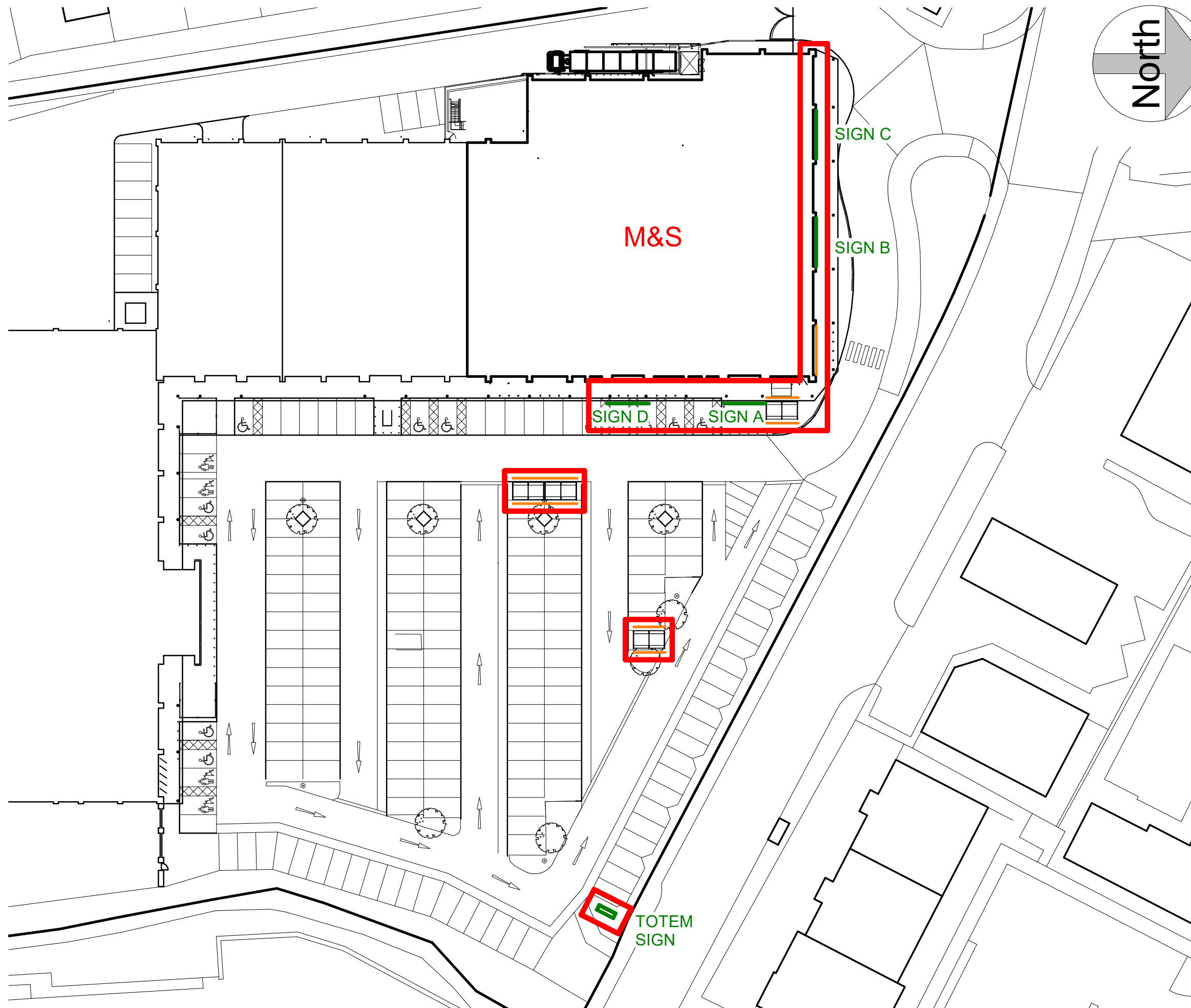
Tel: 01483 560908  
Fax: 01483 560660  
Email: guildford@lewishickey.com

**LEWIS AND HICKEY**

SCALE	PAPER SIZE	DATE	DRAWN	CHECKED
1 : 500	A3	29.11.21	TG	CM
STORE NUMBER	PROJECT No.	DISCIPLINE CODE	DRAWING No.	
Q0000	LIT002	A	410	
CONSULTANT PROJECT No	STATUS		REVISION	
G4661	P		3	

1 BLOCK PLAN  
410 1 : 500

0m 10m 20m 30m 40m 50m  
VISUAL SCALE 1:500 @ A3



ALL DIMENSIONS TO BE CHECKED ON SITE.  
COPYRIGHT PROTECTED.

**PLANNING**

I = Information, T = Tender, C = Construction, R = Record

- APPLICATION BOUNDARY
- LOCATION OF PROPOSED SIGNAGE
- LOCATION OF PROPOSED GRAPHICS

REV	DATE	DESCRIPTION	DRAWN	CHKD
3	31.08.23	SHOPFRONT UPDATED FROM CRITICAL STYLE TO STANDARD GLAZING. GRAPHICS TO SIDE WALL UPDATED TO PRINTED DI-BOND METAL PANELS.	CM	FOC
2	03.05.23	UPDATED TO APPROVED CRF CHANGES.	CM	FOC
1	17.03.22	UPDATED TO PLANNING CONSULTANT COMMENTS (RYDEN, AS - 15.03.22)	CM	FOC

**M&S**  
EST. 1884

STORE NAME  
**LINLITHGOW**

COUNTRY  
**SCOTLAND**

PROJECT  
**NEW FOODHALL**

DRAWING  
**LOCATION & SITE PLAN -  
ADVERTISEMENT CONSENT**

CONSULTANT  
**LEWIS AND HICKEY**

DISCIPLINE DESCRIPTION  
**ARCHITECTURE**

CONSULTANT LOGO

18 Farnham Road  
Guildford  
Surrey  
GU1 4XA

Tel: 01483 560908  
Fax: 01483 560660  
Email: guildford@lewishickey.com

**LEWIS AND HICKEY**

SCALE	PAPER SIZE	DATE	DRAWN	CHECKED
1 : 500	A3	29.11.21	TG	CM
STORE NUMBER	PROJECT No.	DISCIPLINE CODE	DRAWING No.	
Q0000	LIT002	A	410	
CONSULTANT PROJECT No	STATUS		REVISION	
G4661	P		3	

1 BLOCK PLAN  
410 1 : 500

0m 10m 20m 30m 40m 50m  
VISUAL SCALE 1:500 @ A3

NOTES

ALL DIMENSIONS TO BE CHECKED ON SITE. COPYRIGHT PROTECTED.

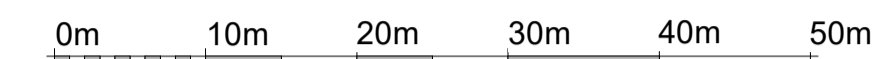
PLANNING



VISUAL SCALE 1:25 @ A1

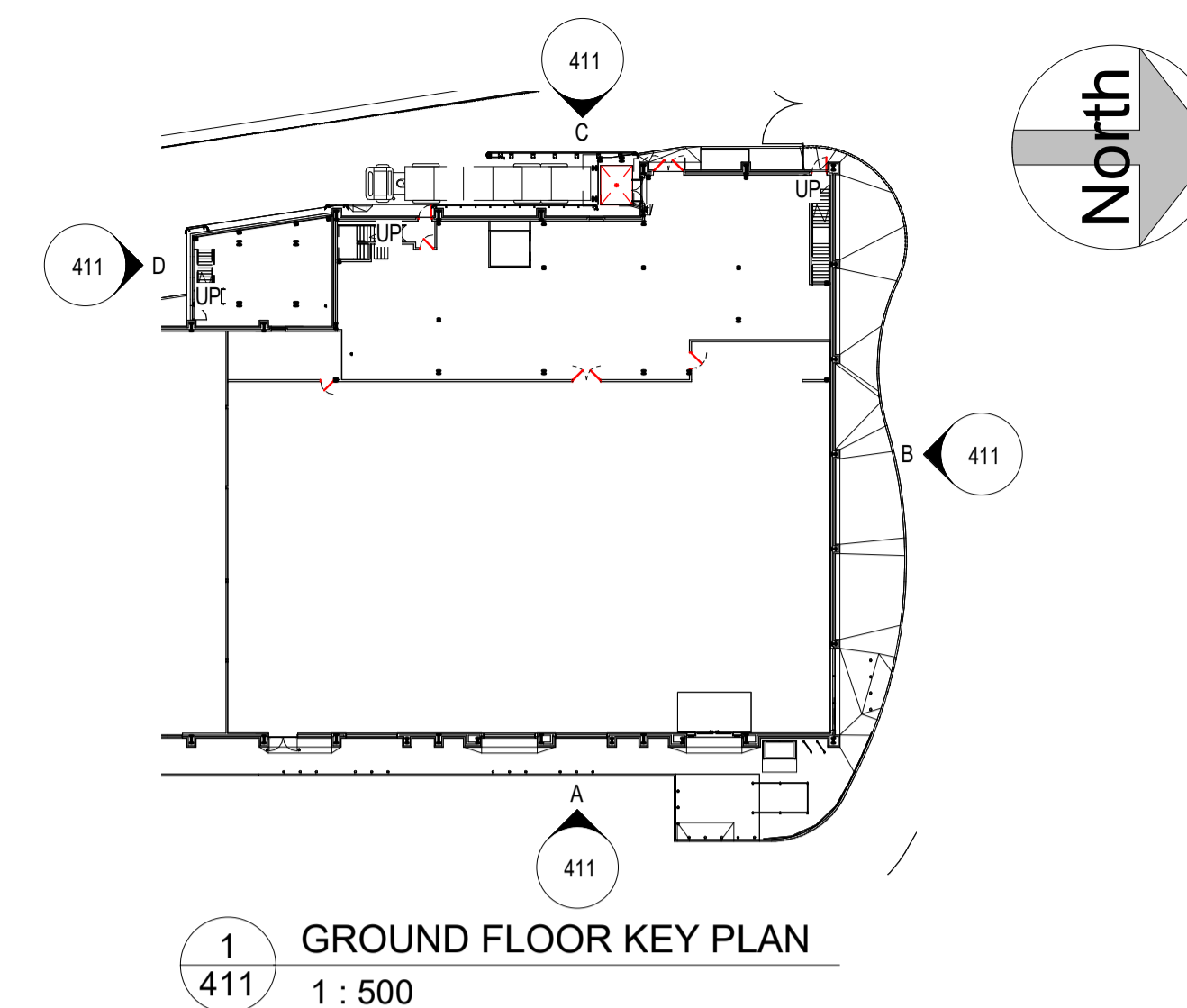


VISUAL SCALE 1:100 @ A1

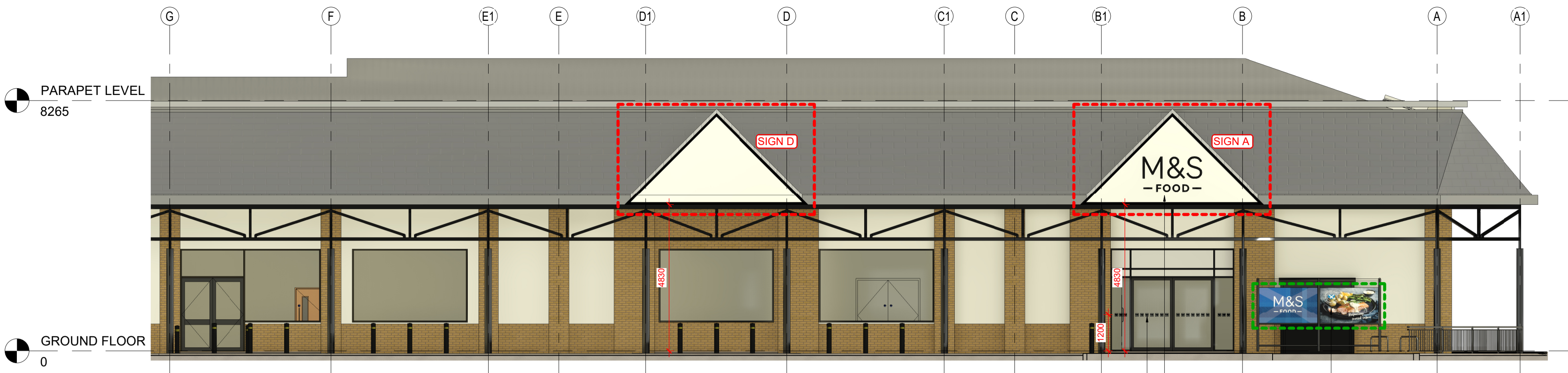


VISUAL SCALE 1:500 @ A1

- PROPOSED SIGNAGE
- PROPOSED VINYL GRAPHIC



1 411 GROUND FLOOR KEY PLAN 1:500

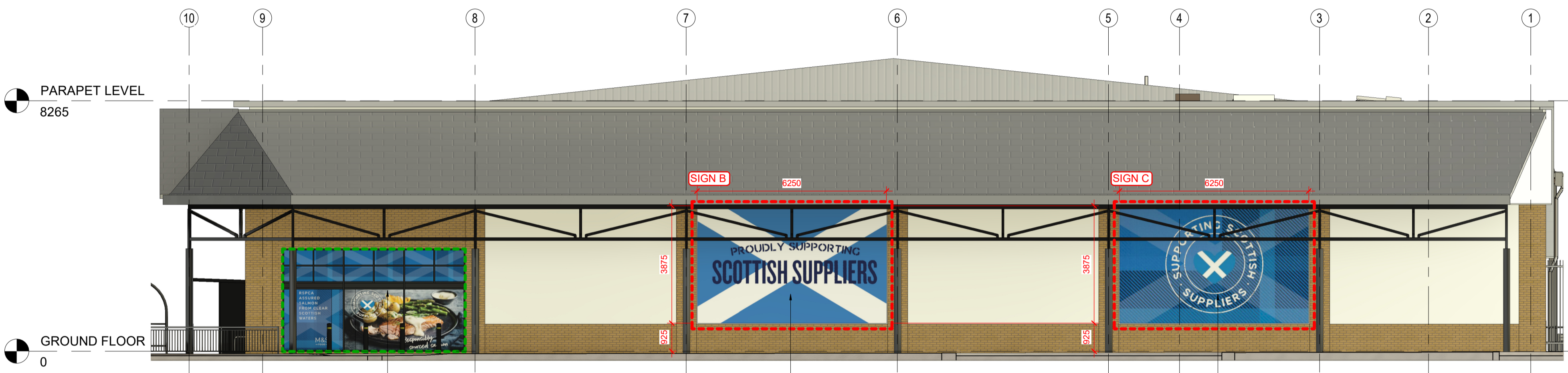


A 411 FRONT ELEVATION (EAST) 1:100

M&S FOOD: DUSTED CRYSTAL SQUARE MANIFESTATIONS (100MM X 100MM) ON THE WINDOWS. FINISH TO BE 3M SCOTCHAL FROSTED CRYSTAL WHITE 7725-324. MANIFESTATIONS TO BE APPLIED AT A HEIGHT OF 1200MM FROM THE FLOOR. EQUAL SPACE BETWEEN EACH MANIFESTATION - AS SHOWN

NEW ILLUMINATED SIGNAGE

NEW VINYL GRAPHICS TO TROLLEY BAY. SEE DRAWING A-412 FOR DETAILS

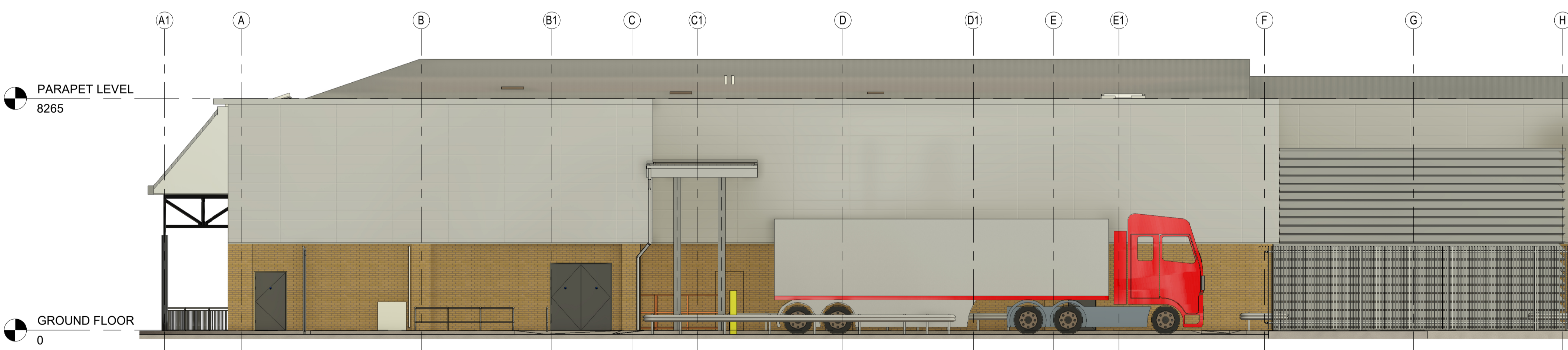


B 411 SIDE ELEVATION (NORTH) 1:100

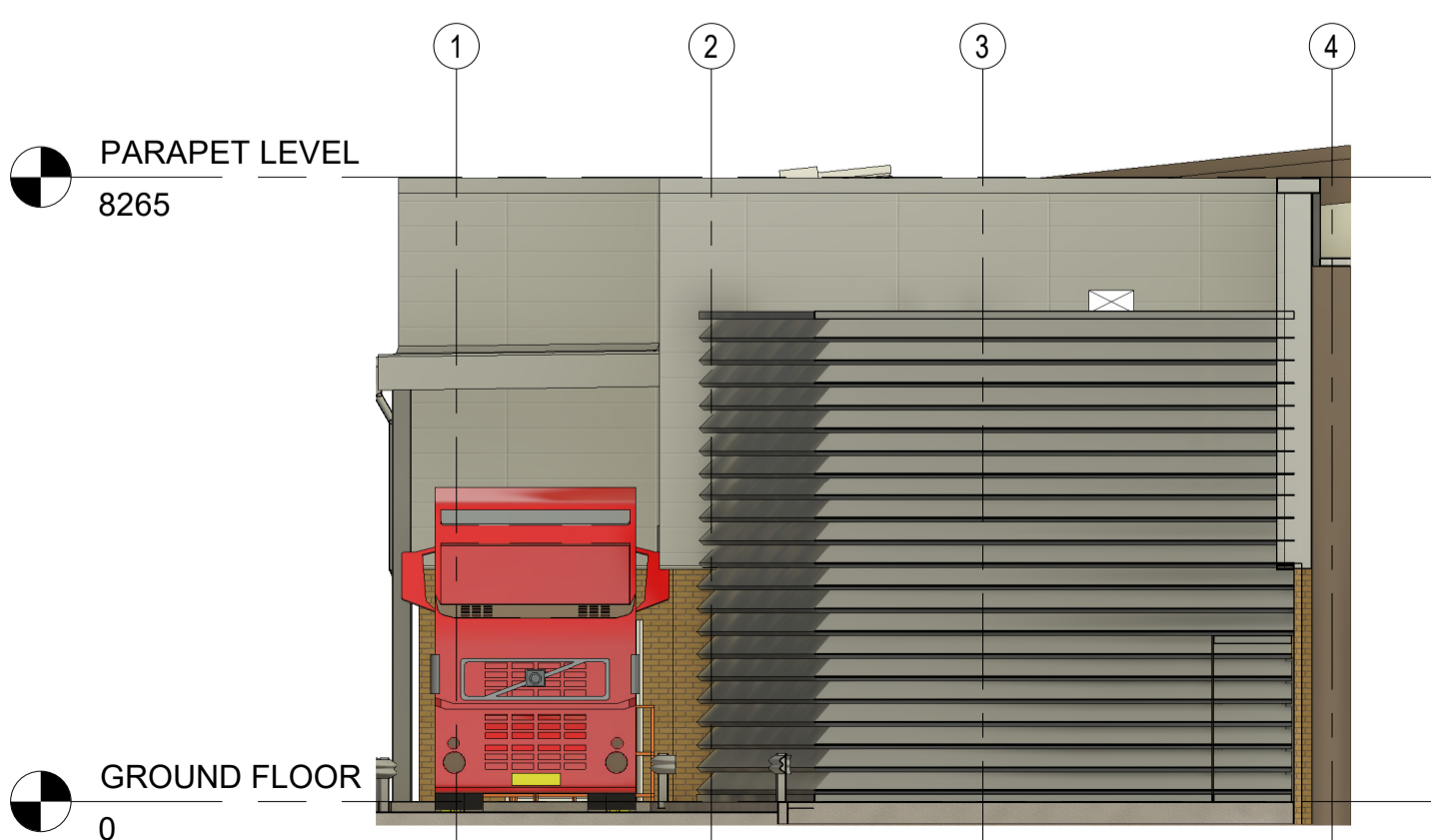
NEW EXTERNALLY APPLIED VINYL GRAPHICS TO GLAZING. GRAPHICS SHOWN INDICATIVELY.

NEW PRINTED DI-BOND METAL PANEL FIXED TO WALL. GRAPHICS SHOWN INDICATIVELY.

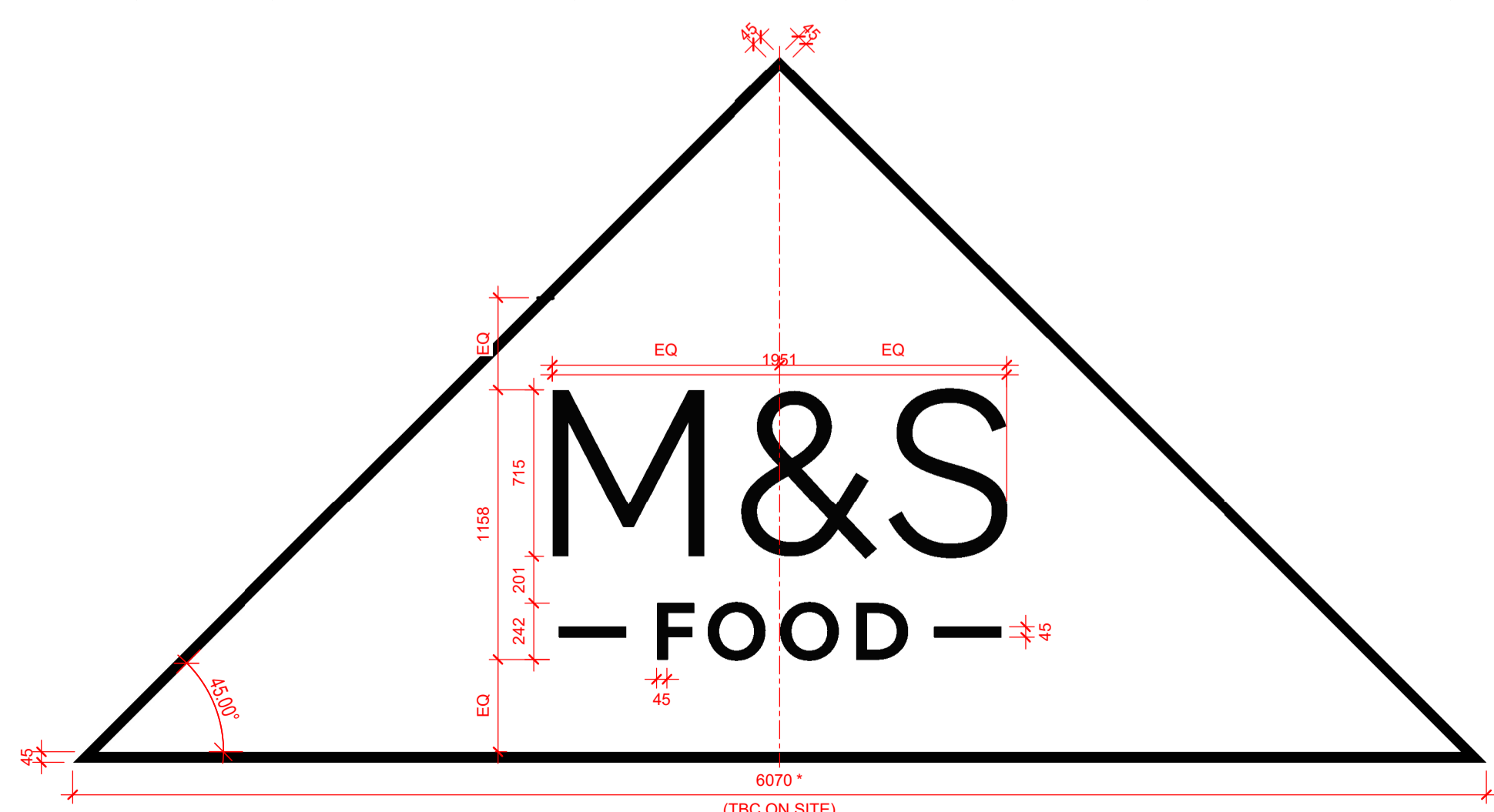
NEW PRINTED DI-BOND METAL PANEL FIXED TO WALL. GRAPHICS SHOWN INDICATIVELY.



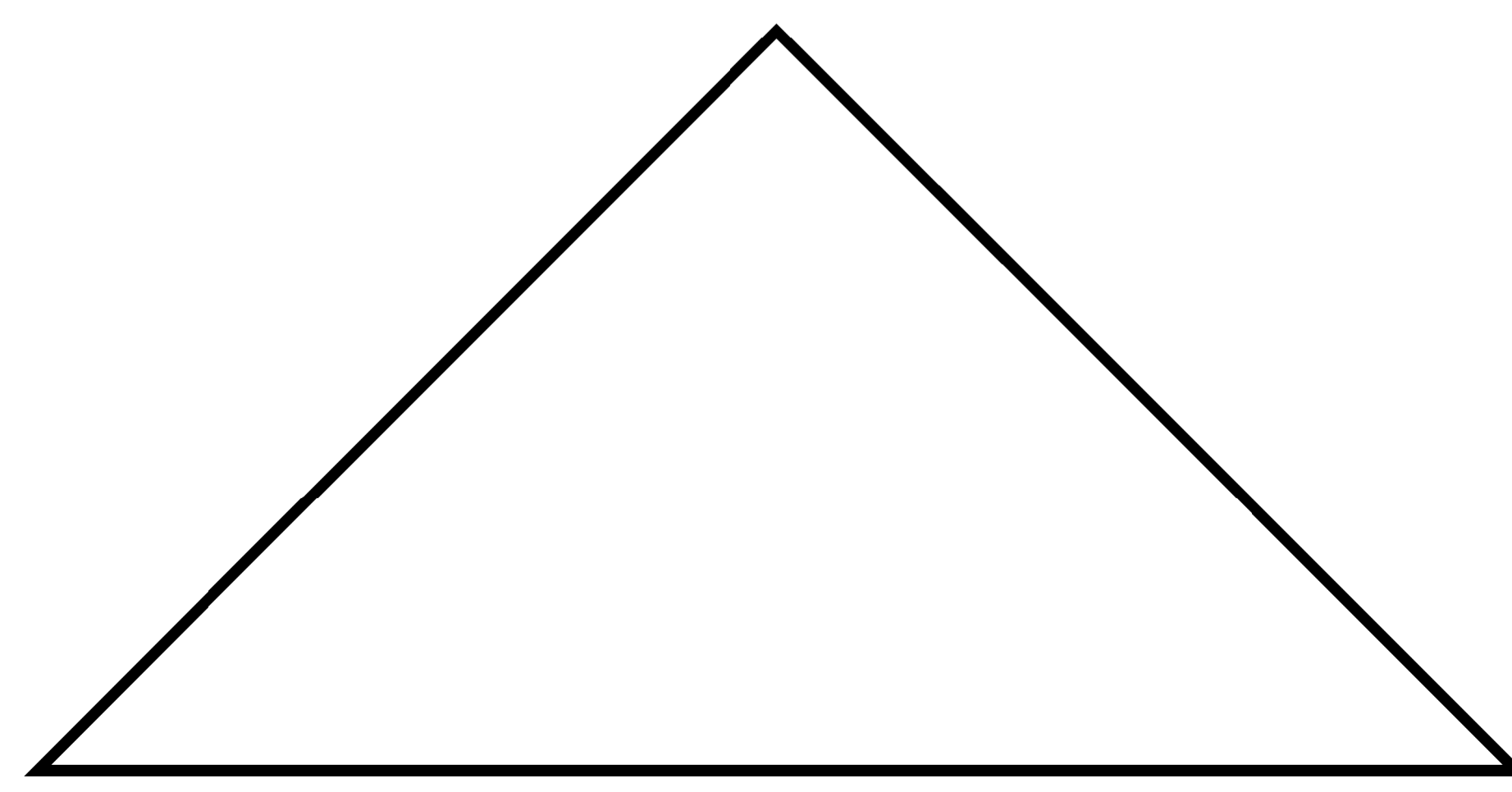
C 411 REAR ELEVATION - (WEST) 1:100



D 411 SIDE ELEVATION (SOUTH) 1:100



2 411 SIGN A DETAILS 1:25



3 411 SIGN D DETAILS 1:25

**SIGN A - ILLUMINATED BOX SIGN**  
(BACKLIT ILLUMINATED BOX FASCIA SIGN WITH 'M&S FOOD' LETTERING AS SHOWN ON ELEVATION)

M&S FOOD SIGNAGE ON FLEXFACE SKIN AS PER SIGNAGE MANUFACTURER'S DETAILS.

ILLUMINATION TO LIGHTBOX TO COMPLY WITH PART L. SIZED AS DETAIL. BACK-LIT BOX ILLUMINATION TO BE SPREAD EVENLY WITHIN THE LIGHTBOX (BY MEANS OF WHITE LED'S) TO PROVIDE EVEN SPREAD OF LIGHT ACROSS THE SURFACE OF THE SIGN, NO SHADOWING TO OCCUR FROM THE LETTERING FIXINGS.

HALO ILLUMINATION TO LETTERS TO BE SPREAD EVENLY WITHIN THE LETTERING (BY MEANS OF WHITE LED'S) TO PROVIDE EVEN SPREAD OF LIGHT ACROSS THE SURFACE OF THE SIGN, NO SHADOWING TO OCCUR FROM THE LETTERING FIXINGS.

ECONOFLEX BOX PROFILE SIGNCASE BLACK SATIN, REF: RAL 9005  
EXTERNAL FLEXFACE SKIN TO BE IN SIGNAL WHITE, REF: RAL 9003  
THE SIGNAGE SKIN IS TO BE COMPLETELY OPAQUE.  
3D LETTERING TO BE IN JET BLACK 100% GLOSS, REF: RAL 9005.

SIGNAGE DEPTH TO BE APPROX. 225mm DEEP AND SIGNAGE FIXED BACK TO CANOPY FRAMING USING DISCREETLY PLACED CONTEMPORARY BRACKETS AND FIXINGS TO STRUCTURAL ENGINEER APPROVAL.

NOTE: ILLUMINATION LEVEL OF FASCIA TO BE CONFIRMED. LETTERS TO HAVE BOTH BACK-LIT LIGHTBOX AND HALO ILLUMINATED LETTERING

**SIGNS B & C - PRINTED DI-BOND METAL PANEL SIGNS**

CUSTOM PRINTED GRAPHICS ON DI-BOND METAL PANELS FIXED DIRECT TO WALL.

**SIGN D - NON-ILLUMINATED SIGN**  
(NON-ILLUMINATED BLANK PANEL AS SHOWN ON ELEVATION)

BLANK PANEL SIGNAGE ON FASCIA AS PER SIGNAGE MANUFACTURER'S DETAILS.

ECONOFLEX BOX PROFILE SIGNCASE BLACK SATIN, REF: RAL 9005  
EXTERNAL FLEXFACE SKIN TO BE IN SIGNAL WHITE, REF: RAL 9003  
THE SIGNAGE SKIN IS TO BE COMPLETELY OPAQUE.

SIGNAGE DEPTH TO BE APPROX. 100mm DEEP AND SIGNAGE FIXED BACK TO CANOPY FRAMING USING DISCREETLY PLACED CONTEMPORARY BRACKETS AND FIXINGS TO STRUCTURAL ENGINEER APPROVAL.

**GENERAL**

EACH SIGNAGE MANUFACTURER MUST COMPLETE THEIR OWN SET OF PROJECT SPECIFIC DESIGN DRAWINGS FOR APPROVAL BY THE M&S DESIGN TEAM. THE DETAILS MATERIAL FINISHES AND QUALITY EXPECTED ARE CLEARLY INDICATED. THESE MUST BE ADHERED TO WITHOUT DEVIATION. IT WILL BE ASSUMED BY M&S THAT ALL MANUFACTURERS ARE AWARE OF THIS SPECIFICATION AND THAT IT IS BEING FOLLOWED EXACTLY. NO DEVIATIONS WILL BE ACCEPTED UNLESS AGREED IN ADVANCE BY THE M&S DESIGN TEAM.

REV	DATE	DESCRIPTION	DRAWN	CHKD
4	31.08.23	SHOPFRONT UPDATED FROM CRITICAL STYLE TO STANDARD GLAZING. GRAPHICS TO SIDE WALL UPDATED TO PRINTED DI-BOND METAL PANELS.	CM	FOC
3	03.05.23	UPDATED TO APPROVED CRF CHANGES.	CM	FOC
2	05.05.22	SIGNED OFF BY STORE PLANNER (AK 04.05.22)	CM	FOC
1	06.12.21	EXTERNAL GRAPHICS UPDATED.	TG	FOC

**M&S**  
EST. 1884

STORE NAME  
**LINLITHGOW**  
COUNTRY  
**SCOTLAND**  
PROJECT  
**NEW FOODHALL**

DRAWING  
**PROPOSED ELEVATIONS AND SIGNAGE DETAILS - ADVERTISEMENT CONSENT**

CONSULTANT  
**LEWIS AND HICKEY**  
DISCIPLINE DESCRIPTION  
**ARCHITECTURE**  
CONSULTANT LOGO

SCALE	PAPER SIZE	DATE	DRAWN	CHECKED
As indicated	A1	30.11.21	TG	CM

STORE NUMBER	PROJECT No.	DISCIPLINE CODE	DRAWING No.
Q0000	LIT002	A	411

CONSULTANT PROJECT No.	STATUS	REVISION
G4661	P	4