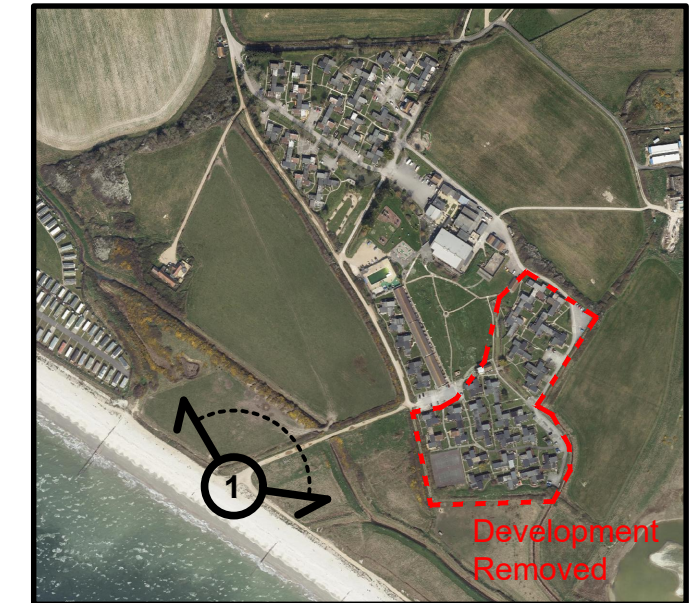




Legend



Viewpoint location: NTS

Viewpoint 1: View looking broadly north elevated beach path at southern tip of PROW 55

REV.	DESCRIPTION	APP.	DATE



Clews Landscape Architecture Ltd, 57 Hightown Road, Banbury, OX16 9BE
t: 01295702624 w: www.clewsla.co.uk

MEDMERRY PARK HOLIDAY VILLAGE
PO20 7JP

L VIA
VIEWPOINTS 1

DWG. NO: 22_261_VS1

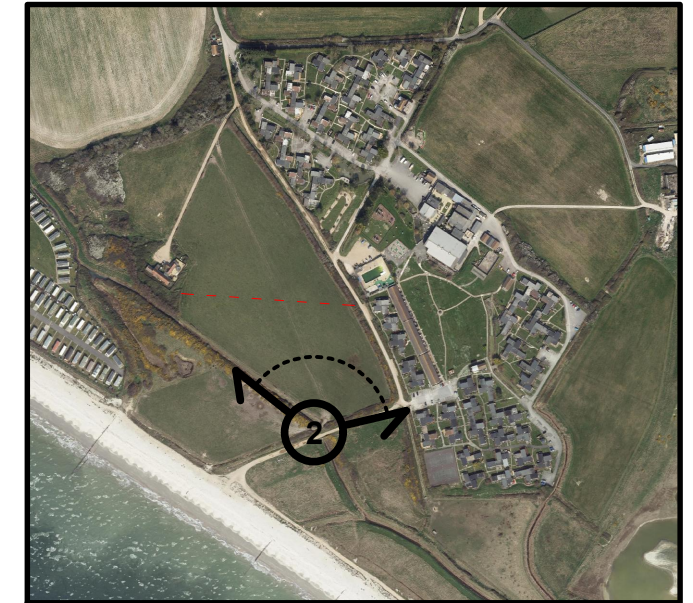
SCALE	NTS@A3	DATE	JAN 2022
STATUS	PLANNING	DRAWN	CC

No dimensions are to be scaled from this drawing. All dimensions are to be checked on site. Area measurements for indicative purposes only.

© Clews Landscape Architecture Ltd



Legend



Viewpoint location: NTS

Viewpoint 2: View looking broadly north from PROW 55, at the southern boundary tip of Field E

REV.	DESCRIPTION	APP.	DATE



Clews Landscape Architecture Ltd, 57 Hightown Road, Banbury, OX16 9BE
t: 01295702624 w: www.clewsla.co.uk

MEDMERRY PARK HOLIDAY VILLAGE
PO20 7JP

LVIA
VIEWPOINTS 2

DWG. NO: 22_261_VS2

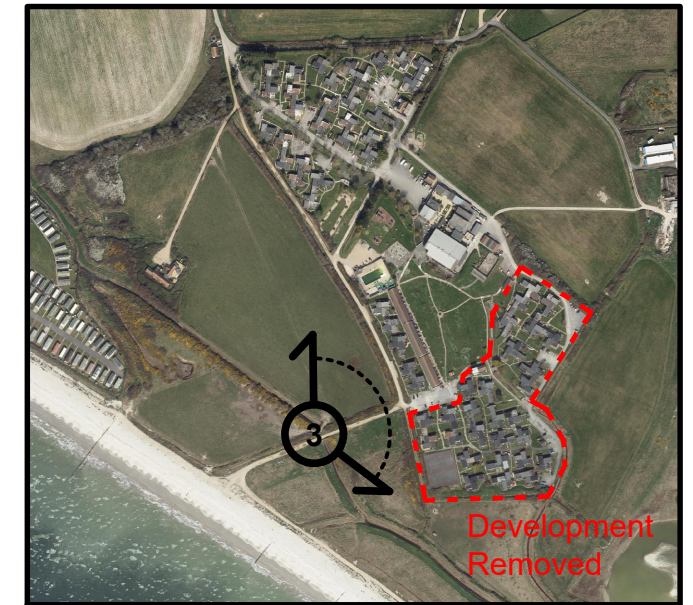
SCALE	NTS@A3	DATE	JAN 2022
STATUS	PLANNING	DRAWN	CC

No dimensions are to be scaled from this drawing. All dimensions are to be checked on site. Area measurements for indicative purposes only.

© Clews Landscape Architecture Ltd



Legend



Viewpoint location: NTS

Viewpoint 3: View looking broadly north east from PROW 55, at the southern boundary tip of Field E



REV.	DESCRIPTION	APP.	DATE



Clews Landscape Architecture Ltd, 57 Hightown Road, Banbury, OX16 9BE
t: 01295702624 w: www.clewsla.co.uk

MEDMERRY PARK HOLIDAY VILLAGE
PO20 7JP

L VIA
VIEWPOINTS 3

DWG. NO: 22_261_VS3

SCALE	NTS@A3	DATE	JAN 2022
STATUS	PLANNING	DRAWN	CC

No dimensions are to be scaled from this drawing. All dimensions are to be checked on site. Area measurements for indicative purposes only.

© Clews Landscape Architecture Ltd



Legend



Viewpoint location: NTS

Viewpoint 4: View looking broadly north west from PROW 55, on eastern boundary of Field E

REV.	DESCRIPTION	APP.	DATE



Clews Landscape Architecture Ltd, 57 Hightown Road, Banbury, OX16 9BE
t: 01295702624 w: www.clewsla.co.uk

MEDMERRY PARK HOLIDAY VILLAGE
PO20 7JP

LVIA
VIEWPOINTS 4

DWG. NO: 22_261_VS4

SCALE	NTS@A3	DATE	JAN 2022
STATUS	PLANNING	DRAWN	CC

No dimensions are to be scaled from this drawing. All dimensions are to be checked on site. Area measurements for indicative purposes only.

© Clews Landscape Architecture Ltd



Legend



Viewpoint location: NTS

Viewpoint 5: View looking broadly south from PROW 55/ Lane on western corner of Field A

REV.	DESCRIPTION	APP.	DATE
------	-------------	------	------



Clews Landscape Architecture Ltd, 57 Hightown Road, Banbury, OX16 9BE
t: 01295702624 w: www.clewsla.co.uk

MEDMERRY PARK HOLIDAY VILLAGE
PO20 7JP

LVIA
VIEWPOINTS 5

DWG. NO: 22_261_VS5

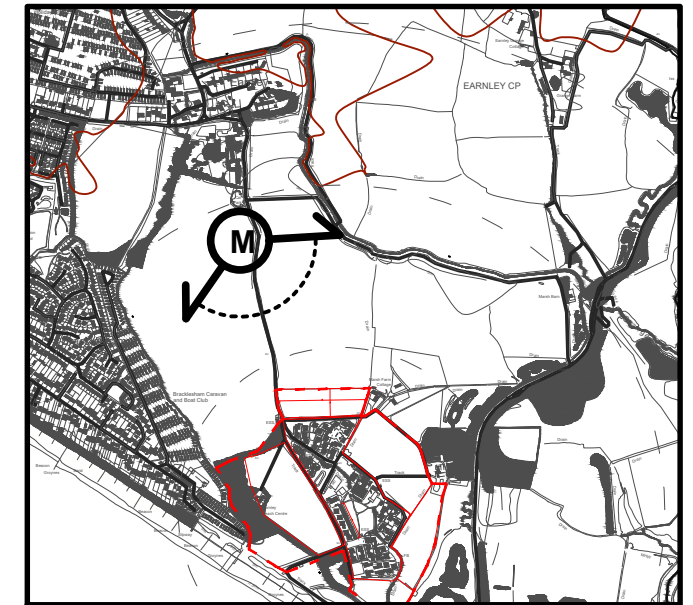
SCALE	NTS@A3	DATE	JAN 2022
STATUS	PLANNING	DRAWN	CC

No dimensions are to be scaled from this drawing. All dimensions are to be checked on site. Area measurements for indicative purposes only.

© Clews Landscape Architecture Ltd



Legend



Viewpoint location: NTS

Viewpoint M: View looking broadly south from PROW 55/ Drove lane 475m north of redline boundary



REV.	DESCRIPTION	APP.	DATE



Clews Landscape Architecture Ltd, 57 Hightown Road, Banbury, OX16 9BE
t: 01295702624 w: www.clewsla.co.uk

MEDMERRY PARK HOLIDAY VILLAGE
PO20 7JP

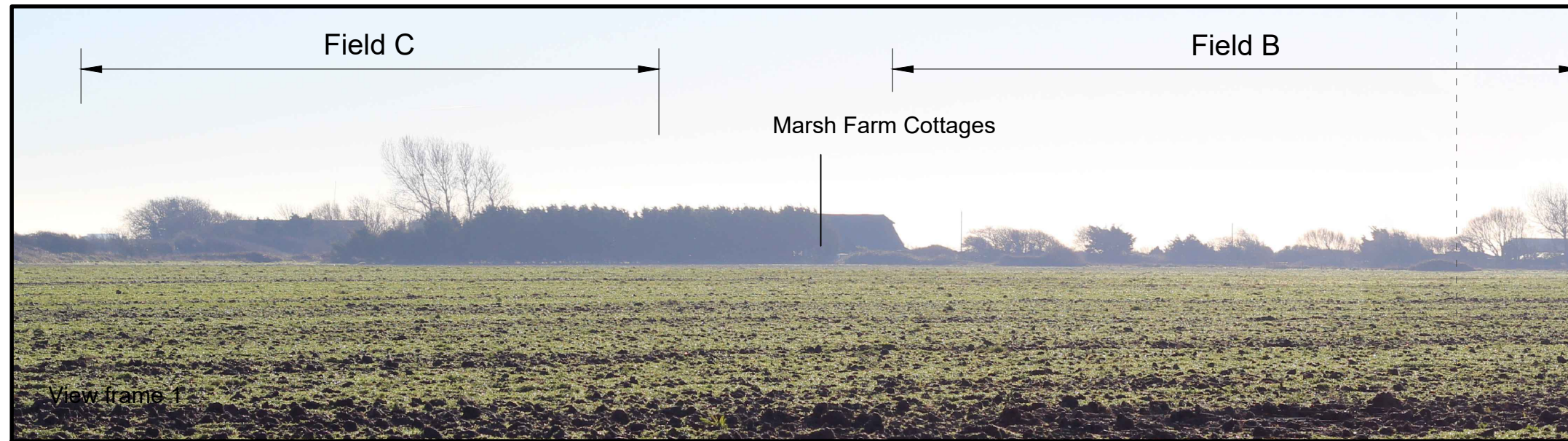
LVA
VIEWPOINTS M

DWG. NO: 22_261_VS6

SCALE	NTS@A3	DATE	JAN 2022
STATUS	PLANNING	DRAWN	CC

No dimensions are to be scaled from this drawing. All dimensions are to be checked on site. Area measurements for indicative purposes only.

© Clews Landscape Architecture Ltd



View frame 1

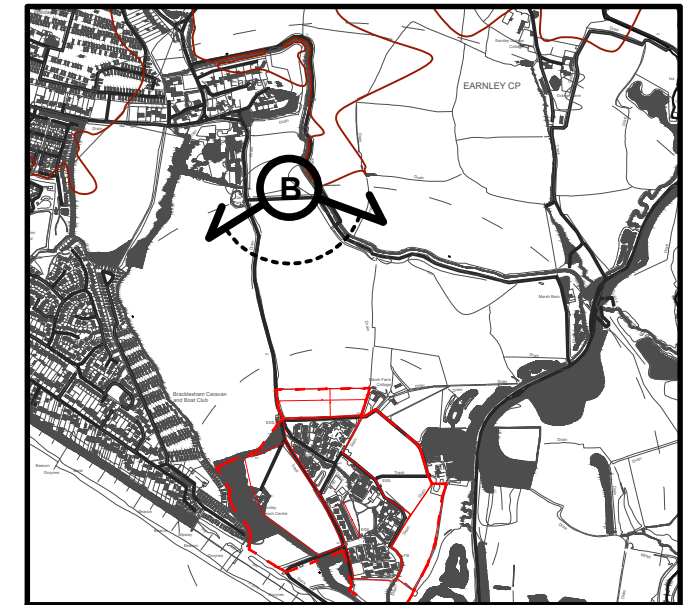


View frame 2



View frame 3

Legend



Viewpoint location: NTS

Viewpoint B: View looking broadly south from PROW 3750, 600m north of redline

REV.	DESCRIPTION	APP.	DATE
------	-------------	------	------



Clews Landscape Architecture Ltd, 57 Hightown Road, Banbury, OX16 9BE
t: 01295702624 w: www.clewsla.co.uk

MEDMERRY PARK HOLIDAY VILLAGE
PO20 7JP

LVIA
VIEWPOINTS B

DWG. NO: 22_261_VS7

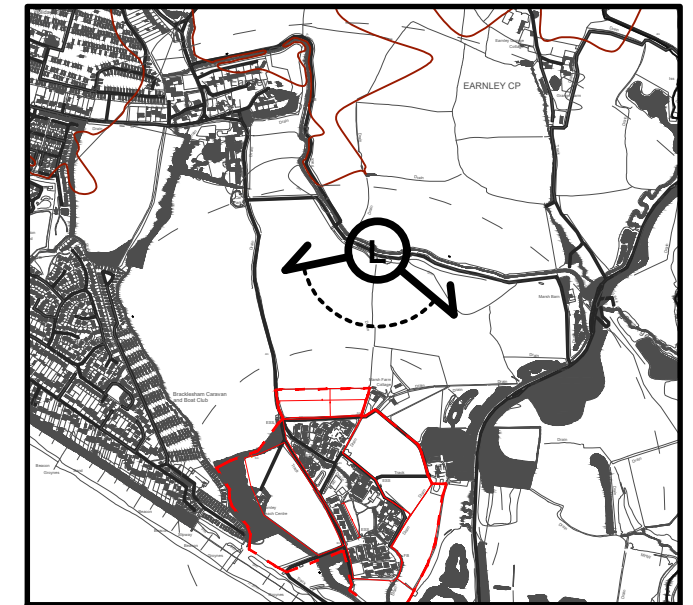
SCALE	NTS@A3	DATE	JAN 2022
STATUS	PLANNING	DRAWN	CC

No dimensions are to be scaled from this drawing. All dimensions are to be checked on site. Area measurements for indicative purposes only.

© Clews Landscape Architecture Ltd



Legend



Viewpoint location: NTS

Viewpoint L: View looking broadly south from PROW 3750, 400m north of redline



REV.	DESCRIPTION	APP.	DATE
------	-------------	------	------



Clews Landscape Architecture Ltd, 57 Hightown Road, Banbury, OX16 9BE
t: 01295702624 w: www.clewsla.co.uk

MEDMERRY PARK HOLIDAY VILLAGE
PO20 7JP

LVIA
VIEWPOINTS L

DWG. NO: 22_261_VS8

SCALE	NTS@A3	DATE	JAN 2022
STATUS	PLANNING	DRAWN	CC

No dimensions are to be scaled from this drawing. All dimensions are to be checked on site. Area measurements for indicative purposes only.

© Clews Landscape Architecture Ltd



View frame 1



View frame 2



View frame 3

Legend



Viewpoint location: NTS

Viewpoint E: View looking broadly south west from PROW 3750 at Marsh Barn, 650m north-east of redline

REV.	DESCRIPTION	APP.	DATE
------	-------------	------	------



Clews Landscape Architecture Ltd, 57 Hightown Road, Banbury, OX16 9BE
t: 01295702624 w: www.clewsla.co.uk

MEDMERRY PARK HOLIDAY VILLAGE
PO20 7JP

L VIA
VIEWPOINTS E

DWG. NO: 22_261_VS9

SCALE	NTS@A3	DATE	JAN 2022
STATUS	PLANNING	DRAWN	CC



Legend



Viewpoint location: NTS

Viewpoint F: View looking broadly west from PROW 3750, 450m east of redline



REV.	DESCRIPTION	APP.	DATE



Clews Landscape Architecture Ltd, 57 Hightown Road, Banbury, OX16 9BE
t: 01295702624 w: www.clewsla.co.uk

MEDMERRY PARK HOLIDAY VILLAGE
PO20 7JP

L VIA
VIEWPOINTS F

DWG. NO: 22_261_VS10

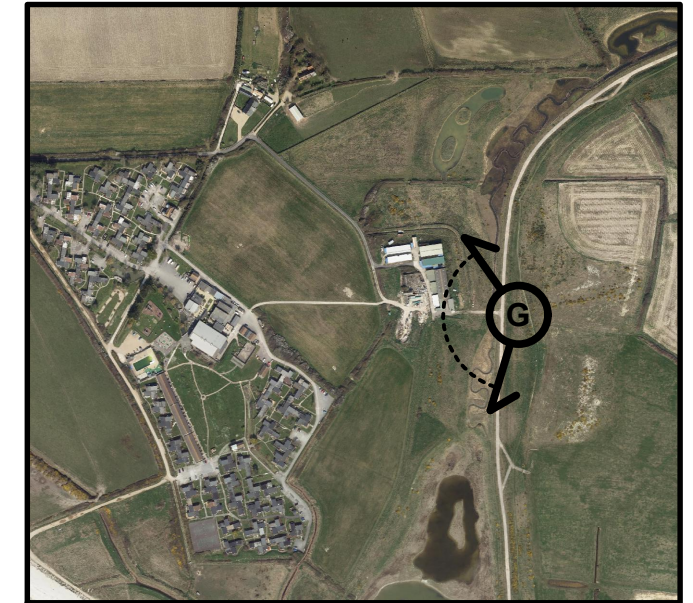
SCALE	NTS@A3	DATE	JAN 2022
STATUS	PLANNING	DRAWN	CC

No dimensions are to be scaled from this drawing. All dimensions are to be checked on site. Area measurements for indicative purposes only.

© Clews Landscape Architecture Ltd



Legend



Viewpoint location: NTS

Viewpoint G: View looking broadly west from PROW 3750, 100m east of redline

REV.	DESCRIPTION	APP.	DATE



Clews Landscape Architecture Ltd, 57 Hightown Road, Banbury, OX16 9BE
t: 01295702624 w: www.clewsla.co.uk

MEDMERRY PARK HOLIDAY VILLAGE
PO20 7JP

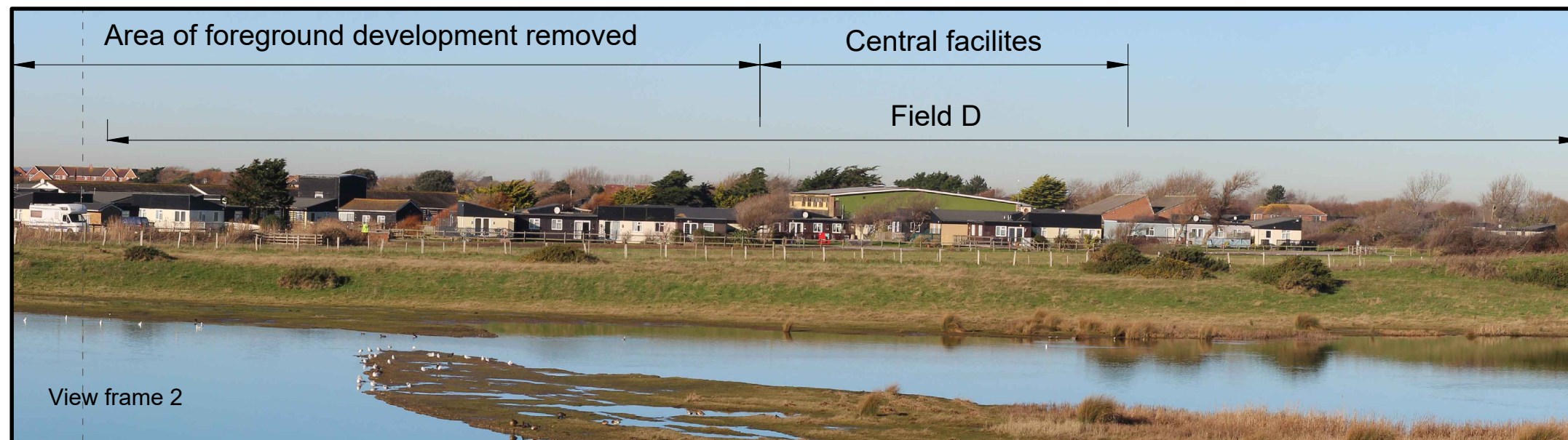
L VIA
VIEWPOINTS G

DWG. NO: 22_261_VS11

SCALE	NTS@A3	DATE	JAN 2022
STATUS	PLANNING	DRAWN	CC

No dimensions are to be scaled from this drawing. All dimensions are to be checked on site. Area measurements for indicative purposes only.

© Clews Landscape Architecture Ltd



Legend



Viewpoint location: NTS

Viewpoint H: View looking broadly west from PROW 3750, 250m south-east of redline

REV.	DESCRIPTION	APP.	DATE
------	-------------	------	------



Clews Landscape Architecture Ltd, 57 Hightown Road, Banbury, OX16 9BE
t: 01295702624 w: www.clewsla.co.uk

MEDMERRY PARK HOLIDAY VILLAGE
PO20 7JP

L VIA
VIEWPOINTS H

DWG. NO: 23_261_VS12

SCALE	NTS@A3	DATE	JAN 2022
STATUS	PLANNING	DRAWN	CC

No dimensions are to be scaled from this drawing. All dimensions are to be checked on site. Area measurements for indicative purposes only.

© Clews Landscape Architecture Ltd