

OCCUPANCY CAPACITY

Occupancy capacity has been calculated in accordance with regulation 2.9.2

RETAIL/ WAITING	(load factor 2.0)	14.9m ²	7 persons	(public)
CONSULTATION 1	(load factor 1.0)	4.1m ²	4 persons	(public and staff)
CONSULTATION 2	(load factor 1.0)	3.2m ²	3 persons	(public and staff)
DISPENSARY	(load factor 5.0)	41.4m ²	5 persons	(staff)
STAFF AREA	(load factor 2.0)	5.1m ²	2 persons	(staff)

TOTAL OCC CAPACITY (based on load factor) 21 persons

Assumed public numbers (based on figures above) 12 persons
 Assumed staff number (based on figures above) 9 persons

VENTILATION CALCULATION

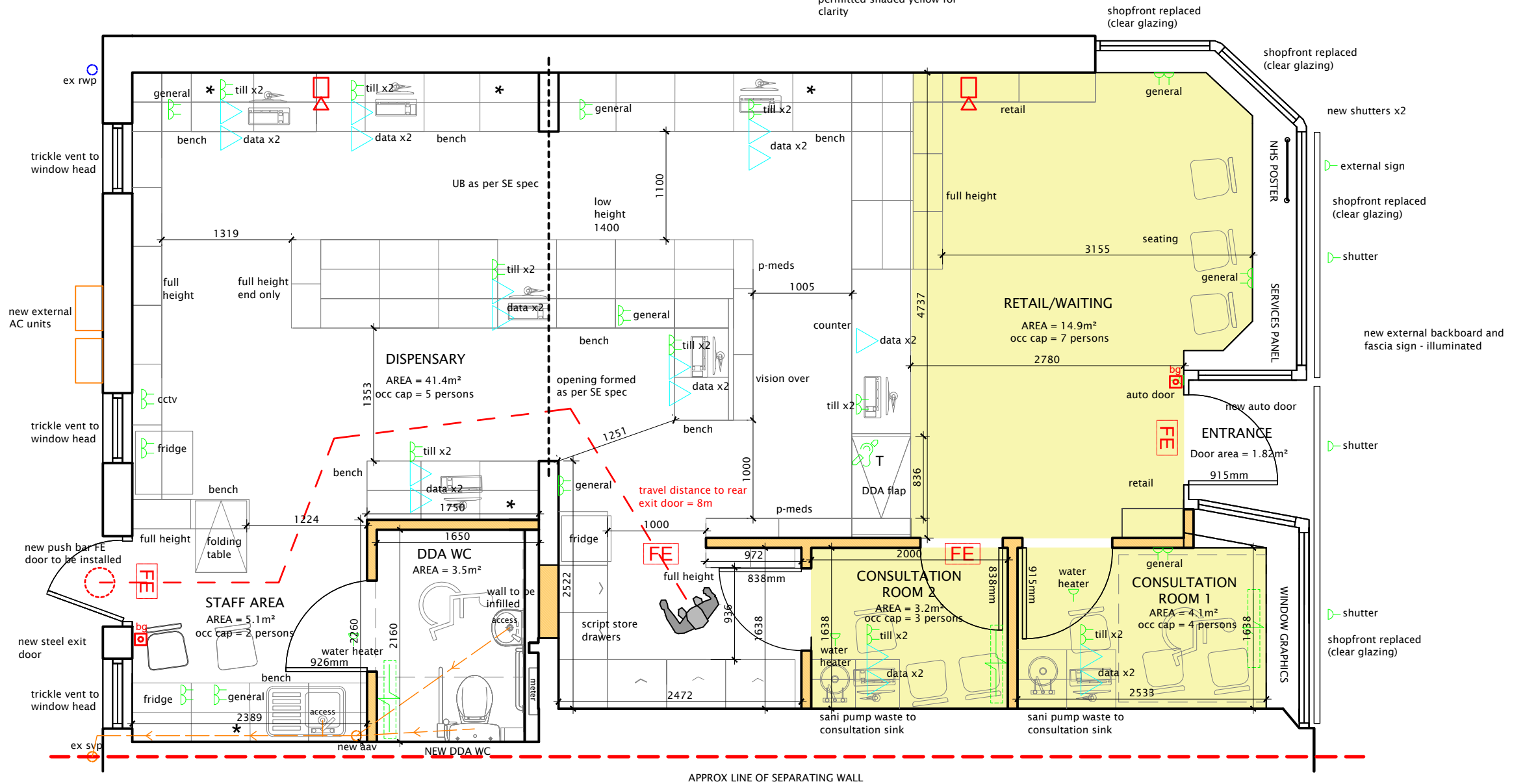
Retail/waiting area	Floor area 14.9m ²	(1/30th of floor area = 0.49m ²)
Dispensary	Floor area 36.8m ²	(1/30th of floor area = 1.22m ²)

Total = 1.71m²

Entrance door area = (1.82m²) 1.82m² is greater than 1.71m² therefore entrance door provides adequate ventilation to spaces above

* Wall mounted over bench with NO gables on bench

area members of public permitted shaded yellow for clarity



LEGEND

- single 13amp switch outlet
- two 13amp switch outlet
- single 13amp switch outlet 1200mm above floor level
- two 13amp switch outlet 1200mm above floor level
- High level isolator switch for extract fan
- 1 gang light switch
- 2 gang light switch
- 1 gang two way light switch
- 2 gang two way light switch
- Pendant light fitting
- 200mm dia LED array recessed downlights
- wall light
- external light
- ventilation extract vent
- ventilation supply vent
- smoke detector
- heat detector
- optical smoke detector
- carbon dioxide detector
- carbon monoxide detector
- emergency drop light with 3hr battery pack and photogram signage - maintained type
- BT (data connection) / cat 5e
- mobile induction loop aid to conform to EN60118-4 & BS7594-1993
- Internal ceiling mounted heat pump AC cassettes
- 600x600mm recessed LED array module
- white LED continuous strip downlight - by SD
- RGB LED continuous strip uplight (or similar) with remote control
- denotes LED emergency light fixture
- music speakers recessed into ceiling, linked to music system
- 600x600mm recessed 300w radiant ceiling heater with programmable thermostat - bio thermal or similar (GM - surface mounted)
- sounder
- break glass call point
- Panel heater

Rev.	Date	Details	Drawn	Checked
	05.05.2023	BW ISSUE	JM	MH

HAB ARCHITECTURE

6 Fauldhouse Road, Longridge, Bathgate, West Lothian, EH47 8AW
 t: 01501 770986
 e: info@habarchitecture.com
 w: www.habarchitecture.com

Issued for: **BUILDING WARRANT**

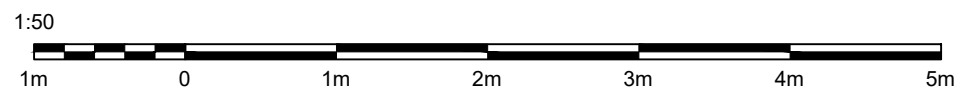
Project/Client: **ALTERATIONS**
 125 CLEVEDEN ROAD, GLASGOW, G12 0JH
 FOR FIRST STOP PHARMACY

Drawing: **GROUND FLOOR PLAN AS PROPOSED**

Dwg No:	Scale:	
2316 - D104	AS NOTED	@A3
Rev:	Drawn By:	Date:
	JM	05.05.23

GROUND FLOOR PLAN AS PROPOSED

Scale 1:50



DDA Reception Desk
 Reception desk to be DDA compliant
 Desk to have 2 levels - 1 for standing at max height 900-1100mm & 1 for wheelchair users at approx. 750mm above floor, with knee recess min. 500mm deep x 700mm high (both sides) and manoeuvring space in front at least 1200mm deep

