

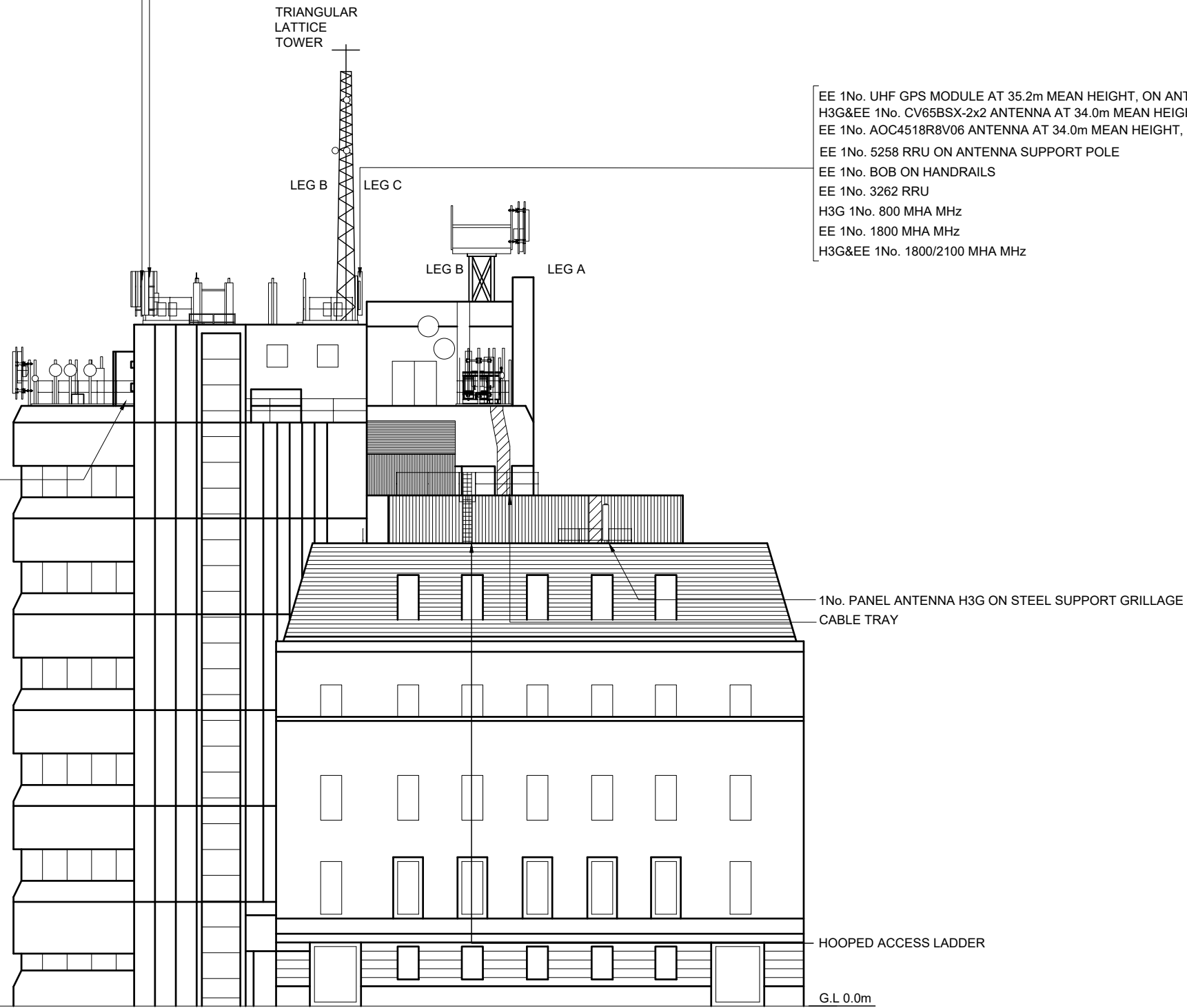
H3G&EE 1No. CV65BSX-2x2 ANTENNA AT 34.0m MEAN HEIGHT, BEARING 239° E.T.N.  
 EE 1No. AOC4518R8V06 ANTENNA AT 34.0m MEAN HEIGHT, BEARING 239° E.T.N. ON STEELWORK.  
 EE 1No. 5258 RRU ON ANTENNA SUPPORT POLE  
 EE 1No. BOB ON ANTENNA STEELWORK  
 EE 1No. 3262 RRU  
 H3G 1No. 800 MHA MHz  
 EE 1No. 1800 MHA MHz  
 H3G&EE 1No. 1800/2100 MHA MHz

H3G&EE 1No. CV65BSX-2x2 ANTENNA AT 34.0m MEAN HEIGHT, BEARING 310° E.T.N.  
 EE 1No. AOC4518R8V06 ANTENNA AT 34.0m MEAN HEIGHT, BEARING 310° E.T.N. ON STEELWORK  
 EE 1No. 5258 RRU ON ANTENNA SUPPORT POLE  
 EE 1No. BOB ON HANDRAILS  
 EE 1No. 3262 RRU  
 H3G 1No. 800 MHA MHz  
 EE 1No. 1800 MHA MHz  
 H3G&EE 1No. 1800/2100 MHA MHz

EE 1No. UHF GPS MODULE AT 35.2m MEAN HEIGHT, ON ANTENNA SUPPORT POLE  
 H3G&EE 1No. CV65BSX-2x2 ANTENNA AT 34.0m MEAN HEIGHT BEARING 109° E.T.N.  
 EE 1No. AOC4518R8V06 ANTENNA AT 34.0m MEAN HEIGHT, BEARING 109° E.T.N. ON STEELWORK  
 EE 1No. 5258 RRU ON ANTENNA SUPPORT POLE  
 EE 1No. BOB ON HANDRAILS  
 EE 1No. 3262 RRU  
 H3G 1No. 800 MHA MHz  
 EE 1No. 1800 MHA MHz  
 H3G&EE 1No. 1800/2100 MHA MHz

EE 2No. BOB  
 EE 1No. BOB ON VERTICAL CABLE LADDER  
 EE 1No. IMB05 ON VERTICAL LADDER

35.2m  
 34.2m 34.4m  
 34.1m



©2020 Cellnex  
 All rights reserved. No part of this publication may be reproduced, stored in a retrieval system or transmitted in any form or by any means (Electronic, Mechanical, Photocopying, Recording or otherwise), without the prior written consent of the Company.

NOTES

PROJECT No. COM-0025768

CELL No. SDL026

BT SKYLINE No. SR0007

PROJ No			
PROJ No			
PROJ No			
B	PROJ No COM-0025768 AMEND	17/11/23	GBCGBC
A	PROJ No COM-0025768 PLANNING APPLICATION	25/10/23	GBCGBC
ISS	REVISION	DATE	DRN APP



CELLNEX UK  
 R+, 4TH FLOOR, 2 BLAGRAVE STREET, READING, RG1 1AZ  
 Tel. 020 4526 8553

SITE No 167946  
 SUNDERLAND ATE  
 ST THOMAS STREET  
 SUNDERLAND  
 TYNE AND WEAR  
 SR1 1QD

NGR NZ 39890 57090

OS GRID 439890 557090

TITLE  
 ELEVATION  
 EXISTING  
 SOUTH

SCALE 1:250

DRAWN GBC 17/11/23

APPROVED GBC 17/11/23

DRG No. Sheet 1 of 1 Rev

167946-02-002-MD027 B