



Image 1 Current front window single glazed timber frame. Proposal to replace with window frame of identical design (doubled glazed made of hardwood and painted white)

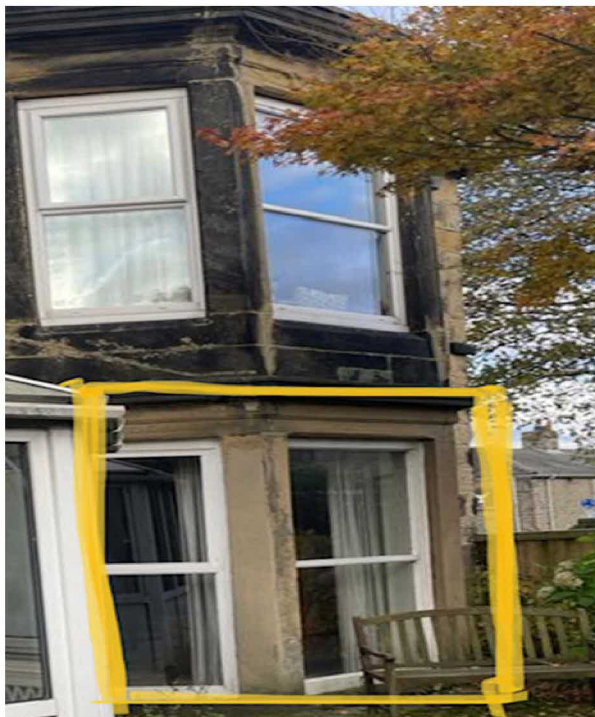


Image 2

Current timber single glazed window to side of flat 1. Proposal to upgrade to UPVC double glazed window with white frame in identical style to existing and consistent with first floor window (currently UPVC double glazed)



Image 3 and 4 (below) showing 5 windows to rear of Flat 1 currently timber single glazed. Proposal to upgrade to UPVC double glazed in style consistent with first floor windows (currently UPVC double glazing).

