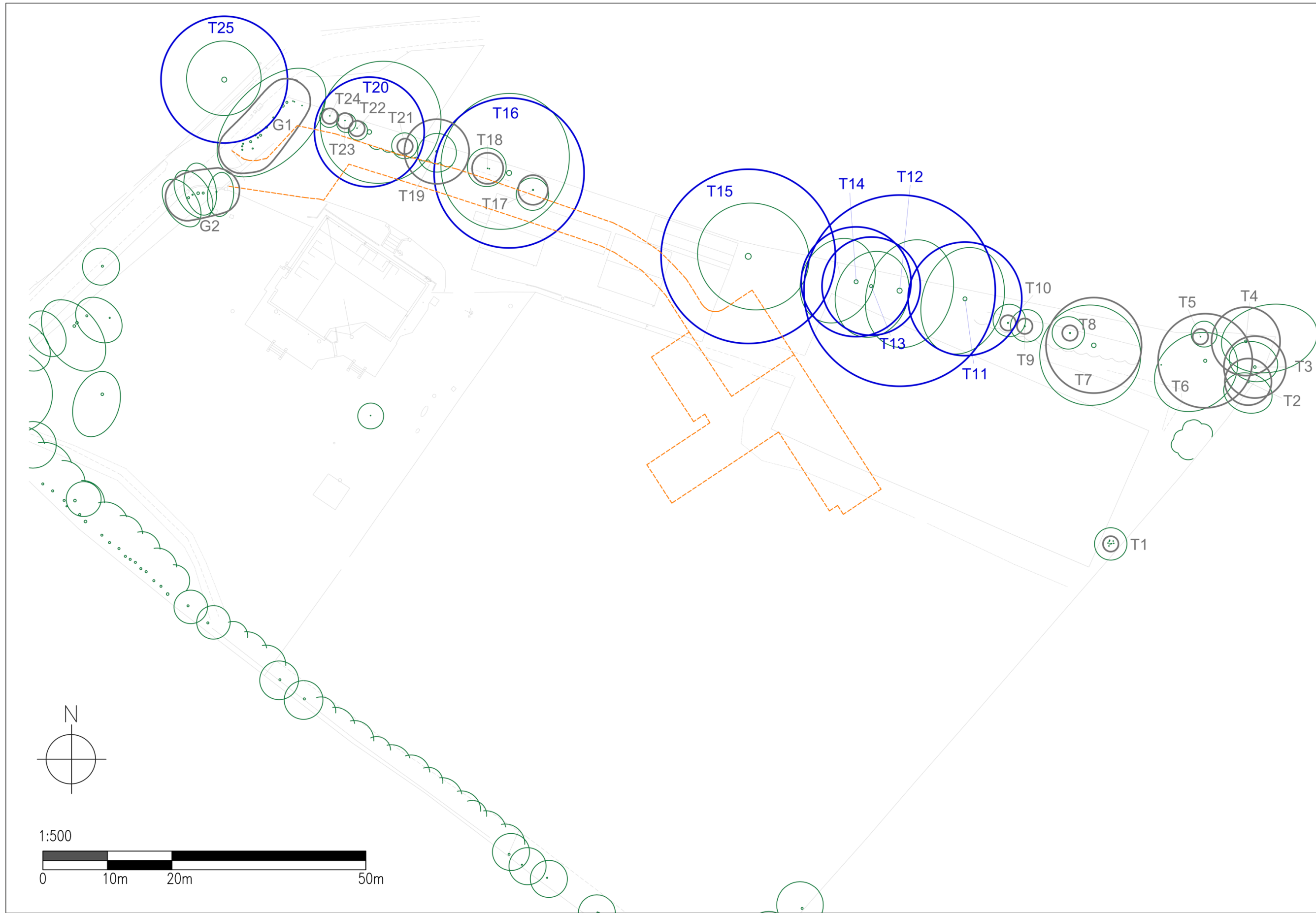


Tree Constraints Plan_TCP_Arnewood House_August_2023



Trees / Tree groups / Hedgerow location are shown using the BS5837 Colour coding detailed below. This will invariably show the Root Protection Area (RPA), and where the Canopy Spread exceeds the RPA diameter, this will also be shown.

Where Topographical Surveys have not been supplied best estimates are made regarding the trees position.

In order to ensure Protection measures are provided in the correct location, it is advised that this drawing is not used for scaling, but that the Tree Data Schedule is interrogated, and precise measurements used to establish the line of Tree Protection measures.

The colours representing the assessed value of trees

	RPA of Category A Trees High Quality
	RPA of Category B Trees Moderate Quality
	RPA of Category C Trees Low Quality
	RPA of Category U Trees Poor Quality
	Unless otherwise stated, North is to the top of the drawing.

Paul Diamond

Member
CIEEM

Associate Member
Landscape Institute

Arboricultural Association
Professional Member

Notes: Proposal and driveway shown in Orange.

The route of the drive way may vary slightly to that shown, but the No – Dig requirements detailed within the ASR report must be adhered to. Tree Protection must not be scaled from this drawing and measurements must be taken from the Tree Schedule and strictly adhered to. It is considered essential that the driveway construction is supervised by an appropriately experienced arboricultural consultant.