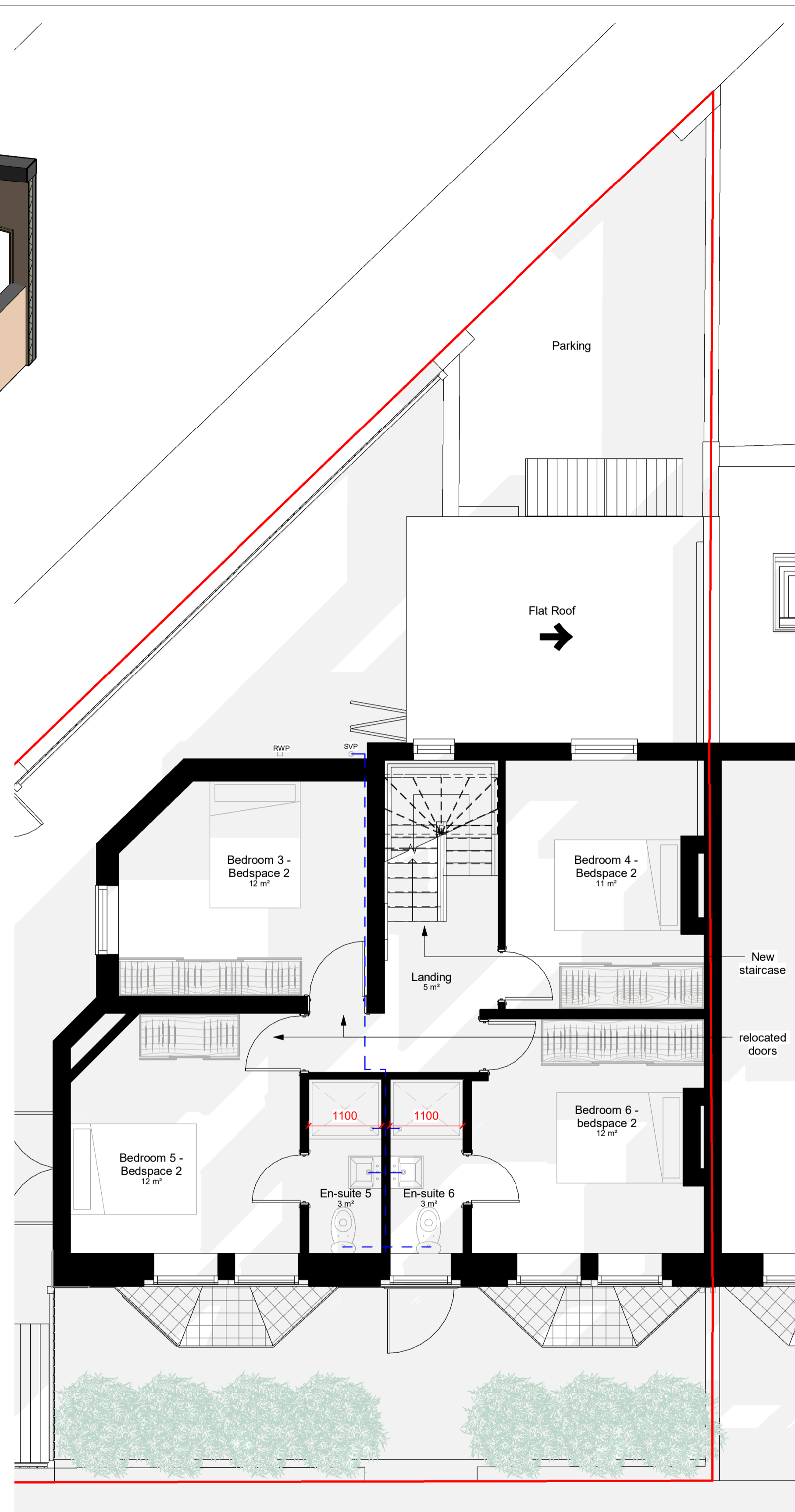


00 Ground Floor - Pr
1 : 50

Floor	Ground Floor	Ground Floor	Ground Floor	Ground Floor	Ground Floor	Ground Floor	First Floor	First Floor	First Floor	First Floor	First Floor	First Floor	Loft Floor	Loft Floor
Room No.	Kitchen & Dining	Living	Bathroom (separate)	Bedroom 1	Bedroom 2	En-suite 2	Bedroom 3	Bedroom 4	Bedroom 5	En-suite 5	Bedroom 6	En-suite 6	Bedroom 7	En-suite 7
Room Area	21m ²	18m ²	4m ²	12m ²	11m ²	3m ²	12m ²	11m ²	12m ²	3m ²	12m ²	3m ²	12m ²	5m ²
Required Area (Housing Act 2004 (July 2023))	10m ²	Total communal living space 22m ²	No. of person sharing 3 (Bedroom 1, 3 & 4)	6.51m ²	6.51m ²	Private	6.51m ²	Private	6.51m ²	Private	6.51m ²	Private	6.51m ²	Private
Area Exceeded by requirements	11m ²	39m ² - 22m ² = 17m ²		5.5m ²	6.5m ²		5.5m ²		5.5m ²		5.5m ²		5.5m ²	

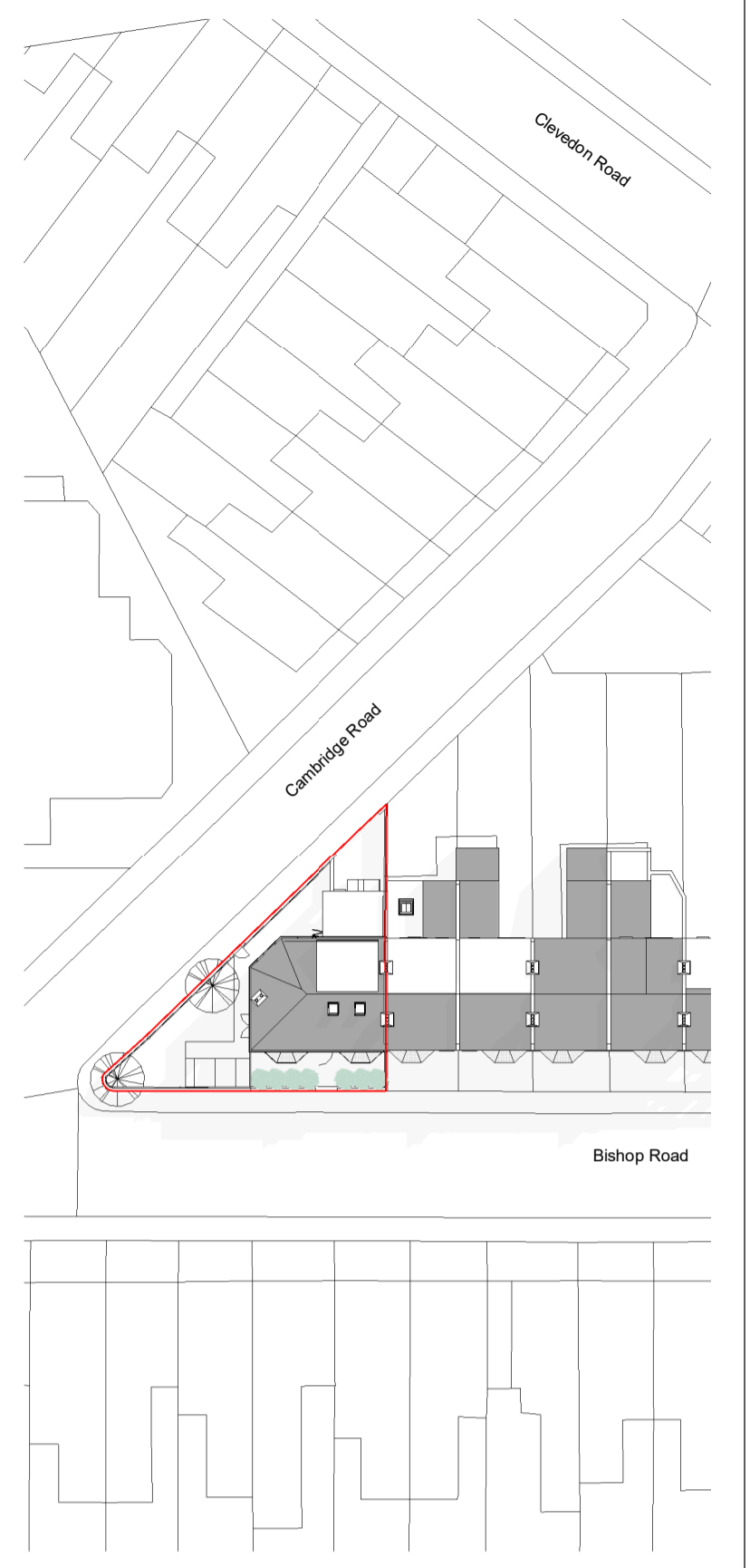
Key Area
1 : 500



01 First Floor - Pr
1 : 50

Storage Type	Quantity
Refuse Secured Store	2 x general waste bin (240)
Bicycle Secured Store	Bicycle store space per one bedroom x 7 and one space for visitor
Indoor Storage	Ground floor under staircase 2m ²

Key Storage
1 : 500



Site Plan - Pr
1 : 500

Rev	Date	Name	Description
-----	------	------	-------------

STUDIO YAQUB

25 Bishop Road,
Bishopston, Bristol, BS7
8LS

Proposed Ground and First
Floor Plans

Project number 0217-03

Date 23.10.23

Drawn by MA

Checked by UY

Scale @A1 @A3 As indicated

P020

