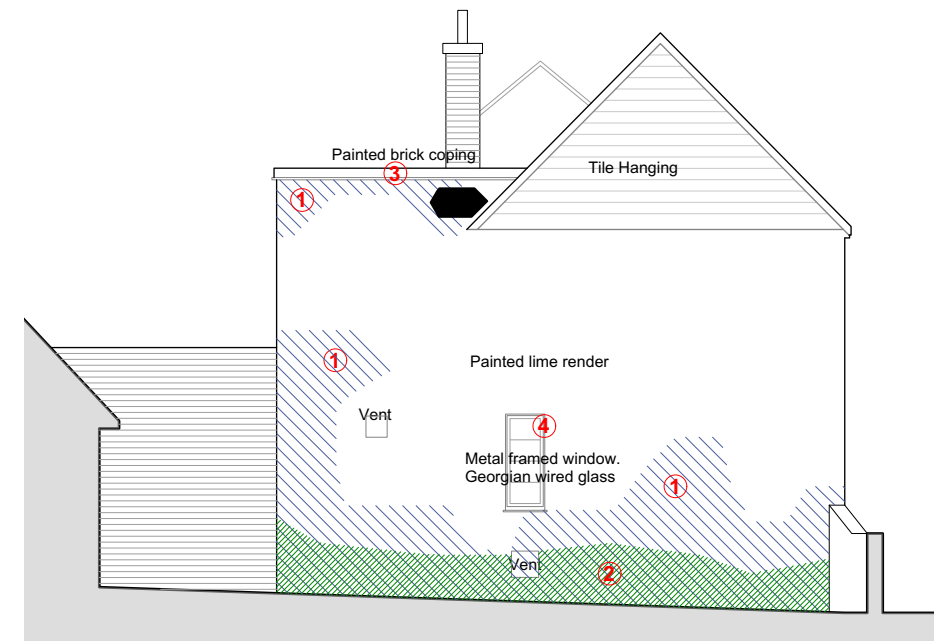
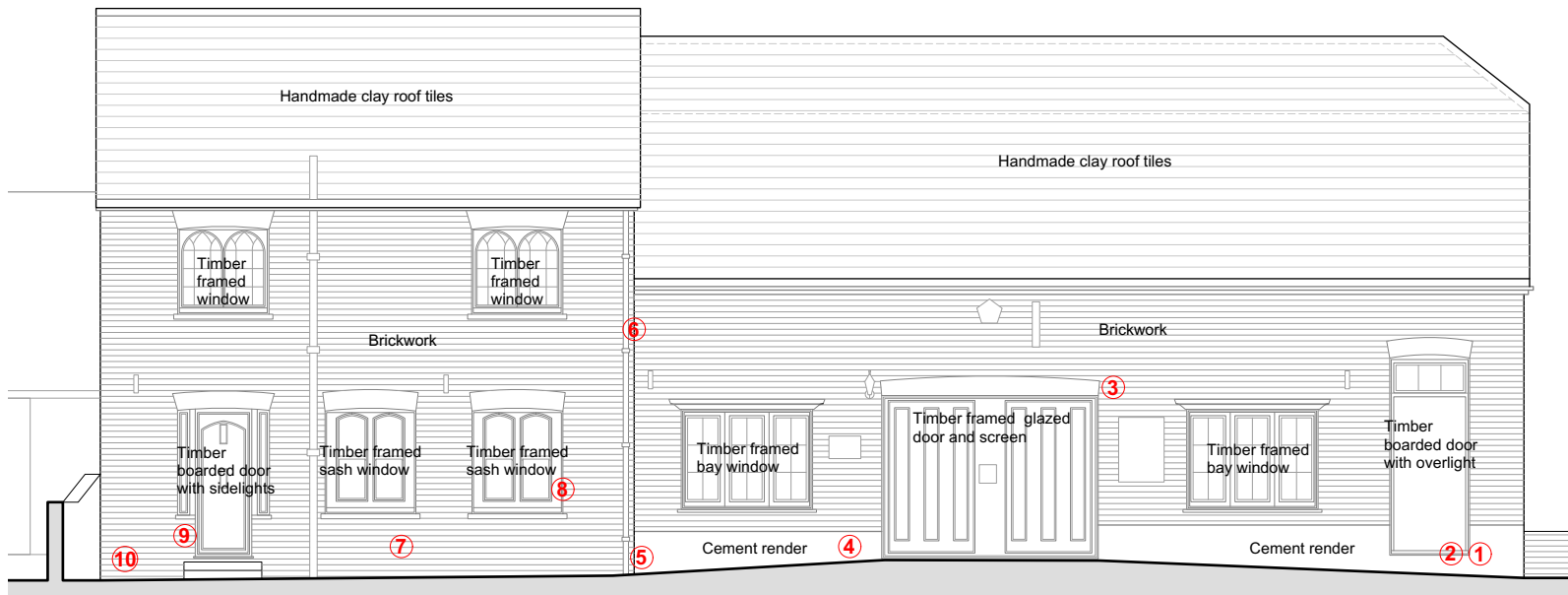


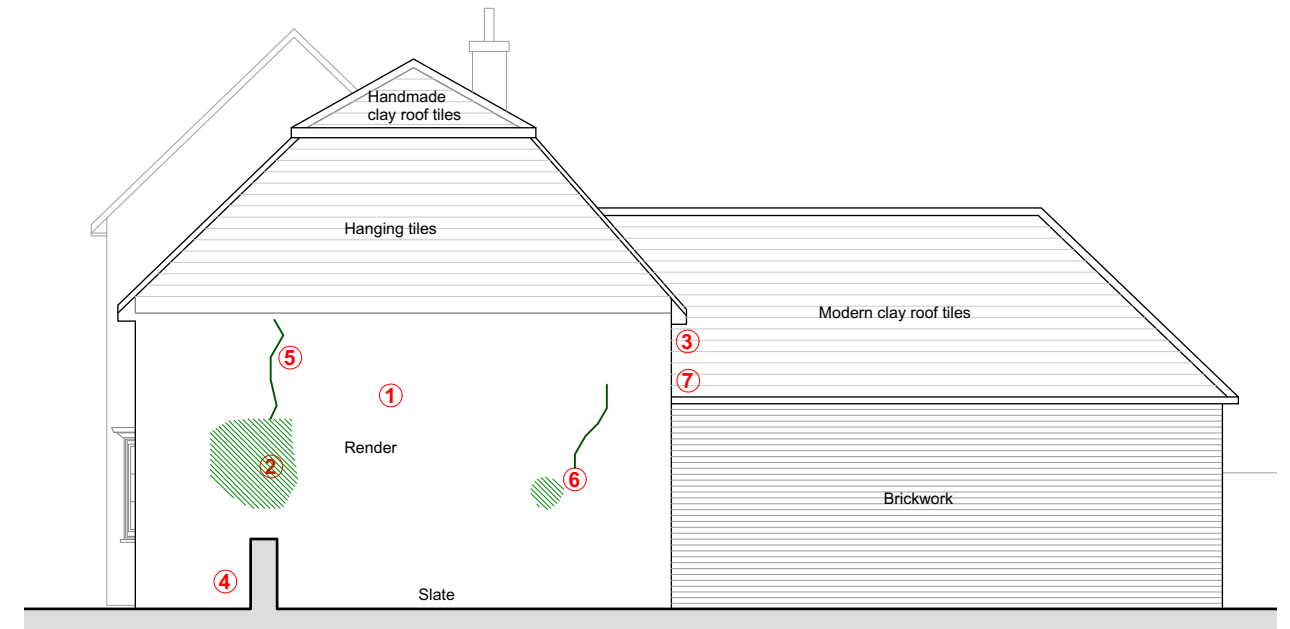
- 1 - Condition: Failed/missing pointing
Repair: Rake out and repoint with lime mortar to match existing
- 2 - Condition: 2 No. damaged bricks to corner
Repair: Piece in 2 No. new bricks to match existing
- 3 - Condition: Failed/missing pointing to bay window brickwork
Repair: Rake out and repoint with lime mortar to match existing
- 4 - Condition: Cracked window pane to reveal
Repair: Replace cracked window pane to match existing
- 5 - Condition: Failed/missing pointing
Repair: Rake out and repoint with lime mortar to match existing
- 6 - Condition: Cracked brick to lintel
Repair: Piece in new brick to lintel to match existing



- 1 - Condition: Flaking paint
Repair: Brush back and remove paint. Redecorate with breathable paint (colour to match existing) following repairs to render.
- 2 - Condition: Skim cost of render failing
Repair: Cut back to sound render. Remove failing areas back to brickwork and re-render with lime render.
- 3 - Condition: Flaking paint to brick coping
Repair: Brush back and remove paint. Redecorate with breathable paint (colour to match existing)
- 4 - Condition: Failing decorations to window and cill
Repair: Rub back and redecorate window



- 1 - Condition: Missing/cracked cement render
Repair: Patch repair cement render to match existing
- 2 - Condition: Crack to corner of concrete door step
Repair: Fill crack to door step with cementitious mortar
- 3 - Condition: Hairline crack to brickwork
Repair: Rake out and repoint crack to brickwork with lime mortar
- 4 - Condition: Damaged cement render
Repair: Patch repair cement render to match existing
- 5 - Condition: Damaged cement render to corner at low level
Repair: Patch repair cement render to match existing
- 6 - Condition: Failed joint between buildings
Repairs: Rake out and repoint joint between buildings with lime mortar to match existing
- 7 - Condition: 7 No. spalled bricks at low level
Repairs: Piece in 7No. new bricks to match existing
- 8 - Condition: Failed joint to side of window
Repairs: Repoint joint between window and brickwork with lime mortar to match existing
- 9 - Condition: Failed/missing pointing
Repair: Rake out and repoint with lime mortar
- 10 - Condition: Triangle vents to brickwork. 1 No. damaged
Repair: Piece in new triangle vent to match existing.



- 1 - Condition: Old Ivy roots on wall
Repair: Carefully remove ivy roots. Redecorate with breathable paint following removal.
- 2 - Condition: Blown render
Repair: Cut back to sound render. Remove failing areas back to brickwork and re-render with lime render. Redecorate with breathable paint following repairs to render.
- 3 - Condition: Upvc gutter and downpipe
Repair: Replace with cast iron gutter and downpipe
- 4 - Condition: 2 No. damaged bricks to plinth
Repair: Piece in 2No. new bricks to match existing
- 5 - Condition: Hairline crack
Repair: Pin back render and fill crack with lime render. Redecorate with breathable paint following repairs to render.
- 6 - Condition: Crack and small area of blown plaster
Repair: Cut back to sound render. Remove failing areas back to brickwork and re-render with lime render. Redecorate with breathable paint following repairs to render.

**A3 APPROVED AND ACCEPTED AS
STAGE 3 (SPATIAL COORDINATION)
COMPLETE**