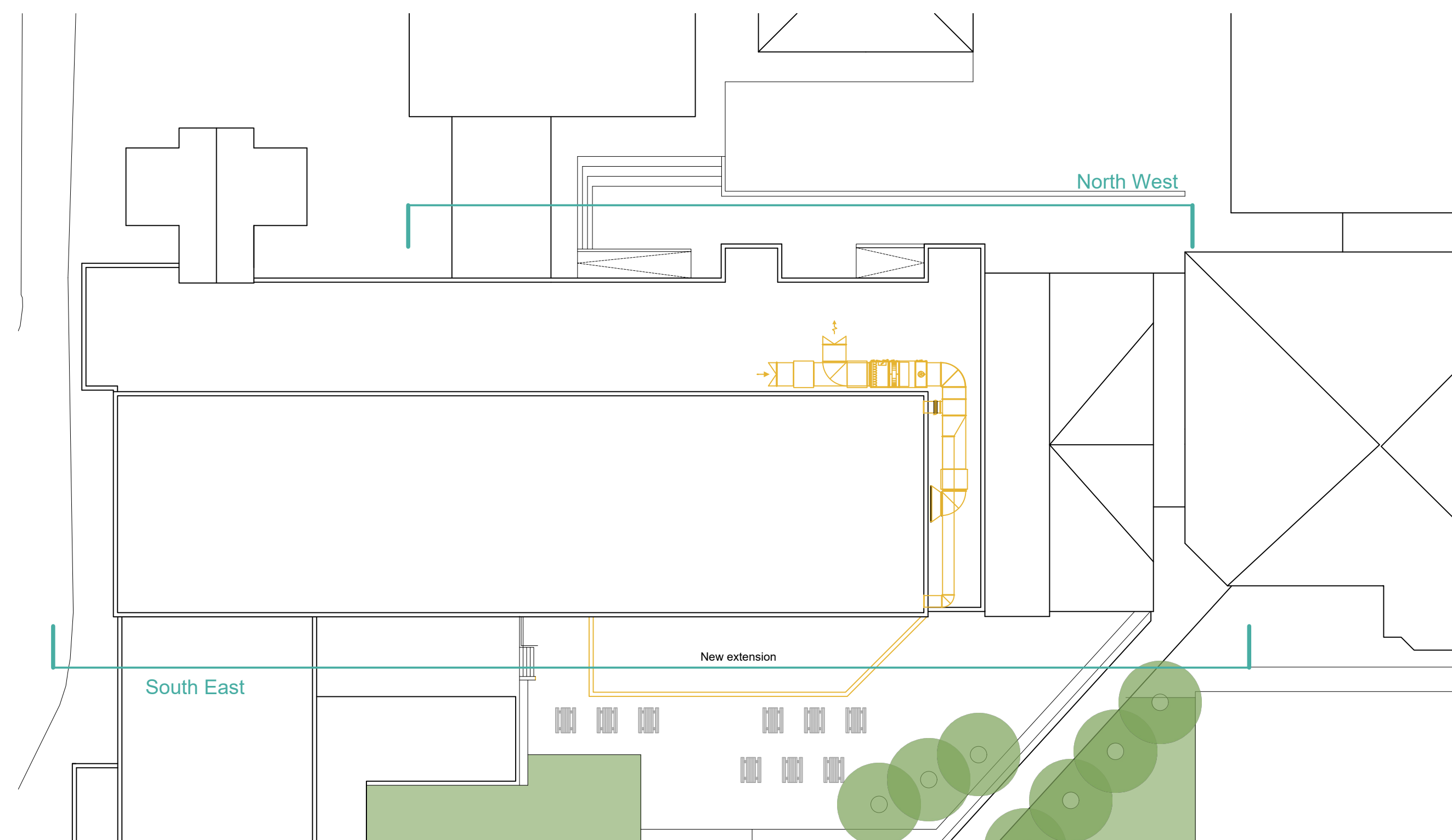
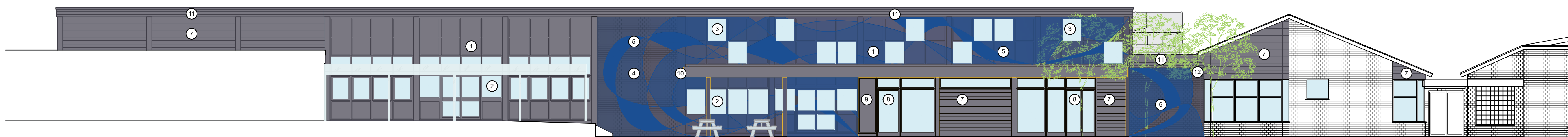


Key Plan - Site Plan | Ground  
Scale 1:250

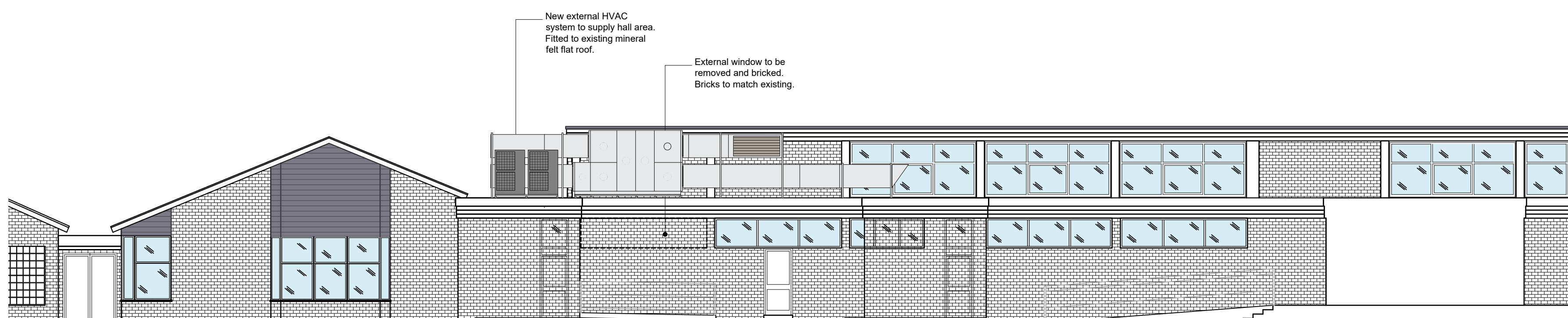


Key Plan - Site Plan | Roof  
Scale 1:250

- Material Key:**
- 1 Existing uPVC insulated cladding panel system to be painted. Colour: Dark grey
  - 2 Existing windows/doors retained in panel system, painted to match
  - 3 New high level windows proposed in panel system
  - 4 Existing brickwork to be painted. Colour: Dark grey
  - 5 Community artwork proposed over painted façade. Indicative design shown.
  - 6 New brickwork panel, painted dark grey to match
  - 7 Horizontal composite timber cladding. Colour: Dark grey
  - 8 Double glazed windows and doors. Colour: Dark grey
  - 9 PPC aluminium signage panel. Colour: Dark grey
  - 10 PPC aluminium canopy. Colour: Dark grey
  - 11 Composite timber fascia boards. Colour: Dark Grey
  - 12 Rainwater goods. Colour: Black



Proposed South East Elevation



Proposed North West Elevation

P01 Issued for Planning		07/11/23	AJ	AJ
Rev	Description	Date	CHK	Apr
305133	Scale @ A1: 1:100		Drawn By: CA	



Project:  
Witchford Village College  
Manor Road  
Witchford  
CB6 2JA

Client:  
Cambridgeshire County Council

Title:  
Proposed Elevations

Drawing Number: 305133-IWD-XX-XX-DR-A-2011			
Status:	Purpose of Issue:	Revision:	
D5	Planning	P01	