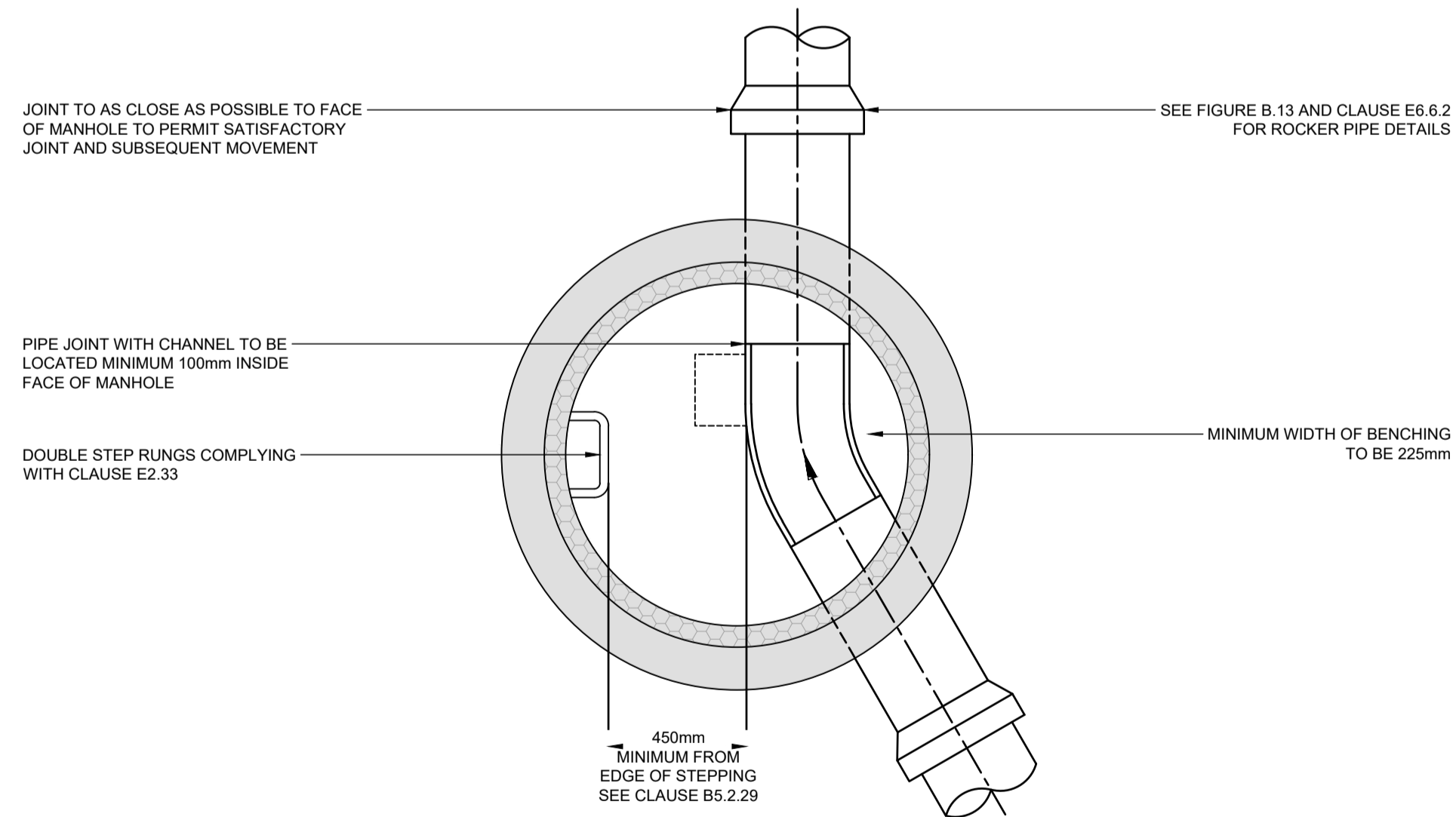
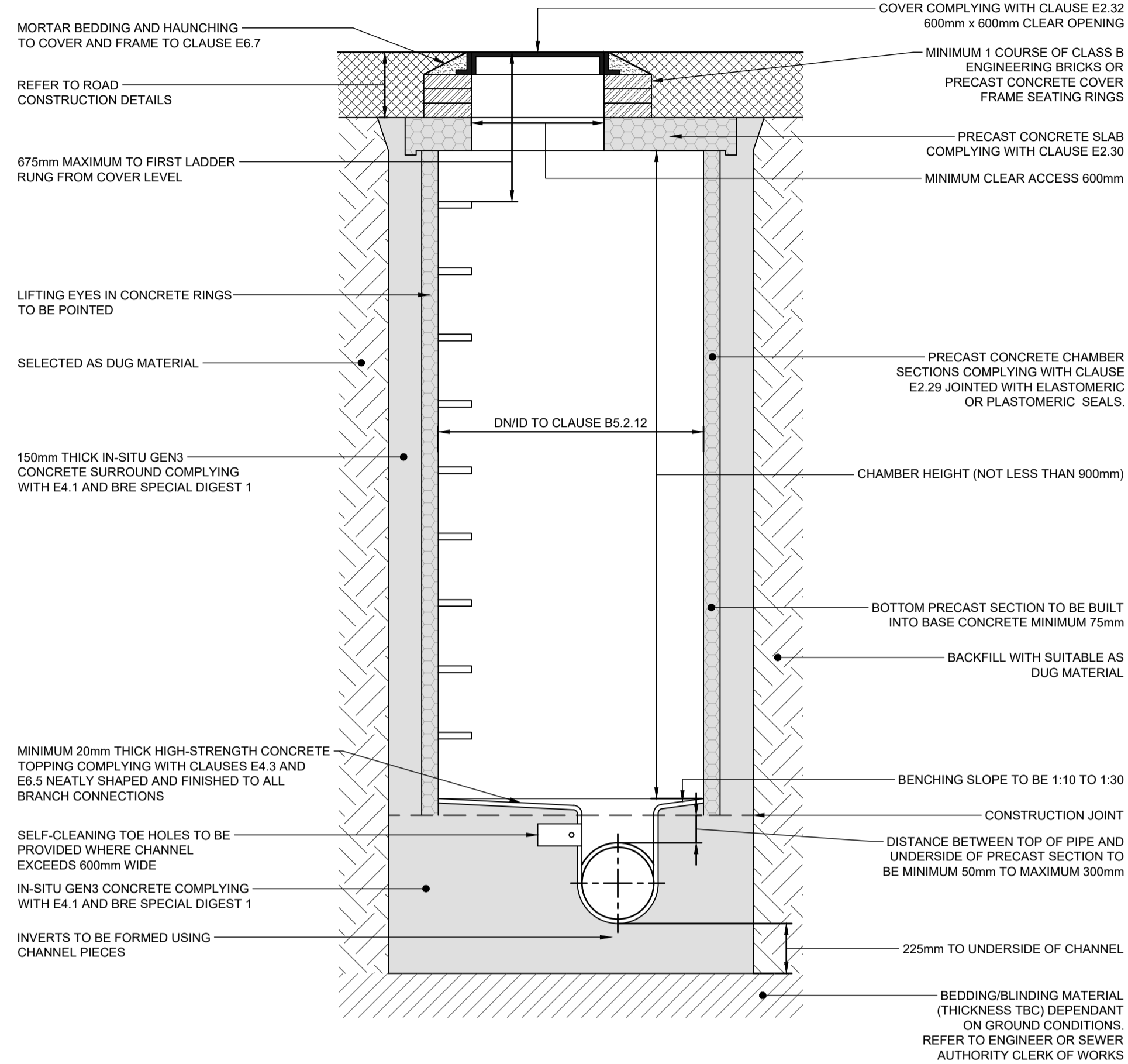
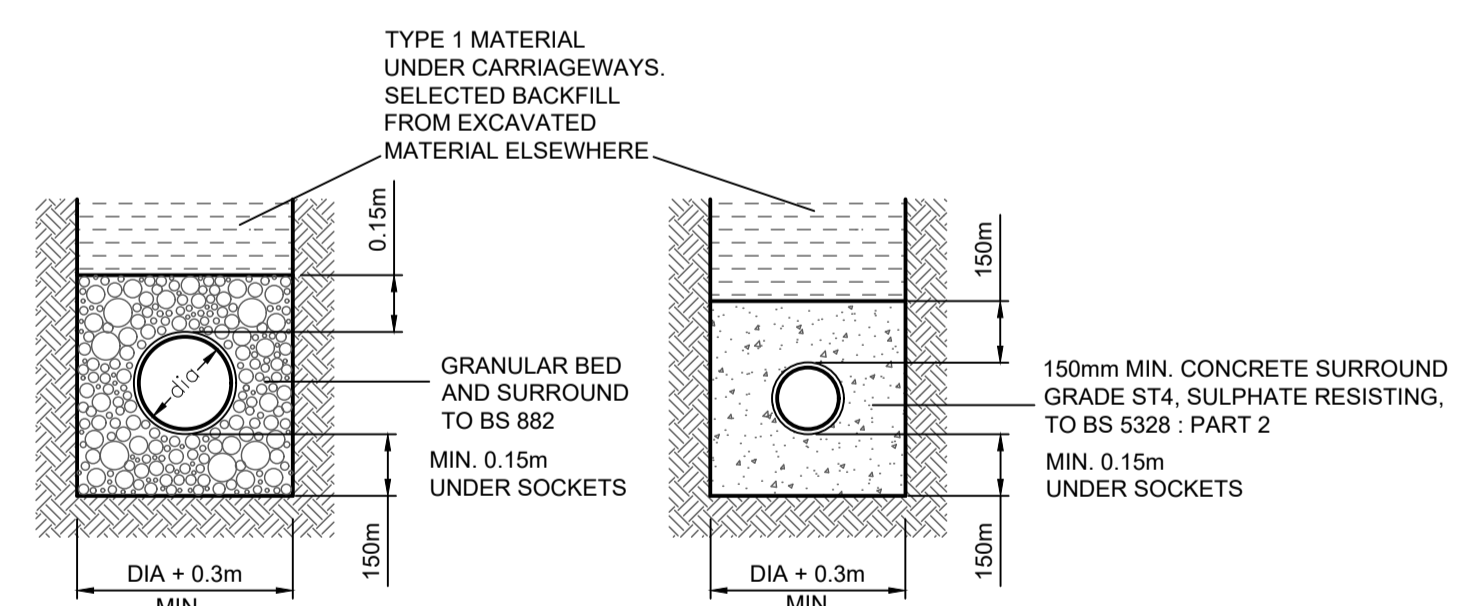
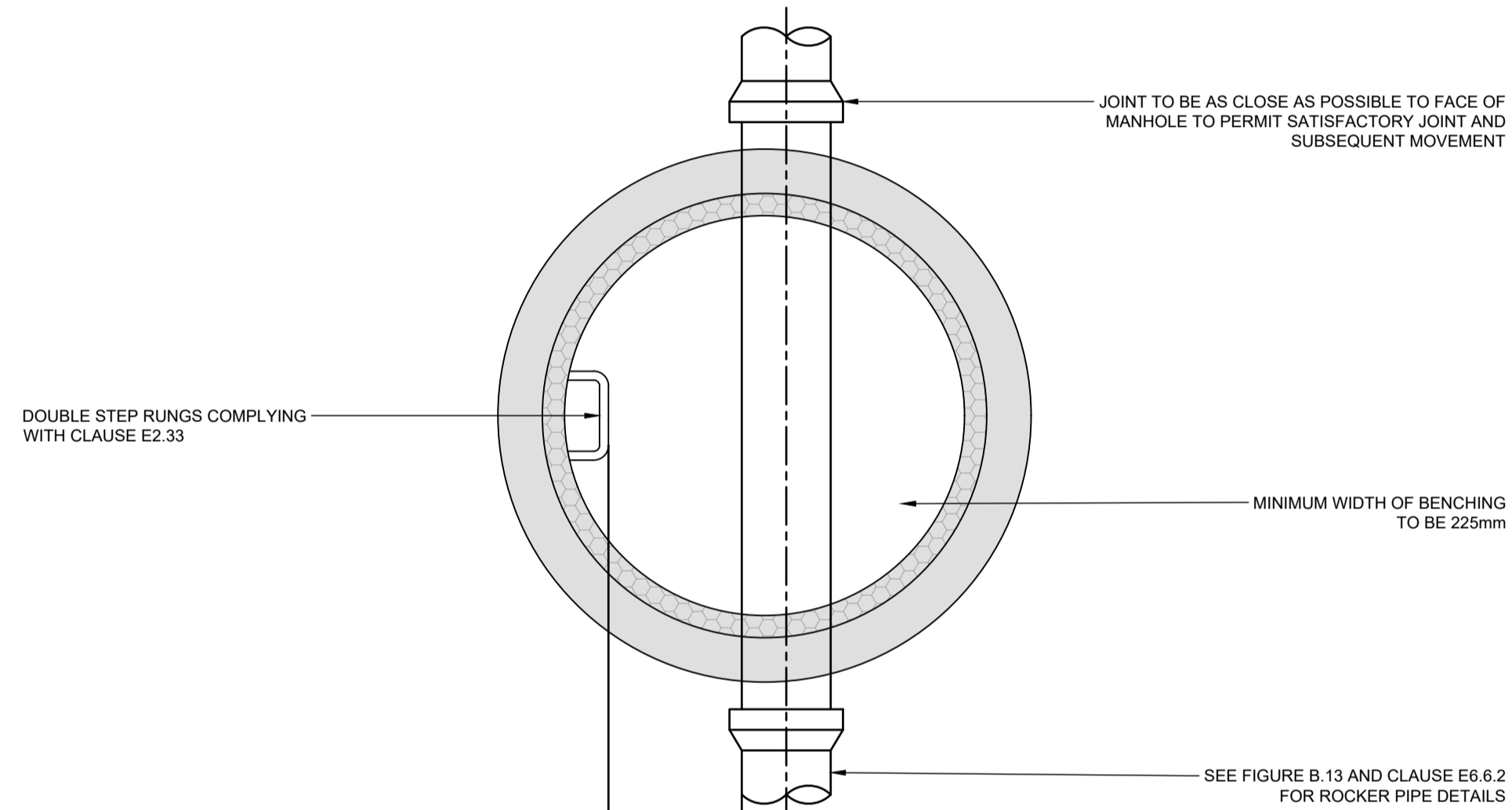
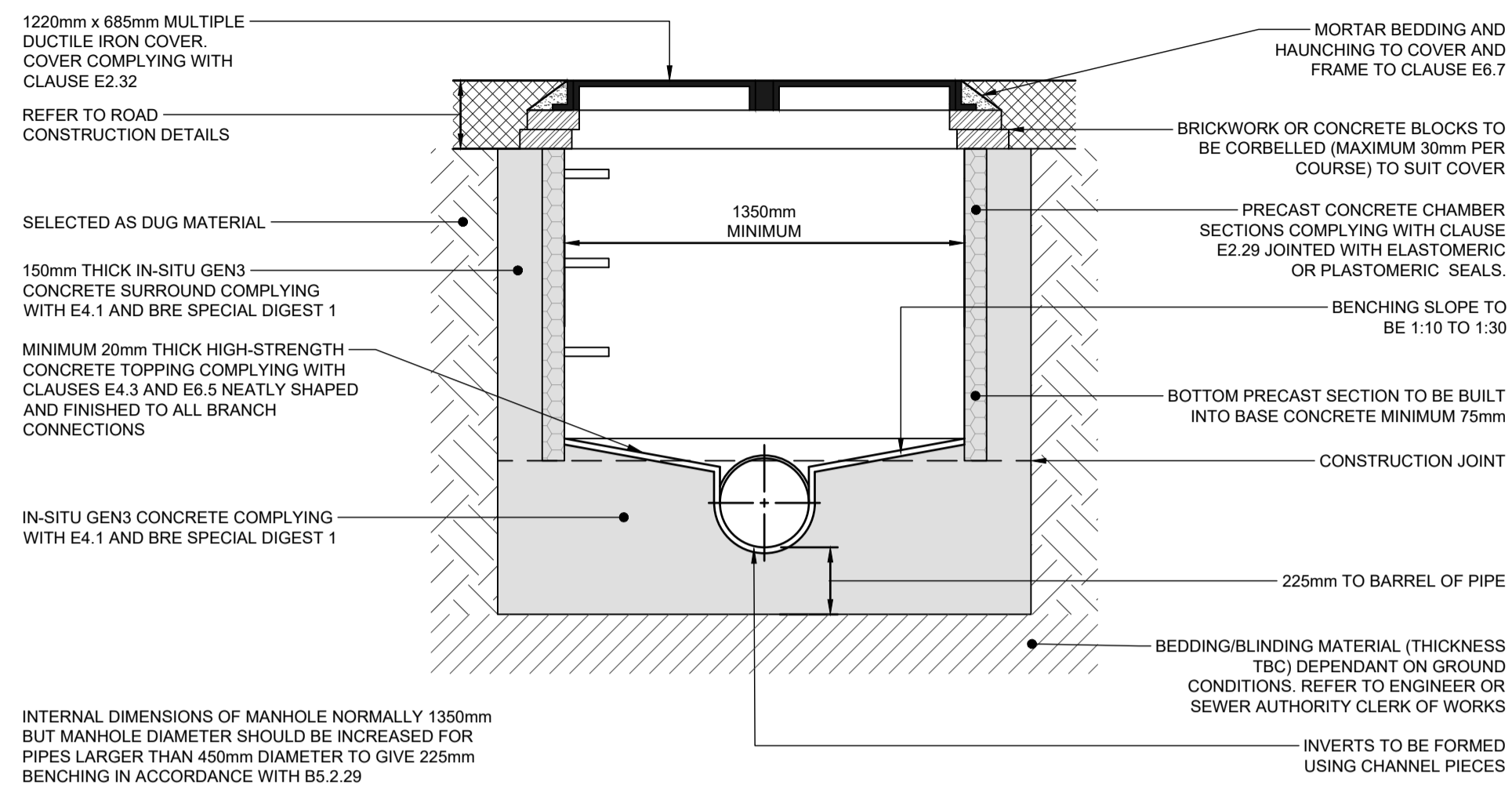


**TYPE B - TYPICAL MANHOLE DETAIL**  
**FIGURE B 10 SEWERAGE SECTOR GUIDANCE APPENDIX C - 'THE CODE'**  
 DEPTH FROM COVER LEVEL TO SOFFIT OF PIPE 1.5m TO 3m  
 RIGID MATERIAL CONSTRUCTION WITH CONCRETE SURROUND



**IMPORTANT NOTE: CAUTION**  
 ALL INFORMATION SHOWN ON THIS DRAWING FOR UNDERGROUND SERVICES/STATUTORY UNDERTAKERS' PLANT IS APPROXIMATE AND IS PROVIDED FOR THE CONTRACTOR'S INFORMATION ONLY. IT SHOULD NOT BE RELIED ON FOR EXCAVATION OR ANY OTHER WORKS PURPOSES AND CONTRACTORS MUST SATISFY THEMSELVES OF THEIR LOCATIONS PRIOR TO THE COMMENCEMENT OF WORKS.

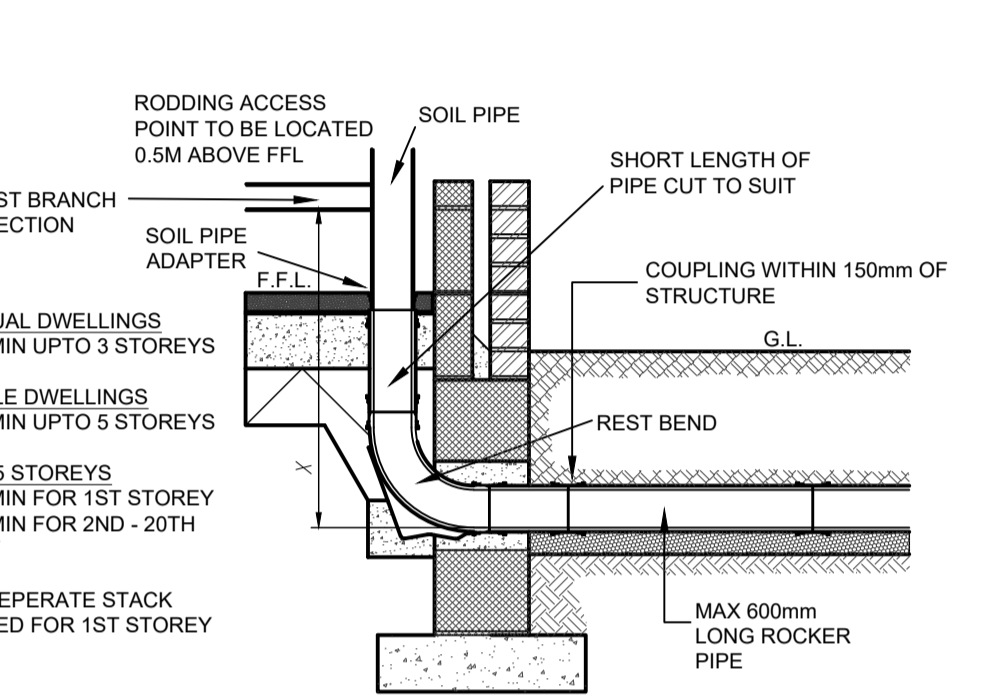
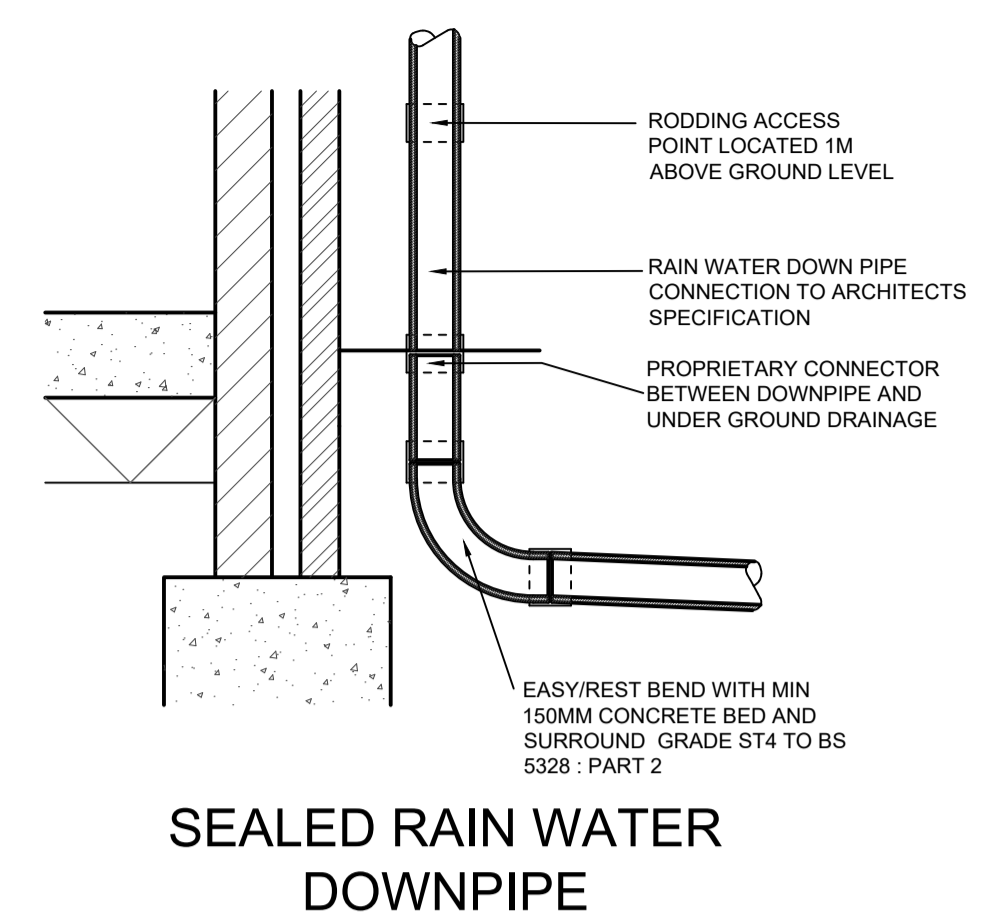
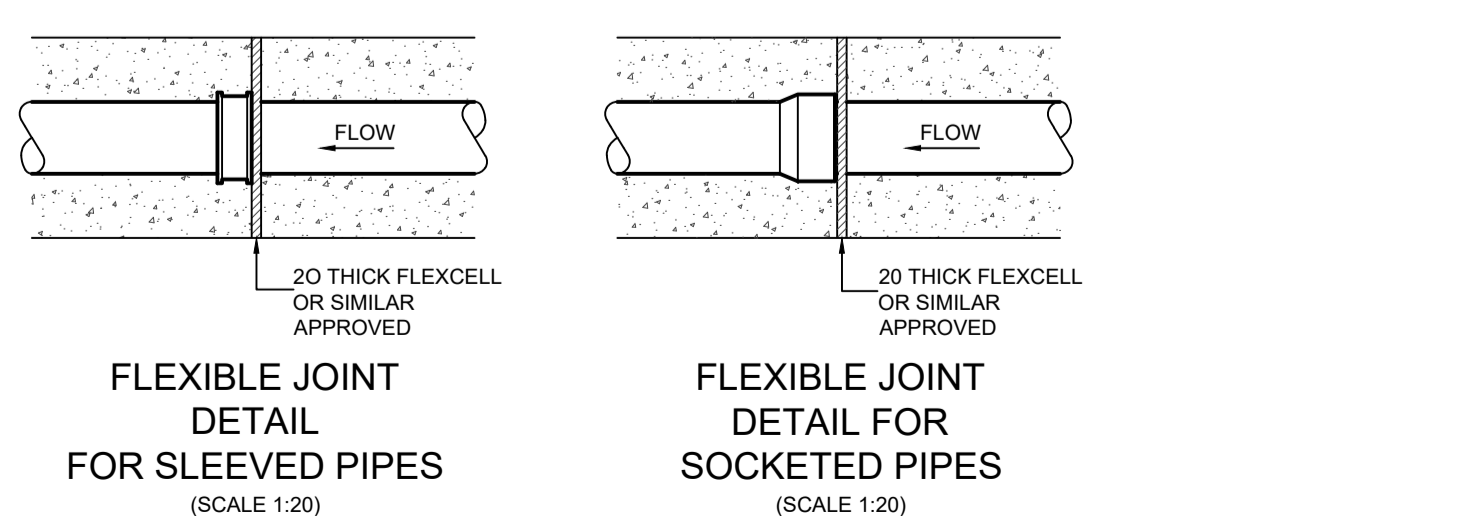
**TYPE C - TYPICAL MANHOLE DETAIL**  
**FIGURE B 15 (ALTERNATIVE) SEWERAGE SECTOR GUIDANCE APPENDIX C - 'THE CODE'**  
 DEPTH FROM COVER LEVEL TO SOFFIT OF PIPE LESS THAN 1.5m  
 MAXIMUM PIPE SIZE 450 mm DIAMETER  
 RIGID MATERIAL CONSTRUCTION WITH CONCRETE SURROUND



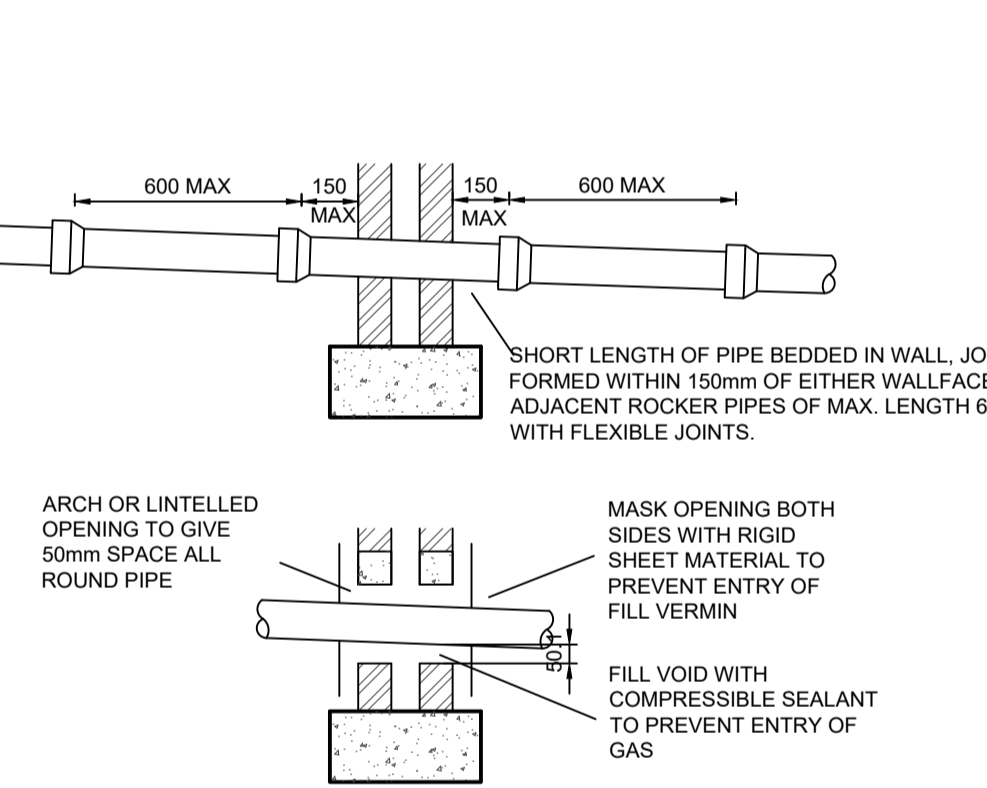
**TYPE 'S'**  
 DRAINAGE WITH MORE THAN 600mm COVER - LANDSCAPED  
 900mm COVER - ROADS  
 (UNLESS BEDDING TYPE IS STATED ON THE DRAINAGE PLANS OR SPECIFICATION)

**TYPE 'Z'**  
 DRAINAGE WITH LESS THAN 600mm COVER - LANDSCAPED  
 900mm COVER - ROADS  
 (UNLESS BEDDING TYPE IS STATED ON THE DRAINAGE PLANS OR SPECIFICATION)

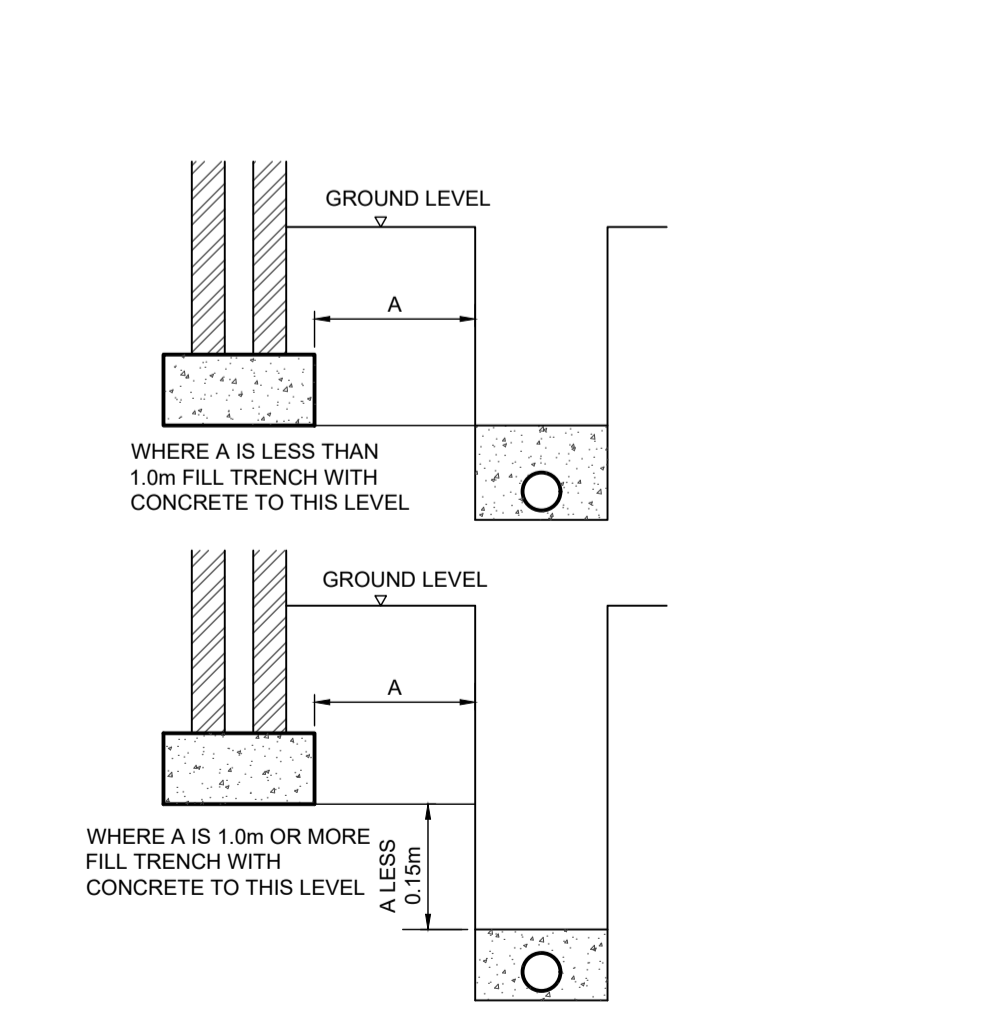
**PIPE BEDDING DETAILS IN PRIVATE AREAS**



**SOIL & VENT PIPE/STACK STACK/DURGO CONNECTION DETAIL**



**PIPES PENETRATING WALLS**



**DRAINAGE NEAR BUILDINGS**

**NOTES:**

- THIS DRAWING TO BE READ IN CONJUNCTION WITH ALL RELEVANT ARCHITECTS AND ENGINEERS DRAWINGS AND SPECIFICATIONS.
- All drainage works to be carried out in accordance with the requirements of the Local Authority, the Environment Agency and in conjunction with all relevant British Standards, Codes of Practice and any addendums as appropriate.
- Invert levels and positions of existing drains / chambers / sewers where new connections are to be made must be checked and confirmed to the Engineer prior to the commencement of any works.
- All drainage shall comply with the typical details and the requirements of BS EN 752 and Part H of the Building Regulations.

P1	04/07/2023	TENDER ISSUE	SPB
Rev	Date	Description	By
<b>PRELIMINARY</b>			
MBP Michael Barclay Partnership consulting engineers			
1 Lancaster Place London WC2E 7ED T 020 7240 1191 E london@mbp-uk.com W mbp-uk.com			
Job: SPECTRUM HOUSE CHAPMAN WAY, TUNBRIDGE WELLS, TN2 3EF			
Title: DRAINAGE DETAILS SHEET 1 OF 2			
Scale	0 A1	Date	By
1:20		JULY 2023	SPB
Drawing Number	Revision		
MBP / 8944 / 0502			P1