

General Notes

This drawing and its data are the copyright of Ewan Cameron Architects Limited and must not be used for any purpose other than that for which it is intended.

PLANNING

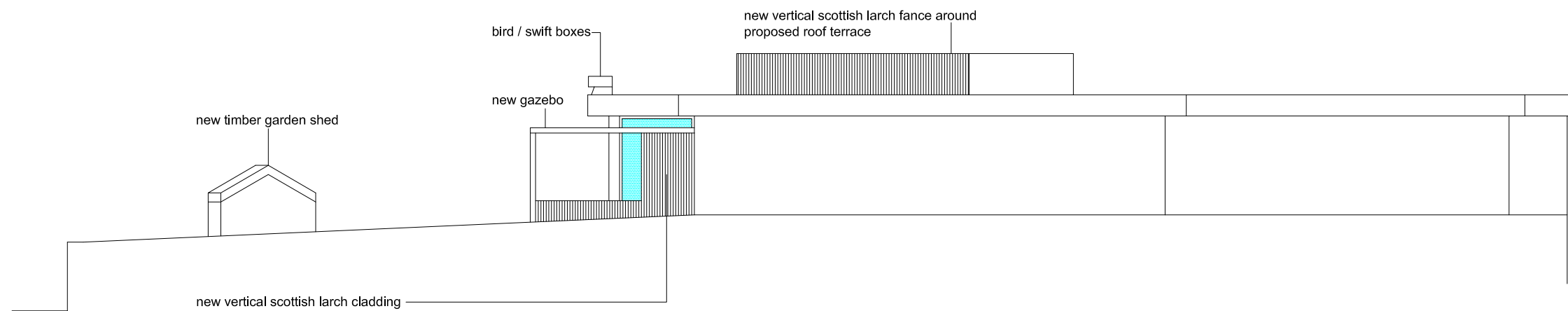
No.	Revision / Issue	Date

Ewan Cameron Architects

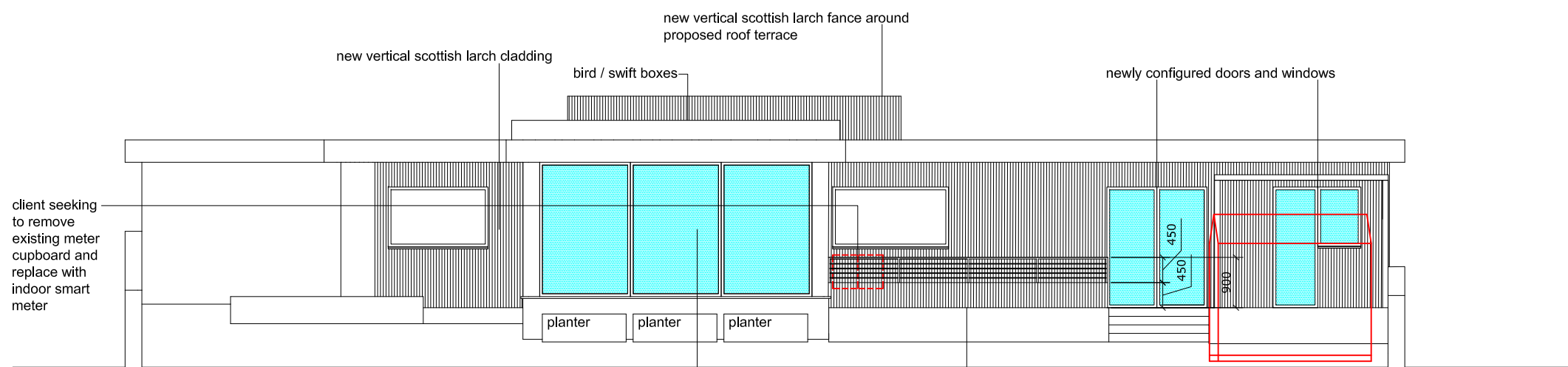
22 Montrose Street, Glasgow, G1 1RE
Tel: 07595417776
enquiries@ewancameronarchitects.com

Client
Martin Ridley

Project Toberargan	Job No. ECA-193	Date 02.10.23
Drawing Proposed Elevations	Drawn EC	Checked EC
Drawing No. P-008	Scale 1:100	Revision

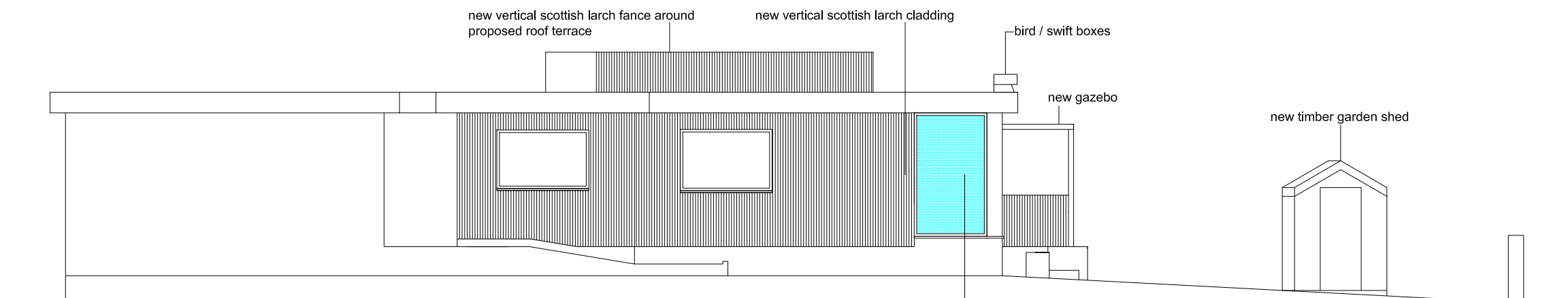


EAST ELEVATION



SOUTH ELEVATION

900mm balustrade - lower half timber clad as elevation behind, upper half infilled with stainless steel tension cables set within stainless steel frame



WEST ELEVATION

