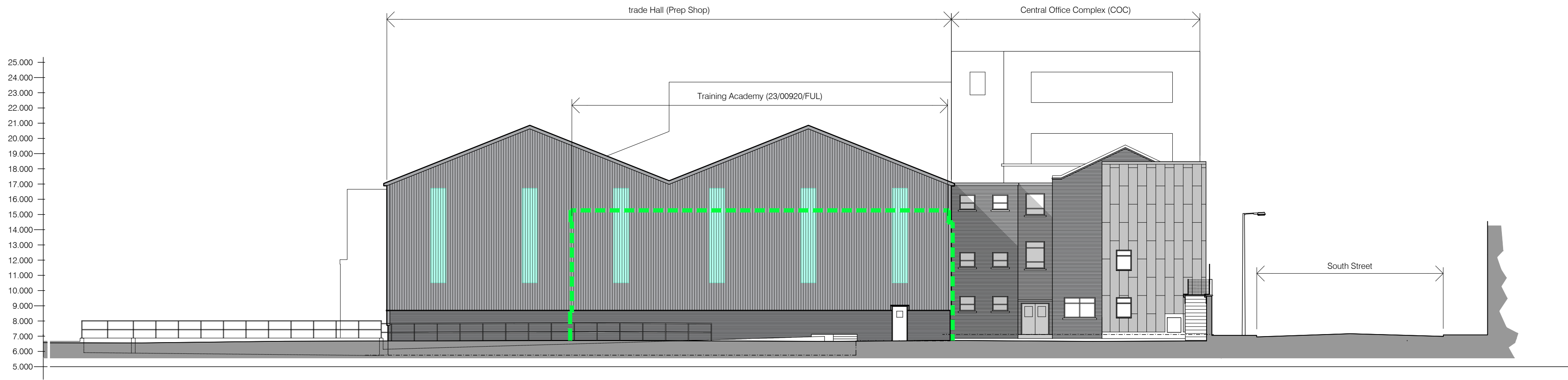
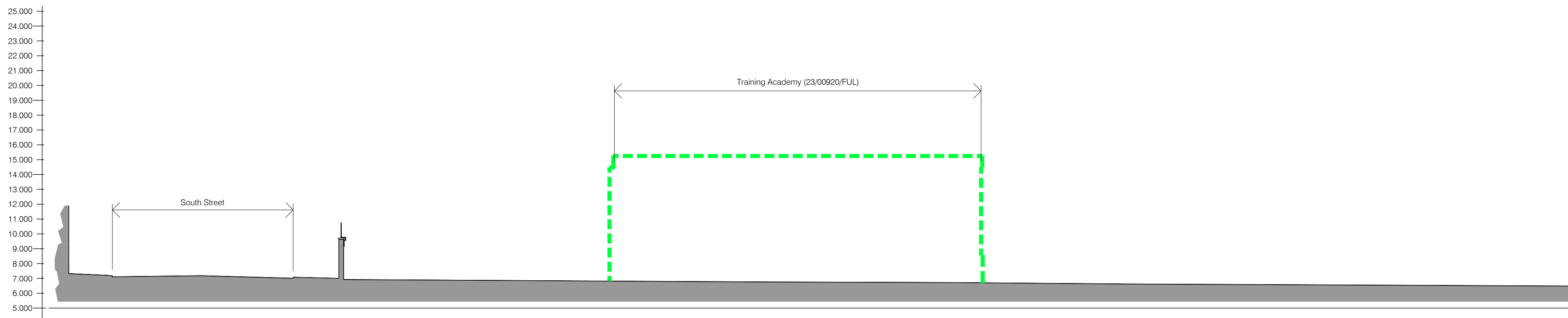




Elevation From South Street
1:200



East Elevation
1:200



West Elevation
1:200

PLEASE NOTE:
The elevation on South Street shows the proposed facade of new Training Academy under construction. This is to give a better understanding of the facility in context with its surroundings. For more detail information refer to submitted planning application refer 23/00920/FUL.

/	13.11.23	First Issue - For PLANNING	SM	CF
REV	DATE	REVISION DESCRIPTION	DRN	VER

THIS DRAWING IS COPYRIGHT © DO NOT SCALE FROM THIS DRAWING.

Arch Henderson 1919

Civil Engineers
Structural Engineers
Principal Designers
Architects
Geotechnical services
Environmental services

142 St. Vincent Street, Glasgow G2 5LA
Tel : 0141 227 3060 - Fax : 0141 248 9542
www.arch-henderson.co.uk - email : glasgow@arch-henderson.co.uk

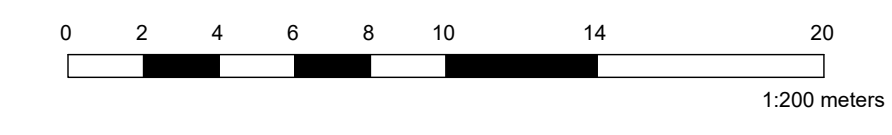
Offices in : Aberdeen, Dundee, Falkland Islands, Glasgow, Inverness, Lewick, Southampton, Storness and Thurso

PROJECT :
**BAE SYSTEMS SURFACE SHIPS LTD
TRADE HALL & ASSOCIATED WORKS**

TITLE :
**MASTERPLAN
ELEVATIONS AS EXISTING**

DRAWN : SM	DATE : SEPT 23	VERIFIED : --	APPROVED : CF
SCALE : (A1) 1:200		DRAWING STATUS : PLANNING	

DRAWING No : 225088 - 1003 REV : /



DO NOT SCALE