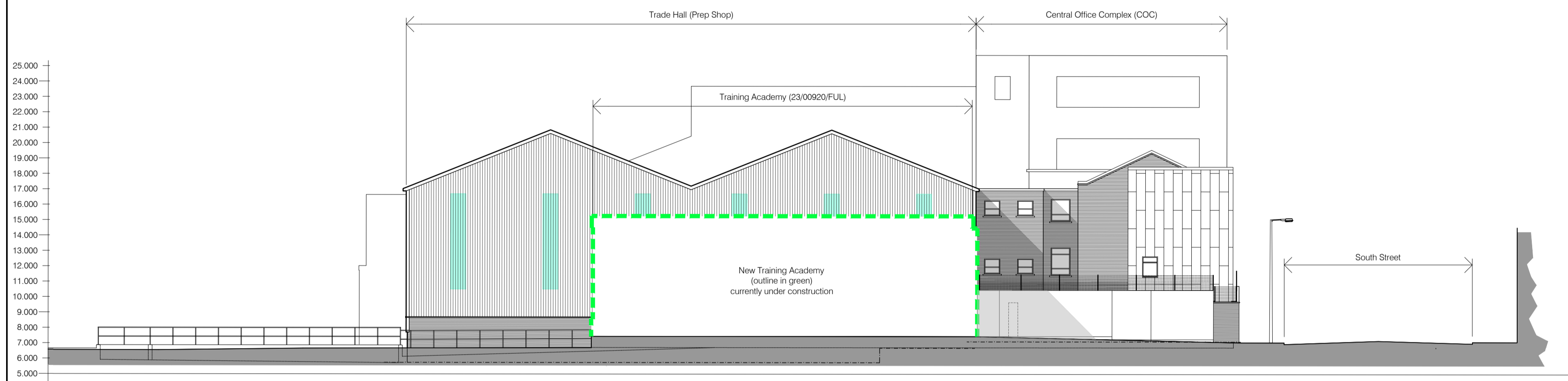
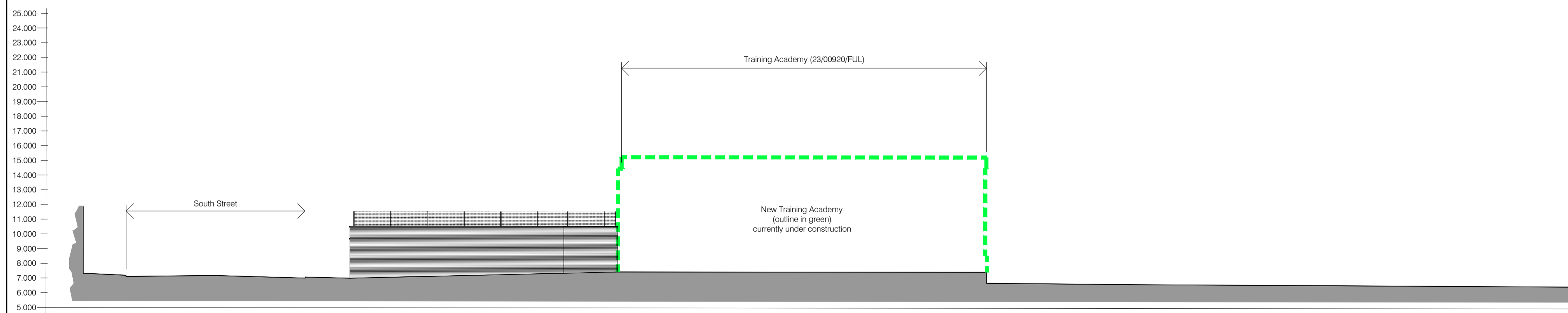




Elevation From South Street
1:200



Sectional East Elevation
1:200



West Elevation
1:200

PLEASE NOTE:
The elevation on South Street shows the proposed facade of new 'Training Academy' under construction. This is to give a better understanding of the facility in context with its surroundings. For more detail information refer to submitted planning application refer 23/00920/FUL.

REV	DATE	REVISION DESCRIPTION	DRN	VER
/	13.11.23	First Issue - For PLANNING	SM	CF

THIS DRAWING IS COPYRIGHT © DO NOT SCALE FROM THIS DRAWING.

Arch Henderson
1919

Civil Engineers
Structural Engineers
Principal Designers
Architects
Geotechnical services
Environmental services

142 St. Vincent Street, Glasgow G2 5LA
Tel : 0141 227 3060 - Fax : 0141 248 9542
www.arch-henderson.co.uk - email : glasgow@arch-henderson.co.uk

Offices in: Aberdeen, Dundee, Falkland Islands, Glasgow, Inverness, Lewick, Southampton, Storness and Thurso

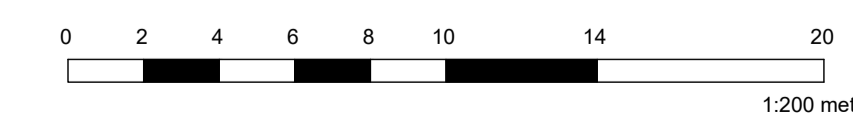
PROJECT :
**BAE SYSTEMS SURFACE SHIPS LTD
TRADE HALL & ASSOCIATED WORKS**

TITLE :
**MASTERPLAN
ELEVATIONS AS PROPOSED**

DRAWN : SM	DATE : SEPT 23	VERIFIED : --	APPROVED : CF
---------------	-------------------	------------------	------------------

SCALE : (A1)
1:200
DRAWING STATUS :
PLANNING

DRAWING No : 225088 - 1014
REV : /



DO NOT SCALE