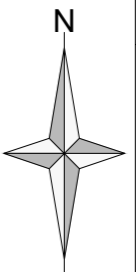
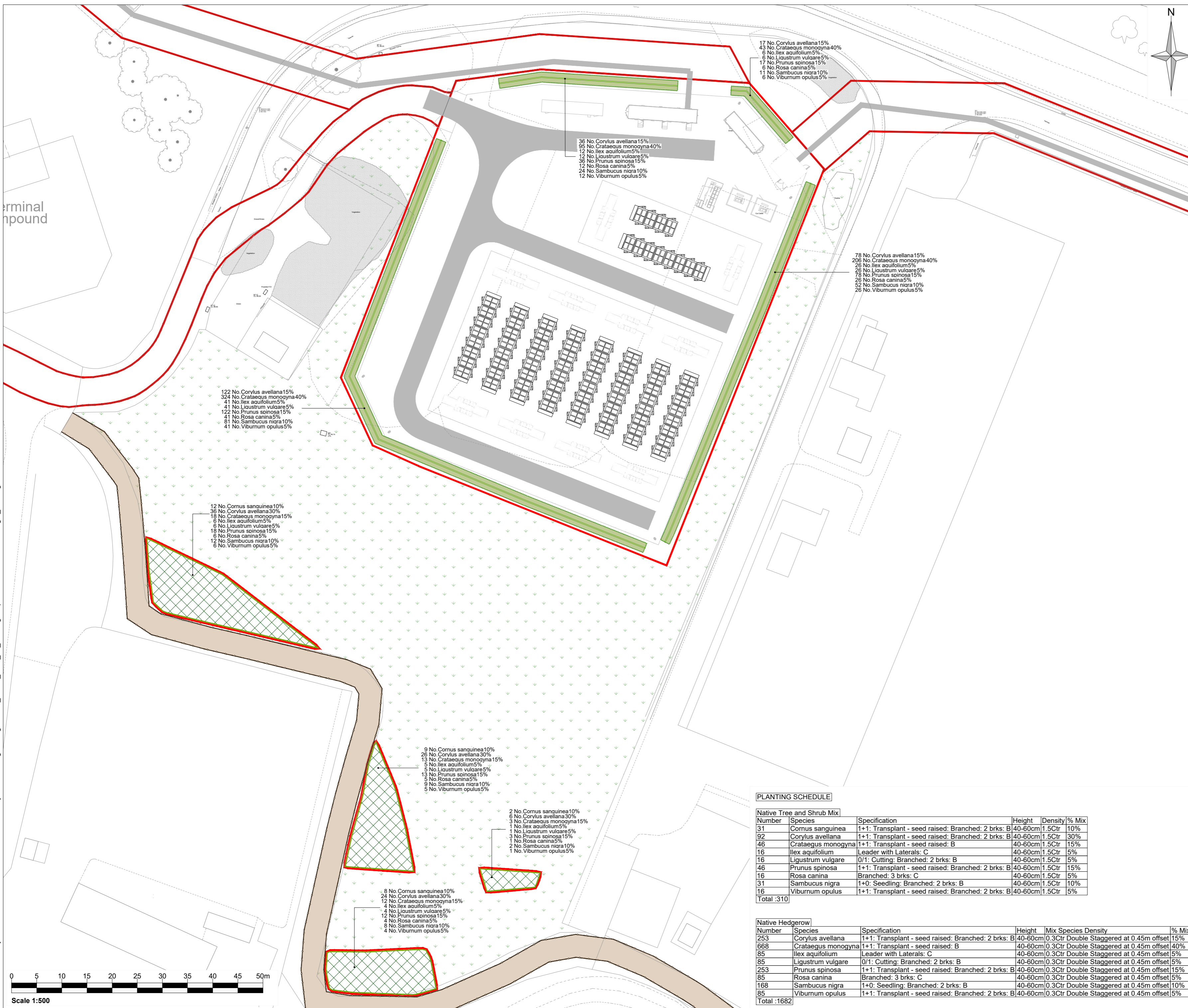


29/11/2023

Neuair\SRHS-EP\Projects\08525 - Pivot Power LLP\0004 - BredburyTech\ADwgs\Wking\231108\_08525\_0004\_29\_Planting Proposals - Condition Discharge\_HD.dwg



**Notes:**

- LOCATIONS OF ALL PROPOSED PLANTING AREAS AND TREE LOCATIONS SUBJECT TO CONFIRMATION OF SERVICE CORRIDORS AND RELEVANT EASEMENTS.
- USE OF PROPRIETARY ROOT BARRIER TO SIDE OF PLANTING AREAS OR USE OF PROPRIETARY ROOT TRAINER MAY BE NEEDED WHERE PLANTS LIE CLOSE TO SERVICES. TO BE VERIFIED BY ENGINEERS BASED ON SITE CONDITIONS.
- REFER TO ENGINEERS SPECIFICATION FOR HARD PAVED AREAS AND ROAD SURFACE DETAILS.

**Legend:**

- APPLICATION BOUNDARY
- NEWLY CONSTRUCTED PUBLIC ACCESS ROUTE SOUTH OF SITE
- EXISTING INDICATIVE FENCE
- EXISTING GRASSLAND
- PROPOSED NATIVE TREE AND SHRUB PLANTING
- PROPOSED NATIVE HEDGEROW

122 No. *Corvus avellana* 15%  
 324 No. *Crataegus monogyna* 40%  
 41 No. *Ilex aquifolium* 5%  
 41 No. *Ligustrum vulgare* 5%  
 122 No. *Prunus spinosa* 15%  
 41 No. *Rosa canina* 5%  
 81 No. *Sambucus nigra* 10%  
 41 No. *Viburnum opulus* 5%

12 No. *Cornus sanguinea* 10%  
 36 No. *Corvus avellana* 30%  
 18 No. *Crataegus monogyna* 15%  
 6 No. *Ilex aquifolium* 5%  
 6 No. *Ligustrum vulgare* 5%  
 18 No. *Prunus spinosa* 15%  
 6 No. *Rosa canina* 5%  
 12 No. *Sambucus nigra* 10%  
 6 No. *Viburnum opulus* 5%

9 No. *Cornus sanguinea* 10%  
 26 No. *Corvus avellana* 30%  
 13 No. *Crataegus monogyna* 15%  
 5 No. *Ilex aquifolium* 5%  
 5 No. *Ligustrum vulgare* 5%  
 13 No. *Prunus spinosa* 15%  
 5 No. *Rosa canina* 5%  
 9 No. *Sambucus nigra* 10%  
 5 No. *Viburnum opulus* 5%

8 No. *Cornus sanguinea* 10%  
 24 No. *Corvus avellana* 30%  
 12 No. *Crataegus monogyna* 15%  
 4 No. *Ilex aquifolium* 5%  
 4 No. *Ligustrum vulgare* 5%  
 12 No. *Prunus spinosa* 15%  
 4 No. *Rosa canina* 5%  
 8 No. *Sambucus nigra* 10%  
 4 No. *Viburnum opulus* 5%

2 No. *Cornus sanguinea* 10%  
 6 No. *Corvus avellana* 30%  
 3 No. *Crataegus monogyna* 15%  
 1 No. *Ilex aquifolium* 5%  
 1 No. *Ligustrum vulgare* 5%  
 3 No. *Prunus spinosa* 15%  
 1 No. *Rosa canina* 5%  
 2 No. *Sambucus nigra* 10%  
 1 No. *Viburnum opulus* 5%

17 No. *Corvus avellana* 15%  
 43 No. *Crataegus monogyna* 40%  
 6 No. *Ilex aquifolium* 5%  
 6 No. *Ligustrum vulgare* 5%  
 17 No. *Prunus spinosa* 15%  
 6 No. *Rosa canina* 5%  
 11 No. *Sambucus nigra* 10%  
 6 No. *Viburnum opulus* 5%

36 No. *Corvus avellana* 15%  
 95 No. *Crataegus monogyna* 40%  
 12 No. *Ilex aquifolium* 5%  
 12 No. *Ligustrum vulgare* 5%  
 36 No. *Prunus spinosa* 15%  
 12 No. *Rosa canina* 5%  
 24 No. *Sambucus nigra* 10%  
 12 No. *Viburnum opulus* 5%

78 No. *Corvus avellana* 15%  
 206 No. *Crataegus monogyna* 40%  
 26 No. *Ilex aquifolium* 5%  
 26 No. *Ligustrum vulgare* 5%  
 78 No. *Prunus spinosa* 15%  
 26 No. *Rosa canina* 5%  
 52 No. *Sambucus nigra* 10%  
 26 No. *Viburnum opulus* 5%

**PLANTING SCHEDULE**

Native Tree and Shrub Mix						
Number	Species	Specification	Height	Density	% Mix	
31	<i>Cornus sanguinea</i>	1+1: Transplant - seed raised: Branched: 2 brks: B	40-60cm	1.5Ctr	10%	
92	<i>Corylus avellana</i>	1+1: Transplant - seed raised: Branched: 2 brks: B	40-60cm	1.5Ctr	30%	
46	<i>Crataegus monogyna</i>	1+1: Transplant - seed raised: Branched: 2 brks: B	40-60cm	1.5Ctr	15%	
16	<i>Ilex aquifolium</i>	Leader with Laterals: C	40-60cm	1.5Ctr	5%	
16	<i>Ligustrum vulgare</i>	0/1: Cutting: Branched: 2 brks: B	40-60cm	1.5Ctr	5%	
46	<i>Prunus spinosa</i>	1+1: Transplant - seed raised: Branched: 2 brks: B	40-60cm	1.5Ctr	15%	
16	<i>Rosa canina</i>	Branched: 3 brks: C	40-60cm	1.5Ctr	5%	
31	<i>Sambucus nigra</i>	1+0: Seedling: Branched: 2 brks: B	40-60cm	1.5Ctr	10%	
16	<i>Viburnum opulus</i>	1+1: Transplant - seed raised: Branched: 2 brks: B	40-60cm	1.5Ctr	5%	
Total :310						

Native Hedgerow						
Number	Species	Specification	Height	Mix Species Density	% Mix	
253	<i>Corylus avellana</i>	1+1: Transplant - seed raised: Branched: 2 brks: B	40-60cm	0.3Ctr Double Staggered at 0.45m offset	15%	
668	<i>Crataegus monogyna</i>	1+1: Transplant - seed raised: Branched: 2 brks: B	40-60cm	0.3Ctr Double Staggered at 0.45m offset	40%	
85	<i>Ilex aquifolium</i>	Leader with Laterals: C	40-60cm	0.3Ctr Double Staggered at 0.45m offset	5%	
85	<i>Ligustrum vulgare</i>	0/1: Cutting: Branched: 2 brks: B	40-60cm	0.3Ctr Double Staggered at 0.45m offset	5%	
253	<i>Prunus spinosa</i>	1+1: Transplant - seed raised: Branched: 2 brks: B	40-60cm	0.3Ctr Double Staggered at 0.45m offset	15%	
85	<i>Rosa canina</i>	Branched: 3 brks: C	40-60cm	0.3Ctr Double Staggered at 0.45m offset	5%	
168	<i>Sambucus nigra</i>	1+0: Seedling: Branched: 2 brks: B	40-60cm	0.3Ctr Double Staggered at 0.45m offset	10%	
85	<i>Viburnum opulus</i>	1+1: Transplant - seed raised: Branched: 2 brks: B	40-60cm	0.3Ctr Double Staggered at 0.45m offset	5%	
Total :1682						

Rev	Amendments	Date	By	Chk	Auth



www.slrconsulting.com

Drawing Status & Suitability Code  
**Planning**

Client  
**Pivot Power**

Project  
**Bredbury Substation Battery**

Drawing Title  
**Landscape Proposals :  
 Consented Compound Layout**

Scale <b>1:500</b>	@ A2	SLR Project No. <b>405.064963.00001</b>
Designed <b>HD</b>	Drawn <b>HD</b>	Checked <b>SM</b>
Date <b>NOV 2023</b>	Date <b>NOV 2023</b>	Date <b>NOV 2023</b>
Date <b>NOV 2023</b>	Date <b>NOV 2023</b>	Date <b>NOV 2023</b>
Drawing Number <b>405.064963.00001.001</b>	Rev. <b>0</b>	