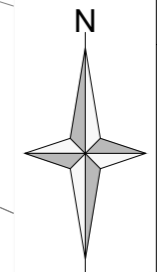
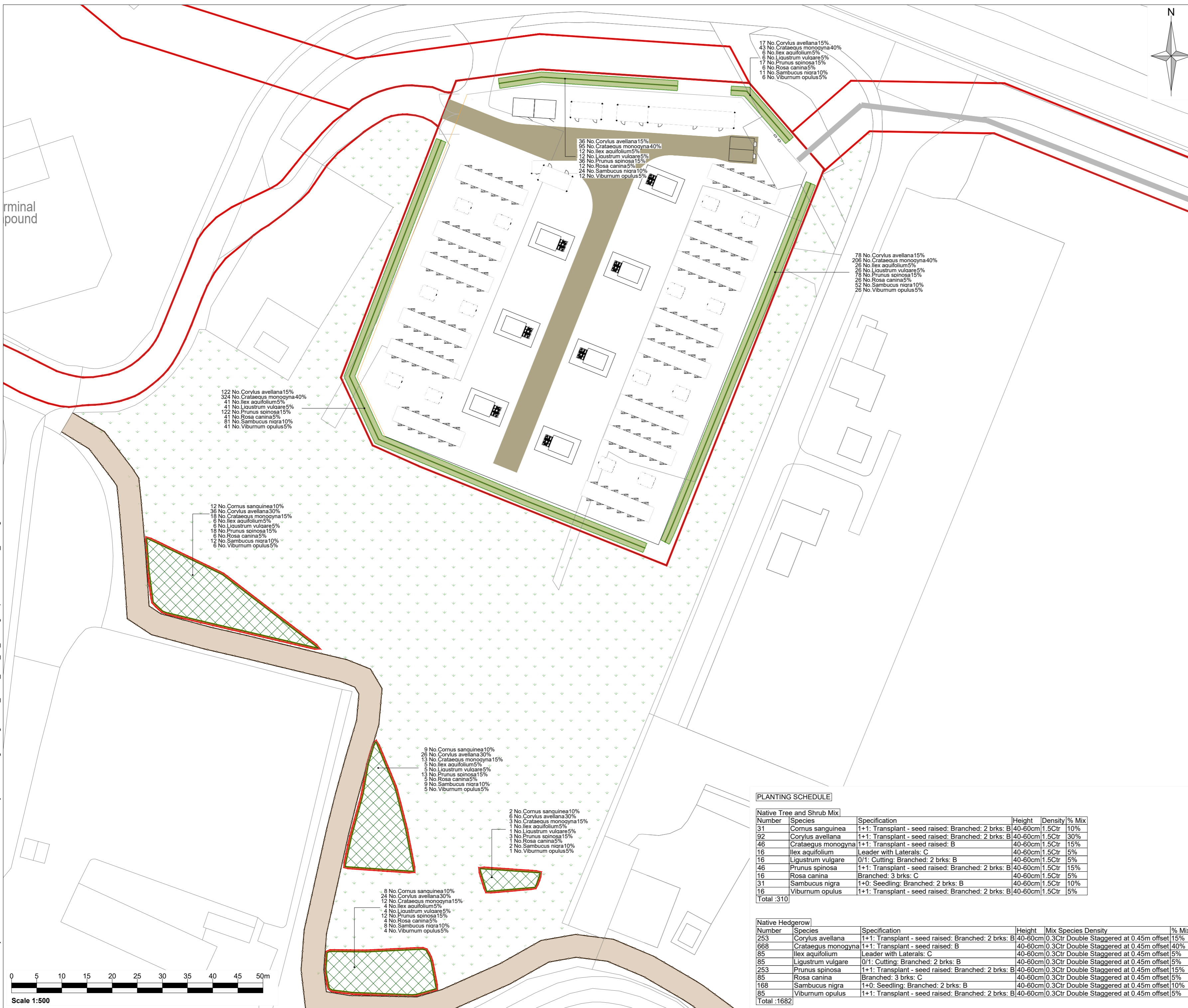


29/11/2023

Neuair\SHRFS-EP\Projects\08525 - Pivot Power LLP\004 - BredburyTech\LADwgs\Wking\231108\_08525\_0004\_29\_Planting Proposals Section T3\_HD.dwg



- Notes:**
- LOCATIONS OF ALL PROPOSED PLANTING AREAS AND TREE LOCATIONS SUBJECT TO CONFIRMATION OF SERVICE CORRIDORS AND RELEVANT EASEMENTS.
  - USE OF PROPRIETARY ROOT BARRIER TO SIDE OF PLANTING AREAS OR USE OF PROPRIETARY ROOT TRAINER MAY BE NEEDED WHERE PLANTS LIE CLOSE TO SERVICES; TO BE VERIFIED BY ENGINEERS BASED ON SITE CONDITIONS.
  - REFER TO ENGINEERS SPECIFICATION FOR HARD PAVED AREAS AND ROAD SURFACE DETAILS.
  - DRAWING DETAILS AND DIMENSIONS FOR PLANNING PURPOSES ONLY.

- Legend:**
- APPLICATION BOUNDARY
  - NEWLY CONSTRUCTED PUBLIC ACCESS ROUTE SOUTH OF SITE
  - EXISTING INDICATIVE FENCE
  - EXISTING GRASSLAND
  - PROPOSED NATIVE TREE AND SHRUB PLANTING
  - PROPOSED NATIVE HEDGEROW



**PLANTING SCHEDULE**

Native Tree and Shrub Mix						
Number	Species	Specification	Height	Density	% Mix	
31	<i>Cornus sanguinea</i>	1+1: Transplant - seed raised: Branched: 2 brks: B	40-60cm	1.5Ctr	10%	
92	<i>Corylus avellana</i>	1+1: Transplant - seed raised: Branched: 2 brks: B	40-60cm	1.5Ctr	30%	
46	<i>Crataegus monogyna</i>	1+1: Transplant - seed raised: Branched: 2 brks: B	40-60cm	1.5Ctr	15%	
16	<i>Ilex aquifolium</i>	Leader with Laterals: C	40-60cm	1.5Ctr	5%	
16	<i>Ligustrum vulgare</i>	0/1: Cutting: Branched: 2 brks: B	40-60cm	1.5Ctr	5%	
46	<i>Prunus spinosa</i>	1+1: Transplant - seed raised: Branched: 2 brks: B	40-60cm	1.5Ctr	15%	
16	<i>Rosa canina</i>	Branched: 3 brks: C	40-60cm	1.5Ctr	5%	
31	<i>Sambucus nigra</i>	1+0: Seedling: Branched: 2 brks: B	40-60cm	1.5Ctr	10%	
16	<i>Viburnum opulus</i>	1+1: Transplant - seed raised: Branched: 2 brks: B	40-60cm	1.5Ctr	5%	
<b>Total :310</b>						

Native Hedgerow						
Number	Species	Specification	Height	Mix Species Density	% Mix	
253	<i>Corylus avellana</i>	1+1: Transplant - seed raised: Branched: 2 brks: B	40-60cm	0.3Ctr Double Staggered at 0.45m offset	15%	
668	<i>Crataegus monogyna</i>	1+1: Transplant - seed raised: Branched: 2 brks: B	40-60cm	0.3Ctr Double Staggered at 0.45m offset	40%	
85	<i>Ilex aquifolium</i>	Leader with Laterals: C	40-60cm	0.3Ctr Double Staggered at 0.45m offset	5%	
85	<i>Ligustrum vulgare</i>	0/1: Cutting: Branched: 2 brks: B	40-60cm	0.3Ctr Double Staggered at 0.45m offset	5%	
253	<i>Prunus spinosa</i>	1+1: Transplant - seed raised: Branched: 2 brks: B	40-60cm	0.3Ctr Double Staggered at 0.45m offset	15%	
85	<i>Rosa canina</i>	Branched: 3 brks: C	40-60cm	0.3Ctr Double Staggered at 0.45m offset	5%	
168	<i>Sambucus nigra</i>	1+0: Seedling: Branched: 2 brks: B	40-60cm	0.3Ctr Double Staggered at 0.45m offset	10%	
85	<i>Viburnum opulus</i>	1+1: Transplant - seed raised: Branched: 2 brks: B	40-60cm	0.3Ctr Double Staggered at 0.45m offset	5%	
<b>Total :1682</b>						

Rev	Amendments	Date	By	Chk	Auth



Drawing Status & Suitability Code  
**Planning**

Client  
**Pivot Power**

Project  
**Bredbury Substation Battery**

Drawing Title  
**Landscape Proposals :  
 Proposed Amended Compound Layout**

Scale <b>1:500</b>	Drawn <b>HD</b>	SLR Project No. <b>405.064963.00001</b>
Designed <b>HD</b>	Checked <b>SM</b>	Authorised <b>SM</b>
Date <b>NOV 2023</b>	Date <b>NOV 2023</b>	Date <b>NOV 2023</b>
Date <b>NOV 2023</b>	Date <b>NOV 2023</b>	Date <b>NOV 2023</b>
Drawing Number <b>405.064963.00001.002</b>	Rev. <b>0</b>	