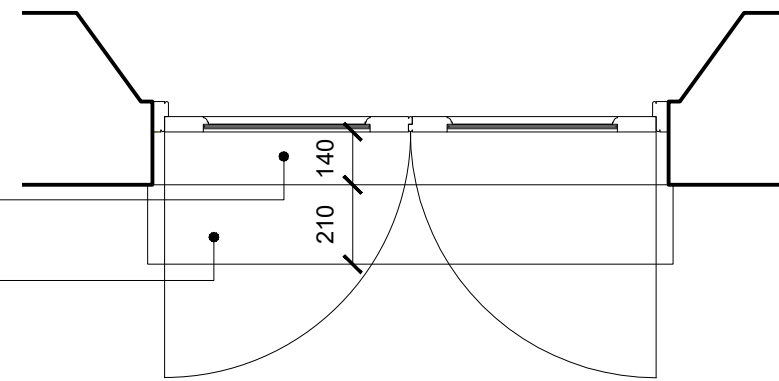
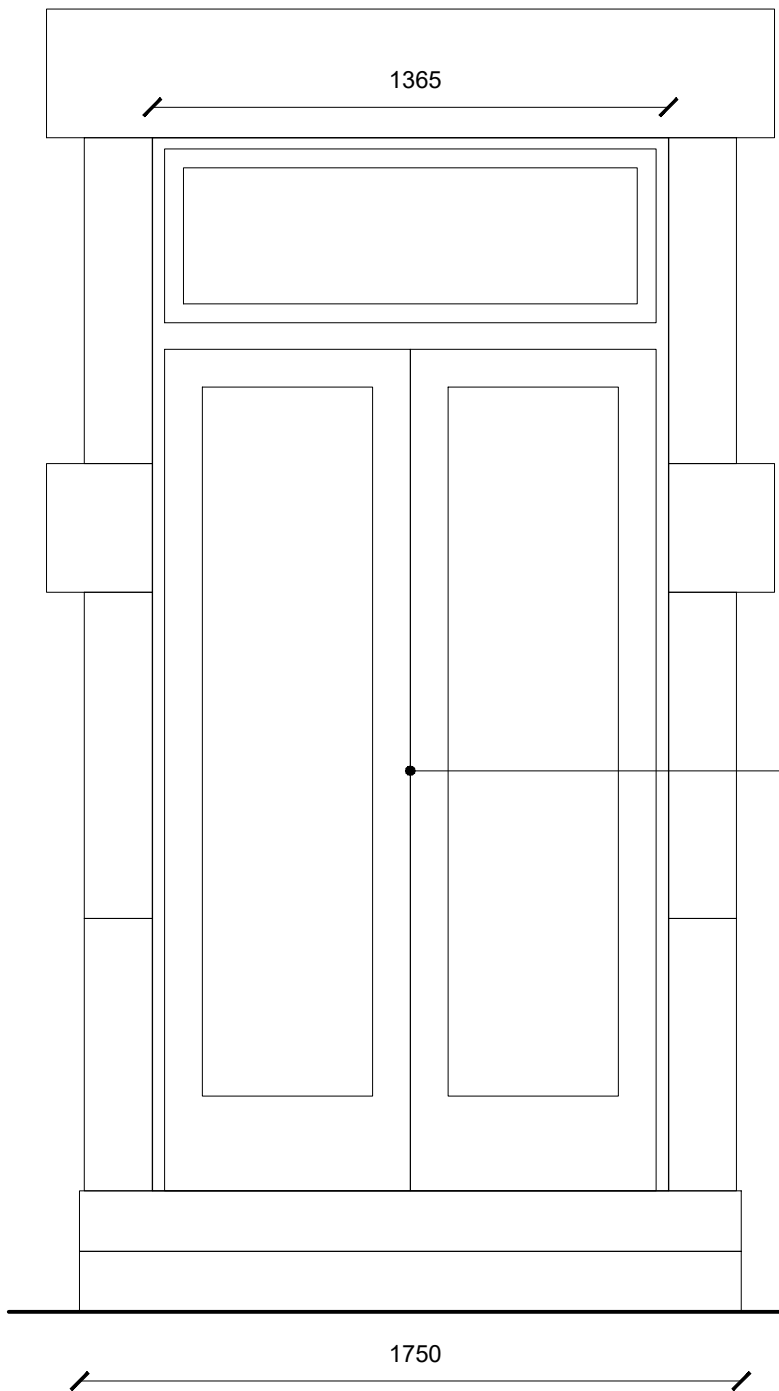


Detail section
1:5

Stone threshold with falls away from building.
Stone step with falls away from building.



Plan
1:20



Elevation
1:20

NOTE

All sizes to be checked on site prior to fabrication.

Door to achieve a maximum u-value of 1.4W/m2k.

External ground level based on limited site survey, to be confirmed on site.

Painted timber door with slimlite double glazing.



Drawing Status
PLANNING

Neil Middleton architect
07930481144 / nm@neilmiddleton.net
www.neilmiddleton.net

Project
069 - 58 South Trinity Road

Drawing Name
Proposed Door