

PLANT SCHEDULE FOR 0266-PP-01

QTY	CODE	PLANT NAME	STOCK	SIZE	SPACING
17No.	Cis Gra 2L*	Cistus "Grayswood Pink"	C 2L	30-40cm	5/m2
11No.	Cor Mid 3L	Cornus sanguinea 'Midwinter Fire'	C 3L	40-60cm	1/m2
20No.	Cor Kel 3L	Cornus stolonifera 'Kelseys'	C 3L	30-40cm	3/m2
7No.	Ela Lim 3L	Elaeagnus x ebbingei 'LimeLight'	C 3L	30-40cm	3/m2
37No.	Esc App 3L	Escallonia 'Apple Blossom'	C 3L	40-60cm	3/m2
27No.	Heb Met	Hebe 'Mette'	C 3L	30-40cm	3/m2
9No.	Hyd Lim 20L	Hydrangea paniculata LimeLight	C 20L	100-125cm	1/m2
3No.	Mag ste 35L	Magnolia stellata	C 35L	125-150cm	1/m2
8No.	Mah W5	Mahonia media 'Winter Sun'	C 3L	30-40cm	3/m2
19No.	Osm Bur	Osmanthus x burkwoodii	C 3L	30-40cm	3/m2
23No.	Phi BE	Philadelphus 'Belle Etoile'	C 3L	30-40cm	3/m2
16No.	Phi MH	Philadelphus 'Manteau d'Hermine'	C 3L	30-40cm	3/m2
9No.	Pit Tom	Pittosporum tenuifolium 'Tom Thumb'	C 3L	30-40cm	3/m2
13No.	Pin mop	Pinus mugo 'Mops'	C 3L	20-30cm	3/m2
16No.	Pot Ab5	Potentilla fruticosa 'Abbotswood'	C 3L	20-30cm	3/m2
3No.	Rho Ger 10L	Rhododendron Germanis	C 10L	40-50cm	1/m2
2No.	Rho Whi 20L	Rhododendron Cunningham's White	C 20L	60-70cm	1/m2
11No.	Ros MJU	Rosmarinus 'Miss Jessops Upright'	C 3L	40-60cm	3/m2
1No.	Sam BL 25L	Sambucus nigra 'Black Lace'	C 25L	80-100cm	1/m2
13No.	Spi Gol	Spiraea japonica 'Goldflame'	C 3L	30-40cm	3/m2
7No.	Sym Han	Symphoricarpos x chenaultii 'Hancock'	C 3L	40-60cm	3/m2

QTY	CODE	PLANT NAME	STOCK	SPACING
23No.	Ger Roz	Geranium Rozanne	C 3L	5/m2
31No.	Hak mac	Hakonechloa macra 'Nicolas'	C 2L	5/m2

QTY	CODE	PLANT NAME	STOCK	HEIGHT	HABIT
3No.	Lon Hal	Lonicera japonica 'Halliana'	C 3L	60-80cm	Twinner

QTY	CODE	PLANT NAME	STOCK	FORM	GIRTH/HEIGHT
2No.	ACE CAM s	Acer campestre	B	STD	10-12cm
1No.	ACE ROY ss	Acer platanoides 'Royal Red'	B	STD	10-12cm
3No.	ALN GLU ss	Ainus glutinosa	B	STD	10-12cm
1No.	AME LAM ms3	Amelanchier lamarckii	RB	MSTEM3	200-250cm
2No.	BET DAL hs	Betula pendula 'Dalecarlica'	C 45L	STD	12-14cm
3No.	CAR BET xhs14	Carpinus betulus	RB	STD	14-16cm
3No.	CER SIL ss	Cercis siliquastrum	C 25L	STD	10-12cm
2No.	LIQ WOR ss	Liquidamber styraciflua 'Worplesdon'	B	STD	10-12cm

PERCENT	QTY	PLANT NAME	STOCK	SIZE
151m NATIVE HEDGE MIX 6 planted @ 6m in a Double Staggered Row				
40%	362No.	Crataegus monogyna	B Trans	60-80cm
15%	136No.	Corylus avellana	B Trans	60-80cm
15%	136No.	Cornus sanguinea	B Trans	60-80cm
10%	91No.	Prunus spinosa	B Trans	60-80cm
5%	45No.	Ilex aquifolium	C 3L	40-60cm
5%	45No.	Rosa canina	B Trans	60-80cm
5%	45No.	Viburnum opulus	C 3L	40-60cm
5%	45No.	Euonymus europaeus	C 3L	40-60cm

To be planted in species groups of approximately 10.

PERCENT	QTY	PLANT NAME	STOCK	SIZE
45m2 GROUND COVER MIX 1 planted @ 3/m2				
34%	46No.	Rosa 'Grouse'	C 2L	20-30cm
33%	45No.	Euonymus fortunei 'Emerald Gaiety'	C 2L	15-20cm
33%	45No.	Lonicera pileata	C 2L	20-30cm

Individual varieties to be planted in groups of approximately 20.

TURF
1175m2 EL1 Flowering lawn mix, by Emorsgate Seeds.

WILDFLOWER
2369m2 EM3 Special General Purpose Meadow Mixture, by Emorsgate Seeds.

NOTES AND ABBREVIATIONS:
B = Bare root (bagged)
C = Container (or pot) grown, followed by size of the container (or pot).
FORM = Shape of tree as supplied by the nursery.
HABIT = Juvenile habit or plant shape as supplied by the nursery.
QTY = Quantity
RB = Rootballed (balled and wrapped).
SIZE = Height or Spread of juvenile plant.
STD = (clear stem) Standard.
STOCK = Root condition/protection method eg Bare root.
Trans = Transplant (or undercut seedling).
Twinner = Twining climber attached to trellis/frame, refer to specification.

- Refer to specification for further information.
- All plants to be completely hardened off
- Substitutions to be agreed with Landscape Architect.

KEY

SOFT WORKS

- Retained tree, refer to tree survey by others.
- Proposed Structural Tree
- Structural hedgerows
- Shrub planting
- Amenity Grass
- Wildflower meadow
- Shrub-Specimen
- Climbing Shrub

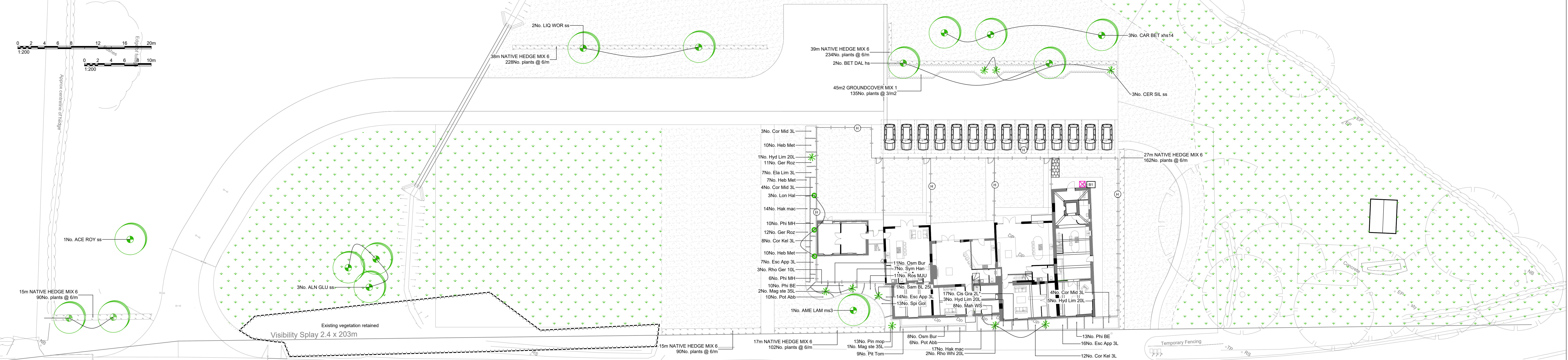
NOTE:

- For all landscape surface finishes refer to Nicola Jayne Landscape Design drawing 0226-LA-01.
- All build ups to project engineers details.
- All walling details to project architects details.

ECOLOGICAL ENHANCEMENTS

- Bird Box - Sparrow Terraces should be erected under the eaves of a building at a minimum height of 3m, in a westerly, northerly or easterly aspect.
- Bird Box - 26mm hole nest boxes (e.g. Schwegerl 1b) should be installed on large trees on the northern boundary. To be installed at a minimum height of 3m in a westerly, northerly or easterly aspect.
- Occasional gaps shall be provided at the base of any fences (13cm x 13cm) to allow species such as hedgehog to move through the site and prevent habitat fragmentation. Marked with a H symbol as shown.

NJ LANDSCAPE DESIGN REF:
0266-PP-01
This drawing is subject to copyright.
Do not scale from this drawing.
Based on drawing by Nicola Jayne Landscape Design
Drawing number 0226-LA-01.
Based on drawing by EWAN DRYBURGH ARCHITECTS
LTD Drawing number 22.028 HARE AND HOUNDS
PLANNING



- PLANTING NOTES:**
- All work to be carried out to the satisfaction of the Landscape Architect.
 - No planting position or species shall be altered without the approval of the Landscape Architect.
 - Engineer to confirm foundation details in accordance with practice note 4.2 of the NHBC guide.
 - Detailed foundation and drainage designs were not available when planting proposals were produced.
 - All topsoil and subsoil to be analysed by a qualified soil scientist and the findings supplied in report form including recommendations to bringing soils up to specification. The soil survey shall include analysis of representative topsoil and subsoil samples (sample numbers to be determined by the soil scientist).
 - Landscape areas shall be excavated to the following minimum depths:
Amenity Grass - 150mm
Shrub areas - 450mm
Meadow/Wildflower areas to be installed on min 200mm graded, decompacted and cultivated subsoil. To remove unwanted weed grasses, the area shall be treated with Glyphosate prior to seed bed cultivation and left for two weeks.
 - Back fill landscape areas with multi-purpose topsoil to BS 3982: 2015 to a maximum depth of 150mm for grass areas and 300mm for shrub areas with free draining subsoil below, if required soil to be de-compacted to allow good drainage. All areas where soil is to be incorporated over formerly hard areas or compacted ground, these are to be excavated a further 300mm and backfilled to below topsoil level with free draining subsoil to match PH of topsoil used on site. Following settlement of topsoil, top up areas and cultivate to depth of topsoil.
 - Contractors to ensure all planting beds and tree pits are free draining.
 - Trees to be selected and planted in accordance with BS 8545:2014. Tree pits to be square and 150mm wider than the rootball on all sides. The planting pit should be no deeper than the existing rootball or container depth.
 - Dimensions as follows:
Trees 14-16cm girth- 600 x 600mm, depth approx. 500-600mm depending on rootball size
Trees 16-18cm girth- 700 x 700mm, depth approx. 600mm depending on rootball size
Trees 18-20cm girth- 800 x 800mm, depth approx. 700mm depending on rootball size
Trees 20-25cm girth- 900 x 900mm, depth approx. 800mm depending on rootball size

- The base of the tree pit should remain undisturbed, unless additional measures are specified, to avoid sinking of the rootball. The rootball should be proud of the soil and easily visible after planting. Tree stock should be supplied with nursery line marked on tree if available from nursery and line planted flush with ground level.
- An organic fungi should be applied to all newly planted trees and shrubs to establish healthy root growth, such as Rootgrow Professional Mycorrhizal Fungi. Apply 2g per litre of pot per rootball, for container trees at 175-200cm allow 50g and for 12-14cm girth trees allow 150g per tree. The gel granules should be mixed with water as per manufacturer's instructions, the plant roots dipped into the mixture to ensure even coverage.
- Standard trees in soft landscaped areas shall be short double staked with stakes to extend min 300mm into the bottom of the tree pit. Stakes to be cut approximately 600mm above ground and secured using appropriate expanding ties. Stakes shall be removed at the earliest opportunity (approximately 3 years), when trees are established, except underground guying. Each tree pit shall incorporate a seep hose system to facilitate a hose being inserted to avoid unnecessary water loss. All trees planted in grass shall be surrounded with a min 500mm diameter circle of mulch to protect stem/trunk from strimmer damage.
- Where trees are to be planted in close proximity to public services such as foul, surface and mains water, an appropriate root barrier such as ReRoot6000 to 2000 or equivalent is to be installed to a depth below invert levels of services. Refer to engineer's drawing for root barrier locations.
- All preparations, both hard and soft under/around trees to be retained must be carried out by hand to protect roots.
- Climbers to be planted min 150mm away from supporting structure and nursery canes removed. Climbers to be carefully threaded into wire support and attached using appropriate ties. For most average growth climbers such as Clematis, support to be horizontal and vertical stainless steel wires at 350mm intervals horizontally and 200mm intervals vertically, 100mm clearance to support structure. Supplier: Jakob Wires or equivalent, Tel: 0845 1300 135. Where strong growing and twining varieties of climbers are used refer to supplier's recommendations for distances of wires.
- All climbing plants planted in areas of proposed grass to be fitted with Acorn Aborach Simmen Guard or similar agreed.
- All plant material procedures are to conform to the relevant British Standards (BS36/4423) codes of practice. Unless otherwise specified planting is to conform to National Planting Specification.
- All shrubs are to be furnished with at least 3 strong breaks and supplied container grown unless otherwise specified ie bareroot. Shrubs to be planted in holes big enough to accommodate the plant without damaging the roots (min. 300mm deep and wide). Plants to be firmed, watered in and dead/damaged branches removed after planting.
- The use of pesticides (herbicides, insecticides, fungicides and slug pellets etc) should be discouraged to prevent cumulative fatal effects to animals via the food chain, particularly invertebrates, birds and/or mammals. Any pesticides used should be non-residual.
- A slow release fertilizer shall be applied after planting in accordance with manufacturer's instructions and soil scientist's recommendations.
- All planted areas to be mulched with a medium grade bark mulch to a minimum depth of 75mm after plants have been well watered. Mulch such as Melcourt Amenity Bark Mulch, 3-35mm, or similar. Care must be taken not to smother the plants.
- All plants in native mixes to be fitted with spiral rabbit protection guards.
- All front gardens are to be turfed. Before turfing, rotavate and level topsoil as required, remove debris and stones above 30mm dia. Add pre-seeding fertilizer to manufacturer's specification. Turf shall be weed free, laid from planks (to avoid damage) with broken joints and well butted up. Water as necessary to avoid shrinkage.
- Planting will commence during the first planting season (mid Nov-mid March) after substantial completion of the site. Should planting commence outside the dormant period allow for all bare root stock to be supplied container grown.

REV DATE DESCRIPTION

REV 1 28/05/2023 Revised architectural layout. NP
REV 2 28/05/2023 Legged text amended. NP

CLIENT: H&H Renovations Limited
PROJECT: Cruckton Hare & Hounds
DRAWING TITLE: Detailed Planting Proposals
DRAWING SCALE: 1:100 @ A2
DRAWING DATE: 27/06/2023
DRAWING REV: P2
DRAWN BY: NZ
CHECKED BY: CS
APPROVED BY: NJ

NICOLA JAYNE LANDSCAPE DESIGN
www.njlandscape.co.uk
info@njlandscape.co.uk

PLANNING ONLY
NOT FOR TENDER OR CONSTRUCTION