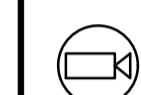

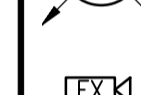



DRAWING BACKGROUND INFO

NOTES

- DO NOT SCALE THIS DRAWING
- THIS DRAWING IS TO BE READ IN CONJUNCTION WITH THE ARCHITECTS, STRUCTURAL ENGINEERS AND MEASURED SURVEY DRAWINGS
- THE CONTRACTOR SHALL REFER TO THE ARCHITECTS AND MEASURED SURVEY DRAWINGS FOR SETTING OUT LINES
- ALL SERVICE DUCTS AND FIRE COMPARTMENTATION TO BE MADE GOOD AFTER INSTALLATION OF THE SERVICES BY THE CONTRACTOR TO THE ARCHITECTS DETAILS
- THIS DRAWING IS TO BE READ IN CONJUNCTION WITH THE STANDARD AND PROJECT SPECIFICATIONS
- SEPARATION OF SERVICES SHALL BE APPLIED FOR LIGHTING & POWER, I.T CABLING, SECURITY & ACCESS CONTROL AND FIRE ALARM CABLING. CONTAINMENT SHALL BE PROVIDED WHERE SERVICES CROSS-OVER (MINIMUM SEPARATION OF 150mm SPACING BETWEEN SYSTEMS)
- INSTALLATION OF SERVICES SHALL BE COORDINATED WITH ALL OTHER TRADES AND SITE INSTALLATIONS.
- ALL EXISTING CAMERAS AND NVR SHALL BE VALIDATED TO BE RETAINED AND REUSED
- THE CONTRACTOR SHALL ENSURE THAT ALL CABLES ARE CAT5/6 CABLES
- THE NEW CONTAINMENT SYSTEM MUST BE SURFACE MOUNTED USING WHITE PVC TRUNKING

LEGEND

-  MICRODOM-DS-2CD2387G2-LSU/SL COLORVU 8MP CAMERA PROVIDED BY HIKVISION OR EQUAL AND APPROVED
-  DS-2CD63C5G1-MS 12MP DEEP IN VIEW IR NETWORK FISHEYE CAMERA PROVIDED BY HIKVISION
-  DS-2CD2T47G2-L 4MP BULLET CAMERA FOR EXTERNAL AREAS PROVIDED BY HIKVISION
-  ISD-7732NXI-M4/X DEEP IN MIND M SERIES DIGITAL VIDEO RECORDER, PROVIDED BY HIKVISION

T02	31.10.23	BJH	TENDER DRAWING
T01	11.09.23	RB	TENDER DRAWING
Rev	Date	Drn	Description

Client	FAITHFUL & GOULD
Architect	
Project	CENTRAL REFERENCE LIBRARY 35 St Martin's St, WC2H 7HP

FHP  **ESS**

London, Bexley, Birmingham, Glasgow, Leeds, Manchester
 ☎ 0808 175 1000 📧 drawings@fhpress.com 🌐 www.fhpress.com

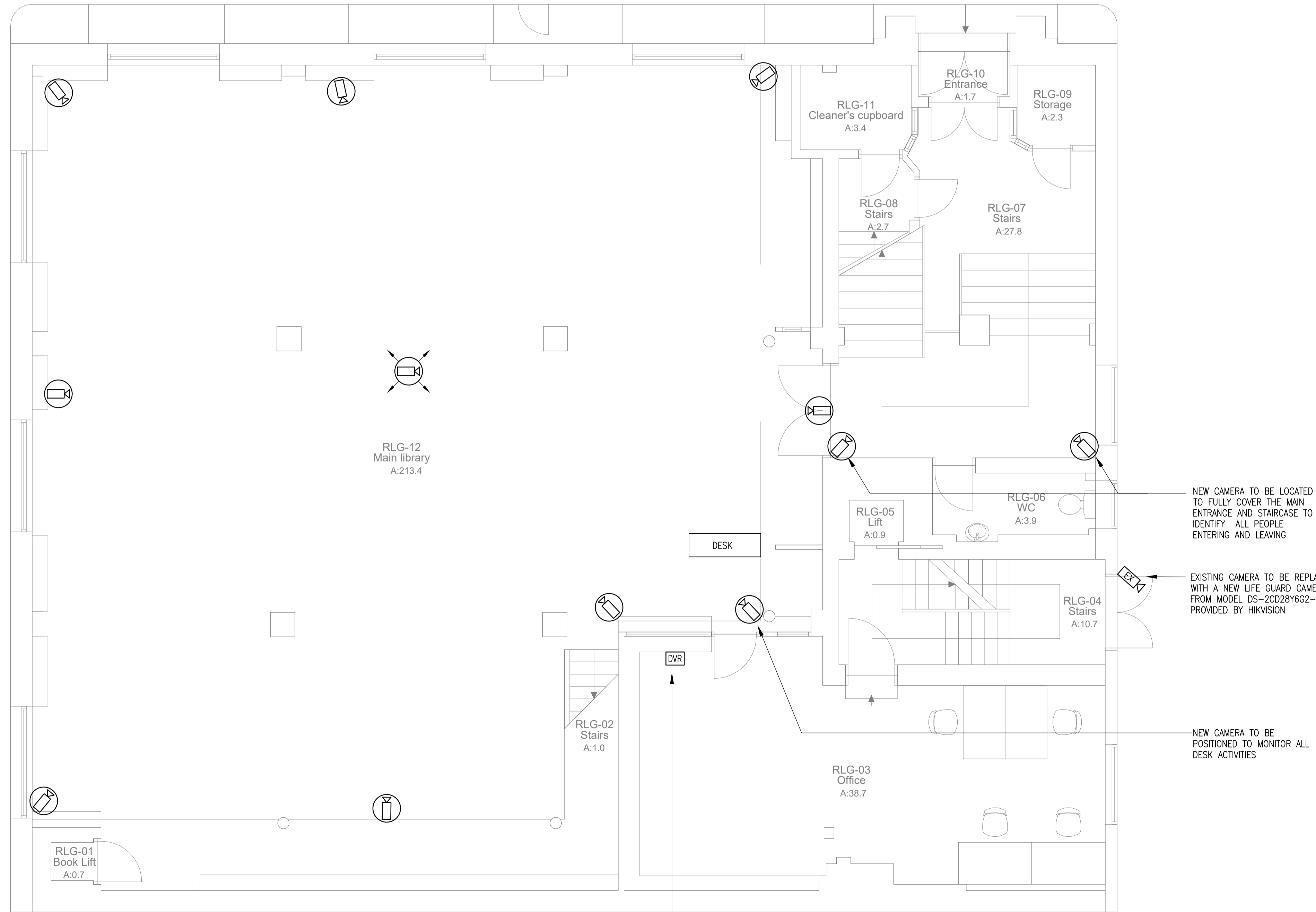
Drawing Title	ELECTRICAL SERVICES SECURITY, CCTV & ACCESS CONTROL GROUND FLOOR
---------------	---

Scale	1:50 @ A1	Drawn	AutoCAD/RB
Date	SEP 23	Checked	SS

Status	STAGE 3 TENDER
--------	-----------------------

Project number/Drawing number	Revision
43619C-E-680-00-100	T02

Main Entrance

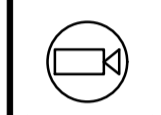
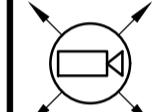

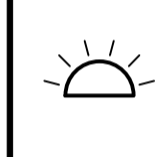
EXISTING NETWORK VIDEO RECORDER TO BE REPLACED WITH ISD-7732NXI-M4X AND INSTALLED WITH LOCKABLE SECURITY ENCLOSURE

DRAWING BACKGROUND INFO

NOTES

1. DO NOT SCALE THIS DRAWING
2. THIS DRAWING IS TO BE READ IN CONJUNCTION WITH THE ARCHITECTS, STRUCTURAL ENGINEERS AND MEASURED SURVEY DRAWINGS
3. THE CONTRACTOR SHALL REFER TO THE ARCHITECTS AND MEASURED SURVEY DRAWINGS FOR SETTING OUT LINES
4. ALL SERVICE DUCTS AND FIRE COMPARTMENTATION TO BE MADE GOOD AFTER INSTALLATION OF THE SERVICES BY THE CONTRACTOR TO THE ARCHITECTS DETAILS
5. THIS DRAWING IS TO BE READ IN CONJUNCTION WITH THE STANDARD AND PROJECT SPECIFICATIONS
6. SEPARATION OF SERVICES SHALL BE APPLIED FOR LIGHTING & POWER, I.T CABLING, SECURITY & ACCESS CONTROL AND FIRE ALARM CABLING. CONTAINMENT SHALL BE PROVIDED WHERE SERVICES CROSS-OVER (MINIMUM SEPARATION OF 150mm SPACING BETWEEN SYSTEMS)
8. INSTALLATION OF SERVICES SHALL BE COORDINATED WITH ALL OTHER TRADES AND SITE INSTALLATIONS.
9. ALL EXISTING CAMERAS AND NVR SHALL BE VALIDATED TO BE RETAINED AND REUSED
10. THE CONTRACTOR SHALL ENSURE THAT ALL CABLES ARE CAT5/6 CABLES
11. THE NEW CONTAINMENT SYSTEM MUST BE SURFACE MOUNTED USING WHITE PVC TRUNKING

LEGEND

-  MICRODOM-DS-2CD2387G2-LSU/SL COLORVU 8MP CAMERA PROVIDED BY HIKVISION OR EQUAL AND APPROVED
-  DS-2CD63C5G1-WS 12MP DEEP IN VIEW IR NETWORK FISHEYE CAMERA PROVIDED BY HIKVISION
-  ISD-7732NXI-M4/X DEEP IN MIND M SERIES DIGITAL VIDEO RECORDER, PROVIDED BY HIKVISION
-  WALL MOUNTED LIGHT CONTROLLED BY PIR AND PHOTOCCELL SENSOR

Rev	Date	Drn	Description
T01	11.09.23	RB	PRELIMINARY ISSUE

Client FAITHFUL & GOULD
Architect
Project CENTRAL REFERENCE LIBRARY 35 St Martin's St, WC2H 7HP

FHP  **ESS**

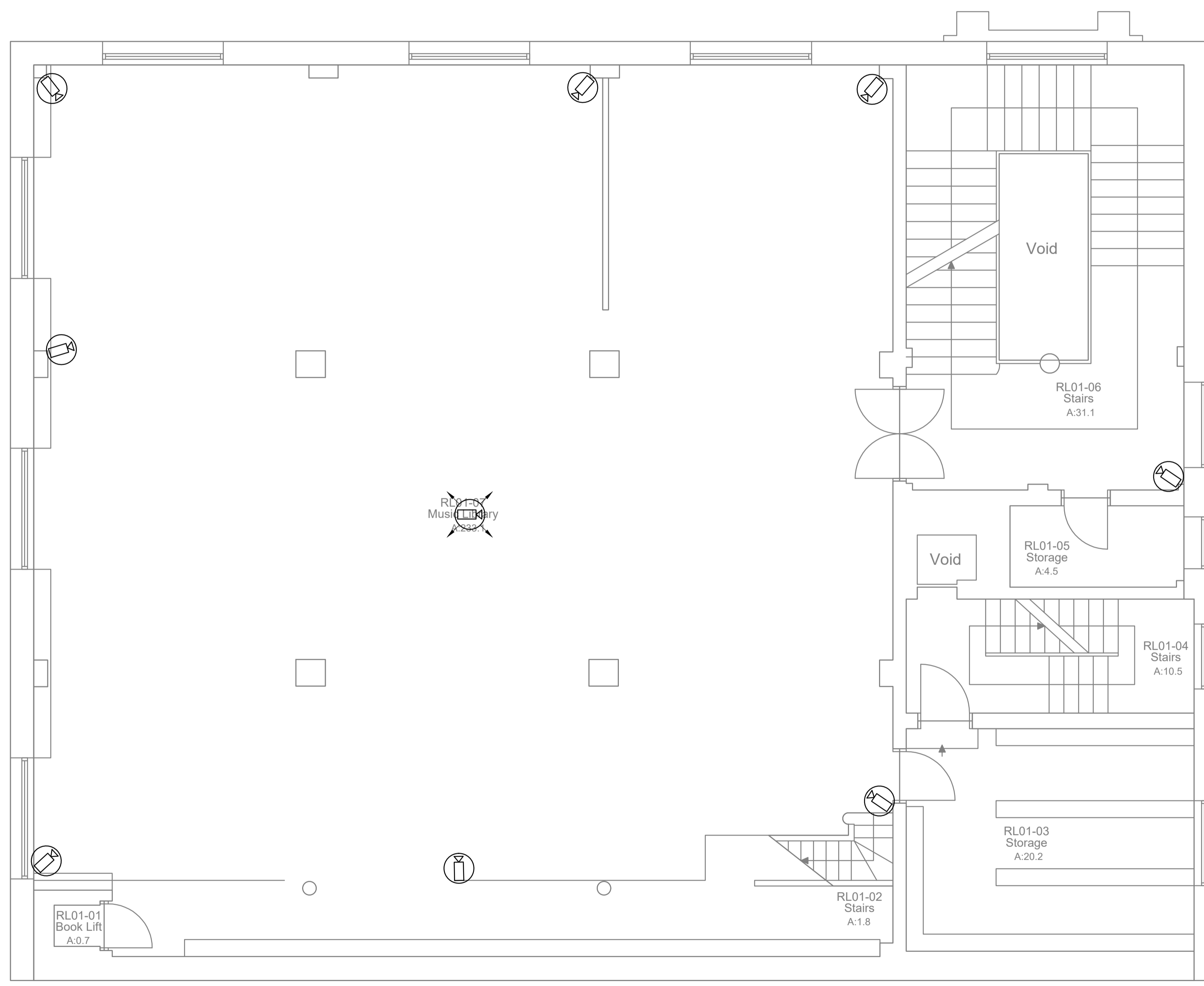
London, Bexley, Birmingham, Glasgow, Leeds, Manchester
 ☎ 0808 175 1000 📧 drawings@fhpress.com 🌐 www.fhpress.com

Drawing Title
**ELECTRICAL SERVICES
 SECURITY, CCTV & ACCESS CONTROL
 FIRST FLOOR**

Scale 1:50 @ A1	Drawn AutoCAD/RB
Date SEP 23	Checked SS

Status
STAGE 3 TENDER

Project number/Drawing number 43619C-E-680-01-100	Revision T01
---	------------------------


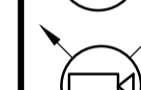

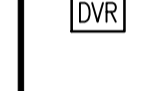


DRAWING BACKGROUND INFO

NOTES

1. DO NOT SCALE THIS DRAWING
2. THIS DRAWING IS TO BE READ IN CONJUNCTION WITH THE ARCHITECTS, STRUCTURAL ENGINEERS AND MEASURED SURVEY DRAWINGS
3. THE CONTRACTOR SHALL REFER TO THE ARCHITECTS AND MEASURED SURVEY DRAWINGS FOR SETTING OUT LINES
4. ALL SERVICE DUCTS AND FIRE COMPARTMENTATION TO BE MADE GOOD AFTER INSTALLATION OF THE SERVICES BY THE CONTRACTOR TO THE ARCHITECTS DETAILS
5. THIS DRAWING IS TO BE READ IN CONJUNCTION WITH THE STANDARD AND PROJECT SPECIFICATIONS
6. SEPARATION OF SERVICES SHALL BE APPLIED FOR LIGHTING & POWER, I.T CABLING, SECURITY & ACCESS CONTROL AND FIRE ALARM CABLING. CONTAINMENT SHALL BE PROVIDED WHERE SERVICES CROSS-OVER (MINIMUM SEPARATION OF 150mm SPACING BETWEEN SYSTEMS)
8. INSTALLATION OF SERVICES SHALL BE COORDINATED WITH ALL OTHER TRADES AND SITE INSTALLATIONS.
9. ALL EXISTING CAMERAS AND NVR SHALL BE VALIDATED TO BE RETAINED AND REUSED
10. THE CONTRACTOR SHALL ENSURE THAT ALL CABLES ARE CAT5/6 CABLES
11. THE NEW CONTAINMENT SYSTEM MUST BE SURFACE MOUNTED USING WHITE PVC TRUNKING

LEGEND

-  MICRODOM-DS-2CD2387G2-LSU/SL COLORVU 8MP CAMERA PROVIDED BY HIKVISION OR EQUAL AND APPROVED
-  DS-2CD63C5G1-IVS 12MP DEEP IN VIEW IR NETWORK FISHEYE CAMERA PROVIDED BY HIKVISION
-  ISD-7732NXI-M4/X DEEP IN MIND M SERIES DIGITAL VIDEO RECORDER, PROVIDED BY HIKVISION
-  WALL MOUNTED LIGHT CONTROLLED BY PIR AND PHOTOCCELL SENSOR

Rev	Date	Drn	Description
T01	11.09.23	RB	PRELIMINARY ISSUE

Client	FAITHFUL & GOULD
Architect	
Project	CENTRAL REFERENCE LIBRARY 35 St Martin's St, WC2H 7HP

FHP  **ESS**

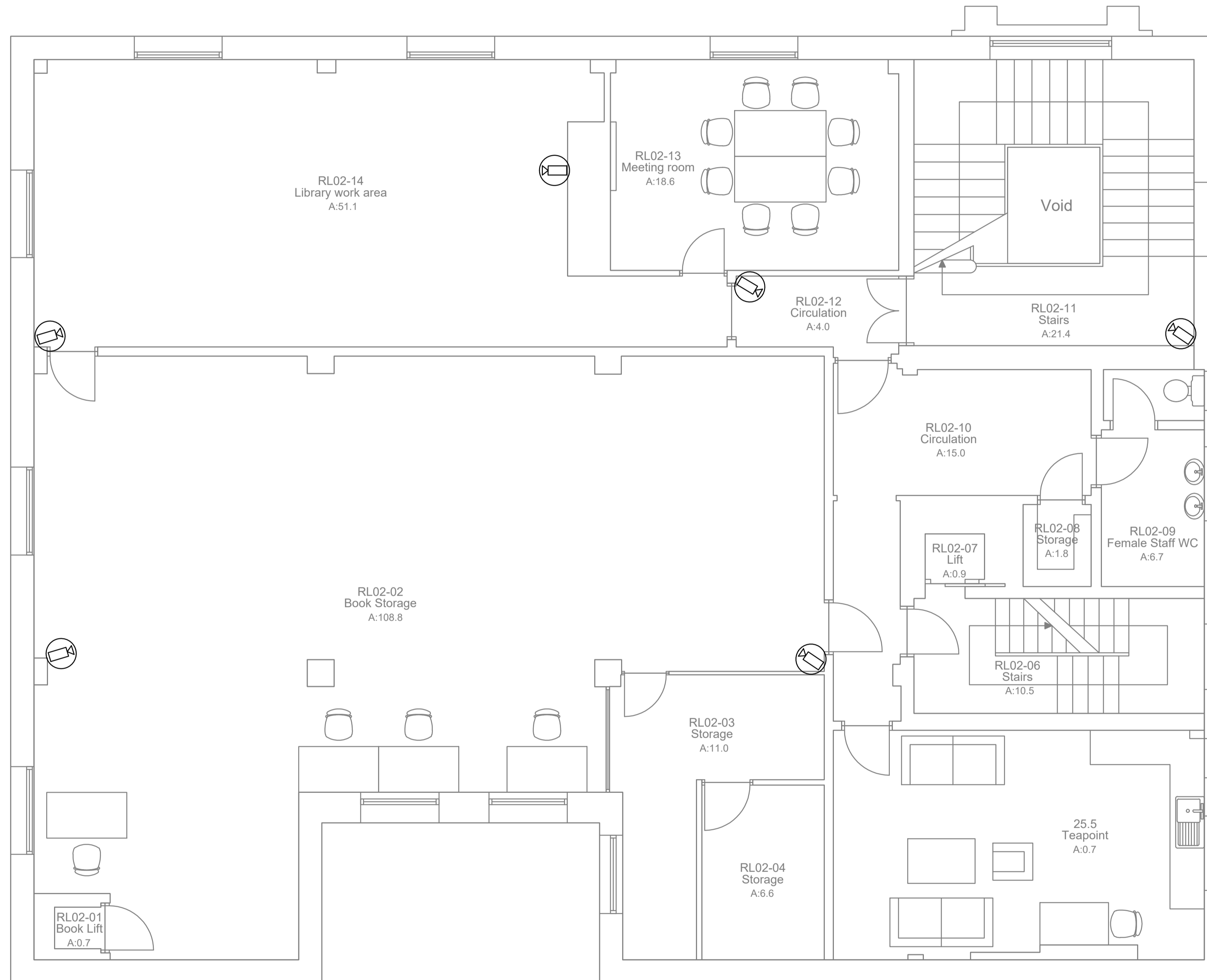
London, Bexley, Birmingham, Glasgow, Leeds, Manchester
 ☎ 0808 175 1000 📧 drawings@fhpress.com 🌐 www.fhpress.com

Drawing Title
**ELECTRICAL SERVICES
 SECURITY, CCTV & ACCESS CONTROL
 SECOND FLOOR**

Scale	1:50 @ A1	Drawn	AutoCAD/RB
Date	SEP 23	Checked	SS

Status
STAGE 3 TENDER ISSUE

Project number/Drawing number	Revision
43619C-E-680-02-100	T01

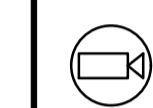
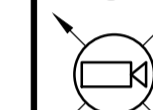




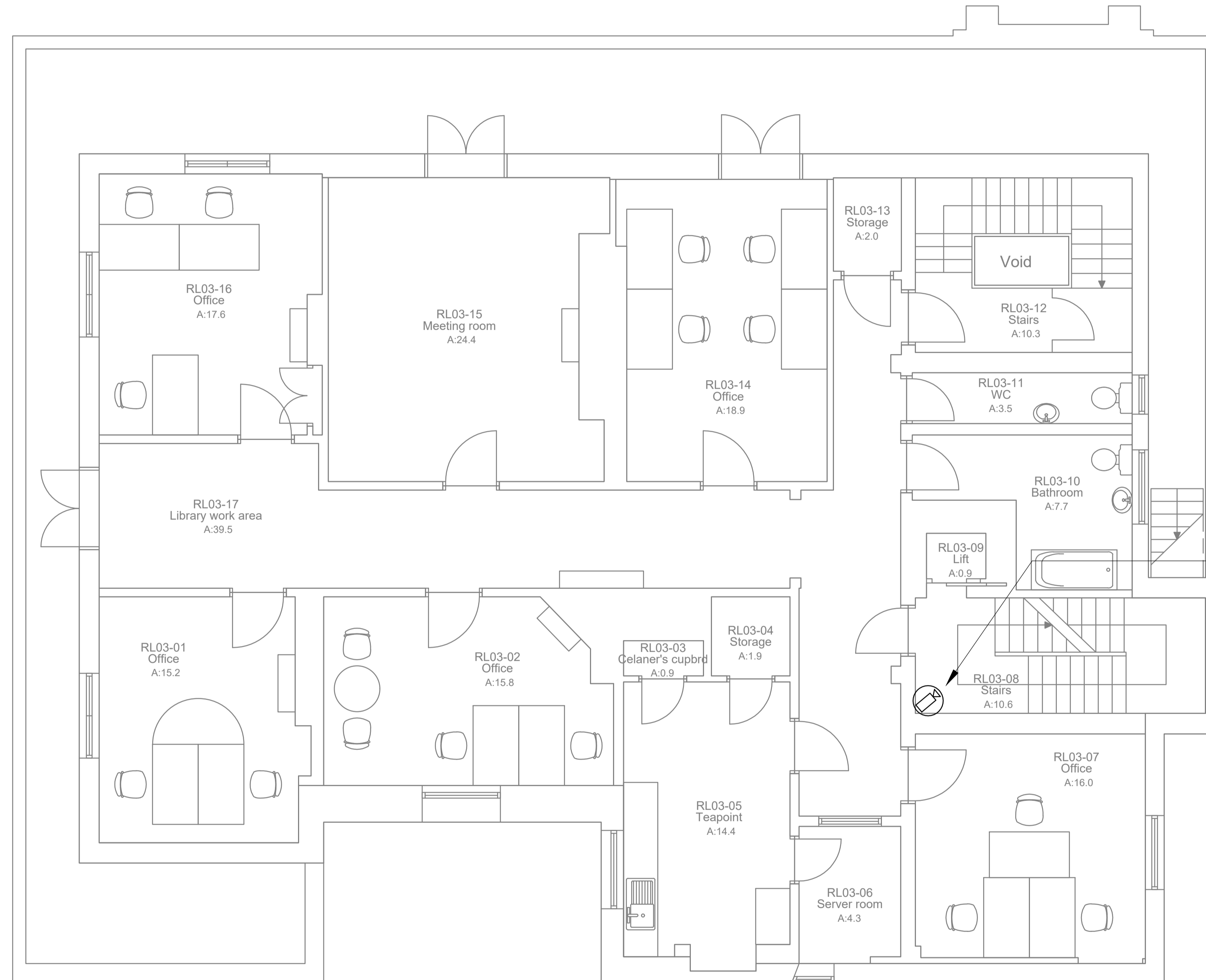
DRAWING BACKGROUND INFO

NOTES

- DO NOT SCALE THIS DRAWING
- THIS DRAWING IS TO BE READ IN CONJUNCTION WITH THE ARCHITECTS, STRUCTURAL ENGINEERS AND MEASURED SURVEY DRAWINGS
- THE CONTRACTOR SHALL REFER TO THE ARCHITECTS AND MEASURED SURVEY DRAWINGS FOR SETTING OUT LINES
- ALL SERVICE DUCTS AND FIRE COMPARTMENTATION TO BE MADE GOOD AFTER INSTALLATION OF THE SERVICES BY THE CONTRACTOR TO THE ARCHITECTS DETAILS
- THIS DRAWING IS TO BE READ IN CONJUNCTION WITH THE STANDARD AND PROJECT SPECIFICATIONS
- SEPARATION OF SERVICES SHALL BE APPLIED FOR LIGHTING & POWER, I.T CABLING, SECURITY & ACCESS CONTROL AND FIRE ALARM CABLING. CONTAINMENT SHALL BE PROVIDED WHERE SERVICES CROSS-OVER (MINIMUM SEPARATION OF 150mm SPACING BETWEEN SYSTEMS)
- INSTALLATION OF SERVICES SHALL BE COORDINATED WITH ALL OTHER TRADES AND SITE INSTALLATIONS.
- ALL EXISTING CAMERAS AND NVR SHALL BE VALIDATED TO BE RETAINED AND REUSED
- THE CONTRACTOR SHALL ENSURE THAT ALL CABLES ARE CAT5/6 CABLES
- THE NEW CONTAINMENT SYSTEM MUST BE SURFACE MOUNTED USING WHITE PVC TRUNKING

LEGEND

-  MICRODOM-DS-2CD2387G2-LSU/SL COLORVU 8MP CAMERA PROVIDED BY HIKVISION OR EQUAL AND APPROVED
-  DS-2CD63C5G1-WS 12MP DEEP IN VIEW IR NETWORK FISHEYE CAMERA PROVIDED BY HIKVISION
-  ISD-7732NXI-M4/X DEEP IN MIND M SERIES DIGITAL VIDEO RECORDER, PROVIDED BY HIKVISION
-  WALL MOUNTED LIGHT CONTROLLED BY PIR AND PHOTOCCELL SENSOR



NEW COLOR VU 8MP CAMERA TO MONITOR ACTIVITY OUTSIDE THIRD FLOOR OFFICES

Rev	Date	Drn	Description
T01	11.09.23	RB	PRELIMINARY ISSUE

Client	FAITHFUL & GOULD
Architect	
Project	CENTRAL REFERENCE LIBRARY 35 St Martin's St, WC2H 7HP

FHP  **ESS**

London, Bexley, Birmingham, Glasgow, Leeds, Manchester
 ☎ 0808 175 1000 📧 drawings@fhpe.com 🌐 www.fhpe.com

Drawing Title	ELECTRICAL SERVICES SECURITY, CCTV & ACCESS CONTROL THIRD FLOOR		
Scale	1:50 @ A1	Drawn	AutoCAD/RB
Date	SEP 23	Checked	SS

Status
STAGE 3 TENDER ISSUE

Project number/Drawing number	Revision
43619C-E-680-03-100	T01