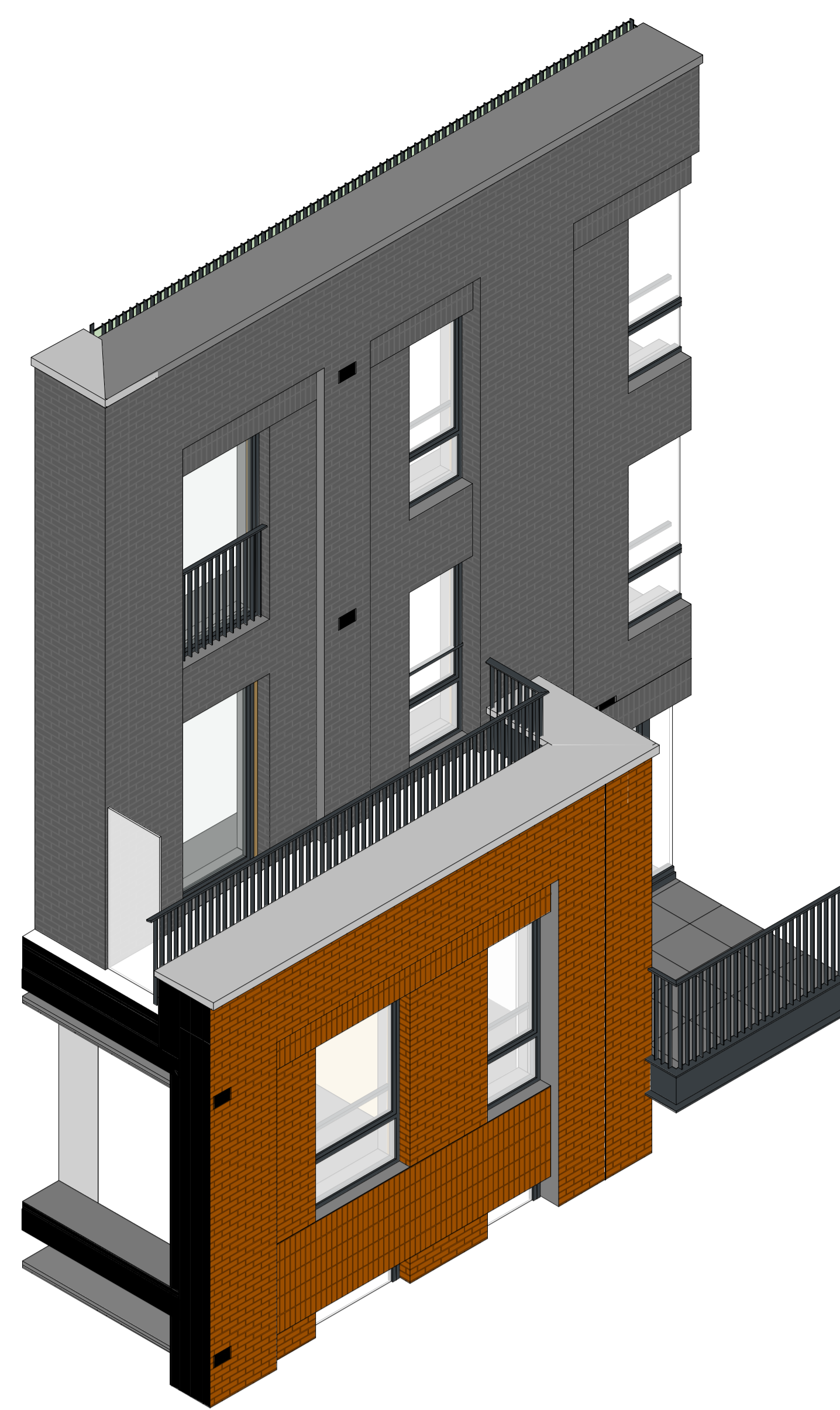


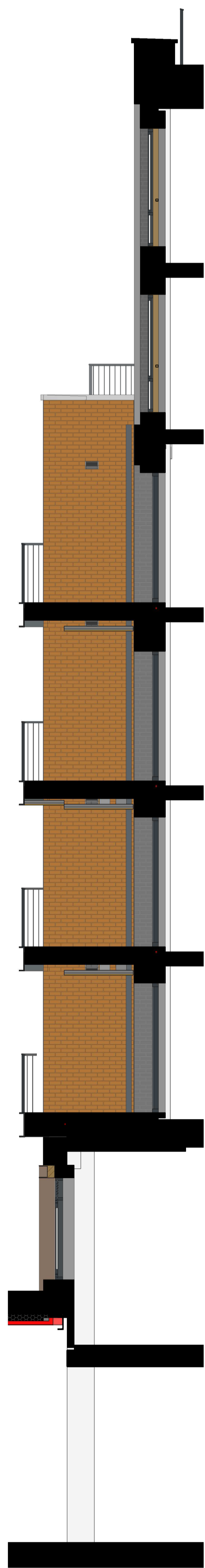
1. Plan  
1:50



5. 3D View



2. Elevation  
1:50



4. Section  
1:50



3. Elevation  
1:20

1. Inward opening windows – RAL 7016
2. Patio doors – RAL 7016
3. Steel balconies and balustrades – RAL 7016
4. Aluminium rainwater pipes – RAL 7016
5. Aluminium cills – RAL 7016
6. Precast concrete cills
7. Precast concrete capping
8. Red Brick façade – Hurstwood Multi
9. Blue Brick façade – Ketley Staffordshire Blue Engineering Brick
10. Curtain walling - RAL 7016
11. Base Spandrel panel - RAL 7016
12. First floor glass spandrel
13. Louvres – RAL 7016
14. Omitted
15. Facing Panel - Perforated Corten Steel
16. Commercial entrance canopies – Corten steel
17. GRC panelling and entrance porticos
18. Retained façade – existing brick wall
19. Steel Portico – RAL 7016
20. Balcony divider - Steel framing, RAL 7016
21. Balcony light - RAL 7016
22. Brick Special Panel - Ketley Staffordshire Blue Wavy Brick Special

Refer to drawing number GLE-AHR-XX-XX-DR-A-08917-Material Palette for further information.

Rev	Description	Date	Dr	App	Checked by
C2	Corten steel facing panels and entrance (conspicuous resistance)	27.11.2023	AS	BU	
C1	Corten steel elements omitted	21.11.2023	AS	BU	
P1	Work in Progress	01.11.2023	PS	BU	
TS		30.04.2021	KL		



AHR London Ltd  
51-55 Kew Street  
London  
EC1R 8TE  
United Kingdom

T +44(0)20 76379769  
E london@ahr.co.uk  
www.ahr.co.uk

client name <b>HG Construction</b>	
project <b>49 - 53 Glengall Road</b>	
drawing <b>Bay detail 10</b>	
computer file G:\Projects\49-53 Glengall Road\49-53 Glengall Road\00000000.dwg	plot date <b>27.11.2023</b>
project number <b>2020.000475.000</b>	scale <b>As indicated@A0</b>
drawing number <b>GLE-AHR-ZZ-ZZ-DR-A-20910</b>	revision <b>C2 S1</b>

This drawing is to be read in conjunction with all related drawings. All dimensions must be checked and verified on site before commencing any work or producing shop drawings. The originator should be notified immediately of any discrepancy. The drawing is copyright and remains the property of AHR.