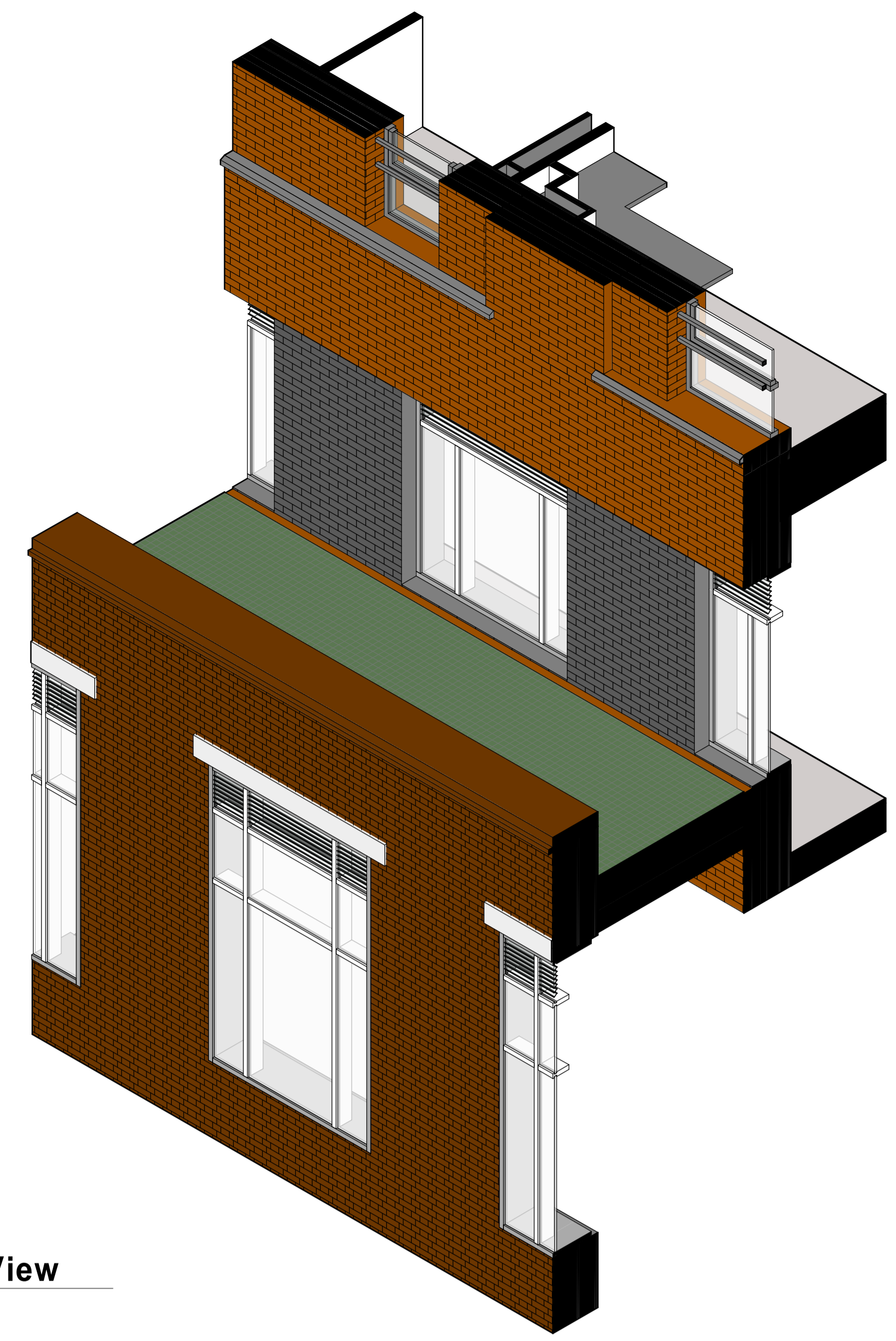
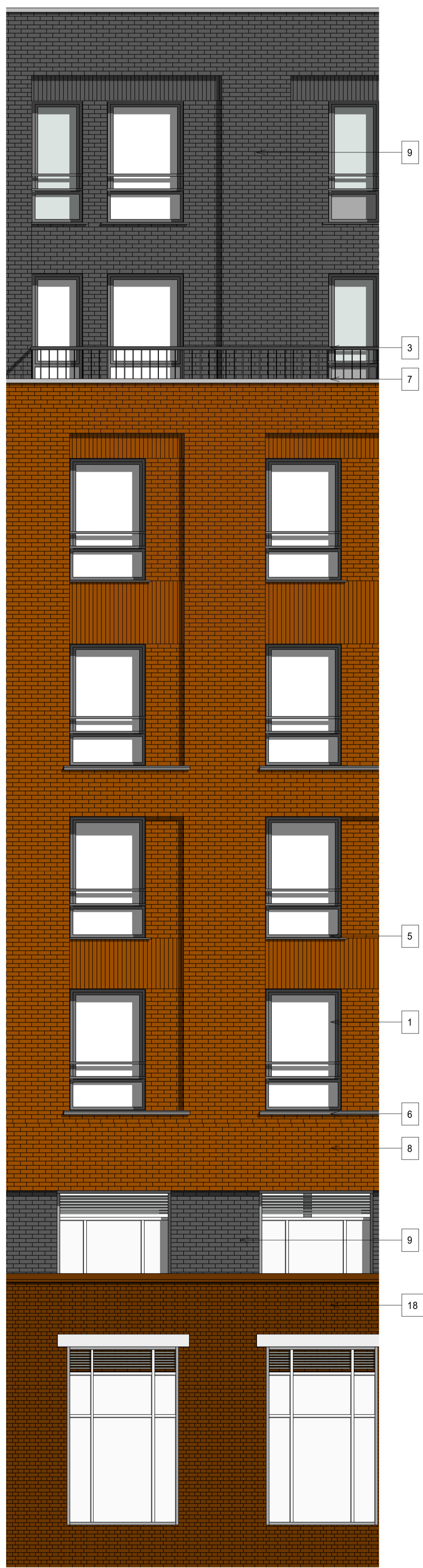


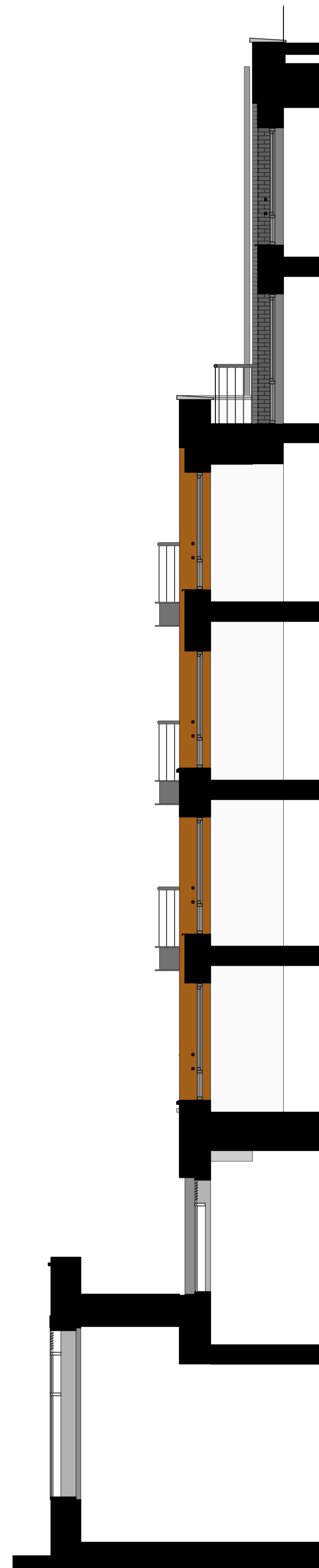
5 Plan
1 : 50



1 3D View



4 Elevation
1 : 50



2 Section
1 : 50



3 Elevation
1 : 20

MATERIAL PALETTE

EXISTING FAÇADES

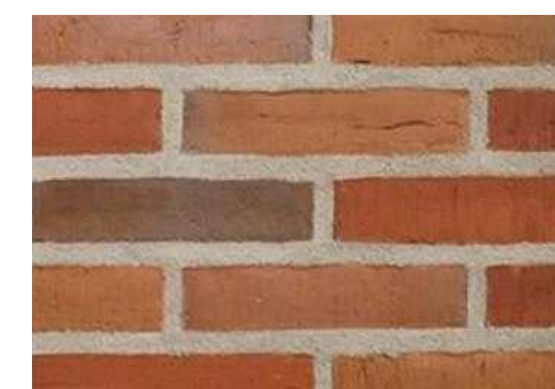


RED BRICK
ENGLISH CROSS BOND



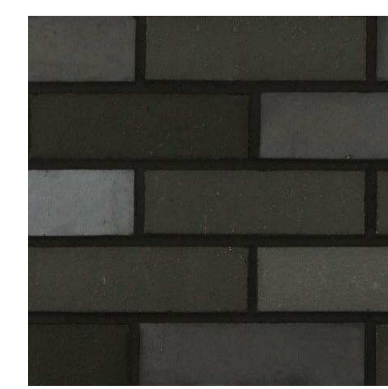
WHITE TOP OF WINDOWS

PRIMARY FAÇADE = RED BRICK



HURWOOD MULTI - LW BRICK
WATERKUK LONG BRICK

SETBACK FAÇADE = DARK GREY BRICK



BLOCKLEYS
SYNTHESIS S14
DARK GREY MORTAR

METALWORK

CORTEN



CORTEN



PERFORATED CORTEN
PANELS

WINDOW FRAMES



RAL 7016
BALCONY LIGHT
RAL 7016



BALCONY LIGHT

PORTICOS + NEW STREET FAÇADE



GRC PANELS - white



GRC PANELS - white

- Inward opening windows – RAL 7016
- Sliding patio doors – RAL 7016
- Steel balconies and balustrades – RAL 7016
- Aluminium rainwater pipes – RAL 7016
- Aluminium cills – RAL 7016
- Precast concrete cills
- Precast concrete capping
- Red Brick façade – Hurstwood Multi
- Dark Grey Brick façade – Brockleys Synthesis S14
- Curtain walling - RAL 7016
- Base Spandrel panel - RAL 7016
- First floor glass spandrel
- Louvers – RAL 7016
- Solar shading – Corten steel
- Facing panel – perforated Corten steel
- Commercial entrance canopies – Corten steel
- GRC panelling and entrance porticos
- Retained façade – existing brick wall
- Steel Portico – RAL 7016
- Balcony divider - Steel framing, RAL 7016
- Balcony light - RAL 7016
- Column cladding - RAL 7016

Rev	Description	Date	Dr	App
C2	Minor amendments	01-06-2021		
C1	First issue	30-04-21		

Original by	Date made	Approved by
TS	30-04-2021	KL



AHR London Ltd
5-8 Bedford Street
London
EC1R 4EG
United Kingdom

T +44 (0)20 78379769
E london@ahr.co.uk
www.ahr.co.uk

Client Name
Southern Housing Group

Project
49 - 53 Glengall Road

Drawing
Bay detail 02

Computer File
GLE-AHR-B1-ZZ-DR-A-20902_02.dwg

Project Number
2020.000475.000

Drawing Number
GLE-AHR-B1-ZZ-DR-A-20902

This drawing is to be used in conjunction with all related drawings. All dimensions must be checked and verified on site before commencing any work or producing shop drawings. The copyright shall be retained irrespective of any discrepancy. This drawing is copyright and remains the property of AHR.