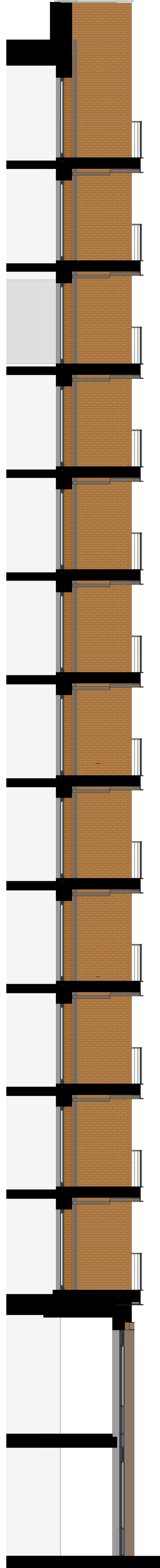


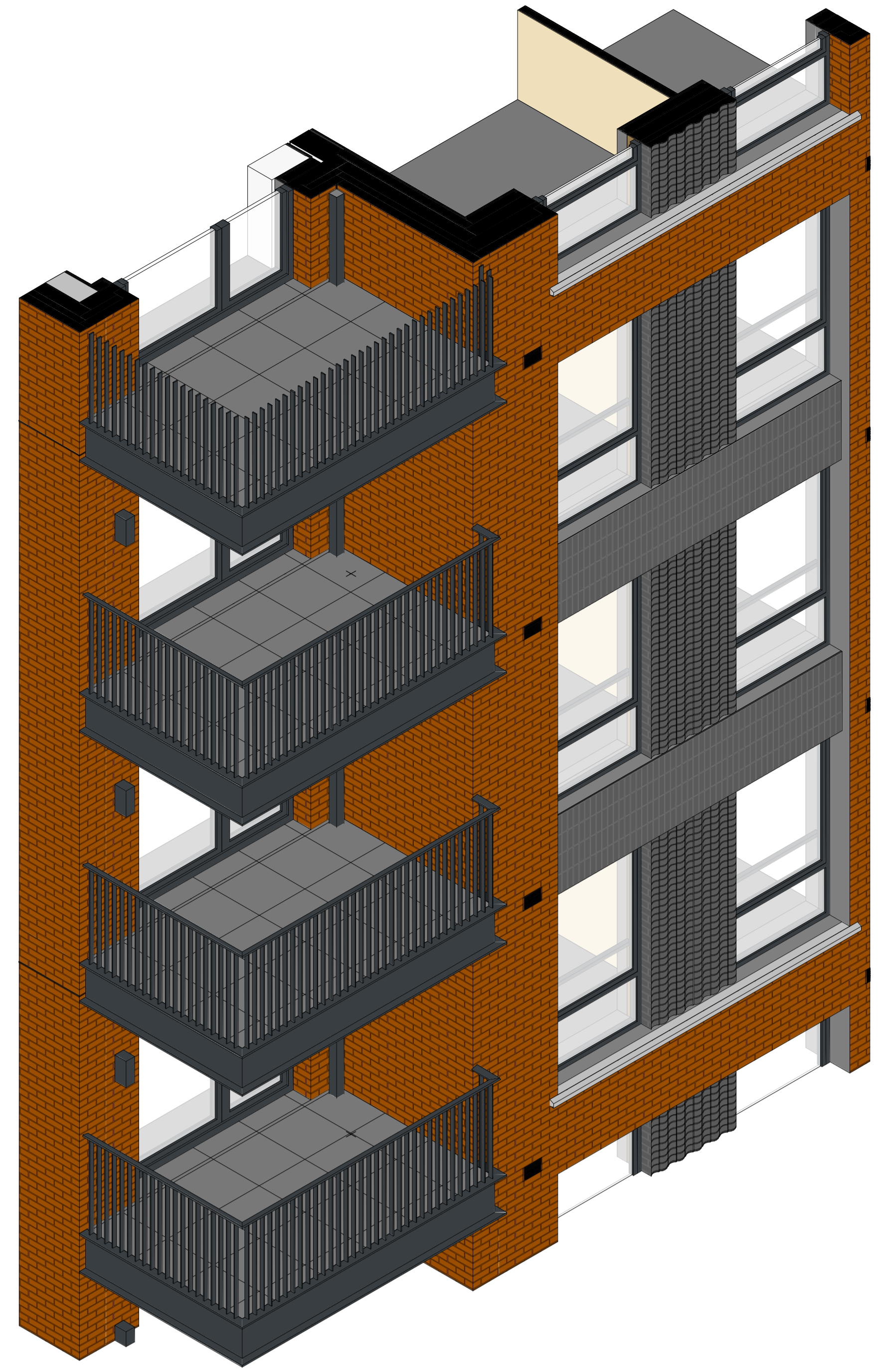
1. Plan
1:50



2. Elevation
1:50



3. Section
1:50



6. 3D View

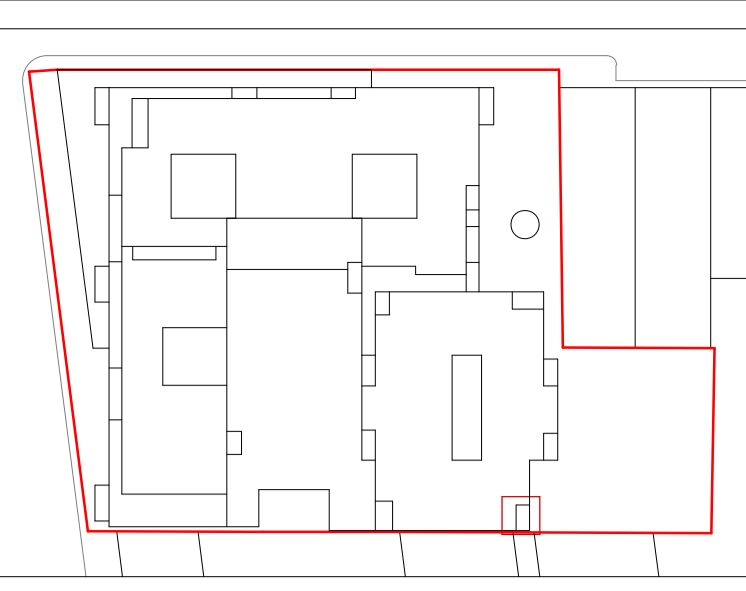


4. Elevation
1:20

Material Key

1. Inward opening windows – RAL 7016
2. Patio doors – RAL 7016
3. Steel balconies and balustrades – RAL 7016
4. Aluminium rainwater pipes – RAL 7016
5. Aluminium cills – RAL 7016
6. Precast concrete cills
7. Precast concrete capping
8. Red Brick façade – Hurstwood Multi
9. Blue Brick façade – Kettle Staffordshire Blue Engineering Brick
10. Curtain walling - RAL 7016
11. Base Spandrel panel - RAL 7016
12. First floor glass spandrel
13. Louvres – RAL 7016
14. Omitted
15. Facing Panel - Perforated Corten Steel
16. Commercial entrance canopies – Corten steel
17. GRC panelling and entrance porticos
18. Retained façade – existing brick wall
19. Steel Portico – RAL 7016
20. Balcony divider - Steel framing, RAL 7016
21. Balcony light - RAL 7016
22. Brick Special Panel - Kettle Staffordshire Blue Wavy Brick Special

Refer to drawing number GLE-AHR-XX-XX-DR-A-08917-Material Palette for further information.



Rev	Description	Date	By	App
C3	Corten steel facing panels and entrance canopies reinstated	27.11.2023	AS	SU
C2	Corten steel elements omitted	21.11.2023	AS	SU
C1	Planning Condition Discharge - Brick Special Panels	30.03.2023	PL	SU
P1	Work in Progress	01.11.2022	PL	SU
TS	Issued for Tender	30.04.2021	KL	



client name	HG Construction
project	49 - 53 Glengall Road
drawing	Bay detail 08
computer file	2020_000475_000
drawing number	GLE-AHR-ZZ-ZZ-DR-A-20908
project number	2020_000475_000
revision	C3 S1
date	27.11.2023
scale	As indicated@A0

This drawing is to be read in conjunction with all related drawings. All dimensions must be checked and verified on site before commencing any work or producing shop drawings. The originator should be notified immediately of any discrepancy. This drawing is copyright and remains the property of AHR.