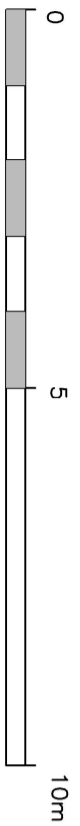
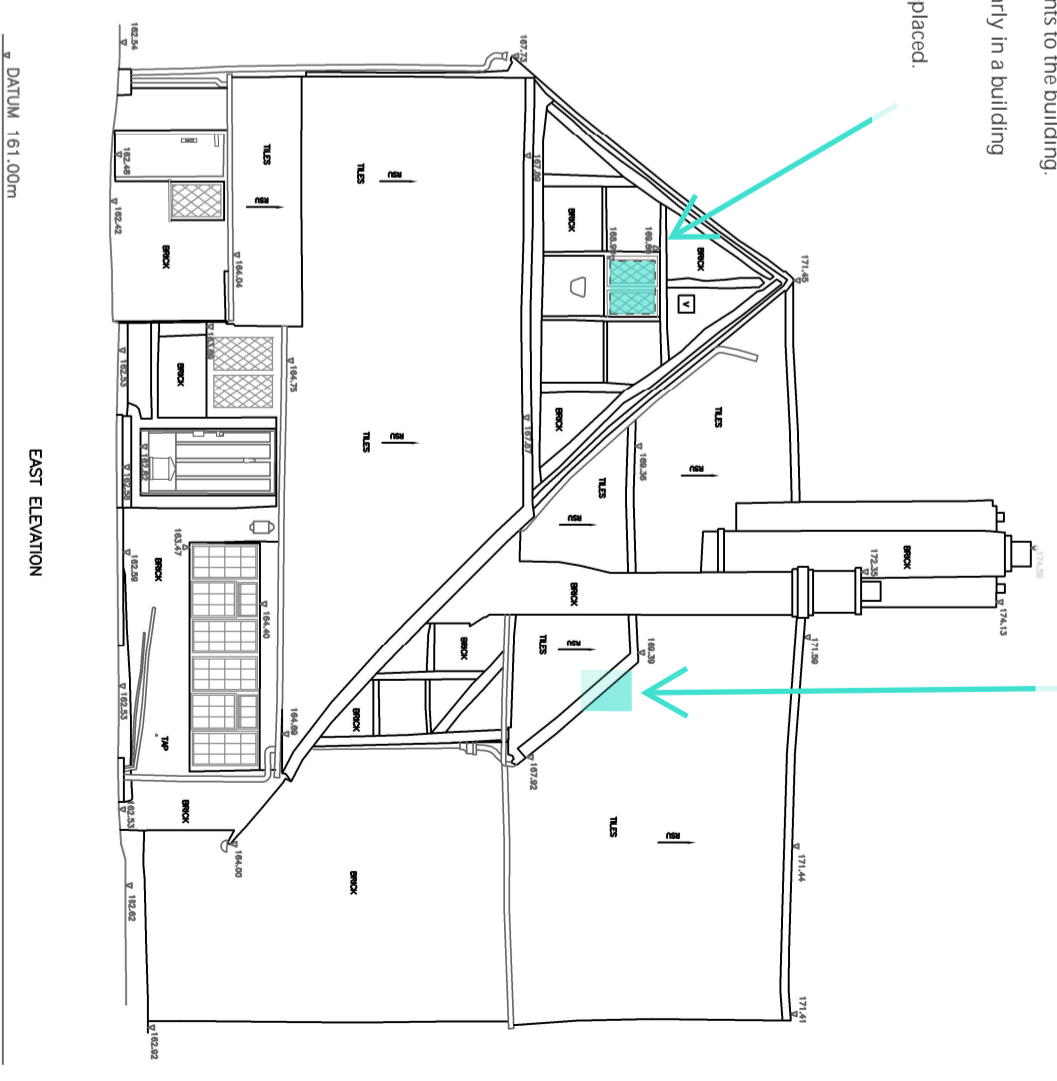
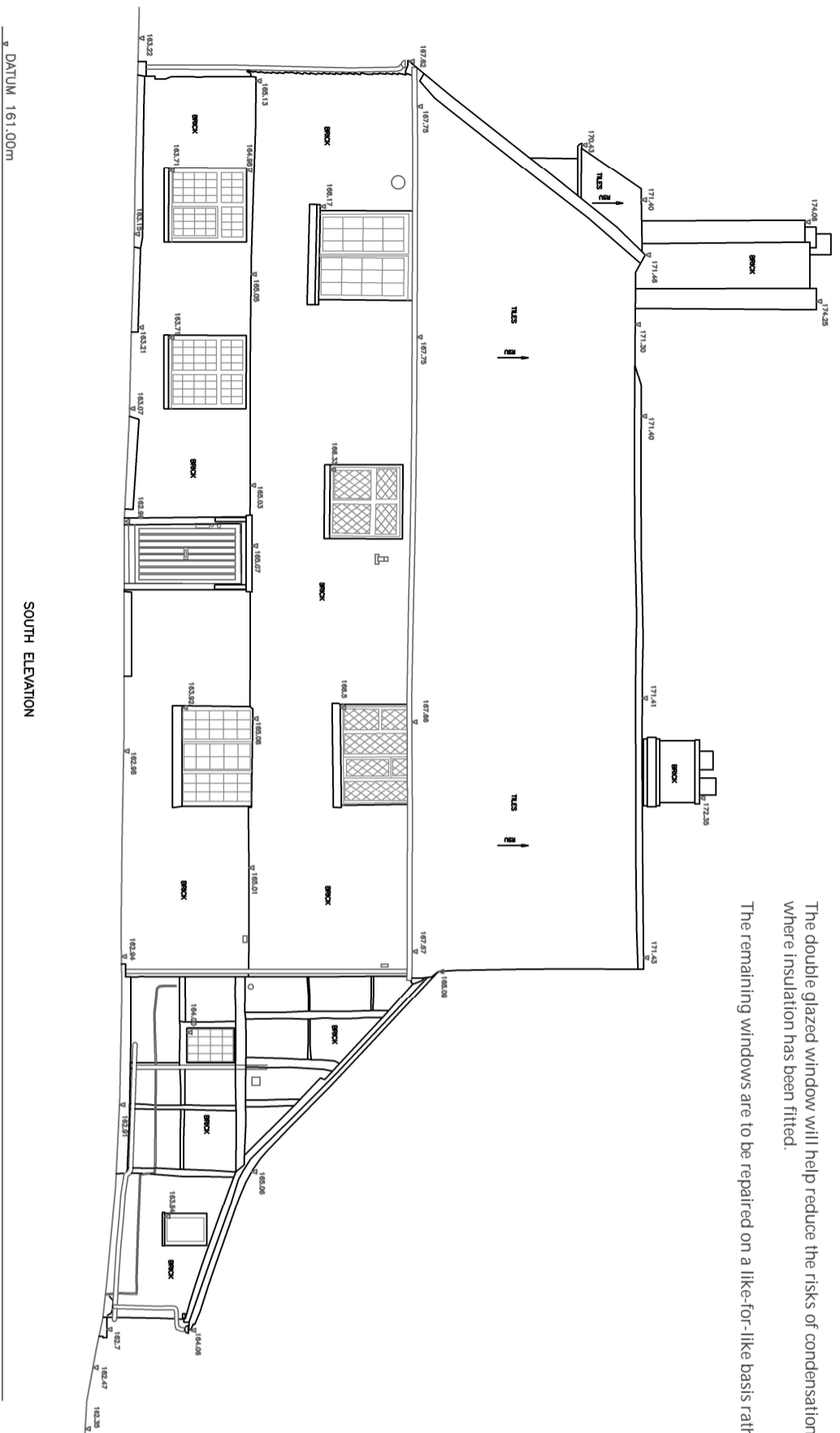


East gable: replacement window:
 The existing window had a history of repair and adaptation and was found to be in an extremely poor condition.


The proposal is for a metal framed double glazed with leaded lights to replace the existing window.
 The proposed window is similar in style and continues the use of metal casements to the building.

The double glazed window will help reduce the risks of condensation, particularly in a building where insulation has been fitted.
 The remaining windows are to be repaired on a like-for-like basis rather than replaced.

Roof light: WR-E-NEW-RL4
 New opening fitted with egress conservation roof light serving the attic floor accommodation
 The approved proposed opening is relocated to the east slope as this provides the most practicable place to allow safe access to the valley gutter for routine maintenance or as a means of escape from the attic/second floor accommodation in the case of an emergency



SCALE 1:100

 THE SURVEY ASSOCIATION		Rev 2 November 2023	
		Date	
Date	APRIL 2022	Drawn	APR
Scale	A3@ 1:100	Checked	BP
Dwg. No.	P922190_E2_2	Job No.	922190
Client	OXLEY CONSERVATION		

Dwg. Proposed Elevations E2
 Proposed alterations to the roof lights
 & replacement windows
 THE OLD FARMHOUSE
 76 WELHOUSE RD., ALTON

SUMO SERVICES
 SOUTH EAST LTD.
 BLOCK B FIRST FLOOR
 BARNETT ROAD
 HERTS
 ENGLAND
 ALDREATH, ALTON
 ENGLAND SG14 2PTJ
 TEL: 01453 544 2973
 FAX: 01453 468 0653
 WWW.SUMOSERVICES.COM