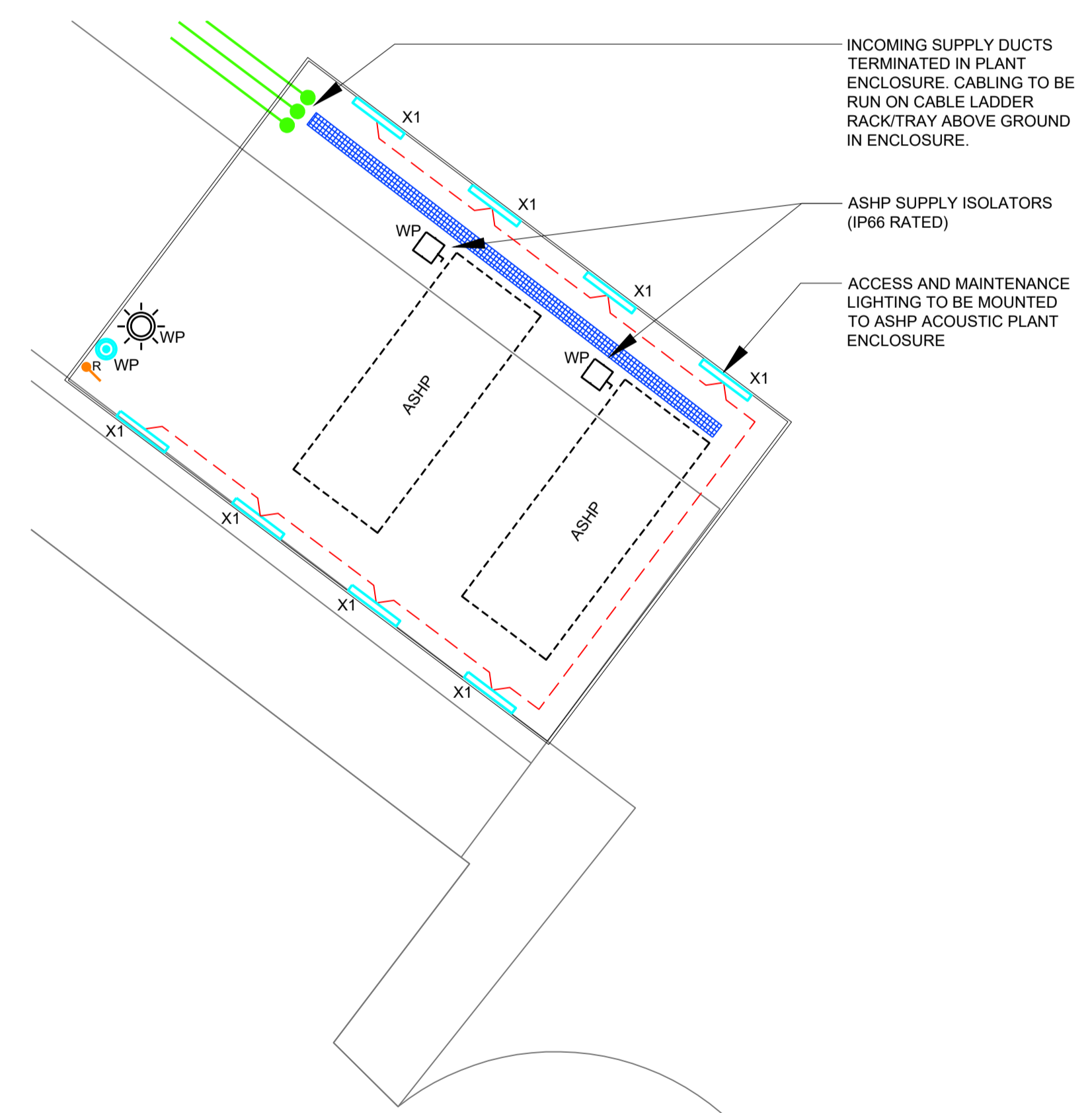


DETAIL 'A' - SPORTS HALL ASHP ENCLOSURE (1:100)



DETAIL 'B' - BLOCKS 'F, G & H' ASHP ENCLOSURE (1:100)

Safety, Health and Environmental Information

IN ADDITION TO THE HAZARDS / RISKS NORMALLY ASSOCIATED WITH THE TYPE OF WORK DETAILED ON THIS DRAWING, NOTE THE FOLLOWING:

Construction	NONE
Maintenance/Cleaning	NONE
Decommissioning/Demolition	NONE

IT IS ASSUMED THAT ALL WORKS WILL BE CARRIED OUT BY A COMPETENT CONTRACTOR WORKING, WHERE APPROPRIATE, TO AN APPROVED METHOD STATEMENT. THIS IS NOT AN EXHAUSTIVE LIST AND REFERENCE SHOULD BE MADE TO THE HEALTH AND SAFETY FILE.

NOTES:

1. THIS DRAWING TO BE READ IN CONJUNCTION WITH: THE PROJECT SPECIFIC M&E SPECIFICATION. THE PROJECT SPECIFIC DESIGNERS RISK ASSESSMENT.
2. THE CONTRACTOR SHALL CONFIRM THE ROUTES OF ALL EXISTING SUB-MAIN CABLES AFFECTED BY THE INSTALL OF THE NEW SUB-MAIN CABLES.

LEGEND:

- EXISTING BUILDINGS
- AIR SOURCE HEAT PUMP PLANT ENCLOSURES
- HV CABLES ROUTE - EXISTING
- LV CABLES ROUTE - NEW
- LV CABLES ROUTE - EXISTING
- IP65 RATED LINEAR LED LUMINAIRE
- LIGHTSWITCH - 'WP' DENOTES WEATHERPROOF
- MANUAL CALL POINT
- ELECTRONIC SOUNDER-BEACON
- ISOLATOR
- CABLE TRAY
- WP WEATHERPROOF - DENOTES IP66 RATED EQUIPMENT

P01	ISSUED FOR INFORMATION	J.N	C.C	24.11.23
Rev	Description	By	App	Date

LINK MEP CONSULTING ENGINEERS

Albany Court
Newcastle Business Park
Newcastle upon-Tyne
NE4 7YB
Tel: (0191) 603 0898
Web: www.linkmep.com
Copyright © Link MEP Consulting Engineers Ltd

Client
NORTHUMBRIA UNIVERSITY

Project Title
COACH LANE CAMPUS DE-CARBONISATION OF BLOCKS F, G, H & SPORTS HALL

Drawing Title
PROPOSED SITEWIDE EXTERNAL ELECTRICAL SERVICES

Scale @ A1	Description/Issued For	Status
1:500	FOR INFORMATION	S3
Drawing Number		Revision
10131-LIN-XX-ZZ-DR-E-60001		P01