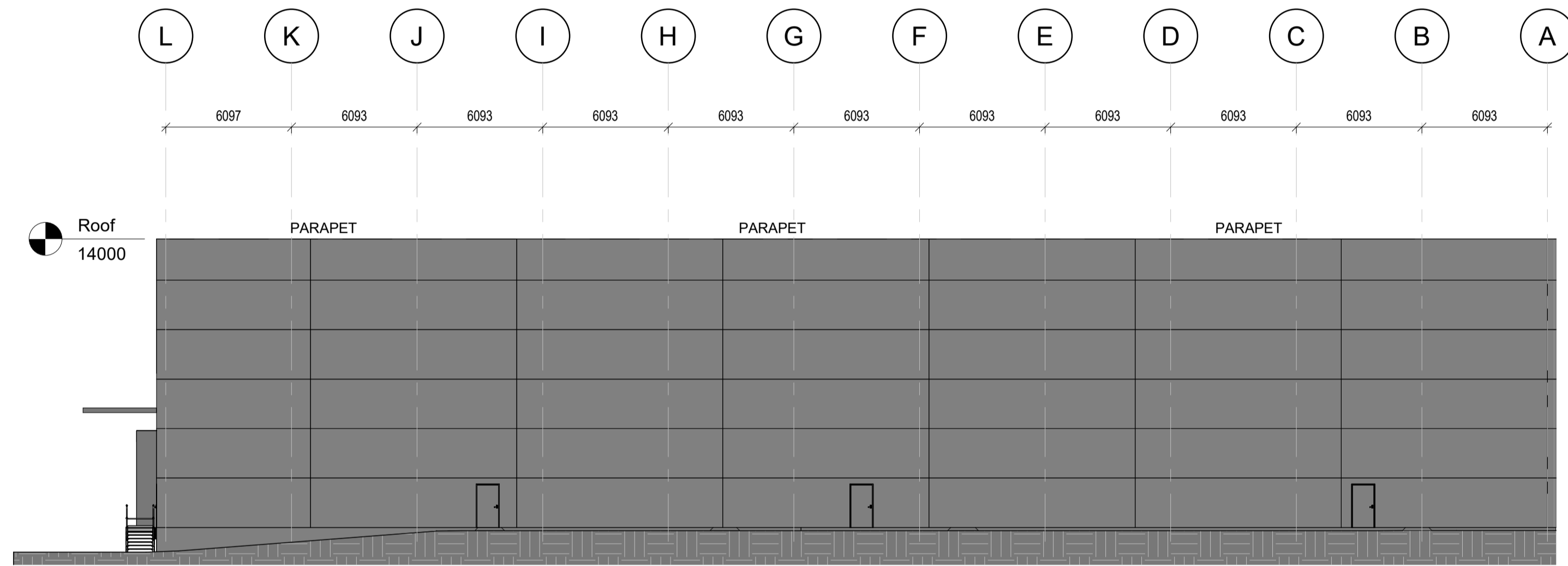
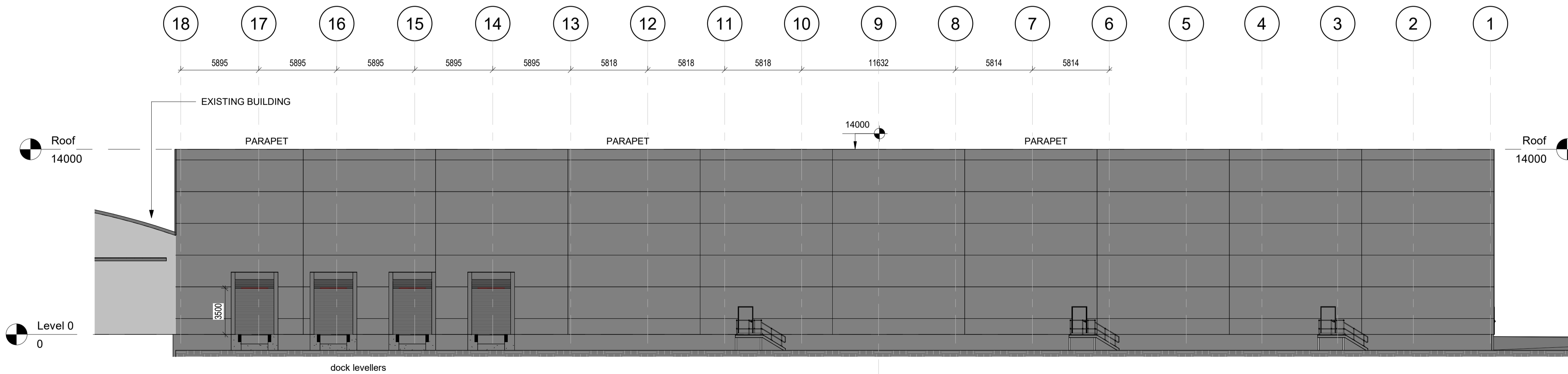


2 Elevation A  
1 : 200



1 Elevation B  
1 : 200



3 Elevation C  
1 : 200

**External walls**  
 Base - 150mm concrete upstand  
 Eurobond Europanel F5 Extra microrib 125mm thick on tophats  
 laid horizontally - Colour Anthracite RAL 7016  
 Cover strip flashing at all joints

**SVC - Switch Rooms - FLT Charging**  
 Travis Perkins - Baggeridge Staffordshire Smooth Blue  
 50mm air gap  
 50mm Celotex CW4000  
 140mm blockwork

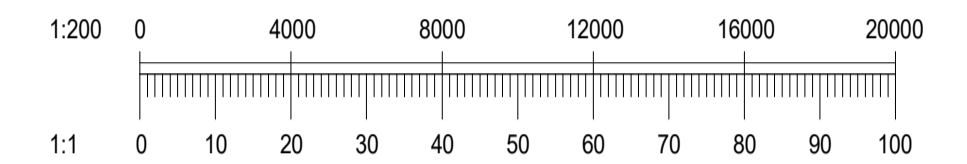
**Roof Cladding**  
 Tata Trisomet 333 system 100mm thick finished in HPS200 Ultra finish externally  
 and internally, external colour Anthracite RAL 7016, internal colour white

**SVC and Switch Rooms - FLT Charging**  
 MOY Protan membrane on 50mm Celotex EL30000 insulation board  
 on VCL on insitu concrete topping laid to fall on Tata ComFlor 51 1.2 gauge  
 permanent metal shutter with edge trims on all sides

New mild steel PPC access stairs on Elevation C - colour Anthracite RAL 7016

New internal gutters and downpipes contractor designed - Anthracite RAL 7016,

Outline Specification  
1 : 50



Rev	Description	Date	Dr by	App by
B	Building footprint increased	06-11-23	JC	SH
A	Existing building shown	28-09-23	JC	SH

Status: Planning				
client				
location	Shieldhall			
drawing	Warehouse Elevations			
author	As indicated@A1	approved by		
project reference	9313	drawing number	WH-A003	rev
				B

 CONSULTING ENGINEERS	Venlaw Building 349 Bath Street Glasgow G2 4AA Tel: 0141-331-2454 Fax: 0141-332-2873 www.csandp.co.uk
--------------------------	--