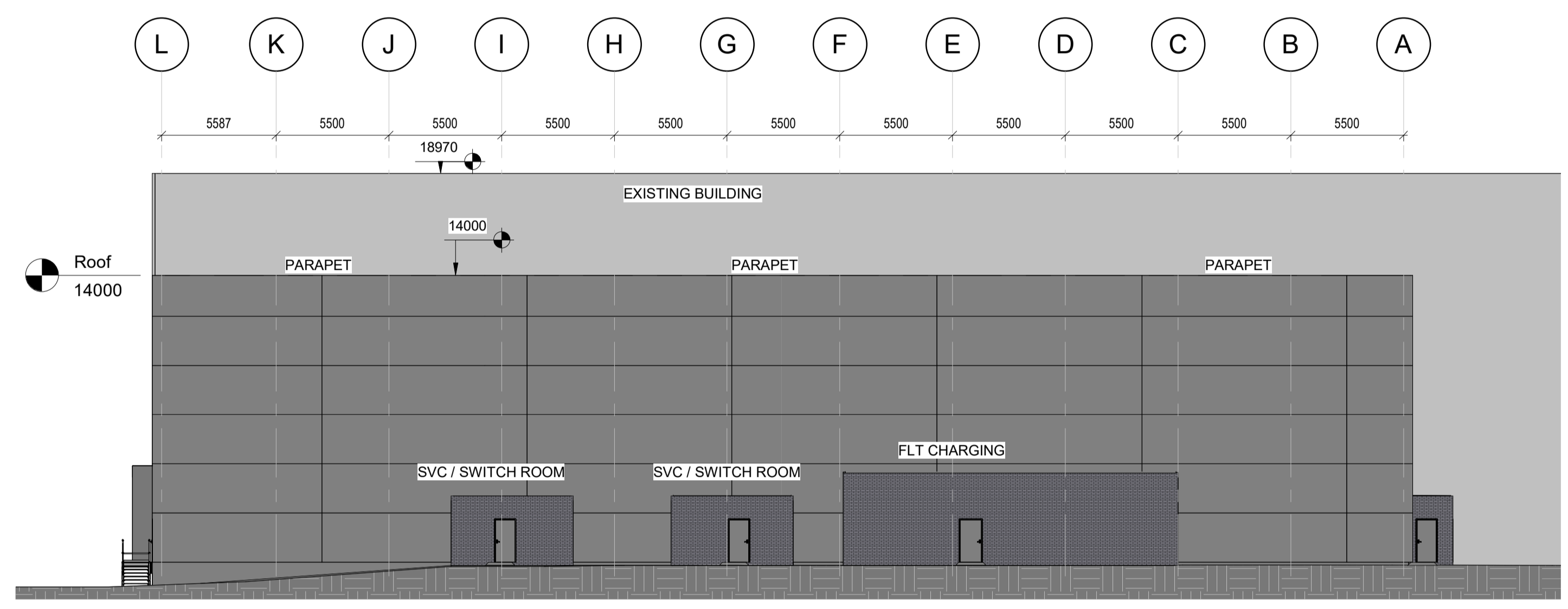
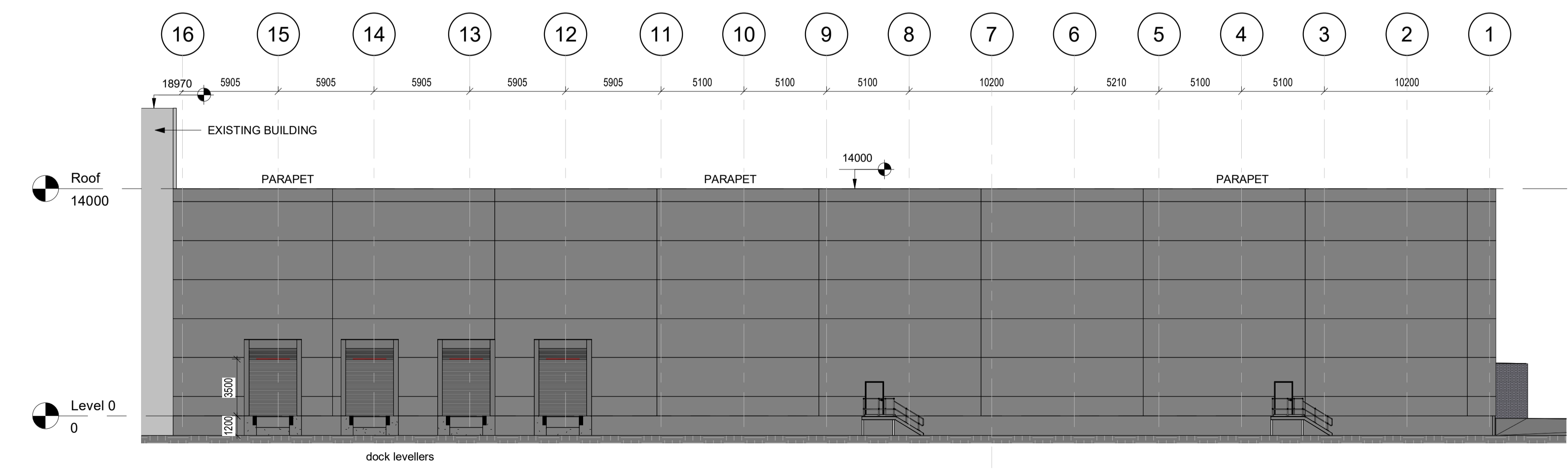


2 Elevation A
1 : 200



1 Elevation B
1 : 200



3 Elevation C
1 : 200

External walls
 Base - 150mm concrete upstand
 Eurobond Europanel F5 Extra microrib 125mm thick on tophats
 laid horizontally - Colour Anthracite RAL 7016
 Cover strip flashing at all joints

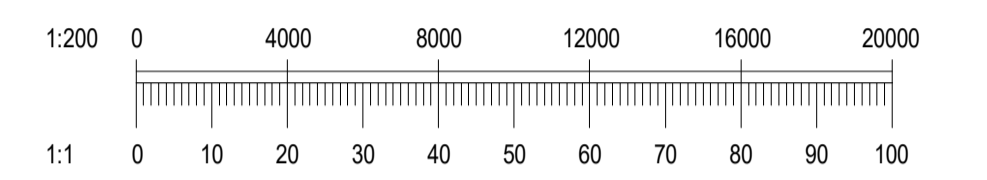
SVC - Switch Rooms - FLT Charging
 Travis Perkins - Baggeridge Staffordshire Smooth Blue
 50mm air gap
 50mm Celotex CW4000
 140mm blockwork

Roof Cladding
 Tata Trisomet 333 system 100mm thick finished in HPS200 Ultra finish externally
 and internally, external colour Anthracite RAL 7016, internal colour white

SVC and Switch Rooms - FLT Charging
 MOY Protan membrane on 50mm Celotex EL30000 insulation board
 on VCL on insitu concrete topping laid to fall on Tata ComFlor 51 1.2 gauge
 permanent metal shutter with edge trims on all sides

New mild steel PPC access stairs on Elevation C - colour Anthracite RAL 7016
 New internal gutters and downpipes contractor designed - Anthracite RAL 7016,

Outline Specification
 1 : 50



Rev	Description	Date	Dr by	App by

Status: Planning

client: **DIAGEO**
INTERNATIONAL SUPPLY CENTRE ENGINEERING

location: Shieldhall

drawing: Warehouse Elevations

project reference: 9313 drawing number: WH-A003

client: **CHARLES SCOTT & PARTNERS**
CONSULTING ENGINEERS

location: Venlow Building
349 Bath Street
Glasgow G2 4AA
Tel: 0141-331-2454
Fax: 0141-330-2973
www.csandp.co.uk