

# Landscape Description Units

## Settled Pastoral Farmlands

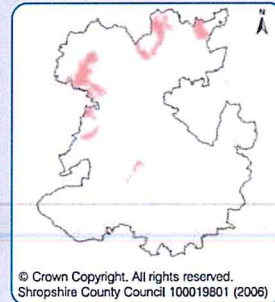


Date: 22/10/2015

# Settled Pastoral Farmlands

## Key Characteristics

- Heavy, poorly drained soils
- Pastoral land use
- Scattered hedgerow trees
- Irregular field pattern
- Small to medium scale landscapes



## Description

Located mainly in the northern and western parts of the county, Settled Pastoral Farmlands are lowland agricultural landscapes. Heavy, often poorly drained soils are one of the defining characteristics of this landscape type and have traditionally been associated with livestock farming. This land use means that the historic pattern of small to medium, sub-regular, hedged fields has been retained in most places.

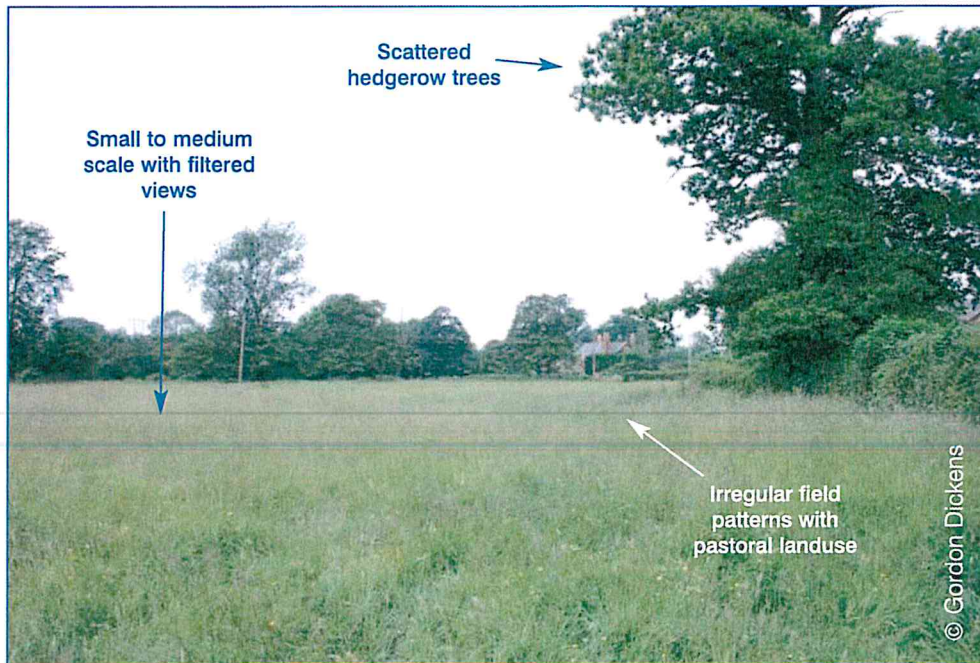
Whilst small, relict pieces of ancient woodland are present in some areas, tree cover is largely provided by scattered hedgerow oaks and Ash trees, along with linear bands of willows and alders along watercourses. Although these are not as densely distributed as they are in

the Timbered pastures, they can be present in significant numbers and, combined with the field size, generate a small to medium scale landscape with predominantly filtered views.

A medium to high density dispersal of farmsteads and wayside cottages, linked by a sinuous network of lanes, represents the prevailing settlement pattern. However, occasional hamlets and small villages also exist in some areas, for example around Kinnerley, south-west of Oswestry.

The irregular field patterns within these landscapes have varied origins. Where the settlement pattern is more clustered, many of the fields derive from the informal, piecemeal enclosure of open fields during the late medieval and early modern



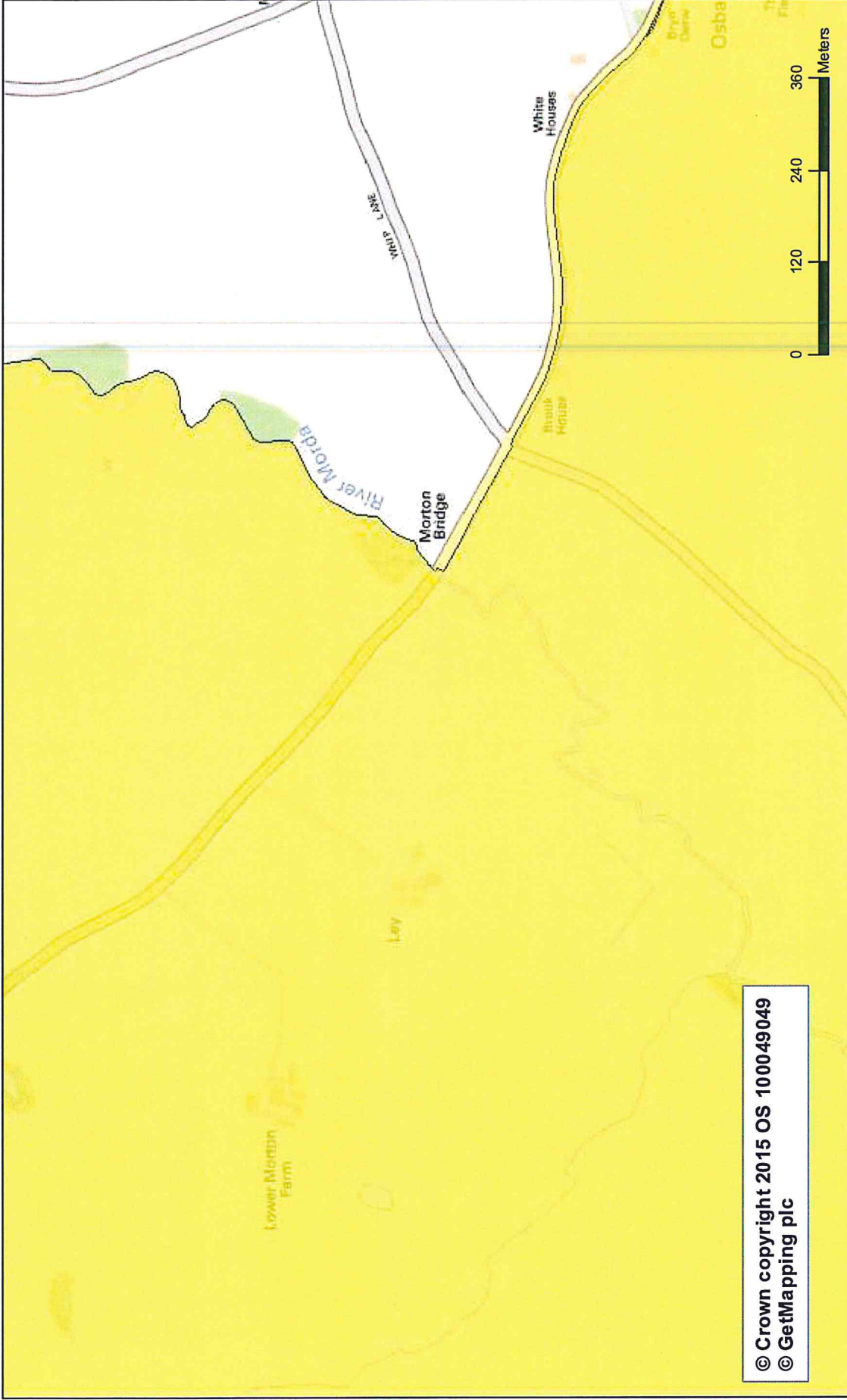


period. This process may have been encouraged by growing specialisation within the agricultural economy, particularly in northern Shropshire where dairying farming became increasingly important during this period.

Beyond the open fields, for example around Winnington Green, near Middletown, and to the south of Maesbury, near Oswestry, the field patterns derives from a mixture of woodland clearance, together with intakes and encroachment in areas of former common rough pasture.

Between the mid-17th and mid-19th centuries rural industries became important in some areas, for example limestone quarrying around Llanymynech.

During the later 20th century agricultural intensification has resulted in widespread pasture improvement and the introduction of intensive arable cropping in some places. Overall, however, the historic field patterns remain largely unchanged.



# Priority Areas for Conservation Action

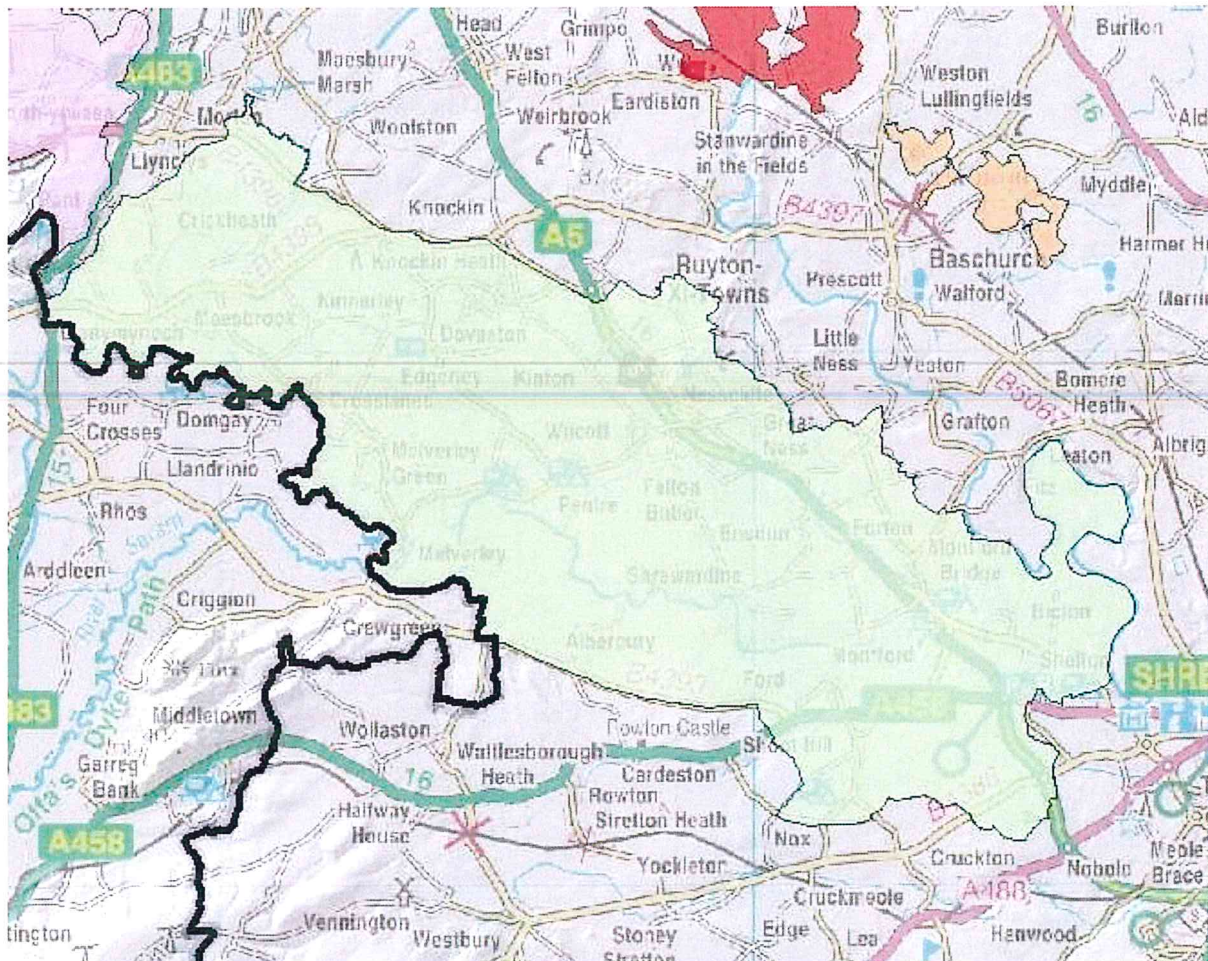
## Severn Vyrnwy Flood Plain



Date: 22/10/2015



## Severn Vyrnwy Floodplain



(c) Crown copyright. All rights reserved. Shropshire Council 100049049. 2010

<b>Lead Partner</b>	<a href="#">Shropshire Wildlife Trust</a>
<b>Lead contact</b>	Jan McKelvey
<b>Potential Partners</b>	<ul style="list-style-type: none"> <li>• Shropshire Wildlife Trust</li> <li>• RSPB</li> <li>• David Edwards, Helen Sudlow or Gavin Wong - Shropshire Council drainage engineers</li> </ul>
<b>Priority</b>	
<b>Status</b>	Underway: Shropshire Wildlife Trust purchased Holybanks near Edgerley in 2008. <a href="#">Click HERE for further information on this new Nature Reserve</a>
<b>Criteria for selection</b>	This area is known to be good for breeding ground nesting wetland birds such as Lapwing. Several plants of floodplains and also the only site for Floating Water-plantain ( <i>Luronium natans</i> ) not in a mere.
<b>Details of boundary</b>	Boundary defined by Shropshire Wildlife Trust.

<b>Potential Actions</b>	
<b>Rationale</b>	•
<b>Key habitats &amp; species</b>	Floodplain Grazing Marsh
<b>Landscape Character</b>	
<b>Constraints</b>	
<b>Progress</b>	
<b>Current BAP actions for area</b>	Actions listed on the Biodiversity Action Reporting System (BARS) for this area are listed (as of 20/07/2010) here: <a href="http://bit.ly/9v9mlw">http://bit.ly/9v9mlw</a>

### Habitats present

The following habitats have geographically specific and quantitative actions listed in BARS:

Habitat	Maintenance	Expansion	Restoration	Achieve condition
<a href="#">Lowland Calcareous Grassland</a>	0	0	1.5	0
<a href="#">Lowland Meadow</a>	18	0	0	0

If you have any proposed actions for these or any other habitats, please contact us or use the feedback form on this page.

### Designated sites in the project area

#### Local Wildlife Sites with evidence of positive management

Site Name	Site Code
Holly Banks Reserve	SJ31.20
Loton Park Water Meadows	SJ31.14
Nesscliff, Great Ness	SJ31.09
Shropshire Union Canal Field	SJ32.17

#### Local Wildlife Sites of unknown management

Site Name	Site Code
Army Camp Grassland	SJ31.15
Cottage Plantation Pools	SJ41.01
Cranberry Moss	SJ32.06
Folly Pool	SJ31.18

Knockin Heath	SJ32.11
Lin Can Coppice	SJ32.07
Loton Park and Quarries	SJ31.13
Morton Pool and Pasture (non SSSI area)	SJ32.01
Oxon Pool	SJ41.09
River Severn - (Milverley to Shrawardine)	SJ31.80
River Severn (Montford - Shrewsbury)	SJ41.80
Shelton Rough	SJ41.02
The Cliffe	SJ32.08
The Knolls	SJ41.08

**SSSI**

Shrawardine Pool SSSI

Lin Can Moss SSSI

River Severn at Montford SSSI

Morton Pool & Pasture SSSI

Crofts Mill Pasture SSSI

**RIGS**

Nesscliffe Hill

Alberbury Road cutting

Alberbury

Preston Montford

**RAMSAR**

Midland Meres & Mosses Phase 2