



December 2021 Permission: Residential Mezzanine Floor Plan.

NB:

For clarity of information and accuracy of information this S96A proposal consolidates the residential mezzanine floor plan and Level 1 Liht Industrial Level Floor Plan of the 2021 Permission into a single Mezzanine Level Floor Plan.



December 2021 Permission: Level 1 (Residential) Floor Plan.



S96A Proposal: Level 1 Floor Plan - BOLAN-AAM-BA-22-DP-AR-07101



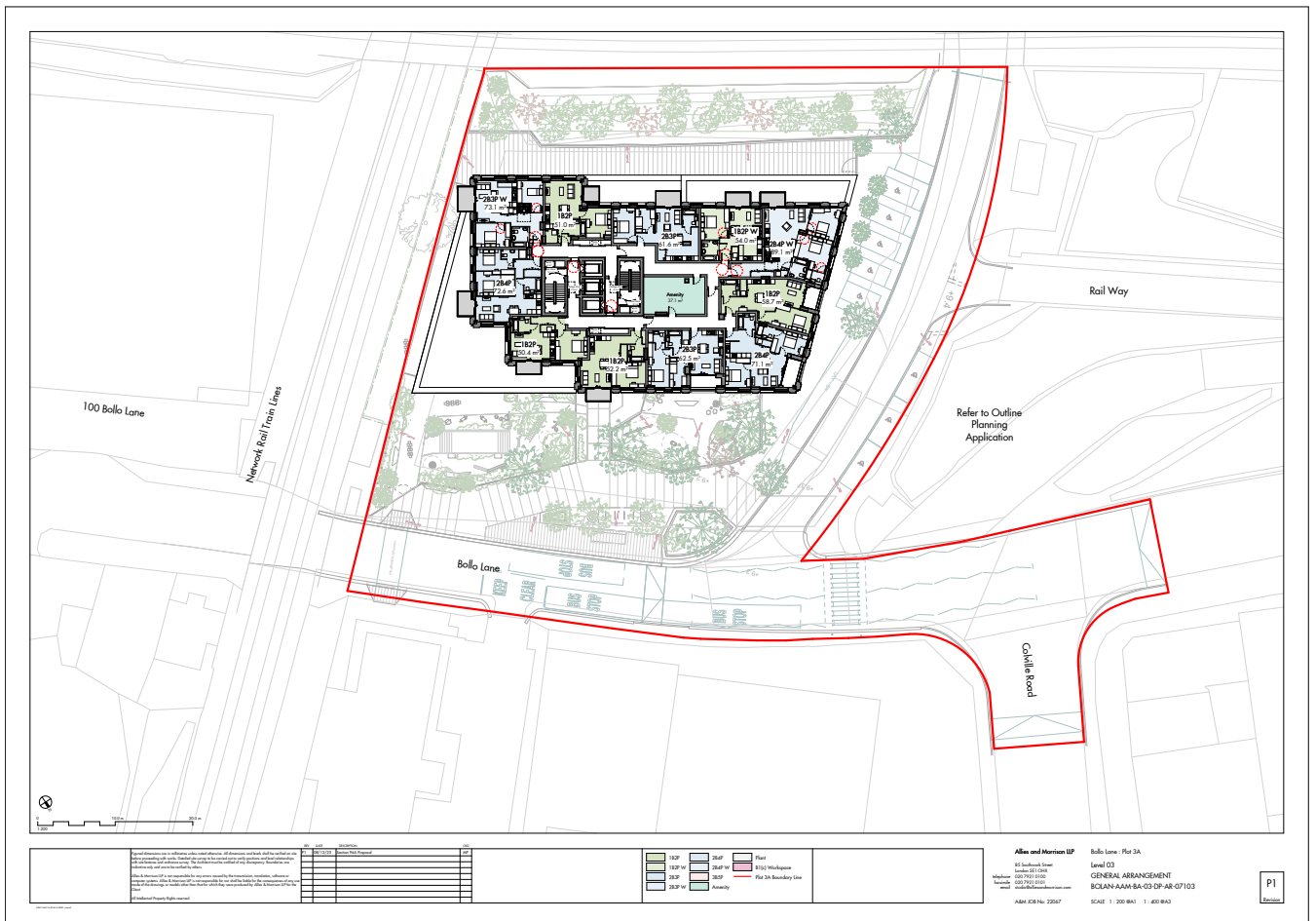
December 2021 Permission: Level 2-3 Floor Plan.



S96A Proposal: Level 2 Floor Plan - BOLAN-AAM-BA-22-DP-AR-07102

NB:

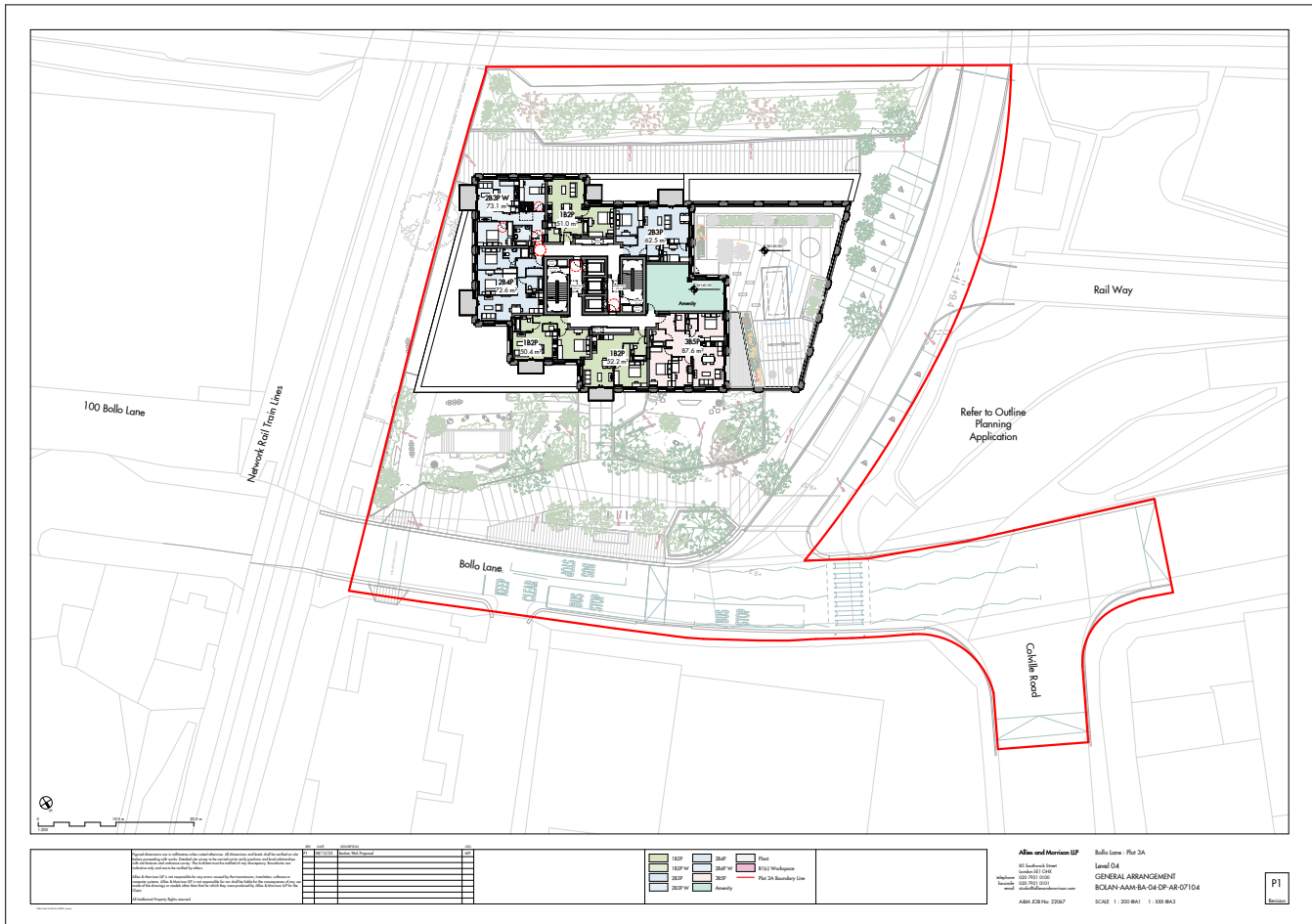
The S96A proposal separates the Level 2-3 floor plan to two individual drawings to distinguish between the terrace and balcony private amenity spaces.



S96A Proposal: Level 3 Floor Plan - BOLAN-AAM-BA-22-DP-AR-07103



December 2021 Permission: Level 4 Floor Plan.





December 2021 Permission: Level 5-11 Floor Plan.



S96A Proposal: Level 5-11 Floor Plan - BOLAN-AAM-BA-22-DP-AR-07105