

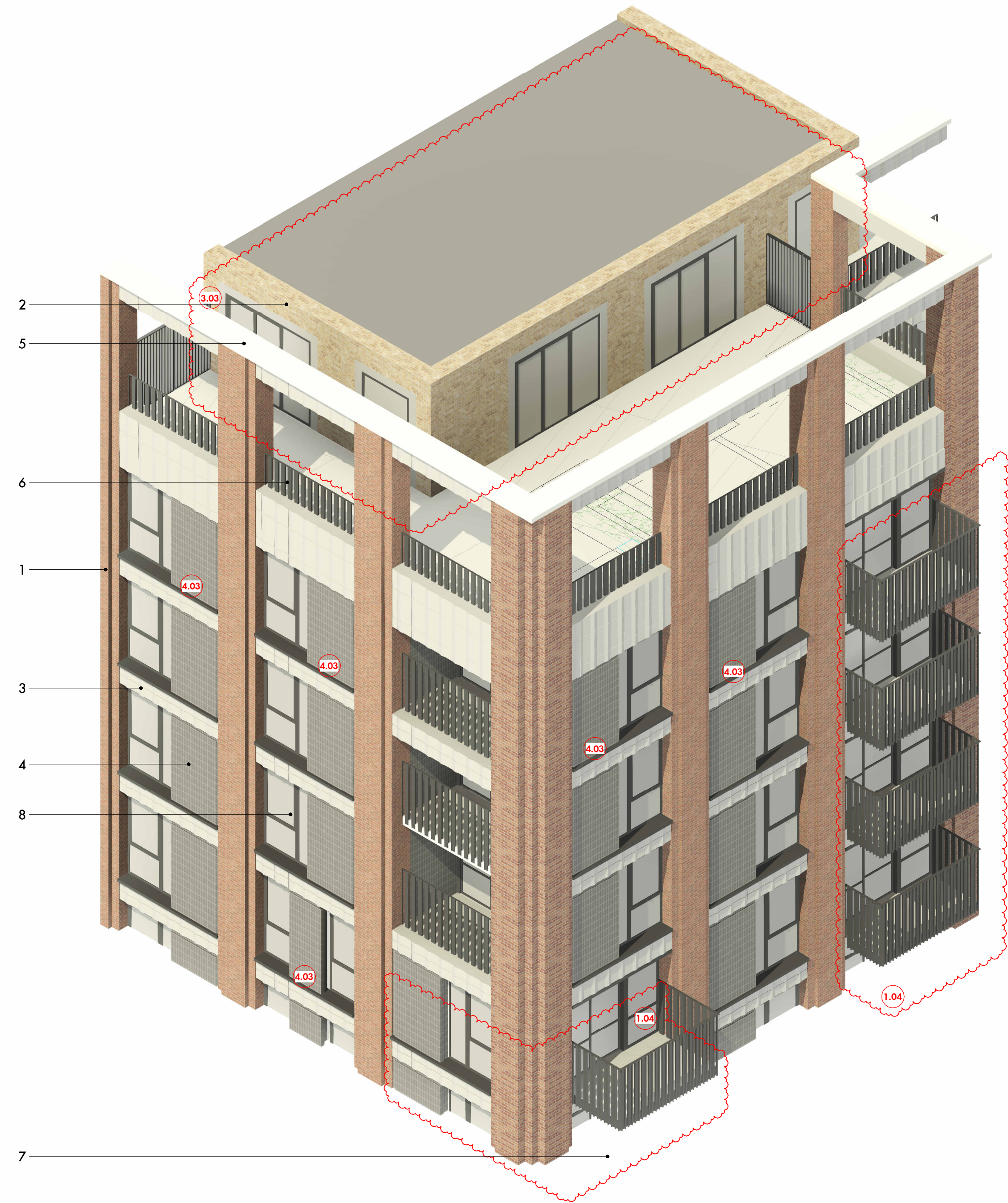
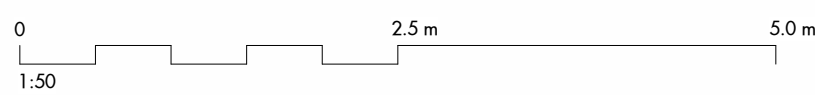
- 1.04 Residential Accommodation: Amendments to the location and/ or size of private balconies in response to the amendments to the lift and stair core.
- 3.03 Residential Amenity: Amendments to the communal amenity space.
- 4.03 Facade: Amendments to the external finishes and materials - Masonry infill panel.
- 4.04 Facade: Amendments to the external finishes and materials - Masonry beam.
- 6.01 Amendments to the Drawing title and number. Please refer to Document issue register.

Plot 3A Material Key

- 1. Red Buff Brickwork
- 2. Warm Grey Brickwork
- 3. Saw-tooth Masonry Spandrel
- 4. Stackbonded Engineering Brickwork
- 5. Cast Stone Parapet Capping
- 6. Metal Post Balustrade
- 7. Metal Soffit
- 8. Window
- 9. Metal Louvre Screen
- 10. Residential Entrance
- 11. Workspace Entrance

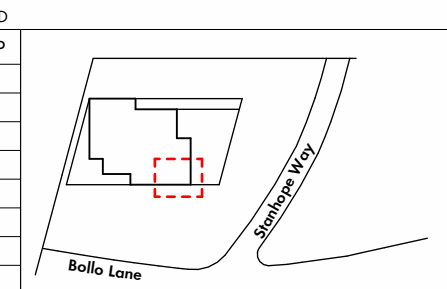


1 Bay Study 03 - Roof Level
1 : 50



2 Bay Study 03 - Roof Level

REV	DATE	DESCRIPTION	CKD
P1	08/12/23	Section 96A Proposal	MP



Allies and Morrison LLP
 85 Southwark Street
 London SE1 0HX
 telephone 020 7921 0100
 facsimile 020 7921 0101
 email studio@alliesandmorrison.com

Bollo Lane : Plot 3A
Bay Study 03 - Roof Level
 3D AND BAY STUDY VIEWS
 BOLAN-AAM-BA-ZZ-DP-AR-07402
 SCALE 1 : 50 @A1 1 : 100 @A3