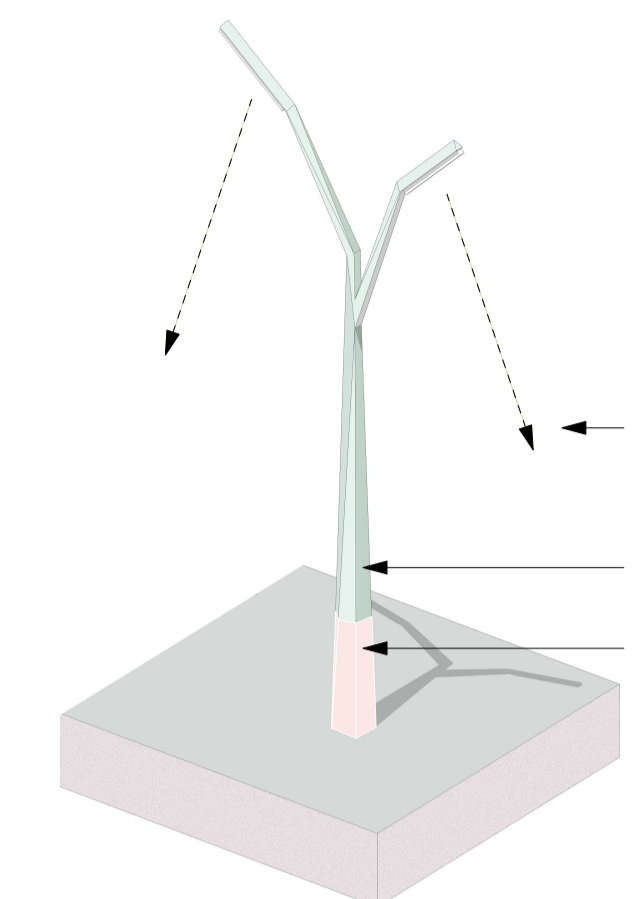


Key Plan:

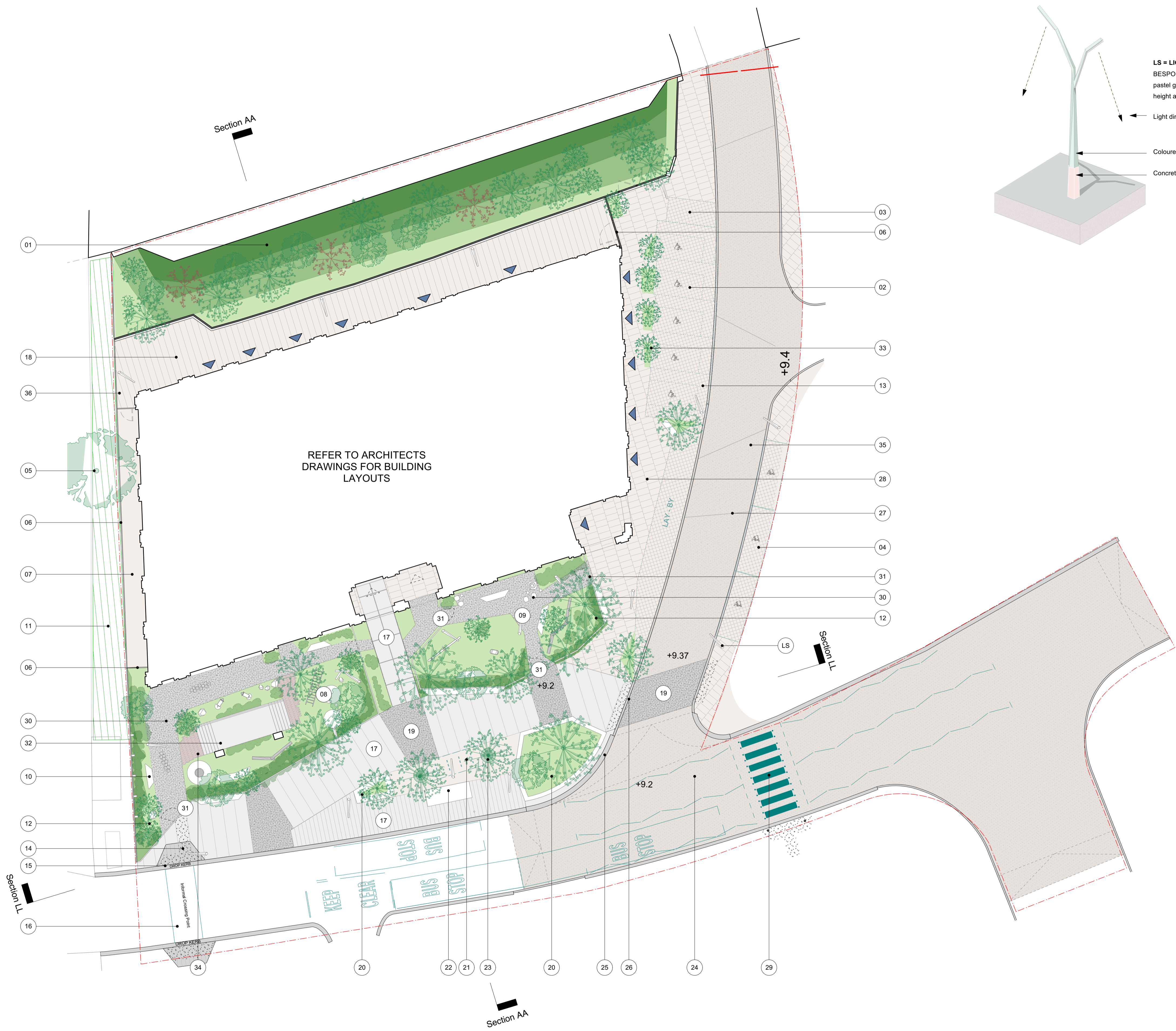


LS = LIGHTING STRATEGY
 BESPOKE STREET LIGHTING DESIGN - Coloured metal in soft pastel green to mimic tree and planter design. Base to be at height and match material of planter pink hue concrete base.
 Light direction at varied heights according to location
 Coloured metal - green pastel tone
 Concrete base to match planter designs

DRAWING KEY

- 01. Planted embankment
- 02. Blue-badge residential parking bays
- 03. Car-club parking space
- 04. Temporary Parking spaces x3. To be removed upon development of Plot 2F and re allocation of spaces.
- 05. Existing Tree. Indicatively shown for reference and inclusion as wind mitigation measure
- 06. Security Fence - Bespoke feature design due to visibility from garden
- 07. Hard landscaping to side of building for access.
- 08. Designated Local (5-11 years) play space
- 09. Designated Doorstep (0-4 years) play space
- 10. Concrete bench (pink hue)
- 11. Existing hedge to add foliage depth. Invasive species detrimental to new trees and species to be assessed for removal
- 12. High quality foliage / shrub with feature fencing
- 13. 100 x 100mm granite setts for drivable areas. Colour and tone similar to adjacent concrete slab paving (28).
- 14. Tactile plugs to add surface texture at crossing points
- 15. Dropped kerb
- 16. Informal crossing point
- 17. Concrete planks - size varies
- 18. Concrete planks - size varies - redish pink hue tone added
- 19. Poured concrete
- 20. Feature planters with integrated seating. 1000mm deep concrete planter and seat with low-shrubbery, trees and herbaceous bushes (refer to 214-BL-L-STE-SEC-407 Typical Tree Pit Details)
- 21. 4 x sheffield stands for 8 x cycles. Visitor parking
- 22. Bus stop - As per TFL spec
- 23. Trees in planters. See DAS for detailed design
- 24. Raised Table
- 25. Kerb edge - Granite 400mm width
- 26. Kerb edge - Granite 200mm width
- 27. Movement joints in concrete. Road way to be poured in-situ concrete with exposed aggregate finish. (High quality finish required with aggregate sizings to be approved via sample pours for sign-off).
- 28. Paving as 1200mm x 600mm concrete paving slabs. (High quality finish required to ensure public realm spatial qualities underfoot. Samples to be approved).
- 29. Zebra Crossing - New
- 30. Garden paths - Exposed aggregate concrete with area of soft rubber play surface finish
- 31. Secure gate to play area
- 32. Play platform within garden - 1m high with stepped access
- 33. 'Tree colonnade' - extra heavy standard trees with tree guard in low-level planting
- 34. Brick inlay to flooring. Colour and tone to be in keeping with architectural brick choice
- 35. Carriageway - in-situ exposed aggregate concrete. Colour and tone similar to adjacent concrete slab paving (28)
- 36. Cycle repair point

LS = LIGHTING STRATEGY
 Lighting strategy to be in keeping with secure by design parameters. Lighting to conform to ILP (Institute of lighting professionals) Level 4. Reduction in congregation areas through correct use of BS539 lighting strategy throughout.



REFER TO ARCHITECTS DRAWINGS FOR BUILDING LAYOUTS

B	Dec 2023	S96A Application
A	05.06.2020	Wind Mitigation Measures Incl.
Rev.	Date	Description
East Architecture, landscape urban design Unit 3.3, Bayford Street Industrial Centre via Elizabeth Fry Road London E8 3SE T 020 7490 3190 F 020 7490 3290 E mail@east.uk.com		
Client Transport for London (TfL)		
BOLLO LANE		
Drawing Detailed Site Plan - Plot 3A		
Job No.	Dwg No.	Revision
214-BL	L-3A-PLN-300	B
Status	Scale	Issue Date
PLANNING	1:200@A1	Dec 2023