

New non-illuminated built-up letters in Aluminum powder coated with 'Tesco' in opal 030 Avery 4509 Red 431, And Express and blips in Opal 030- Avery 5600 LD/082A installed on panel.

New non-illuminated fascia panel, Aluminium powder coated Blue RAL 5005, 30% Gloss with Brown Arizona Oak woodtexstrip to base. Store Address and Est. year vinyl lettering applied to new fascia, Year-100mm Height

SIGN 1
2900x520 mm

SIGN 2
5610x520 mm

New Projecting Sign in Aluminum Powder coated white RAL 9010. Tesco in Opal 030 Avery 4509 Red 431, and Express & blips in Opal 030-Avery 5600 LD/082A blue, translucent non-illuminated acrylic letters applied to face. Sides, top and bottom to be blue as per fascia.

SIGN 8
800x650 mm

SIGN 9
800x1700 mm

Store Directory, dibond externally.
Blue Ref : TRU 35-A7



NORTH ELEVATION

New non-illuminated built-up letters in Aluminum powder coated with 'Tesco' in opal 030 Avery 4509 Red 431, And Express and blips in Opal 030- Avery 5600 LD/082A installed on panel.

SIGN 3
3010x620 mm

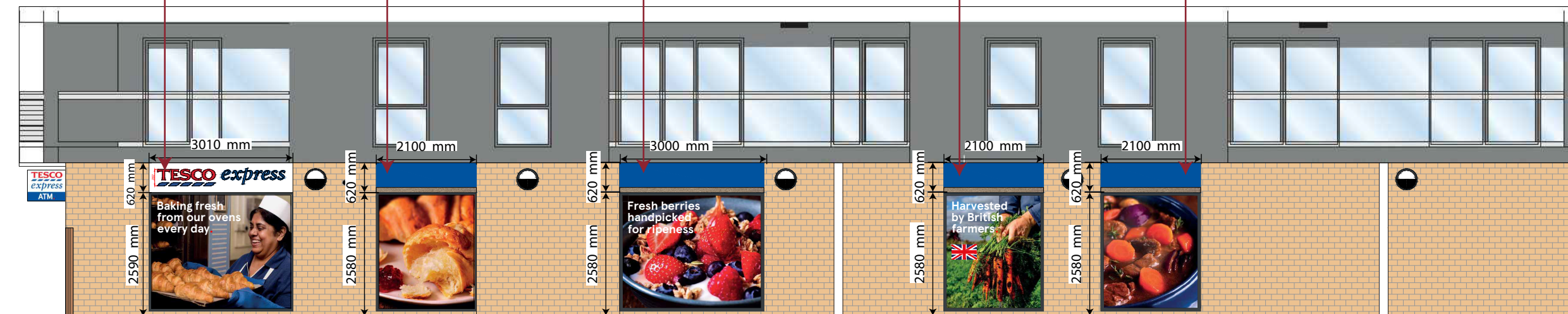
SIGN 4
2100x620 mm

SIGN 5
3000x620 mm

SIGN 6
2100x620 mm

SIGN 7
2100x620 mm

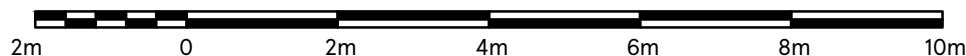
New non-illuminated fascia panel, Aluminium powder coated Blue RAL 5005, 30% Gloss with Brown Arizona Oak woodtexstrip to base.



WEST ELEVATION

SCALE BAR

1:100



DRAWING NO
03_6057_03B

SCALE DATE
1:100@A3 11.12.2023

CHECKED BY
DRAWN BY
DEEKSHA
PRIYANKA

STORE TYPE
EXPRESS

STORE NAME
GREENWICH

CONTENT
PROPOSED ELEVATION_ADV



FEASIBILITY PLANNING
STORE PLANNING DEPARTMENT
PROPERTY SERVICES
HIGHWOODS BUILDING, KESTREL WAY
WELWYN GARDEN CITY, HERTFORDSHIRE, AL7 1GB UK
TELEPHONE : 01707 395150
THE COPYRIGHT AND ALL OTHER RIGHTS IN AND RELATING TO THIS PUBLICATION BELONG TO AND ARE THE SOLE PROPERTY OF TESCO STORES LIMITED. ALL RIGHTS ARE RESERVED. NEITHER THE WHOLE NOR ANY PART OF THIS PUBLICATION MAY BE REPRODUCED OR TRANSMITTED IN ANY FORM OR BY ANY ELECTRONIC OR MECHANICAL MEANS INCLUDING PHOTOCOPYING AND RECORDING OR FROM ANY RETRIEVAL SYSTEM WITHOUT THE PRIOR WRITTEN LICENCE FROM THE OWNER © 1997 TESCO STORES LIMITED