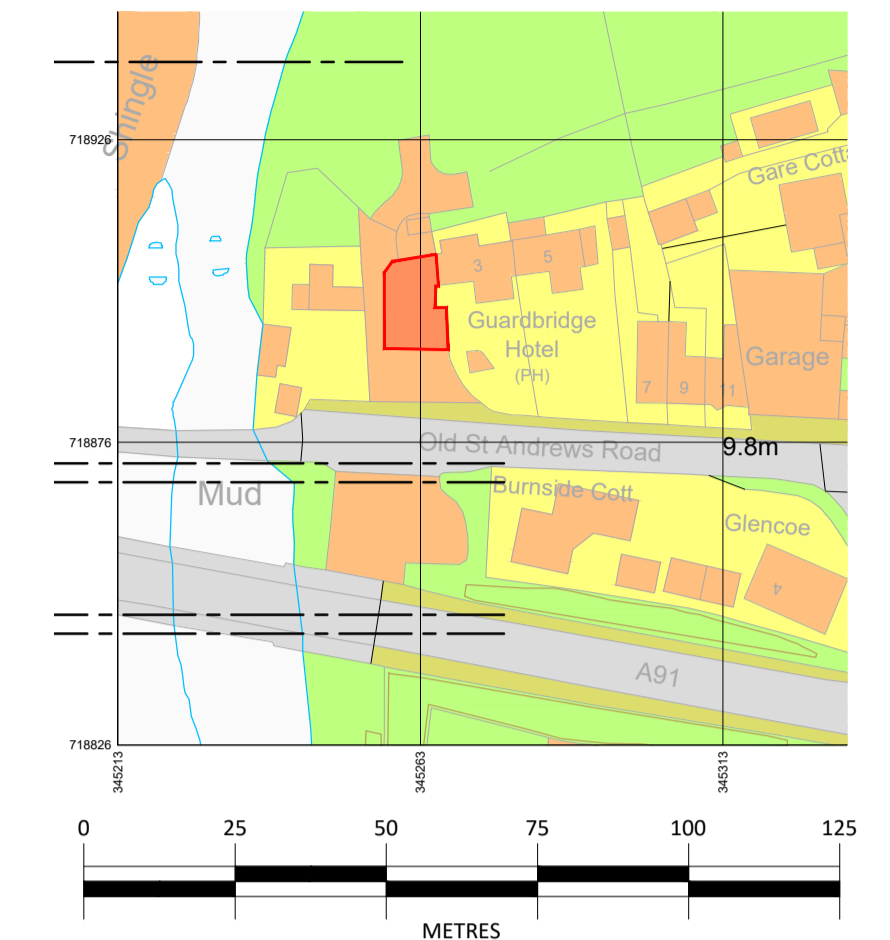
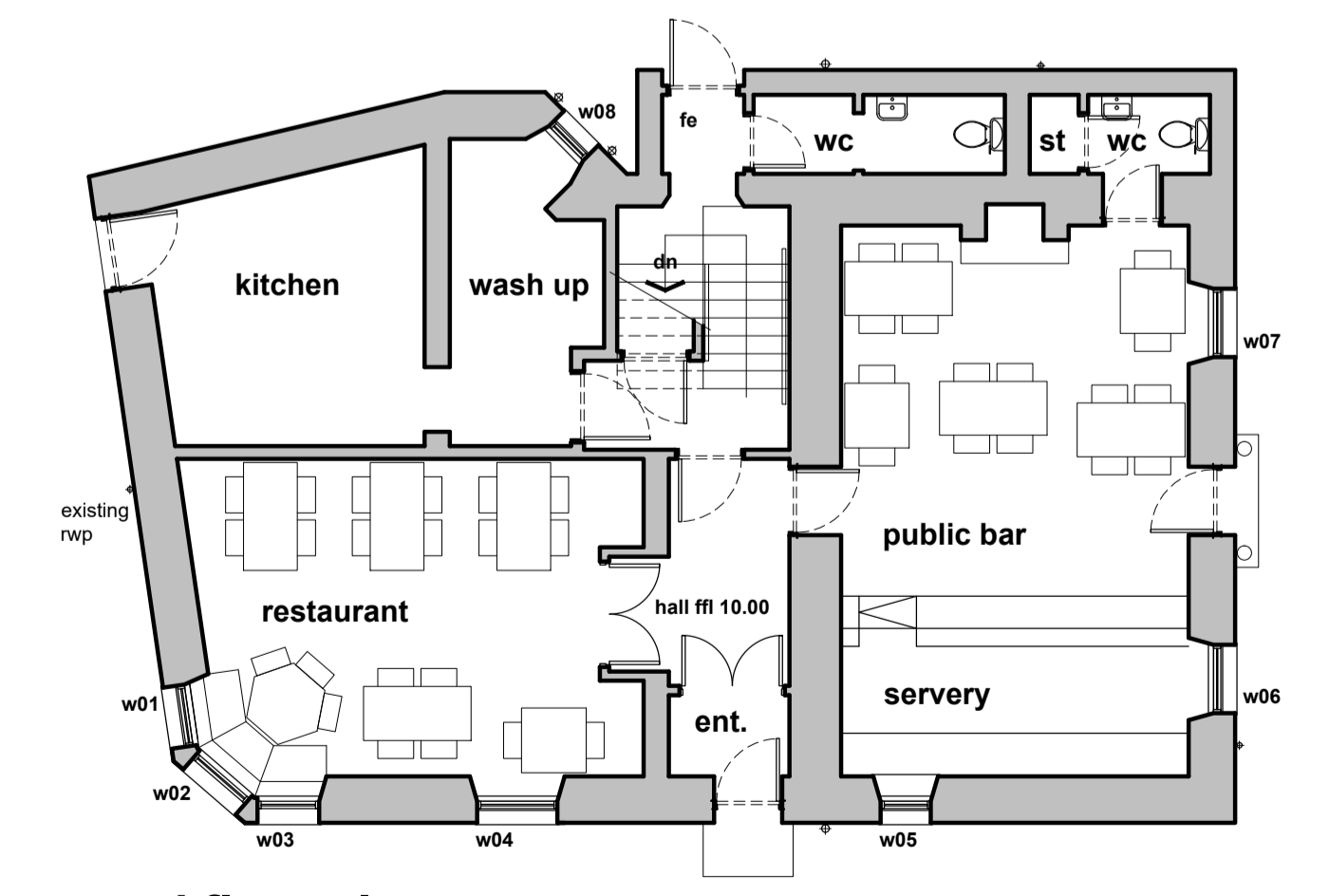


proposed - replacement window details

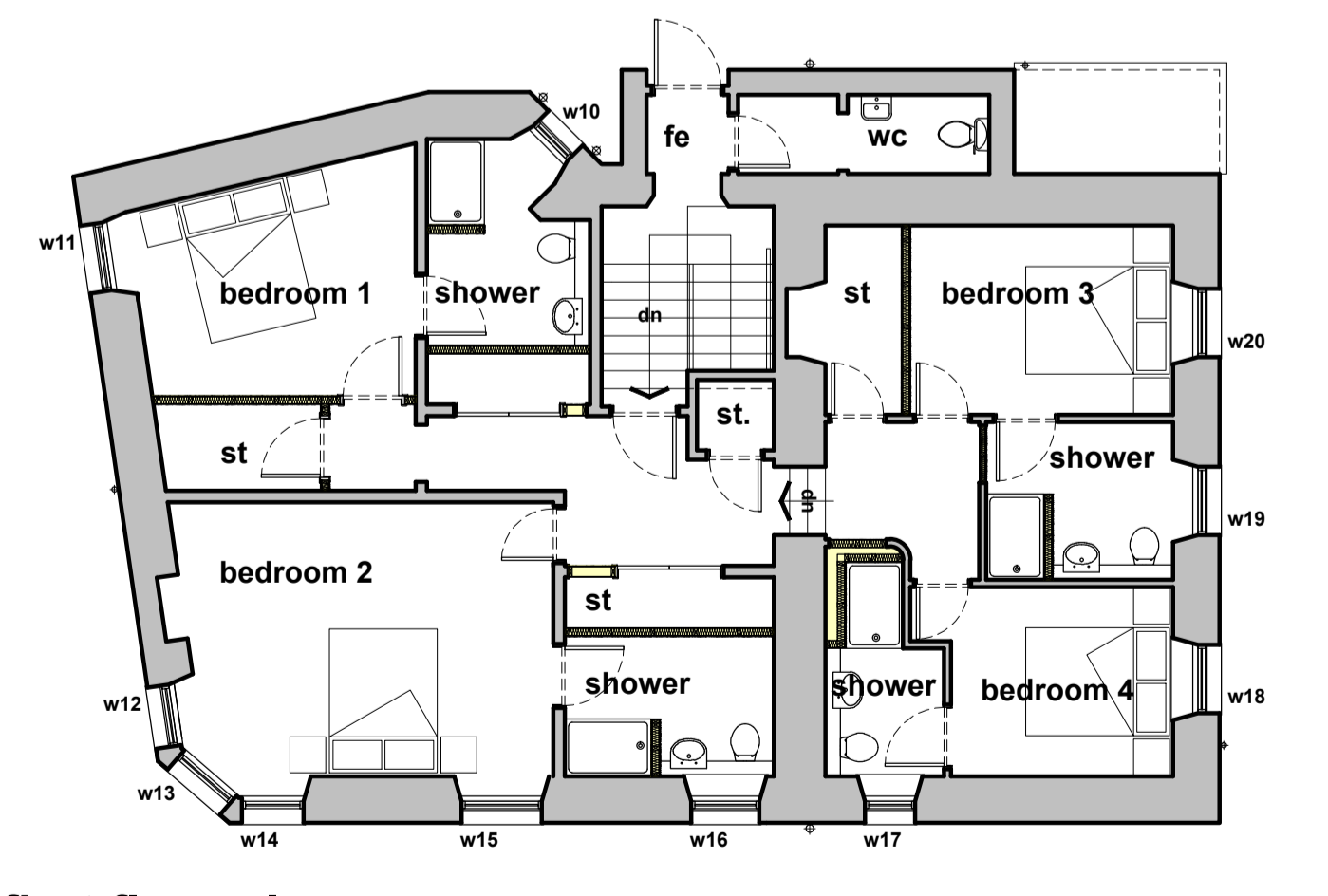
PROJECT: guardbridge inn - various alterations
 LOCATION: 1 Old St Andrews Rd, Guardbridge, St Andrews KY16 0UD
 CLIENT: Claire Dawson
 DATE: Dec 23 SCALE: 1:20 and 1:100 DRAWING: guardbridge
 JOB No: 2586 DWG No: 11



<p>window type 1: w01 w03 (gf) w12 w14 (ff)</p> <p>dimension: approx 860 x 1750mm quantity: 4no. opening method: top/bottom traditional sliding sash+case material: timber - good quality redwood factory finish colour external: ral 9010 (white) colour internal: ral 9010 (white) cill extension: no ironmongery: brass sash fasteners, pulls and sash cord min 12000mm² trickle ventilation: no grooves for plasterboard: no mullion: no finish: double glazed (4/4/4) toughened kite marked: yes (where required) clear/obscured: 4no. clear u-value: approx 1.4 w/m²k manufacturer: TJ Ross Ltd, Glenrothes Heritage Style sash and case windows</p>	<p>window type 2: w02 (gf) w11 w13 w16 (ff)</p> <p>dimension: approx 960 x 1750mm quantity: 4no. opening method: top/bottom traditional sliding sash+case material: timber - good quality redwood factory finish colour external: ral 9010 (white) colour internal: ral 9010 (white) cill extension: no ironmongery: brass sash fasteners, pulls and sash cord min 12000mm² trickle ventilation: no grooves for plasterboard: no mullion: no finish: double glazed toughened kite marked: yes (where required) clear/obscured: 3no. clear, 1no. obscured (w16) u-value: approx 1.4 w/m²k manufacturer: TJ Ross Ltd, Glenrothes Heritage Style sash and case windows</p>	<p>window type 3: w04 (gf) w15 (ff)</p> <p>dimension: approx 1120 x 1750mm quantity: 2no. opening method: top/bottom traditional sliding sash+case material: timber - good quality redwood factory finish colour external: ral 9010 (white) colour internal: ral 9010 (white) cill extension: no ironmongery: brass sash fasteners, pulls and sash cord min 12000mm² trickle ventilation: no grooves for plasterboard: no mullion: no finish: double glazed toughened kite marked: yes (where required) clear/obscured: 2no. clear u-value: approx 1.4 w/m²k manufacturer: TJ Ross Ltd, Glenrothes Heritage Style sash and case windows</p>
<p>window type 4: w05 (gf)</p> <p>dimension: approx 700 x 1150mm quantity: 1no. opening method: top/bottom traditional sliding sash+case material: timber - good quality redwood factory finish colour external: ral 9010 (white) colour internal: ral 9010 (white) cill extension: no ironmongery: brass sash fasteners, pulls and sash cord min 12000mm² trickle ventilation: no grooves for plasterboard: no mullion: no finish: double glazed toughened kite marked: yes (where required) clear/obscured: 1no. clear u-value: approx 1.4 w/m²k manufacturer: TJ Ross Ltd, Glenrothes Heritage Style sash and case windows</p>	<p>window type 5: w06 w07 (gf) w18 w19 w20 (ff)</p> <p>dimension: approx 950 x 1150mm quantity: 5no. opening method: top/bottom traditional sliding sash+case material: timber - good quality redwood factory finish colour external: ral 9010 (white) colour internal: ral 9010 (white) cill extension: no ironmongery: brass sash fasteners, pulls and sash cord min 12000mm² trickle ventilation: no grooves for plasterboard: no mullion: no finish: double glazed toughened kite marked: yes (where required) clear/obscured: 4no. clear, 1no. obscured (w19) u-value: approx 1.4 w/m²k manufacturer: TJ Ross Ltd, Glenrothes Heritage Style sash and case windows</p>	<p>window type 6: w08 (gf) w10 (ff)</p> <p>dimension: approx 680 x 1750mm quantity: 2no. opening method: top/bottom traditional sliding sash+case material: timber - good quality redwood factory finish colour external: ral 9010 (white) colour internal: ral 9010 (white) cill extension: no ironmongery: brass sash fasteners, pulls and sash cord min 12000mm² trickle ventilation: no grooves for plasterboard: no mullion: no finish: double glazed toughened kite marked: yes (where required) clear/obscured: 1no. clear, 1no. obscured (w10) u-value: approx 1.4 w/m²k manufacturer: TJ Ross Ltd, Glenrothes Heritage Style sash and case windows</p>
<p>window type 7: w17 (ff)</p> <p>dimension: approx 700 x 1000mm quantity: 1no. opening method: top/bottom traditional sliding sash+case material: timber - good quality redwood factory finish colour external: ral 9010 (white) colour internal: ral 9010 (white) cill extension: no ironmongery: brass sash fasteners, pulls and sash cord min 12000mm² trickle ventilation: no grooves for plasterboard: no mullion: no finish: double glazed toughened kite marked: yes (where required) clear/obscured: 1no. obscured (w17) u-value: approx 1.4 w/m²k manufacturer: TJ Ross Ltd, Glenrothes Heritage Style sash and case windows</p>		



ground floor plan scale 1:100



first floor plan scale 1:100