

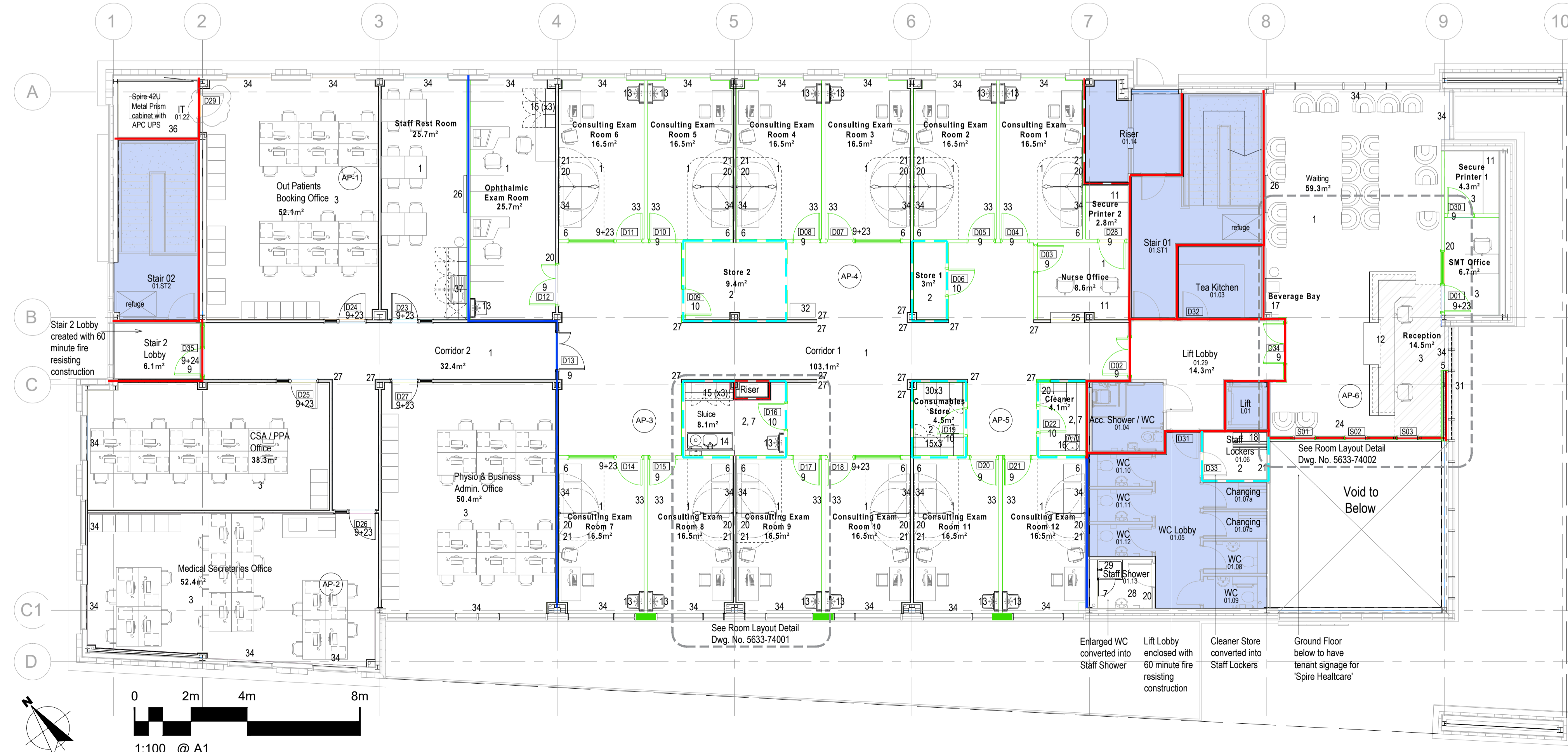
Schedule of Accommodation & Room Data

space	area	floor	walls	ceiling	door	fittings	ventilation (F7 filtration)	temperature °C	lighting (Min Ra 80)	power (13 amp unless stated otherwise)	data	wifi AP (single data, no power)
Corridor 1	103.1m ²	1	4	8	9		supply / extract make up air as required.	19	200 lux floor, UGR1 19	8x wall (cflr & resusc. cart station)		AP Nos. 3, 4 & 5 (ceiling)
Ophthalmic Exam Room	25.7m ²	1	4	8	9+22	15(x3), 20	10 ac/hr supply +ve pressure relative to adjoining space	21 wint. / 23 summ.	300 lux desk, UGR1 19	24x wall dado 2x wall (cflr)	12x wall dado	
Nurse Office	8.6m ²	1	4	8	9	11, 25	24 l/s supply & extract.	18-25	300/500 lux desk, UGR1 19	8x floor (desks)	4x floor (desks)	
Secure Printer 2	2.8m ²	1	4	8	9	11	6 ac/hr extract. -ve pressure relative to adjoining space	18-25	300/500 lux desk, UGR1 19	4x wall (worktop)	2x wall (worktop)	
Consulting Exam Room 1	16.5m ²	1	4 / 6	8	9	13,20,21,33,34,35	10 ac/hr supply +ve pressure relative to adjoining space	21 wint. / 23 summ.	Dimmable 300 lux desk, UGR1 19	4x floor (desk) 3x wall (cflr, lamp, couch)	2x floor (desk)	
Consulting Exam Room 2	16.5m ²	1	4 / 6	8	9	13,20,21,33,34,35	10 ac/hr supply +ve pressure relative to adjoining space	21 wint. / 23 summ.	Dimmable 300 lux desk, UGR1 19	4x floor (desk) 3x wall (cflr, lamp, couch)	2x floor (desk)	
Consulting Exam Room 3	16.5m ²	1	4 / 6	8	9+22	13,20,21,33,34,35	10 ac/hr supply +ve pressure relative to adjoining space	21 wint. / 23 summ.	Dimmable 300 lux desk, UGR1 19	4x floor (desk) 3x wall (cflr, lamp, couch)	2x floor (desk)	
Consulting Exam Room 4	16.5m ²	1	4 / 6	8	9	13,20,21,33,34,35	10 ac/hr supply +ve pressure relative to adjoining space	21 wint. / 23 summ.	Dimmable 300 lux desk, UGR1 19	4x floor (desk) 3x wall (cflr, lamp, couch)	2x floor (desk)	
Consulting Exam Room 5	16.5m ²	1	4 / 6	8	9	13,20,21,33,34,35	10 ac/hr supply +ve pressure relative to adjoining space	21 wint. / 23 summ.	Dimmable 300 lux desk, UGR1 19	4x floor (desk) 3x wall (cflr, lamp, couch)	2x floor (desk)	
Consulting Exam Room 6	16.5m ²	1	4 / 6	8	9	13,20,21,33,34,35	10 ac/hr supply +ve pressure relative to adjoining space	21 wint. / 23 summ.	Dimmable 300 lux desk, UGR1 19	4x floor (desk) 3x wall (cflr, lamp, couch)	2x floor (desk)	
Consulting Exam Room 7	16.5m ²	1	4 / 6	8	9+22	13,20,21,33,34,35	10 ac/hr supply +ve pressure relative to adjoining space	21 wint. / 23 summ.	Dimmable 300 lux desk, UGR1 19	4x floor (desk) 3x wall (cflr, lamp, couch)	2x floor (desk)	
Consulting Exam Room 8	16.5m ²	1	4 / 6	8	9	13,20,21,33,34,35	10 ac/hr supply +ve pressure relative to adjoining space	21 wint. / 23 summ.	Dimmable 300 lux desk, UGR1 19	4x floor (desk) 3x wall (cflr, lamp, couch)	2x floor (desk)	
Consulting Exam Room 9	16.5m ²	1	4 / 6	8	9	13,20,21,33,34,35	10 ac/hr supply +ve pressure relative to adjoining space	21 wint. / 23 summ.	Dimmable 300 lux desk, UGR1 19	4x floor (desk) 3x wall (cflr, lamp, couch)	2x floor (desk)	
Consulting Exam Room 10	16.5m ²	1	4 / 6	8	9+22	13,20,21,33,34,35	10 ac/hr supply +ve pressure relative to adjoining space	21 wint. / 23 summ.	Dimmable 300 lux desk, UGR1 19	4x floor (desk) 3x wall (cflr, lamp, couch)	2x floor (desk)	
Consulting Exam Room 11	16.5m ²	1	4 / 6	8	9	13,20,21,33,34,35	10 ac/hr supply +ve pressure relative to adjoining space	21 wint. / 23 summ.	Dimmable 300 lux desk, UGR1 19	4x floor (desk) 3x wall (cflr, lamp, couch)	2x floor (desk)	
Consulting Exam Room 12	16.5m ²	1	4 / 6	8	9	13,20,21,33,34,35	10 ac/hr supply +ve pressure relative to adjoining space	21 wint. / 23 summ.	Dimmable 300 lux desk, UGR1 19	4x floor (desk) 3x wall (cflr, lamp, couch)	2x floor (desk)	
Stuice	8.1m ²	2	4 / 7	8	10	13,14,15	6 ac/hr extract. -ve pressure relative to adjoining space	19 winter	200 lux, UGR1 22	2x wall (worktop)	2x wall (worktop)	
Cleaner	4.1m ²	2	4 / 7	8	10	16, 20	6 ac/hr extract. -ve pressure relative to adjoining space	19 winter	200 lux, UGR1 22			
Store 2	9.4m ²	1	4	8	10		6 ac/hr extract. -ve pressure relative to adjoining space	21 winter	150 lux, UGR1 22	4x wall		
Store 1	3.0m ²	2	4	8	10		6 ac/hr extract. -ve pressure relative to adjoining space	19 winter	200 lux floor, UGR1 19	2x wall (worktop)		
Consumables Store	4.5m ²	2	4	8	10	15, 30	6 ac/hr extract. -ve pressure relative to adjoining space	19 winter	200 lux floor, UGR1 19			
Areas Sub Total	367.3m ²											

space	area	floor	walls	ceiling	door	fittings	ventilation (F7 filtration)	temperature °C	lighting (Min Ra 80)	power (13 amp unless stated otherwise)	data	wifi AP (single data, no power)
Corridor 2	38.8m ²	1	4	8	9		supply / extract make up air as required.	19	200 lux floor, UGR1 19	1x wall (cflr)		
Out Patients Booking Office	52.1m ²	3	4	8	9+23	34	144 l/s supply & extract.	21 wint. / 23 summ.	300/500 lux desk, UGR1 19	50x floor (desk) 2x wall (cflr)	27x floor (desk)	AP No. 1 (ceiling)
CSA / PPA Office	38.3m ²	3	4	8	9+23	34	120 l/s supply & extract.	21 wint. / 23 summ.	300/500 lux desk, UGR1 19	42x floor (desk) 2x wall (cflr)	21x floor (desk)	
Physio & Business Admin. Office	50.4m ²	3	4	8	9+23	34	144 l/s supply & extract.	21 wint. / 23 summ.	300/500 lux desk, UGR1 19	50x floor (desk) 2x wall (cflr)	25x floor (desk)	
Medical Secretaries Office	52.4m ²	3	4	8	9+23	34	168 l/s supply & extract.	21 wint. / 23 summ.	300/500 lux desk, UGR1 19	58x floor (desk) 2x wall (cflr)	29x floor (desk)	AP No. 2 (ceiling)
Staff Rest Room	25.7m ²	1	4	8	9	26, 34, 37	168 l/s supply & extract.	21 wint. / 23 summ.	200 lux floor, UGR1 22	10x wall (3x tables, cflr, 2x TV, 4x Kitchenette)	2x wall + 1x coax (wall TV)	
Stair 2 Lobby	6.1m ²	1	4	8	9+24		supply / extract make up air as required.	19	200 lux floor, UGR1 19			
IT Room	5.6m ²	36	4	existing	existing		6 ac/hr supply & extract- comfort cooling	19	300/500 lux floor, UGR1 19	2x 16amp commando single phase	IT specialist design	
Areas Sub Total	269.4m ²											

space	area	floor	walls	ceiling	door	fittings	ventilation (F7 filtration)	temperature °C	lighting (Min Ra 80)	power (13 amp unless stated otherwise)	data	wifi AP (single data, no power)
Reception	14.5m ²	1	4, 31	8	9	12, 34x3	288 l/s supply & extract. Comfort cooling	21 wint. / 23 summ.	300 lux, UGR1 19	8x in desk	8x in desk	
Waiting	59.3m ²	1	4 / 5	8	9	17,24,26		21 wint. / 23 summ.	300 lux, UGR1 19	6x wall (2x each cflr, TV, Bev)	2x wall + 1x coax (wall TV)	AP No. 6 (ceiling)
SMT Office	6.7m ²	1	4	8	9	19, 20	12 l/s supply & extract.	21 wint. / 23 summ.	300/500 lux desk, UGR1 19	4x floor box	2x floor box	
Secure Printer 1	4.3m ²	1	4	8	9	11	6 ac/hr extract. -ve pressure relative to adjoining space	18-25	300/500 lux desk, UGR1 19	4x wall (worktop)	2x wall (worktop)	
Lift Lobby	14.3m ²	1	4	8	9		supply / extract make up air as required.	19	200 lux floor, UGR1 19	1x wall (cflr)		
Staff Lockers	3.3m ²	2	4	existing	existing	18, 21	6 ac/hr extract. -ve pressure relative to adjoining space	19 winter	200 lux, UGR1 22			
Staff Shower	3.7m ²	28	7	existing	existing	29, 20	6 ac/hr extract. -ve pressure relative to adjoining space	19 winter	200 lux, UGR1 22			
Areas Sub Total	106.1m ²											

Total floor area 742.8m²



Notes:

All internal signage, loose furniture & loose equipment to be provided & installed by client / tenant. See separate FF&E Schedule.

11 No. Consulting Rooms, Reception desk, 6 No. WCs & Nurse Office to have wireless aid call system installed by client / tenant nominated specialists. Landlord to provide the required power supplies and appoint/subcontract the following specialities as part of the Spire Fit Out works:
1. Alarm Call - by Sanco
2. Structural Cabling - Project Associates

All partitions to occupied rooms to achieve sound-insulation performance of 47dB $D_{nT,w}$ in field testing, or have a system factory performance of 54dB $D_{nT,w}$ to allow for typical installation losses.

Plan Key

- Denotes 60min Fire Compartment.
- Denotes 30min Fire Sub-compartment.
- - - Denotes 60min Fire Protection
- - - Denotes 30min Fire Protection
- Fit out construction additional to previous Landlord scheme
- Fit out requires lining out & window film to curtain walling panel
- AP-6 Spire Wifi AP locations require single data point provision in ceiling

Specification Key

© Copyright: All rights reserved. This drawing must not be reproduced without permission. Do not scale from this drawing. All dimension are in millimetres unless otherwise stated. Any discrepancies should be reported to the Architect.

Metal stud partitions full height to structural soffit NBS K10/ 155 to have skim plaster finish NBS K10/680. All partitions to occupied rooms to achieve sound-insulation performance of 47dB $D_{nT,w}$

Plumbed fitting supplies & wastes as Landlord's mechanical services design. TMV3-D08 mixer valves to all WHBs. Sink/sluice to have hot water above 55oC. Warning notice required.

- 1 Vinyl flooring with PVC inset coving onto walls & fitting plinths. NBS M50/153A & 771. White oak long plank pattern.
- 2 Woodland grey colour none slip vinyl flooring with integral coving & capping up onto walls & fitting plinths. NBS M50/151A.
- 3 Lunar grey colour carpet tile NBS M50/170
- 4 White colour diamond emulsion paint on skim plaster finished partition walls NBS M60/110 (Reception / Waiting feature colours TBC)
- 5 Graphics to wall & window behind reception desk by Spire Healthcare
- 6 Wall corner behind couch to 1220mm high x 2200mm-1000mm long wall protection sheet NBS P20/170B
- 7 Welded PVC sheeting wall protection to 1.5m height NBS M50/111 (full height in staff shower)
- 8 Modular suspended ceiling system NBS K40/115
- 9 White oak HW veneer & HW frame doorset NBS L20/230A
- 10 PVC encapsulated doorset, white leaf & grey frame NBS L20/410A
- 11 Fitted worktop desks NBS N10/133A
- 12 Purpose made reception desk N10/110A. Hearing induction loop, 8x Power & 8x data feeds into socket outlets - locations TBC.
- 13 New TMV CWHB on NBS N13/31 on half height IPS with lid sloping back to wall NBS K32/16.
- 14 Wall mounted slop hopper with sink bowl. NBS N13/27B (right hand) S6551(MY) on full height IPS NBS K32/16
- 15 Base cupboard, worktop & wall cupboards with sloping lid, movable shelves (2 No. each) NBS N10/131
- 16 Cleaner Room fittings: Janitorial Unit NBS N13/26 on half height IPS NBS K32/16, COSHH cupboard NBS N10/354A, Equipment holder NBS N10/364, 2x wall cupboards with sloping lid, movable shelves (2 No. each) NBS N10/131, 2 tier spur shelving to long wall.
- 17 Purpose beverage station unit N10/111. Potable water & power supplies required for client supplied hot drink vending unit going on top & free standing water dispenser.
- 18 New single staked locker & seat bench NBS N10/125A & 125B
- 19 Shelves NBS N10/160A
- 20 Coat hooks NBS N10/210A on SGL surface pattress
- 21 1600x600mm mirror NBS N10/270
- 22 Komfort Polar 100 double glazed screen, none fire rated, integral blinds
- 23 Komfort Polar 100 double glazed screen, none fire rated, band film manifestation
- 24 60 minute fire rated wall with 3 No. Komfort Defence E60 single glazed screen panels, band film manifestation
- 25 Counter cut out in wall 1200w x 1100h set 1000 off floor with 375x1200 solid surface cill
- 26 Power & data feed (for 60" screen & bracket by client)
- 27 Surface and flush mounted corner guards to FFL+1200 height, P20/170D
- 28 Vinyl floor finish as M50/155A
- 29 Shower fittings: tray NBS N10/41A, shower N10/41, enclosure N10/42, basket N10/44
- 30 New floor plinth mounted tall cupboard with storage basket drawers & doors. Full height infill lid. NBS N10/131
- 31 Existing glazed curtain wall section requires lining out in order to achieve the following:
a) 60 minute fire resisting panel to return minimum of 1000mm from the line of the new balcony fire rated screen. Window sections behind to have dark grey obscuring film to inner pane. Friction fitted & nail secured fire cavity barrier to gaps between panel returns and nearest window mullions to close off all potential cavities.
b) Remaining width to take client installed graphics behind reception desk
- 32 Client resuscitation trolley charging bay requiring twin wall mounted power sockets
- 33 Ceiling suspended curtain track NBS N10/230A. (Curtains by client)
- 34 Manual crank operation roller blinds to these areas (Fabric TBC)
- 35 Giamox Luxonic LHH LED wall mounted examination lamp.
- 36 Anti-static vinyl sheet flooring with integral coving & capping up onto walls. NBS M50/152A.
- 37 HPL worktop with 4 No. base cupboards, with shelves, plinth front, fridge recess. 5 No. wall cupboard with 2 no. shelves. Sloping top. SS sink & drainer with hot & cold kitchen lever taps. Domestic range. EG Howdens. Topps Simply gloss white tiles 250x330 splashback to wall cupboard underside. Dark grey grout. Potable water & power supplies required for client supplied hot drink vending unit going on top & free standing water dispenser.
- 9+22 Door leaf as NBS L20/230A in Komfort Polar 100 frame, integral blinds to glazed side screen
- 9+23 Door leaf as NBS L20/230A in Komfort Polar 100 frame, band film manifestation to glazed side screen
- 9+24 FD60s door leaf as NBS L20/230C in Komfort Defence E60 frame, band film manifestation to glazed side screen

Revision	Description	Date	Drawn	Checked
T3	IT Room door rehung. Corner wall protection identified.	27-06-23	SB	
T2	Fittings & services revised following client comment	23-05-23	SB	
T1	First Issue. Issued for Comment/Approval.	19-05-23	SB	

STAGE 4 - EMPLOYERS REQUIREMENTS

Halliday Meecham Architects Limited
111 Piccadilly Manchester M1 2HY
+44 (0)161 661 5566
4 Devonshire Street London W1W 5DT
+44 (0)203 440 5175
hma@hallidaymeecham.com
www.hallidaymeecham.com



Client:	Spire Healthcare				
Project:	Spire Norwich Hospital - Ella May Building				
Location:	Norwich Research Park				
Drawing:	First Floor Proposed Plan				
Scale @ A1	Scale @ A3	Date:	Drawn:	Checked:	Job No.
1:100	1:200	MAY 23	SB	-	5655
					Drawing No.
					20101
					Revision
					T3