



- SURVEYORS NOTES**
- UNABLE TO LOCATE POWER FEEDS FOR PETROL ISLANDS DUE TO OBSTRUCTED COVERS AND SERVICE POINTS.
 - UNABLE TO TRACE FUEL, FILL AND VENT PIPES DUE TO PIPE CONSTRUCTION, HEAVY TRAFFIC AND POOR GROUND CONDITIONS.
 - UNABLE TO ADD INFORMATION FROM TANK SCHEDULE - STORE 'LOST' DOCUMENT.

DRAWING NOTES

COPYRIGHT ©
This drawing and the details herein are the copyright of MBH Design Studio Ltd. and must not be reproduced, altered or passed to any third party without prior written consent.

This drawing has been produced for the project listed below, is submitted in support of this application to the Local Planning Authority and is not intended for use by any other person or for any other purpose.

Every effort has been made to ensure the accuracy of these drawings, however MBH Design Studio Ltd. accept no responsibility for any discrepancies arising from the reuse of survey information and preliminary drawings commissioned by the Applicant from others.

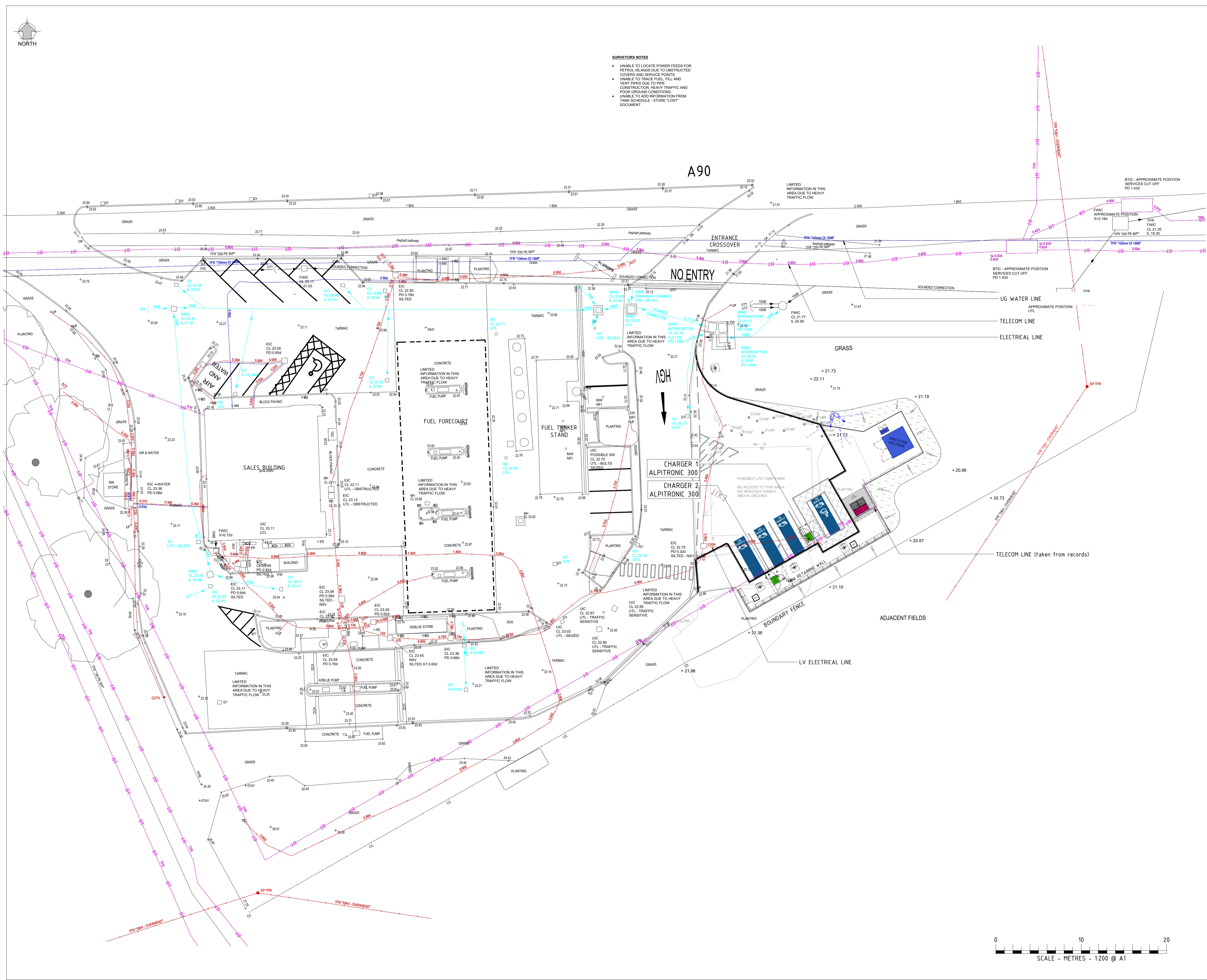
KEY

| | |
|----|-----------------------------|
| E | UNDERGROUND ELECTRICAL LINE |
| S | STORM WATER LINE |
| V | FUEL VENT LINE |
| F | FOUL WATER LINE |
| W | WATER LINE |
| BT | TELECOMS LINE |

BULLIONFIELD SF CONNECT - PROPOSED EV FEASIBILITY LAYOUT - 11007 - EV01 - HYC - Rev A

INTERSECT SURVEYS - 1007048-001 GPR UNDERGROUND UTILITY SCAN SURVEY (MAY 2023)

NOTE SITE NOT MEASURED BY TOPOGRAPHIC SURVEY SITE DIMENSIONS ARE INDICATIVE



| REV | DATE | DESCRIPTION | DRAWN/CHECKED |
|----------------|------|-------------|---------------|
| REVISION NOTES | | | |

DEFINE

CLIENT

PROJECT

**BULLIONFIELD SF CONNECT
A90
INVERGOWRIE, DUNDEE
DD2 5EG**

DRAWING TITLE

COMBINED SURVEY LAYOUT + GPR SURVEY

| | | | |
|------------|-------------------|-------|------------|
| DRAWN BY | DATE | SCALE | PAPER SIZE |
| LBM | 13.07.2023 | 1:200 | A1 |
| CHECKED BY | DRAWING NUMBER | REV. | |
| PB | 14192-BULLION-011 | | |

