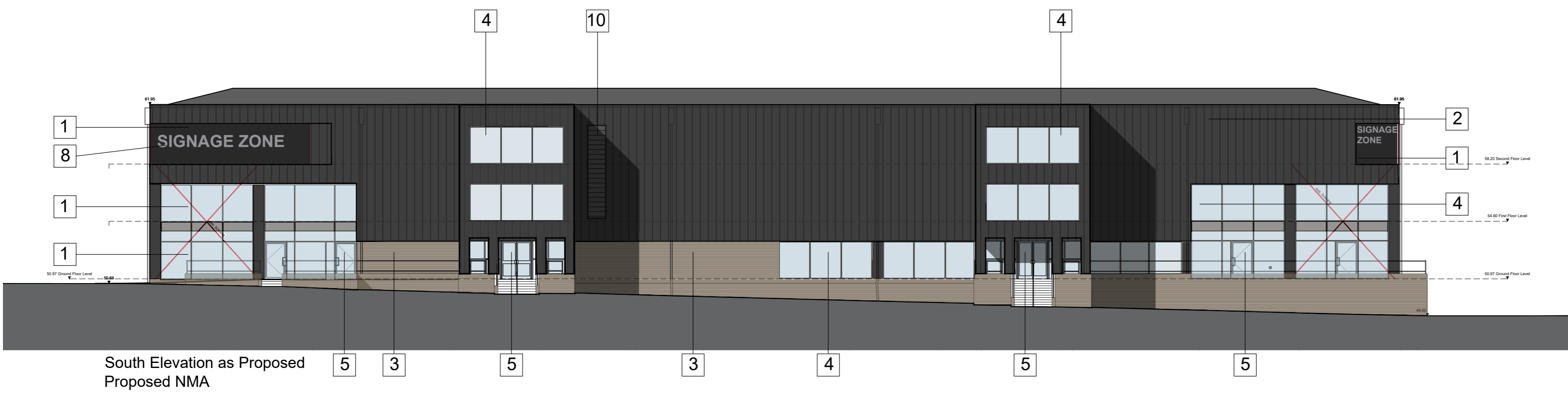
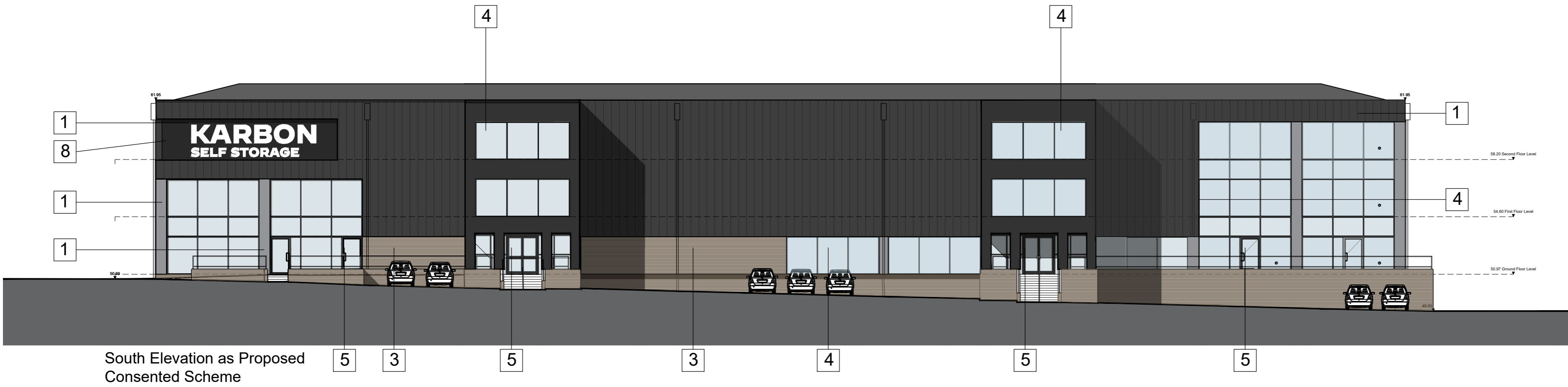


All levels and dimensions to be checked on site prior to construction / fabrication, report discrepancies immediately.

This drawing is copyright protected.

REVISION

A 11.12.23 Updated in line with PC comments GP AF



MATERIALS KEY:

1 - MiniMicrob_COMPOSITE WALL CLADDING PANEL:
Colour: Black - RAL 9005

2 - RW PROFILED METAL COMPOSITE WALL CLADDING PANEL:
Colour: Black - RAL 9005

3 - FACING BRICK
New brickwork to external areas to match existing blonde brickwork on the building.

4 - CURTAIN WALLING:
Proprietary double glazed curtain walling / entrance system & show windows to be approved.

5 - ENTRANCE DOOR:
Shop Front Door within aluminium CW system.

6 - STANDARD DOOR:
External steel doorset.
Colour to match wall it is within.

7 - FIRE EXIT DOORS:
Proprietary PPC steel security single leaf.
Colour: To match surrounding cladding panels.

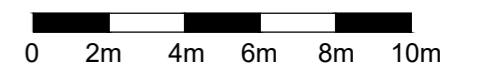
8 - SIGNAGE ZONES:
Signage to be determined as part of later advertising consent

9 - RAINWATER DOWN PIPES (RWP)

10 - SMOKE VENT:
To provide natural ventilation to Lobby, Colour: Black - RAL 9005

PLANNING

SCALE 1:200



SCALE	DATE	DRAWN	CHECKED
1:200@A2	Aug'23	GA	DEA

PROJECT
KARBON self storage
400 Edgeware Road
Cricklewood: NW2 6ND

DRAWING
External Elevations NMA
NMA Comparison



10 MONTROSE STREET
GLASGOW
G1 1RE
0141 229 7575
www.360architecture.com

DRAWING No.
23032GA_21_115A